

MICKLEHAM PARISH Magazine

A community magazine for Mickleham and Westhumble



A.N. Colwell 1984

November 2021

PROFESSIONAL CARPET & UPHOLSTERY CLEANING

- ✓ Local family running company
- ✓ Over 100's 5-star Reviews
- ✓ Award-Winning Customer Service
- ✓ Safe for Kids, Pets, and the Environment
- ✓ Effective against dirt & stains from drinks, food, makeup, pets & more

**SURREY
MAIDS**

- | | |
|----------------------------------------|--------------------------------------|
| REGULAR CLEANING | DEEP CLEANING |
| • Professional Equipment • | • Moving out/in services • |
| • Trained Staff • Task List Provided • | • Seasonal Cleaning • Tenancy • |
| • DBS Checked • Fully Insured • | • Oven Cleaning • Windows Cleaning • |
| • Flexible Hours • Easy Payments • | • Commercial Cleaning • Schools • |

PATTY PLUS 01306 866288
SERVICES LTD OFFICE@PATTY.PLUS
WWW.PATTY.PLUS

Bullimores



Accountants for Life
Tax • Accounts • Probate
Inheritance Tax &
Executorship

T: 01306 880880

E: partners@bullimores.co.uk

W: www.bullimores.co.uk

Bullimores LLP licensed to carry out the reserved legal activity of non-contentious probate in England & Wales by the ICAEW

MICKLEHAM PARISH Magazine

November
2021

Mickleham Parish Magazine

A community magazine for Mickleham and Westhumble published under the auspices of Mickleham PCC with an independent editorial panel.

The magazine is published at the beginning of each month except January and August.

COPY DEADLINE
DECEMBER MAGAZINE
Sunday
7th November

send to:

Sue Tatham
St Anthony, Pilgrim's Way
Westhumble
Dorking RH5 6AW
01306 882547
editor@micklehammag.co.uk

Contributions in any form are welcome as are good quality photographs. There is no charge for advertising local charity and community events. However the editors reserve the right to shorten omit or reformat articles submitted for publication depending on space.


Printed by Holbrooks Printers
Portsmouth

Mickleham Rectory

Hello friends

I am really pleased to be in post and in the Rectory. My move has been some time in the planning and preparation, but it is now complete, apart from some further unpacking, and our journey together has begun. I am really grateful for the tremendous welcome at the licensing service and afterwards at Box Hill School. I am wondering which activities to try out after being invited to several, including playing badminton and cricket, singing with the choral society, learning about growing vegetables and local history. Mickleham and Westhumble seem to be great communities with lots of activities and I look forward to getting to know you, the community groups and the beautiful locality in the coming days.

One of the great things about being a priest here is that church and community are so closely connected. The church can sometimes seem like a Sunday club, where people go regularly for some spiritual input, and then get on with the rest of their lives, just as they go once a week to play sport for fitness or to develop skills. Church does of course provide for spiritual needs but being a member of the Body of Christ, as Paul describes the church in his letters e.g. in Romans 12, is a way of life, to be enjoyed and to be experienced each and every day. No matter what we do as Christians we belong to Jesus, who loves us and empowers us to live his risen life. When we take part in any activity, whether that be working, gardening, cooking, learning, relaxing, talking or walking, we are his and so there can be no divide between sacred and secular. Neither should there be a divide between church and community, for God is interested in and concerned about everything that goes on in his world.

At the licensing service the welcome illustrated the connections between church and villages, and I hope and pray that that sense of all being together will persist and develop. I will do my best to be a priest for everyone in the parish, but it is not only about me!

My hope is that we can all work for the good of our community and will all increasingly recognise that Jesus is with us no matter what we do. St Michael's Church and the Chapel of Ease are very much part of Mickleham and Westhumble and church members take something of church, something of Jesus, wherever they go. What about the other way round, though? Can the community be brought into the church? Yes of course, but not only by church members. Going to church may seem to be just for a privileged few who have a faith but in fact all are welcome in our church and all are loved by God. No one is excluded from God's love. No one is excluded by God from his church, although we sometimes exclude ourselves. Those with doubts, guilty consciences, the fearful, the lonely, the hurt, the bereaved are all welcome. Those who do not feel spiritual, those who do much good, those who are content or happy, those who have not been for a long time, those who may feel they will not fit are all welcome.

Once more thank you so much for your welcome and I hope you in turn feel welcome to contact me and to come to any of our services.



The Rev Dr Sandra Faccini, Parish Priest

My usual working days as your House-for-Duty Priest will be Monday, Tuesday and Sunday with some flexibility as needed. My phone number is 01372 417664 and my email is parishpriest@micklehamchurch.org.uk

**WELCOME
BACK
WE MISSED
YOU**

Stepping Stones

MORE THAN JUST A PUB

RESTAURANT & ALFRESCO DINING

CAFÉ-LOUNGE BAR

GARDEN WITH MARQUEE AND OUTSIDE HEATING

POP UP GENERAL STORE

SERVING BASIC ESSENTIALS, FRESH FOOD, GROCERIES AND LOCAL PRODUCE

TAKE OUT / INTRODUCING LOCAL DELIVERY

OFFERING LOCAL GINS-ALES-WINES AND CHEESE

01306 889932

steppingstonespub@gmail.com

www.steppingstonesdorking.co.uk

OPEN FROM 11 AM

Please place your pre-orders before 3pm for deliveries and takeouts for the evening

Sherlock Funeral Service

*Sherlock Funeral Service is an
Independent family owned business,
established over 100 years*

- Private Service Chapel & Rest Rooms
- Home visits arranged if required
- Pre-Paid Funeral Plans available
- Free Parking

Telephone: 01306 882266

Trellis House, 190 South Street, Dorking RH4 2ES.

Email: office@sherlockandsons.co.uk



Funeral Directors & Monumental Masons



St Michael's Church Services

See calendar on centre pages for details of all services

10 am Sunday Services also available on Zoom

Joining information for both Zoom and telephone users is available in Pews News Online each week. If you would like to join us by Zoom then contact Alison Wood for the codes or to ask her to include you on the emailing list for Pews News: admin@micklehamchurch.org.uk / phone 01372 376443. We hope as many of you as possible will be able to join us for worship.

Please refer to Pews News Online for the latest information. If you missed any of the services, or would like to revisit them, all are available on the church YouTube channel:

<https://youtube.com/channel/UCL4pbewCT91iZhcd0EjJBlw>



Bible Study Groups

Monday Evening Chapel Group
8 - 9 pm

Contact Amanda Wadsworth
aewadsworth@hotmail.com

Thursday Morning Study Group
11 am - 12.30 pm

Contact Alison Wood
01372 376443
alison.wood29@btinternet.com

Parish Prayer Meeting

Tuesday 2nd November
7.30 pm in church
Everyone welcome



First Saturday of the month Coffee Morning at Westhumble Chapel Saturday 6th November

Come along between 10 am and noon for coffee and cake £1 – free drinks for children

Everyone welcome

For further information call Jonathan Blake 07787 126966

Men's and Women's Saturday Breakfasts

A social gathering open to everyone



MEN'S BREAKFASTS THIRD SATURDAYS

THE RUNNING HORSES

9 – 10 am
20TH NOVEMBER

Book with: Andy Diamond
diamo1@hotmail.co.uk

WOMEN'S BREAKFASTS THIRD SATURDAYS

THE STEPPING STONES

9 – 10 am
20TH NOVEMBER

Book with: Stephanie Randall
0773 6933 482
srandall55@gmail.com



Got your shoebox? Operation Christmas Child Shoebox Sunday – 7th November

Once again St Michael's Church will be joining with St Michael's Infant School and Box Hill School to contribute to the Samaritan's Purse Operation Christmas Child Appeal.

Leaflets will be available in church and there is also information about what to pack on the Samaritan's Purse website.

If you are unable to shop and pack a box yourself, there is the option to make a donation instead:

<https://www.samaritans-purse.org.uk/what-we-do/operation-christmas-child/>



Remembrance Sunday 14th November

The Service of Remembrance will start in St Michael's at 10 am culminating with the traditional commemoration at the War Memorial.

The Headmaster and Governors of Box Hill School have kindly invited those attending the Remembrance Service to coffee in the McComish Hall following the service.

Licensing of our new Parish Priest The Rev Dr Sandra Faccini

What a wonderful evening! Our beautiful church looked its best, providing the perfect, gracious ambience for the important occasion of the licensing of our new House-for-Duty priest, the Rev Dr Sandra Faccini. Bishop Jo of Dorking, dressed in her robes, with mitre and crozier, combined a sense of occasion with a relaxed approach that resonated with the congregation. She was joined by the Archdeacon of Dorking, the Venerable Martin Breadmore, and the new Area Dean, the Rev Renos Pittarides, along with the Rev Michael Dunk and the Rev Elizabeth Burke.

Bishop Jo's sermon, quoting Woody Allen that '80% of success in life is turning up', stressed how valuable the role of each member of the church is. She encouraged the parish to continue our efforts, recognising that our new priest is part-time and will need our ongoing support in furthering the church's growth. Referring to the reading from Romans 12:1-8, the bishop urged us all to offer ourselves in service, and through this see what God may do in transforming us. 'If we show up 80% of the time, God shows up too.'

The church was hushed as Sandra declared her resolve to follow Jesus

And finally ...

As a new chapter in St Michael's history opens, we must say a few farewells and thank-yous:

Farewell to:

- The Rev Graham Osborne, Rector of Leatherhead since 2009, who retired at the end of October. During his tenure St Mary and St Nicholas Church was completely refurbished. We send our best wishes to Graham and Nicky who have moved to Cornwall.

- The Rev Jack Mulder who took many of our Sunday services and provided clergy cover for those Sundays when he was not available.

- The Rev Michael Dunk who offered pastoral care and took most of our services during the vacancy. In the beginning he was a particular support to Sarah in her new role as churchwarden



From left: Churchwardens – Tim Mathieson and Sarah Blake, Area Dean – The Rev Renos Pittarides, Our new parish priest – The Rev Dr Sandra Faccini, The Bishop of Dorking – The Right Rev Dr Jo Bailey Wells, Archdeacon – The Ven Martin Breadmore

and care for the church and its people, took her oaths of allegiance, was anointed with oil and received her licensing document from the bishop. The congregation was also invited to re-dedicate ourselves to follow Jesus, share his love with others and to worship and pray together.

Near the end of the service, members of local community organisations came forward to welcome Sandra: the warmth and number of these greetings demonstrated not only the breadth

of activity in the parish, but also the importance to the community of our new priest.

To round off the evening, Box Hill School provided refreshments and the venue for us to meet Sandra, members of her family and other members of the diocese. Thanks to Box Hill School and to all who contributed to and participated in the licensing service.

We welcome you most warmly, Sandra!

Sarah Blake and Tim Mathieson

and he readily took on the skills needed to use Zoom. We got to know him well during the dark days of lockdown when we were totally dependent on Zoom for our services. Michael joined us during our 'coffee' and chat sessions afterwards and in *The Running Horses* when the church opened for services again. Michael also gamely abseiled down Portsmouth's Spinnaker Tower in aid of the Alzheimer Society after having bought the experience in St Michael's Charity Auction earlier in the year.

Huge thank-yous to:

- Churchwardens Sarah Blake, Tim Mathieson and Ian Wright, Parish Administrator Alison Wood and all the PCC members for their hard work and leadership during the vacancy. We must also acknowledge their diligent and successful work to ensure that we



Michael Dunk with the painting presented to him at his farewell party

were able to continue to have a House for Duty Priest.

- Kelvin Pritchard who used his many talents and technical skills to enable us to take full advantage of current digital applications to benefit the wider church community during this difficult time.

Superb professional
cleaning of carpets
oriental rugs
upholstery curtains
and leather
Guardsman
anti-stain protection

- spot stain and odour removal
- leather cleaning specialists
- flame retarding
- dust mite reduction service
- all work fully insured & guaranteed

For a free no obligation quotation call today
Freephone 0808 144 9071
John Joannides 28 Bracken Close Bookham

Safeclean
The furnishing care specialists from GUARDSMAN



*Pinehurst
Rest Home*

We aim to provide an excellent service at competitive rates supporting emotional physical and social needs of our clients always respecting and protecting their status as adults.

- Residential and 24-hour daycare
- Excellent cuisine
- Facilities for disabled: medic bath / lift
- Home doctor in attendance
- Single & sharing rooms
- Convalescent & short stays
- Lounge with TV & piano
- Separate dining room
- Physiotherapist chiropodist & hairdresser
- Entertainment: theatre visits / parties & cabarets held on premises

**National Trust Road Box Hill
Mickleham Dorking Surrey RH5 6BY**
Telephone: 01306 889942 / 888253

*Dorking
Decorators*
PROFESSIONAL
PAINTERS & DECORATORS

Established Local Family Business

- Over 20 years' experience
- Internal & External
- Commercial & Domestic
- Friendly, First Class Service
- Surrey / Sussex/ Greater London

**FREE ESTIMATES
01306 640418**
www.dorkingdecorators.co.uk
As approved by Checkatrade

CHRIS HULME
Garden Machinery

Service and repair of all makes and models of:

- Ride-on mowers
- Rotary mowers
- Cylinder mowers
- Chainsaws
- Strimmers
- Hedge cutters
- Rotavators
- Blower vacs

*Quality secondhand machinery
Collection and delivery service*

The Barn Cowslip Lane Mickleham 01372 377757 / 07950 961606

• Quality Flowers • Personal Service • Customer Satisfaction •

FLOWERS by ELAINE

- Wedding Specialists •
- Qualified Florists • Fresh Flowers & Plants • Local Delivery •
- Varied Gift Selection • Corporate Functions • Special Occasions •
- Funeral Tribute Specialists • Interflora Worldwide •

66 High Street, Dorking, Surrey RH4 1AY
T: 01306 883511 • E: fbe@btconnect.com
www.flowersbyelaine.co.uk



SIMON HOOPER
For all your decorating needs...

Professional friendly and speedy service at all times

Fully insured	Insurance work
Exterior painting	Interior decorating
Free quotes & advice	Oil & Water-based products
Commercial/Domestic work	Wallpaper hanging & removal
07947 135 376	0208 3978 962
www.slhdecoratingservices.com	

Harvest Festival

Photographs: Alison Wood



Many thanks to Alison Wood and her team who decorated St Michael's so beautifully for Harvest Festival

Harvest Supper

The Mickleham and Westhumble Harvest Supper took place on Saturday 2nd October. How good it was to be mingling in a crowd again even if the doors were open and our table was nicely placed to catch the draught. The chatter and laughter warmed things up in short order and the slight inconvenience was soon forgotten.

We were welcomed by our lively compère Francesca Cox, who also gave a special welcome to our new parish priest Sandra Faccini, who said a short grace. We were soon tucking in to delicious, crispy topped shepherd's pie, or was it cottage pie? Whichever, it was it went down well with mixed peas and sweet corn. As we ate, we studied the two picture rounds of the quiz. Our table found the famous sites from around the world not too difficult. The famous faces had us floundering a bit. Einstein and Lloyd George we had no trouble with but the modern film stars,

pop singers and personalities were much harder. Something to do with our advanced years perhaps!

Between the main course and pudding came the first two rounds of the quiz proper hosted by Mike Wickings.

Cries of triumph and dismay were heard from around the hall as we marked our own papers. Fortified by a wide choice of delicious puddings we were able to tackle the next two rounds. Happy guess work found us correctly 'knowing' that the greyhound in lane one always wears a red jacket; that India is the country with the most post offices and Amsterdam the capital city of a hundred islands divided by canals. Is it really exactly a hundred?

The first raffle prize looked terrific – a big basket bursting with promising-looking bottles. By the time our table's second number came up the prizes were down to items that caused much merriment.

Two more rounds completed the quiz. Ironical cheers greeted the low scores and hearty applause the upper echelons of the local intelligentsia. Then it was many thanks to the organiser Frances Presley and her willing cooks and helpers (well, we hope they were willing and not dragooned into the various tasks!) and time to help with chair stacking and table folding before departing for home.

It was our first time at the Harvest Supper, and I suspect it will not be our last. It was a very convivial evening and husband David, after many years of folding village hall tables, learnt a new technique that greatly excited him. Thank you, Charlotte. It is never too late to teach an old dog a new trick.

Barbara Jones

PS. Although not a dedicated fund-raising event, the supper raised nearly £1,000.



St Michael's Church Community Group

The big October event was the Harvest Supper, as kindly reported by Barbara Jones above. Some 80 people attended, and enjoyed a wonderful array of cottage pies and 'freestyle' desserts, volunteered by individuals in the community. Judging by my pavlova, Mary Berry lives nearby.

Massive thanks to Frances Presley who put in many hours on the organization and set-up, and to Mary Banfield for the same. A standing ovation for a very warm and enjoyable event! Additional helpers not mentioned below include Sue Tatham and Susie Moore for their gorgeous table flowers. They underlined their 'green' credentials by

their (rather appropriate) presentation in recycled, and recyclable, soup tins. Andy Diamond and John Banfield double-manned the bar, thank you. Thanks to all those who made food, set-up the room, organized and sold tickets for the raffle... and provided prizes, and to everyone else who assisted. A true Community Event. Mark Day



Please support the Food Banks - the need continues

LOCAL FOOD BANK COLLECTION POINTS

MICKLEHAM

Garden Corner off Old London Road
Mary Banfield 01372 373912

WESTHUMBLE

St Anthony, Pilgrim's Way
Sue Tatham 01306 882547



St Michael's Church Community Group

Sundays at Six

Many will remember that, pre-Covid, Tracy Kennington organised occasional recitals by local musicians in church on Sunday evenings: Sundays at Seven. These were free, but attendees were asked to make a donation to a designated charity. It has been decided to bring these forward an hour, for reasons of Sunday roasts and TV scheduling. And now they will, rather imaginatively be called 'Sundays at Six'. The first of these will be a 'four-hands-one piano' recital with Tracy and Caroline D'Cruz on 21st November at St Michael's. See below for details.

Advent Windows 2021

After last year's storming success, this year our advent window event will be less encumbered by Covid regulations and is expected to provide greater opportunity for outside socialising. It is hoped that the 'opening day' of more of the individual windows might be accompanied by mulled wine and nibbles. Last year, this allowed quite a few people to put faces to names they only knew from *WhatsApp*. It is a great opportunity to get to meet the wider community.

After each 'window' launch day, it will remain in place for viewing up to



Christmas itself, so if you take a stroll on Christmas eve you should be able to see all of them.

Please register your window and try and secure a convenient date, by email to Will Dennis wdwdennis@icloud.com or by other means of communication to another group member (contact details on page 15). Mark Day

The first in the second series of occasional recitals and concerts by local musicians

Sunday 21st November

St Michael's Church, Mickleham



Let the Music begin!

with

Tracy Kennington and Caroline D'Cruz

Piano – Four hands

A programme full of variety

No ticket needed – Retiring collection in aid of Sheldrick Wildlife Trust



We are back! After the trials of the last 18 months, it is lovely to be able to look forward to something exciting which we can share with our friends. Of course, we must be mindful of any government guidelines at the time, but we are planning to hold the Crib Service in the 'Bonfire Field' in Westhumble on Christmas Eve at 4 pm. This has always been a very popular family event, and this year let us make

Christmas is Coming Christmas Eve Crib Service

it even more special. We start at 4 pm at the junction of Adlers Lane and Chapel Lane, before processing to the field led by the star. There are readings and carols along the way, which help to tell the story.

Once again, we would like as many children as possible to take part, either as readers or the 'cast.' We need all the main characters as well as a bevy of angels, flocks of shepherds and an impressive train of Wise Men with their attendants. Adults are welcome to dress up as well, especially if you are a frustrated shepherd or a 'very wise man!' There will be hot drinks afterwards.

If you have not been before, it is a truly wonderful event which reminds

us, in the midst of the hurly-burly of present wrapping, potato peeling and last-minute panics, that what we are celebrating is the birth of a baby, Jesus, in a crude stable, to a young girl and her husband whose hearts must have ached with love and fear in equal measure.

Further details will appear in next month's magazine, but if you would like to take part, or help in any way, please get in touch with me as soon as you can.

This is not a ticketed event, and all are welcome, there is plenty of space in the field, but please wear suitable warm clothing – thermals under the angel costume is a good idea.

Anne Weaver
01306 883932

Christmas Activities – Dates for your Diary

SPECIAL SERVICES IN ST MICHAEL'S CHURCH



Christingle Service

Sunday 5th December - 10 am

Carols by Candlelight

Sunday 19th December – 6.30 pm

Christmas Day Family Service

Saturday 25th December – 10 am



The Christmas Café

returns to

Westhumble Chapel

Saturday 11th December 2 to 4 pm

- Craft stalls • Mulled wine • Teas and plenty of community chat

If you would like a stall, please contact:
Jenny Hudlass jennyhudlass01@gmail.com
No charge, donation only



Thursday 23rd December 7 pm

Ex-Crew Members Get-Together

Campfire with marshmallows (weather permitting)
Further details next month. Jonathan Blake 07787126966



Friday 10th December

8 pm Mickleham Village Hall

Tickets £12 including refreshments £6 children under 12
Anne Weaver 01306 883932 secretary@micklehamchoral.org.uk

Christmas Carolling



in the

Chapel ruins

Chapel Lane, Westhumble

**Tuesday
21st December
6 pm**

followed by
refreshments at
Chapel Farm

Round the Pubs

**Friday
17th December**

Further details in
December magazine
Jonathan Blake 07787 126966



- Bespoke dress making
- Soft furnishings
- Clothing alterations
- Curtains
- Sewing lessons
- Roman Blinds

Contact Tracey: 07511 079441
traceyssewingroom@gmail.com



Treeline Services Ltd.
**YOUR LOCAL PROFESSIONAL
TREE HEALTH CARE SPECIALISTS**

Felling, Pruning, Stump Removal, Planting, Logs,
Woodchip, Air Spade Services, Consultancy

Call us on **01306 741800**
office@treeline.co.uk • www.treeline.co.uk



Your visiting
PHYSIOTHERAPIST
SUE JUDD MCSP HCPC
40 years of experience.
All your requirements for elderly
mobilisation & post-operative
rehabilitation.
07834 227999 sue-judd@sky.com



EDE BROS
REMOVALS • STORAGE • SHIPPING

• Since 1926, Capel-based and family owned
• STRESS-FREE, local, national & worldwide
• Contact us for your **FREE** estimate...

01306 711293
edebros.co.uk



Gill and Paula would like to warmly welcome you to Aspen Care offering assistance to enable you to live in the comfort of your own home with care and companionship.

- A happy alternative to a care home
- Cover while your family or carer takes a holiday
- Recuperation and rehabilitation following a hospital stay
- All aspects of personal care medication and meal prep
- Dementia care disability chronic & critical conditions end of life care
- Accompaniment to appointments

Call for a chat to discuss your requirements.
We look forward to hearing from you.
01737 354821 info@aspenliveincare.co.uk www.aspenliveincare.co.uk

P J Oliver & Son

Window cleaning
House & Garden Maintenance
Roof Repairs, Guttering
Painting & Decorating
Ground works, fencing, hedge cutting,
and tree work
Also Pest control
Call Phil on 07722 158111
Email Oliiviagarrett79@gmail.com



**YOUR LOCAL FARM SHOP
ON DENBIES WINE ESTATE**
farm shop deli plant centre
Open daily including Bank Holidays 9.30 am to 5.30 pm and Sundays 10 am to 5 pm Free parking
CHRISTMAS FOOD FAIR : 12-4pm SUNDAY 21st NOVEMBER
Local Producers – Free entry
We deliver veg bags and more to the local area on Tuesdays and Fridays see
www.vgfarmshop.com or email vegbag@vgfarmshop.com for details
LOCAL • NATURAL • ETHICAL 01306 880720 www.vgfarmshop.com



Garden Shed's Al Fresco Clematis Talk

For the first Garden Shed presentation of 2021 at the Stepping Stones Pub, Tina had very kindly arranged for us to use the gazebo in the garden; our first *al fresco* event. There we welcomed Everett Leeds, member of the International Clematis Society and former Chairman of the British Clematis Society, who shared the benefit of his experience of growing clematis.

With more than 300 species in this genus from locations, including Europe, North and Central America, Japan, China and New Zealand, this group is

incredibly diverse but can broadly be divided into three groups depending on the season in which they bloom:

Group 1: Early bloomers – *C. montana* flowers in late spring to early summer. Providing vigorous growth they will cover large walls or climb up trees.

Group 2: Repeat bloomers – *C. nelly moser* have two flushes of flowers, first in early summer on last year's growth, then in late summer on new growth.

Group 3: Late bloomers – *C. viticella* flowers in late summer.

Being one of the most popular garden

plants, this talk was well attended by about thirty locals who listened with interest and shared their experiences of growing, or trying to grow clematis. Everett was able to offer helpful advice and tips to achieve successful blooms. In summary, he stressed the importance of clematis being pruned according to the season in which they flower and the age of wood that bears blooms. Most importantly he encouraged us to all to share his passion for growing this very special and beautiful flowering group of plants.

Cathy Lee

Garden Shed at the Leigh Apple Press Day

On 25th September we attended the Leigh Food Festival and Apple Press Day. when families from the surrounding areas bought their apples to be pressed. Volunteers produced many bottles of apple juice from an abundant supply of apples.



Coming Events

Shrubs and Climbers for your Garden

a talk by Graham Pattison

Monday 15th November at 7.30 pm

The Stepping Stones Pub, Westhumble.

Tickets £6 on the door - no need to book

Christmas Wreath and Bottle Garden Workshop

Saturday 11th December

9.15 am - 12.30 pm Mickleham Village Hall Booking essential

Any questions and to book

See our website for details
www.gardenshed.club

Pauline Davis 07759 646353 paulinemdavis@gmail.com
Susie Gowenlock 07768 923088 susiegowenlock@gmail.com

Lest We Forget: Walter Douglas Cullen

A few weeks ago, an aviation enthusiast contacted the Local History Group after a visit to St Michael's churchyard. He had spotted the Royal Flying Corps (RFC) insignia on the grave of Walter Douglas Cullen who died in 1920 and wondered if we had any information about Walter's military service. Although we had recorded all the inscriptions on the Cullen family grave, we knew very little about Walter. With Remembrance Day approaching it seemed an appropriate time to find out more.

Walter was born in Stonebridge Park, Willesden in November 1892, one of the five children of William Henry Cullen and his second wife Alice (William already had six children with his first wife who died in 1889). William was the founder of the well-known grocery company, W H Cullen, which had stores throughout the south-east of England. By 1910 the Cullens had moved to Mickleham Downs House and soon established themselves in the community, the Cullen name appearing regularly in local newspaper reports of church and village events.

On July 11th 1914 'Mickleham was all excitement', according to the *Dorking and Leatherhead Advertiser*, on the occasion of the marriage of Dorothy Cullen, Walter's half-sister, at

was no indication in the newspaper that the wedding was in any way unusual. The couple must have moved to Germany soon after their marriage because their son Christian was born in Heidelberg in December 1915. Another son, Robert, was born in Mülheim in 1917 and was serving in the Germany army at the time of his death in January 1939. Whether Hermann was exempt from military service in WW1 is not known. We do know that Hermann and Dorothy came back to live in England because Hermann's death was recorded in the Chichester registration district in 1950 although he was buried in Heidelberg. Dorothy's probate record tells us she died in Bognor Regis in 1986 leaving an estate worth £157,839.

By October 1914, just three months after Dorothy's wedding, Walter was already serving in the 5th Battalion of the East Surrey Regiment (one of the Regiment's Territorial battalions) and was promoted to 2nd Lt. In July 1916, by then a lieutenant, he was seconded to the RFC and the following April obtained his Royal Aero Club Aviator's Certificate at the Military School in Ruislip. Walter had married Gwen Thompson in February 1917 and their first child, Charles, was born ten months later. Walter would not meet his son until after the war ended because he



of his brother-in-law, Hermann Hettner, had lived. Walter was repatriated on December 14th 1918 but would have only a brief time to enjoy post-war life with his family at their new home in Leatherhead. He died suddenly on September 16th 1920 after an operation, less than a month after his second child Peter was born. Whether his death was in any way connected to his war service is unknown at this time.

Walter's younger brothers, Hugh and Roy, had also joined the army and fortunately both survived the war. Hugh attained the rank of captain in the South Staffordshire Regiment and was awarded the Military Cross while Roy served as a lieutenant in the Dragoon Guards. Sisters Louie and Margery worked as VAD nurses, Louie in London and Margery in Aldershot and Leatherhead. Sadly, Louie's husband, Captain Kenneth Gill, died in a flying accident in France in October 1918 only six months after their marriage.

Margery remained at Mickleham Downs until the late 1930s after the deaths of her parents. She was honorary secretary of the Leith Hill Musical Festival from 1939 to 1964 and conductor of Mickleham Choral Society for many years. During WW2 the house was occupied by employees from the Charing Cross Branch of the Sun Insurance Office Ltd and demolished soon after they returned to London.

Walter's widow Gwen married a schoolteacher in 1923 and gave birth to a daughter two years later. After living in Leatherhead for several years the family moved to Somerset where Gwen died in 1983. Judith Long



Mickleham Downs House 1939

St Michael's Church. A list containing more than 120 'costly and handsome presents' was also included in the article. However, it was a surprise to discover that Dorothy's new husband was Hermann Felix Wilhelm Hettner, an engineer from Trier in south-west Germany. Less than a month before Britain declared war on Germany there

was taken prisoner in August 1917 and spent the remainder of the war in German POW camps. He was sent to a camp in Karlsruhe from where his family received the message 'I am quite alright send parcels Karlsruhe. Love to all'. In November Gwen was informed that he had been moved to Trier, by a strange coincidence the town where the family

Mickleham & Westhumble Local History Group Newdigate Walk

Photographs: Judith Long

We met our guides, John Callcut and Jane Lilley, at the Six Bells Barn which dates back to the 16th century and is now the home of John and his wife. They bought the barn 25 years ago when it was in a state of almost complete collapse, partly because it had been moved several times in the 20th century alone. Over coffee, we looked at two large display boards, one with more information about the barn and the other showing a timeline of the history of Newdigate.

Setting out on our walk, we crossed Village Street to arrive at St Peter's Church with its distinctive timber tower containing approximately 10,000 oak shingles. The current tower was built in 1525 although the nave and chancel are much older, built c.1200. Like St Michael's in Mickleham, St Peter's has undergone several alterations and renovations. Inside the church we admired the numerous wood carvings. Many of these, including the roundels on the pews and the angels on the choir stalls, were created by young men of the village who attended a wood carving class set up by Mrs Janson of Newdigate Place. Newdigate is fortunate to have its original Parish Chest, made from a hollowed-out log in the 1530s and kept in the chancel. The parish registers and valuables were stored in the Parish Chest which was required to have two (and later three) different locks. One key was for the priest and the others for the churchwardens so that at least two people had to be present in order to open it.

Along Church Lane we passed Dean House Farm, dating from the early 17th century and originally a smoke bay house (where a short bay was sealed off from the upper part of the house to let smoke escape). The house has end jetties which allow the upper floors to extend beyond the lower ones. More commonly seen in towns, this was a way to show the status of the owner in rural locations. John told us there were rumours of underground passages connecting the farm and the Six Bells which were used by smugglers years ago. Further down the road is the old cart pond where farmers would drive



St Peter's Church

their carts to soak the wheels. Since the wheels were made from numerous pieces of wood if they were allowed to dry out the wood shrank and the wheels fell apart. The old brickworks were at the end of the road and the site is now a nature reserve.

Back on Village Street we turned north, passing the Infant School which shares an Executive Head with St Michael's Infant School in Mickleham. The original school was built in 1600 by George Steere, then Rector of Newdigate. Across the road is the unusually named Wirmwood, now a private house. The right-hand side had at one time been a butcher's shop and in Victorian times the left-hand side became a general store. We were very envious to learn that Newdigate still has a thriving village store called Bob's Shop with a post office on the premises. Near Wirmwood stood the old Bakehouse which had fallen into disrepair by the 1980s. In 1989 it was dismantled brick by brick and put into storage at the Weald and Downland Museum where it remained for almost 30 years before being reassembled and opened to the public in 2018.

For the last part of the tour, we walked up Kingsland where the village hall stands. It was built in 1901 and given to the village by Mrs Farnell Watson in

memory of her husband who had died recently. This was remarkably similar to the way Mickleham acquired its village hall a year later; Sarah Evans of Dalewood donated it in memory of her late husband David who had died in 1901. Although the Farnell Watsons' wealth had come from the Isleworth Brewery there was a covenant preventing the sale or consumption of alcohol in the new hall. To solve this problem a social club was built next to the hall in the 1930s with a licence to serve alcohol. The recreation field behind the hall is known as the Brocus. It was bought by a group of parishioners in 1945 when Mrs Farnell Watson decided to sell her Newdigate properties. Still owned by the village residents, the field is regarded as an additional war memorial and is now home to a variety of sports clubs and a children's playground.

Our walk ended at the Six Bells pub where we were able to purchase some of the Newdigate History Society's publications. Many thanks go to John and Jane for a really enjoyable morning.

Judith Long

PS: If you would like to join the Mickleham and Westhumble Local History Group, please contact Membership Secretary, Sue Tatham or see our website for an application form.

A Confidential & Safe Space to Talk

Counselling • Mind & Body Healing
Reiki • Relax into Nature Sessions
Online/Outdoors/Distance

Supporting you with compassion and
understanding through challenging times



Call Judith Cobby
on 01306 882229
or 07790 614448

www.healing-inspiration.co.uk



A local, award-winning business
supporting people living in Epsom
& Mole Valley, enabling them to
remain living independently AT
HOME as well as providing
companionship and colour to peoples lives.

RATED AS OUTSTANDING BY CARE QUALITY
COMMISSION

Committed to providing a quality, trusted and consistent
home care service, we only recruit local CareGivers
and match every CareGiver to every client so
the same person will call each time.

01372 741544 paul.tame@homeinstead.co.uk
www.homeinstead.co.uk/epsom

Ballroom Dancing Latin American Dancing Professional Training [IDTA]

Private lessons only on
Tuesday afternoons and
Sunday evenings

[with a one-hour practice session starting at 8pm]

At Mickleham Village Hall
Dell Close Mickleham Surrey RH5 6EE
07748 867 732

vmvdancing@gmail.com



IDTA Qualified Teacher

TIM LANGLEY

Experienced craftsman

ANTIQUE RESTORATION
CABINET MAKING
FRENCH POLISHING

Free estimates collection & delivery

01372 457700 07960 486455

Rowlatt Garden Services

RGS

EST. 1985

**Gardens large and small
we maintain them all**

All aspects of private and commercial garden
and estate maintenance landscaping undertaken
Fencing grass & hedge cutting

Telephone: 01737 841524 Mobile: 07887 838666

References available upon request

SHOP LOCAL WITH SEACHANGE



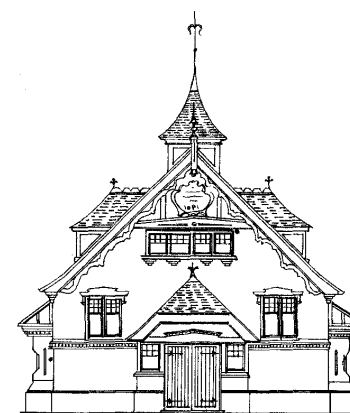
We are passionate about two things: protecting our
oceans from plastic pollution and great tasting wine.

- Award-winning wines from around the world
- Vegan and vegetarian options
- Supporting ocean conservation projects
- Minimal, eco-friendly packaging
- Plastic free

THE SURREY-BASED ECO-CONSCIOUS WINE RANGE

CONTACT US ABOUT FREE LOCAL DELIVERY

+44 (0) 1372 454910 - HELLO@SEACHANGEWINE.COM - WWW.SEACHANGEWINE.COM



Mickleham Village Hall available for hire

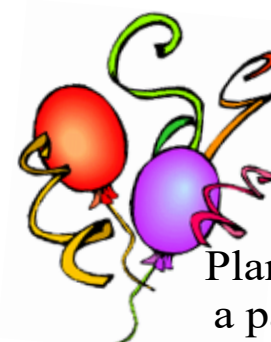
Hall bookings
Table & chair hire

Deanna Darnell

07790 941 601

bookings@micklehamvh.co.uk

www.micklehamvillagehall.org.uk



Planning
a party?

Equipment
available for hire

China ~ Cutlery

Electric urn

Equipment hire

Mary Banfield

01372 373912

admin@micklehamvh.co.uk

Community Directory

BOX HILL AND HEADLEY HEATH (National Trust)

Lead Ranger – Mark Dawson

01306 885502

mark.dawson@nationaltrust.org.uk

Friends of Box Hill – Chair Lyn Richards

01737 842889

lyn@mra.uk.net

BOX HILL SCHOOL

Headmaster – Cory Lowde

01372 374814

HMPA@boxhillschool.com

DORKING CRICKET CLUB

Chairman – Andrew Homewood

homewooda@hotmail.co.uk

DORKING GROUP OF ARTISTS

Exhibition Secretary – Patricia Booth

01737 24491

patriciabooth100@gmail.com

DORKING LAWN TENNIS & SQUASH CLUB

Jim Cattermole

01306 883629

jim.cattermole@uwclub.net

DORKING RUGBY CLUB

Jim Evans

07789 176417

jim@flintcottage.net

THE GARDEN SHED

Pauline Davis

07759 646353

paulinemdavis@gmail.com

Susie Gowenlock

07768 923088

susiegowenlock@gmail.com

JUNIPER HALL FIELD CENTRE

01306 734501

enquiries.jh@field-studies-council.org

Head of Centre – Maddy Jones

m.jones@field-studies-council.org

Friends of Juniper Hall – Suzy Hughes

01483 281935

suzy@suzyhughes.co.uk

MICKLEHAM CHILDREN'S PLAYGROUND ASSOCIATION

Secretary – Sarah Parfitt

07767 891772

sarah@sarahparfitt.com

MICKLEHAM CHORAL SOCIETY

THURSDAYS 8 - 10 pm – MICKLEHAM VILLAGE HALL

01372 373106

Conductor – Juliet Hornby

01306 883932

Secretary – Anne Weaver

www.micklehamchoral.org.uk

secretary@micklehamchoral.org.uk

MICKLEHAM OLD BOX HILLIANS FOOTBALL CLUB

Secretary – John Atewell

01372 374745

MICKLEHAM PARISH COUNCIL

SEE WEBSITE FOR MEETING DATES www.micklehampc.org.uk

Chairman – Rev David Ireland

01372 379381

rev.ireland43@btinternet.com

Parish Clerk – Feena Graham

clerkatmpc@gmail.com

MICKLEHAM PARISH MAGAZINE

Editor – Sue Tatham

01306 882547

editor@micklehammag.co.uk

Co-Editor – Charlotte Daruwalla

01306 884025

editor@micklehammag.co.uk

Administrator – Vacant

MICKLEHAM VILLAGE HALL

Chairman – Ben Tatham

01306 882547

chairman@micklehamvh.co.uk

Bookings Manager – Deanna Darnell

07790 941601

bookings@micklehamvh.co.uk



Personal Training and Pilates with Immie Adshead

L4 Qualified Coach

Optimize your Body Brain Connection
Maximise your Results

1-1, 1-2, small groups in the Surrey Hills

07935 674 588

immieadsheadpt@gmail.com

www.thebodybraincoach.com



ST MICHAEL'S CHURCH

*within the United Benefice
of Leatherhead and Mickleham*

INCUMBENT— VACANT

PARISH PRIEST

The Rev Dr Sandra Faccini 01372 417664
parishpriest@micklehamchurch.org.uk

CHURCHWARDENS

Sarah Blake 07736 235709
SarahJB1@outlook.com

Timothy Mathieson 07555 597163
TimothyMathieson@aol.com

PARISH ADMINISTRATOR

Alison Wood 01372 376443
admin@micklehamchurch.org.uk

PCC SECRETARY

Elizabeth Moughton 01306 883040
pccsecretary@micklehamchurch.org.uk

TREASURER

Richard Siberry 01372 375303
pcctreasurer@micklehamchurch.org.uk

ORGANIST

David Fishwick 0208 773 2420
organist@micklehamchurch.org.uk

WEDDINGS CO-ORDINATOR

Elaine Machin 01372 724972
weddings@micklehamchurch.org.uk

BAPTISMS CO-ORDINATOR

Vickie Leney 01306 884054
baptisms@micklehamchurch.org.uk

FUNERALS ORGANISER

Brian Wilcox 01372 374730
dbrianwilcox@btinternet.com

WEBSITE MANAGER

Sarah Ward 01372 383350
website@micklehamchurch.org.uk

www.micklehamchurch.org.uk

*For information about services for other
denominations see website pages.*

Search on 'Churches Together Mole Valley'

REGISTERS

BLESSING OF MARRIAGE

25th September Michaela Fuller and
James Ingram

BURIAL OF ASHES AND THANKSGIVING SERVICE

2nd October Sayda Cole

THANKSGIVING SERVICE

6th October Geoffrey Knight

FUNERAL AND BURIAL IN THE CHURCHYARD

8th October Julia Cook

INTERMENT OF ASHES

8th October Rosemary Finlay

November

2 Tuesday 7.30 pm Parish Prayer Meeting in church
6 Saturday 10 am Coffee Morning at Westhumble Chapel

7 **SHOEBOX SUNDAY** 10 am Family Service

Copy deadline for December Magazine



14 **REMEMBRANCE SUNDAY**

10 am

Service of Remembrance

followed by coffee at Box Hill School

6 pm

Choral Society's Concert for Remembrance

Sunday in Leatherhead Church

Please note there will be no Morning Prayer at
Westhumble Chapel

15 Monday 7.30 pm

Garden Shed talk on Shrubs and Climbers
at the Stepping Stones

20 Saturday 9 am

Men's Breakfast. The Running Horses

9 am

Women's Breakfast. The Stepping Stones

21 **SUNDAY** 10 am

6 pm

Holy Communion

Sundays at Six – Piano recital in church

28 **ADVENT SUNDAY** 10 am

Holy Communion



Coming Events – December

Saturday 4th Community Nursery's Christmas Fair 11 am-2 pm

Sunday 5th Christingle Service 10 am

Friday 10th Choral Society's Christmas Carol Party 8 pm

Saturday 11th Garden Shed's Christmas Wreath and Bottle Garden Workshop

Christmas Café in Westhumble Chapel 2 – 4 pm

Friday 17th Carolling Round the Pubs

Sunday 19th Carols by Candlelight 6.30 pm in church

Tuesday 21st Carol Singing in the Chapel Ruins, Westhumble

Thursday 23rd Ex-Crew Get Together 7 pm

Friday 24th Christmas Eve Crib Service 4 pm Bonfire Field, Westhumble

Saturday 25th Christmas Day Family Service in church

MEMBERS OF THE PAROCHIAL CHURCH COUNCIL

Sarah Blake Mark Day Andrew Diamond
Caroline Jones Vicky Leney Elaine Machin
Timothy Mathieson Elizabeth Moughton
Frances Presley Richard Siberry
Amanda Wadsworth Amy Ward

ST MICHAEL'S COMMUNITY GROUP COMMITTEE

Mark Day 07852 117249
mickleham@hotmail.com
Amy Ward 07709 199292
amycatrionaward@gmail.com
Mary Banfield 01372 373912
mgbbmw@aol.com
Andy Diamond 07789 775354
diamo1@hotmail.co.uk
Will Dennis 07903 842674
wdwdennis@icloud.com
Frances Presley 01306 882473
jasempres@gmail.com
Tim Mathieson 07555 597163
TimothyMathieson@aol.com

ST MICHAEL'S COMMUNITY GROUP HELPING HANDS

INCLUDING FOOD FOR FRIENDS

*A service for all residents
of Mickleham and Westhumble*

Examples of services we offer*:

- Essential shopping / collection of prescriptions
- Changing library books
- Small tasks: eg changing fuses, altering clocks etc
- Dog walking
- Visiting / befriending
- Home-cooked meals for local families going through difficult times

Requests to

Frances Presley 01306 882473

*More helpers needed – please contact
Frances if you can spare some time.*

Community Directory

Continued from page 13

MICKLEHAM & WESTHUMBLE BADMINTON CLUB
Membership Secretary Sarah Blake tinkerbell0044@hotmail.com

MICKLEHAM & WESTHUMBLE CRICKET CLUB
Membership contact Will Dennis 07903 842674
will@micklehamhallfarm.co.uk

MICKLEHAM & WESTHUMBLE HORTICULTURAL SOCIETY
Chairman – David Kennington 01372 362309
www.surreycommunity.info/mwhs davidkennington144@gmail.com

MICKLEHAM AND WESTHUMBLE LOCAL HISTORY GROUP
Chairman – Ben Tatham 01306 882547
ben@thetatham.co.uk
www.micklehamwesthumblehistory.co.uk/community/mickleham-
westhumble-local-history-group-13483/home/
MOLE VALLEY DISTRICT COUNCIL 01306 885001
Councillor Elsie Rosam 01306 885695
elsierosam29@gmail.com

THE ARTS SOCIETIES (FORMERLY NADFAS)
Betchworth – Mary Venning 01306 883301
Dorking – Sue Tatham 01306 882547
Leatherhead – Sarah Sheridan 01306 883699
ST MICHAEL'S CHURCH OF ENGLAND (A) INFANT SCHOOL 01372 373717
info@stmichaels-dorking.surrey.sch.uk
Friends of St Michael's School friendsofstmichaels2017@gmail.com
Co-chairs Nicole Harcombe, Tracey Harwood, Amy Rieley

ST MICHAEL'S COMMUNITY NURSERY
WEEKDAY MORNINGS – MICKLEHAM VILLAGE HALL
Supervisor – Hilary Budd 01372 361021
stmichaelsnursery@btinternet.com

SURREY COUNTY COUNCIL 03456 009 009
Councillor – Hazel Watson 01306 880120
hva.watson@btinternet.com

SURREY WILDLIFE TRUST 01483 795440
info@surreywt.org.uk

WESTHUMBLE RESIDENTS ASSOCIATION
David Allbeury 07860 227451
westhumble.neighbourhood.watch@gmail.com

WESTHUMBLE NEIGHBOURHOOD WATCH
Lead Co-ordinator – David Allbeury 07860 227451
westhumble.neighbourhood.watch@gmail.com

ADDITIONAL CONTACT INFORMATION

CITIZENS ADVICE
Dorking – Lyons Court 01306 732302
Leatherhead – Swan Mews High Street 01306 732301
CRIMESTOPPERS 0800 555 111
POLICE Non-emergencies 101
(often quicker to make online report) https://report.police.uk/
Neighbourhood Specialist Team – Dorking Rural East
General enquiries molevalley@surrey.pnn.police.uk
NHS Urgent and emergency care 111

Babysitting by local youngsters

Those listed below are at least
14 years old.

Alasdair Wise 01306 884694
Annabelle Prosser* 07443 634179
Maisy Presley* 07720 657327
Freya Pearce 07787 427143
Martha Pearce 07514 080005
Skye Moran 01306 640043
Patrick Moran 01306 640043
Amber Miller 01306 883659
Rory Lee **07973 360 950
Ellie Kim 07773 395 575
Tatiana Fleming-Smith
** 07495 014 427
Chelsea Edwards 07834 695816
Philomena Ala 07789 727682
Delphine Ala 01306 885767

* Holidays only
** Parent's mobile number

If you would like to add your
name to this list please get in
touch with Sue Tatham

01306 882547
editor@micklehammag.co.uk
No Charge

Advertising in the Parish Magazine

Please contact
Sue Tatham (as above)
Small ads: a nominal fee is
charged for ads where items or
services are bought or sold.

We have been advised to print
the following reminder:
We cannot guarantee the
quality of the goods and
services offered by our
advertisers.



Geoffrey Charles Knight 1932 – 2021

On 6th October family and friends gathered at St Michael's to celebrate the life of Geoff Knight. The service was led by the Rev David Ireland who knew Geoff well and had prepared him for confirmation when David was parish priest in Mickleham. The service included readings by his grandchildren, Lara and Ben Wadsworth and a video featuring James's son, Reggie and Andrew's children Emilia and Leo from their home in Italy.

Geoffrey Charles Knight was born in Croydon in January 1932, the second child of Charles and Florence Knight. As he arrived in mid-winter and had a cap of white hair his sister, Pamela thoughtfully named him Snowdrop. Maybe it was because of this, that when he grew up into a boisterous lad, he was always playing tricks on his older sister. But he loved her none the less. Geoff often recalled fond memories of being a young boy with lots of freedom exploring empty houses and finding war trophies during his childhood.

After A-levels he went on to do his National Service in the RAF where he learned to drive trucks. He was always very keen to point out that was why he was such a superb driver. He decided to forego university and started working in the Bookings Department of the Union Castle Line in Salisbury, Rhodesia (now Harare, Zimbabwe). Geoff was a great problem solver and was proud to have designed a new style ticketing system for them. Geoff had a good circle of friends in Rhodesia where he met and married Barbara. They returned to the UK shortly after their marriage and Geoff got a job as the managing director of Twinlock Computers, in the very early days when computers took up whole rooms and were less powerful than today's mobile phones.

Geoff was a keen golfer and loved to sail and race in 505 dinghies. He even built a dinghy in the sitting room of his first, very small house, which must have tested Barbara's patience. Amanda was born in 1962, followed by Andrew three years later and by James in 1966. In the late 1960s Geoff, with the help of Barbara set up KCS, a computer software company in Croydon, which

was very successful and produced the first accounting packages for large companies including the likes of Ford. Sadly, Barbara died of breast cancer when James was two which was a very upsetting period for the whole family.

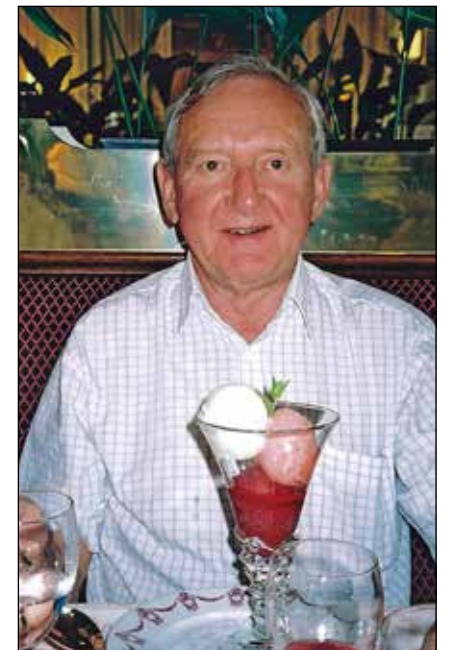
After an unsettled time, Geoff married Lorraine and the family increased from three to six children. Later he married Julie and adopted her son Robert. Geoff always cared about his children in his marriages (Joe, Becky, Rupert, Robert, Stephen and Karl) and remained very keen to find out what everyone was doing and liked to know that they and their families were well.

Geoff sold his business to Price Waterhouse in the 1980s. At one time he set up a boat-building company making steel boats to a Dutch design. These boats were exhibited at the Brighton and Southampton boat shows. Over the years he helped many friends and family members to set up various businesses. All those who worked with Geoff found him to be a man well ahead of his time, intelligent, hardworking, and fair.

Geoff met Gene in 1994, they moved to Mickleham in 1999 and were married in 2002. He was devoted to Gene, and they had a wonderful retirement together travelling the world.

Geoff was a very creative person and became very proficient in watercolour painting, sculpture, silversmithing (he had his own registered assay office hallmark) and wood turning. Many members of the family and friends have items made by Geoff. He was very good at making and mending things and solving problems. His workshop was well stocked with tools and gadgets, all kept in meticulous order. He was well read, enjoyed history, poetry and classical music and to top it all he obtained his solo gliders pilot licence while on his many business trips to Australia.

Geoff was a caring and generous person always on hand to help and offer advice. He was an active member of his community here in Mickleham and very generously allowed some of his land to be used by St Michael's Infant School. This 'forest school' has been



much used and is a very valuable asset. He was an incredibly busy person, not wasting a minute of his life. He will be sadly missed.

In increasingly failing health over the last few years, Geoff was lovingly cared for by Gene and, with the help of wonderful carers was able to remain at home until his last few weeks. He died on 10th September. The family are very grateful to everyone who looked after him so sensitively and respectfully during this time.

We send our love and deepest sympathy to Gene, Amanda and all the family.

• • • • •

Geoff's family would like to thank everyone in the community for their kind, supportive words and cards which have really helped to comfort them at a difficult time.



Community News

Welcome to Tim and Nina Challenor, who have moved to Fredley Park.

Deepest sympathy to Sue Judd of Camilla Drive on the death of her sister, Julia Cook née Dawson Smith of Wandsworth. Following her funeral at St Michael's on 8th October Julia was buried in the churchyard. Both their parents' ashes are buried in St Michael's Garden of Remembrance.

Gene Knights's reflections on life with Geoff

My first meeting with Geoff was due to a to a wrong diary entry. I arrived at a friend's house for a scrabble evening, and she had double booked! She was busy trying to matchmake Geoff and another friend. At first I thought she was going to close the door on me, but I ended up drinking tea with the both of them. Geoff was showing a fruit knife he had bought that day. Apparently, he collected fruit knives. I later discovered he collected many things.

Needless to say the match-making did not work and Geoff managed to get my phone number and invited me for dinner. We shared our love for music and theatre and discussed our pleasure in travel. This was the start of our life together. We began to get to know and love our respective families and enjoyed sharing time with them.

One of our great passions was travelling, although Geoff's experiences were completely different to mine. He preferred boat cabins to my treks and village huts. We compromised and I joined him on boat trips.

First there was Boucanier, a beautiful red ketch and then there was Seandor. Our first sight of her was horrendous

(me) a nice project (Geoff). The wooden boat had weeds growing through the bottom and the wood had turned grey. Geoff decided to rescue her and spent the next 18 months on this work while I was still working. The result of his work along with Andrew and other helpers was amazing.

We now had a boat to sail in and sail in her we did. First in the UK and then later on, the French rivers and canals. We had at that time acquired a dog. Chosen and named Lizzie by Lara, Geoff's first granddaughter when she was about six years old. Lizzie liked the boat, loved us, especially Geoff and hated the sound of the boat's engine. She would try to jump ship in any lock we had to tie on.

After the summer months we would go on our oversea voyages. Africa, North and South America, Australia and New Zealand. Sometimes we went on an Island cruise to see places like Madagascar and the Falklands and we found the most enjoyable trips were spent on cargo boats. One year we visited both the north and south pole in their respective summers, seeing bears in the arctic and penguins in the Antarctic.

Geoff then had a new project, converting

a 10-berth hire boat into a comfortable home on the water. He would take his bike with him on Eurostar, take the train to Paris, cycle to the next station, and arrive at the boatyard to do some work and come back the following day.

This boat was renamed Boucanier, in memory of the red boat. One day while waiting for the lock gates to open, an elderly Frenchman asked me if I knew what *bouccanier* meant. With a big smile he translated it to 'The Old Goat'. Geoff was not amused when I told him.

When the days of our trips passed, we were able to spend more time with our families. We enjoyed celebrating many birthdays and other occasions, both families coming together.

When Geoff was diagnosed with dementia it was a shock for us all. Dementia is tough for everyone but Geoff's care for his family never left.

At my last visit to him before he died he told me 'you're quite a woman aren't you'. When I asked what he meant he had the old twinkle in his eye and repeated, 'well quite a woman'. I still do not know what he meant. I do know that he was quite a man. A man who loved and was loved by many.

Marathon Day



Gary Lloyd 4hrs:51mins with son Jasper



Holly Pearce 4hrs:27mins



Suzie Wood 4hrs:17mins

Unbelievably, the weather on Sunday 3rd October relented like the parting of the Red Sea, between the horrendous storms on Saturday and the grey and wet misery of Monday. The conditions for the London Marathon were almost perfect and the city and the amazing Londoners put on a wonderful show in support. This was worth the long wait since Covid forced the postponement of the April 2020 event.

I have run a few half marathons and managed the full distance just once in the virtual event last October. However, to run with almost 40,000 others on the proper London Marathon course was very special.

Our doughty team from Westhumble and Mickleham all completed the distance. Holly Pearce, Suzie Wood and Gary Lloyd ran in London and Immie Adshead and Colin Medway on their own chosen courses – Immie along



Immie Adshead 5hrs:02mins



Colin Medway 5hrs :17mins

the A24 between Denbies and Givons Grove; Colin choosing the flatter seaside stretch between Ferring and Goring. It is a bit early yet to tell whether any of us will run the London, or any other, marathon again. I suspect the younger

ones definitely will. In the immediate future, we will be cheering for Anna Darnell who will be running in the Liverpool Marathon on 24th October, having missed out on the London event due to an administration error.

Gary Lloyd

It is not too late in case anyone wants to give to any of the excellent charities for which we are raising funds:

Suzie Wood: Guide Dogs – <https://uk.virginmoneygiving.com/SuzieWood>

Holly Pearce: Breast Cancer Now – <https://www.justgiving.com/fundraising/Holly-Pearce97>

Gary Lloyd: St John Ambulance – <https://www.justgiving.com/fundraising/Gary-Lloyd44>

Colin Medway: Multiple Sclerosis Society – https://uk.virginmoneygiving.com/19966_8889604_63451



Macmillan Coffee Morning Update

A big thank you to everyone who supported the Macmillan Coffee Morning at Chapel Farm. Despite the showers lots of people came along and it was great to see friends old and new. Our final total of funds raised this year is £ 1,524. This means a huge amount to the charity. Thank you to all who baked, attended and donated. Liz Absalom



Can you translate this diagram into words?
Say what you see.

just

Answer on page 26

Mickleham Parish Magazine 'Christmas Card'

As in past years readers who would like to send Christmas greetings to their local friends by way of the magazine and donate the money saved on cards and postage to charity should contact Sue Tatham.
01306 882547 editor@micklehammag.co.uk

The copy deadline for the December magazine is Sunday 7th November

The charge is £10 per person (£20 per couple) but if you would like to give more, that would be great.

Proceeds again this year will go to St Michael's C of E Infant School and St Michael's Community Nursery

MICKLEHAM CHORAL SOCIETY CONCERT FOR REMEMBRANCE SUNDAY

Conductor – Juliet Hornby Accompanist – Judith Flint

Sunday 14th November 6 pm

St Mary & St Nicholas Church, Church Road, Leatherhead KT22 8ND

Tickets - Adults £10, Children under 12 £5 Anne Weaver 01306 883932 secretary@micklehamchoral.org.uk



Regular Lawn Mowing
Lawn Care & turfing
Pressure Washing
Hedge Trimming
General Garden Maintenance

phil@philsmowingdorking.co.uk
07905 160765



HANNAH SCHELLANDER
HYPNOTHERAPY

Struggling with anxiety?

Online
sessions
available

07846 508117
WWW.HANNAHSCHELLANDER.COM

We provide the best
possible care for your feet

Book your appointment:
01372 454583



Bookham
Chiropody & Podiatry Clinic
Diagnosis, Expert Treatment & Professional Care
for Your Feet

29 High Street, Great Bookham KT23 4AA
www.bookhamchiropody-podiatry.co.uk

Painting

Decorating / tiling
Wallpapering

- Fully insured
- Free estimates
- References available

Tel: Martin 07770 441201



Vivien Cresswell
Made-to-measure Soft Furnishings

Curtains Roman Blinds Cushions



Extensive range
of fabrics
01737 843858
info@cresswellscurtains.co.uk
www.vivienecresswell.co.uk

Mike Palmer

Electrical Services

Part P registered electrician



From additional lighting and sockets
to complete rewires

Fully insured Registered with the NICEIC

07866 930483 mike@mikepalmer.biz
Boxhill Way, Strood Green, Betchworth RH3 7HY



KING WILLIAM IV

Hello all

Sorry that Anne and I haven't been about much recently. Anne had to go into isolation in our flat in Littlehampton after contracting Covid and I had to go A&E after my back went again causing my knee to swell also, leaving me unable to walk. Anne is now recovered and I am slowly rehabilitating so we hope to be able to see more of you soon.

The pub is now moving more indoors and we have increased our inside capacity so is now super snugly with a real fire being lit each day. New autumn dishes have been added.

We hope to see you soon. Eamonn and Anne

Byttom Hill Mickleham 01372 372590 www.thekingwilliamiv.com

Mickleham and Westhumble Horticultural Society

Autumn Bulb Planting



Autumn is the time when we should be thinking about bulbs and the many ways we can use them to advantage both in the garden and in the house. We all enjoy the early crocuses and daffodils that brighten gardens and road verges when trees and hedgerows are dormant and now is the time to add to your garden display. Take care to buy bulbs that are suitable for naturalising if they are to be planted in grass as they will withstand the competition. Quite apart from daffodils and crocus there are plenty of other bulbs to choose from. Although less common there are tulips that will succeed in those conditions, but again you need to select carefully.

The usual advice about planting in open ground is firstly to scatter a handful of half a dozen bulbs or so, a bit like a farmer sowing seeds, so that they fall randomly and give a natural look. They should then be planted at a reasonable depth not just underneath the surface,

if you are looking for them to survive. This way you can create a meadow-like effect of mixed or single colours.

Tulips also do well in borders, of course, where they can be planted in blocks of colour in a formal display or interspersed with perennials that will still be young and small enough to provide a green background without detracting from the blooms. You can plan your foliage to set off the tulips, using variegated foliage perhaps to pick up a yellow flower or contrast with a red or even a bi-colour: the possibilities are endless! Bulbs are very happy in containers and can provide a colourful welcome in your porch or floral decorations for windowsills. You could mix small bulbs, such as *Iris reticulata*, miniature daffodils or muscari with tulips but single species of bulbs make an excellent show on their own account. Grouping pots together for a mass of colour is very effective. Of course, once they

have died down they can be lifted and replanted in borders or stored. Your containers are then free for annuals or other tender perennials.

To come even closer to home, you can buy bulbs for forcing that will flower at Christmas. These need planting in containers and kept in the dark until they start to shoot when they can be brought out into the light but in a relatively cool place so that they develop slowly, otherwise they will have flowered far too early. Indoors, you have the added bonus of scent from for example Paperwhite Narcissus, which will waft gently through your rooms during the Christmas festivities.

Judy Kinloch

P.S. Looking at bulb catalogues on line or in catalogues will give you a wide variety of choice and fresh ideas that you can not hope to find at garden centres. I would recommend it!



The Central Surrey Community First Responder Team

of backgrounds, volunteering around our family and work commitments and share a common interest in helping people in our local community.

Our work is very varied, and we never know what each shift will bring. We can be called to a trauma patient, to an anxious person who needs reassurance and a cuppa or to an unconscious casualty in need of immediate lifesaving resuscitation. Every call is worthwhile. We make a difference for patients in our community and for the crews we work with.

Our team also offers training to local community groups, clubs and organisations in the use of

defibrillators, basic life-support techniques and immediate first aid. Being able to provide effective chest compressions can be the difference between life and death of a loved one.

SECAMB provides us with our equipment, on-going training and a basic uniform. However, we are always looking for extra funding to expand our work in the community.

If you would like any further information or are interested in organising a lifesaving training evening or in joining our team, as an active responder or fund raiser, do please get in touch.

Elizabeth.Absalom

Elizabeth.Absalom@SECAMB.nhs.uk



St Michael's Church Community Group FOOD BANK

Suitable items include non-perishable food, cleaning, personal hygiene and baby supplies. See page 5 for local collection points.

Do you need a plasterer?

Over 25 years' experience working on extensions, renovations, new-build and conversion projects for builders and domestic customers alike.



Our work is to a high standard and we are fast. Give Chris a call for a free, no obligation quotation.

**CHRIS C GUY
PLASTERING LTD**

ALL ASPECTS OF INTERNAL & EXTERNAL PLASTERING
07740 860560 chrisguyplastering@gmail.com

Julie Watts Family Law

AN AFFORDABLE AND EXPERIENCED PROFESSIONAL
ALTERNATIVE TO TRADITIONAL SOLICITORS

- Divorce • Arrangements for children • Finances
- Court Proceedings

PROUD TO PROVIDE A DIFFERENT KIND OF SERVICE

- Affordable fees • Straight-talking advice
- Practical real support

Contact me for a consultation

07808 572157 juliewattsfamilylaw.co.uk

Domestic Appliance Repairs

30 years' experience repairing and installing
all gas and electric domestic appliances



- Cookers Microwaves
- Dishwashers
- Washing machines
- Fridges / Freezers
- Water coolers
- Coffee machines
- Tumble dryers

Contact: Andy 07895 719706
andy@kirksdomestics.co.uk



07871 051661 / 01372 458616
timskerittgroundworks.co.uk

TimSkerritt
LANDSCAPE & GROUNDWORKS

Turn your vision into a reality

Tim Skerritt Landscape & Groundworks offers a
comprehensive range of services to both commercial
and domestic clients across Surrey.

From hard landscaping to extensive site excavations,
we offer a high quality, honest, reliable and competitively
priced service, guaranteed to meet all your needs.
Contact us today to find out more.



Open
Monday to Friday
8 a.m. - 5 p.m.
& Saturday
8 a.m. - 1 p.m.

All leading makes of lawn mowers

& garden tractors catered for

Reasonable rates

Free estimates & friendly service

Paul White Bookham 01372 458008

PAINTING DECORATING

ANDREW CLARK 07800 796 737

INTERIOR & EXTERIOR • CARPENTRY • HANDYMAN

Dorking Pest Control Services

Local Authority Approved Contractors



Our Services include: Wasps Bee Swarms Hornets Rats Mice

Squirrels Fleas Flies Ants Cockroaches Bed Bugs

Rabbits Moles Foxes and Deer



• Domestic Commercial and Industrial • Contract Work • Preventative Control Programmes

Experts in pest control throughout Surrey

Office: 01306 743001 Ivor: 07710 117491 Chris: 07971 519415

www.dorkingpestcontrol.com



Cryptic Delicacies

Last month's theme was WILLIAM BOYD and his 16 novels, and it certainly added an extra dimension to the setting of the puzzle to have to include the words from all the titles at least once in the clues and answers (see Wikipedia for a list of all the titles). The only one of the 16 not to be included was 'BRAZZAVILLE BEACH', coincidentally the first of his books that I read (it was a birthday present from my sister in the early '90s, near to the beginning of my Group Photograph project). My favourite of his books is 'ANY HUMAN HEART', which rescued me during a research trip to Australia by enabling complete distraction from some difficulties that threatened to overwhelm me. As well as being a compelling account of someone navigating the 20th century with the imperfect compass of a public school education and a strong libido, it also provided inspiration through its basic wisdom that, at any point, life can turn on a sixpence, both for the terribly bad or the amazingly good – and that was further exemplified by the fact that, 16 years after I read that novel, William Boyd agreed to write the Foreword to my latest book. Not only did he contribute a fantastic addition to the text but he also opened doors that led to our appearance together on the Radio 4's *Today* programme and to pieces in *The Telegraph* and *The Sunday Times*. My book launch would not have been the success it was without his enormous kindness and generosity.

I am having to send this article in before the deadline for prize entries, so will report on the competition next month. Here are some of the clues dissected, with definitions underlined:

4 Broadway is gone for stars beginning to booze before they're written in for performance? (4)

BARS

'Broadway' is a synonym of street, or St, which when removed from stARS leaves ARS, 'beginning to' 'Booze' is B which is put before, giving BARS, the bits of musical notation that songs are written in. A bit tricky, but there was an additional clue in that 'STARS

& BARS' is a William Boyd novel (so this gave both sides of that particular coin), and with the puzzle's special instructions saying that the words of all his novels but one were in the clues or answers, anyone with enough time on their hands could have gone through the lot to find this!

29 It's best to draw after having pot (4,3)

BEER GUT

'best' = BEER (as in 'a pint of best'), 'draw' = GUT (as in the second phase of 'hanging, drawing and quartering' where the guilty party is eviscerated). Again a bit tricky, so I added an extra clue at 6 DOWN which pointed to this not being caused by Adam's ale, i.e. water, the drinking of which does not lead to a BEER GUT. I realise that my attempt at helping may not have been entirely without its own problems.

3 Small person not waiting in the middle for long (4)

ITCH

'waiTing' in the middle = T, so 'not' T leads to removal of the first letter from tITCH (= 'Small person') to give a version of 'long' that is to do with a desire that won't go away, like that of wanting to throw cow dung at those who abuse power in high office.

16 Tough projections usually regularly presented in the face of American power (5)
TEETH

Here you need to think that the definition might be 'power' and then read the rest of the clue without that word, the rather cryptic phrasing pointing to the stereotype that Americans' teeth are more orthodontically enhanced than those of their British cousins – and the definition is as in 'facilitating the public to throw cow dung at those guilty of abuse of power in high office gives teeth to the law'.

21 The second in artist's extended sequence of performance pieces (3)
RUN

The second in 'aRtist' is R, which is an abbreviation that can be 'extended' into RUN (as in a score in cricket).

26 Hello, say briefly what can be thrown in the face as a source of superstition (6)

MAGPIE

'Hello' is an example ('say') of a magazine, which 'briefly' is MAG, 'what can be thrown in face' = PIE (for hilarious comic effect).

30 Goes out with babes not bothering with a disguise (4)

EBBS

BaBES not bothering with 'a' is BBES and 'disguise' is an instruction to anagram.

Always good to get ideas of things to discuss in my article, so any responses or queries will be happily received at andrewt@andrewtatham.co.uk

Andrew

Photograph: Richard Siberry



Churchyard spinning competition winners on a misty September morning

10 Year
Manufactures
warranty available
with any new boiler
Oil, LPG and Gas Registered

**SE Plumbing
& Heating**

Call for a free quote on
01306 735499
www.seplumbingandheating.co.uk

Checkatrade.com
Where reputation matters

TONY WINCH
**CARPENTER, JOINER
& CABINET MAKER**
www.tonywinch.com
01306 742373
07969 016 924

Get IT Fixed, Get IT Connected
Expert Repair & Maintenance



Brockham based. No call out charges. Fully transparent quotations with no hidden costs. We make technology work for you.

Call us now on **01737 845980** ChalkHill Systems
www.chalkhillsystems.co.uk

Building Plans
For home improvements & extensions
Including planning & building regulations
Fast efficient service at competitive rates

MICHAEL LLOYD CEng MICE
For free consultation:
Phone: 01483 205479 or 07958 791 402

R A BUTLER
INTERIOR AND EXTERIOR
PAINTING & DECORATING
OVER 30 YEARS' EXPERIENCE

**BUILDING
REPAIRS
UNDERTAKEN**
PATIOS DECKING ETC NO JOB TOO SMALL

LOCAL REFERENCES IF NEEDED
01372 372586 / 07776 256131

RWP
Extensions and alterations often require a
Structural Engineer

Robert Wynter & Partners Ltd
01306 879875
Book House Vincent Lane
Dorking RH4 3HW

remedial roofing
For people with roof issues and deficiencies

- New roofs – slate & tiled roof specialists
- All roof repairs, moss removal & gutter clearance
- Flat roofs, traditional felt & GRP fibreglass
- New uPVC Fascia, soffit & guttering

Obtain an up-to-date report of remedial roofing on www.checkatrade.com

ALL WORK GUARANTEED
Call us today for a FREE quotation on:
01306 304736 | 07852 833802
info@remedialroofing.co.uk www.remedialroofing.co.uk

Confederation of Roofing Contractors
The Premier Roofing Trade Association in the UK
All Members Offer Insurance Backed Guarantees

Checkatrade.com
SURREY
TRADING STANDARDS
APPROVED

Woodland wonders

No longer in the inbetweeny waterproofs or no waterproofs stage, exploring the local woodland and using its resources in play is one of the delights of being in Mickleham. This term we have a new Forest Friend 'Hedgy the hedgehog'. Actually a pen holder, but delightfully sensorially smooth. The children love collecting sticks to make him new prickles and build him dens from the sticks that they discover are too large to fit in the prickly holes.

This is absolutely mathematical learning through play. They also come up with new ideas and stories about why he may have lost his prickles and show empathy for how he may be feeling...

and what they can do to make him feel better, which often includes a swing in the hammock.

This term the nursery is fortunate to have two visiting artists who will be working with us on an action research project, funded by Paul Hamlyn Foundation and led by Take Art. The project aims to support artists and Early Years practitioners to learn together about each other's working practices and how arts activities may be interwoven into the everyday running of provision. Those that follow nursery articles, may recall past projects we have been involved in, including the creation of a mini moo for the Surrey Cow Parade back in 2016.



Always welcoming creative inspiration, the new project has musician Kate Comberti and visual artist Charlie Betts, working with us, following the creative development of our children. Watch this space for creative updates.

Hilary Budd



St Michael's Community Nursery
CHRISTMAS FAIR
Saturday 4th December
11am-2pm Mickleham Village Hall

Do join us for our Christmas Fair in aid of St Michael's Nursery. This year we welcome a number of small business and local craftspeople who will be selling festive and Christmas gifts from perfumes to jewellery, hand-made bags and purses, advent calendars, papercraft and Christmas decorations.

We will be presenting our traditional raffle, tombola, toy stall and children's crafts together with a visit from the Man in Red himself. Join us for some festive shopping and listen to carol singing while you enjoy some lunch or tea and homemade cakes.

This will be our first Christmas fair in two years, so please support our lovely nursery community. We hope to see you there!



Mickleham Village Hall Dell Close

Weekdays 9.15 am - 12.15 pm (term time)

WITH OPTIONAL LUNCH CLUB

On Mondays and Thursdays there is the option for children to stay until 2.45 p.m.

Maximum 26 children per session

• playing naturally • learning naturally

We offer an excellent range of pre-school activities for 2½ to 5 year-olds where they can learn through play in an informal friendly atmosphere.

Contact us for more information about admissions

01372 361021 www.stmichaelscommunitynursery.co.uk

Solution to the October crossword

Across: 9 Heart 10 Armadillo 11 Crêches 12 Rampage 13 Jests 15 Imp 16 Tea 17 War 19 Endorse 20 Err 23 Set 24 Any 25 Human 27/29D William Boyd 29 Beer gut 32 Obstinacy

Down: 1 Chic 2 Caress 3 Itch 4 Bars 5 Improperly 6 Adam 7 Cleavage 8/33 Love is blind 13 Jaw 14 Sweet 15 Indian meal 16 Teeth 18 Restless 21 Run 22 Powwow 26 Magpie 28 Iris 30 Ebbs 31 Tide

BRAIN TEASER answer: Just right



All Saints Coffee Shop

Kingston Road, Leatherhead KT22 7BT

We are open with seating indoors and outside and for takeaways

8 am to 3 pm Monday to Saturday

Enjoy a range of speciality hot drinks, handcrafted sandwiches and home-made cakes

www.facebook.com/allsaints.so/

Instagram @allsaints_so



01306 885533

Enquiries@dorkingtaxis.co.uk

www.dorkingtaxis.co.uk

For immediate service please telephone. Future journeys (48 hours ahead) may be booked by email.

- 4/6/8 seaters • Home to school transport
 - Transport to airports/ferry ports/Eurostar
 - Courier services • Long distance journeys
- All drivers & vehicles are fully vetted by MVDC & SCC / Female drivers available on request
All major card payments accepted



Joseph

De Decorators

- Painting • Decorating • Wallpapering • Plastering • Tiling

Mickleham based 40 years' experience

01372 372331 07973 358 932

NEED A CARER?

Highly qualified professional carer
Hours to suit References available
Call Cheryl 07810 881267

Our Autumn Term so far

Harvest

The children celebrated harvest by taking part in a harvest worship. The reception children thought about all the fruit and vegetables that they love. They painted their favourite ones and shared their artwork with the school. Year 1 children learned harvest poems and recited parts of these. Year 2s wrote their own harvest prayers. They thought about what they were thankful for and how lucky they are that God's wonderful world produces fresh, healthy food for us all to enjoy.

A fun worship was enjoyed by all, and it really supported the children's understanding of where our food comes from, how it gets to our homes and why we need to be thankful for this.

Space Dome

Our topic this term is 'Take Off'. We have been learning all about space and the solar system. To enhance the children's knowledge and understanding of our topic, we had a mobile planetarium in our hall. Once the children stepped inside, they were treated to a virtual space experience. The roof opened and the stars came out. Guided by an astronomy expert, they were helped to learn about space in an interactive way.

Meet the teachers

This term we held our 'Meet the Teacher Curriculum Evening'. There was a real buzz in the school as we were able to invite parents in and have that vital, face-to-face communication.



stmichaels-dorking.surrey.sch.uk/

Afterwards we held a small event in the hall where parents were able to meet, buy their child's artwork and have a tea or coffee.

From all the lovely feedback, it was clear that the parents appreciated being able to chat with the teachers, visit their child's classroom and learn more about our curriculum and the new vision for reading.

Nicola Cleather
Head of School



Clockwise from top left: Sharing our favourite fruit and vegetables at our Harvest Assembly; Outside the mobile planetarium; We learned about our solar system



Christmas Tree Sale

If you enjoy a 'real' tree at Christmas, please consider ordering yours from the Friends of St Michael's and help raise some money for the school. After a bumper 2020 we hope that it is equally popular again this year.

We will again be offering very high-quality non-drop Nordman fir trees for collection from the school on Sunday 5th December. Trees are available from 3ft with prices starting at just £30.

To register your interest or for more information, please contact us at friendsofstmichaels2017@gmail.com



Christmas Eve Crib Service

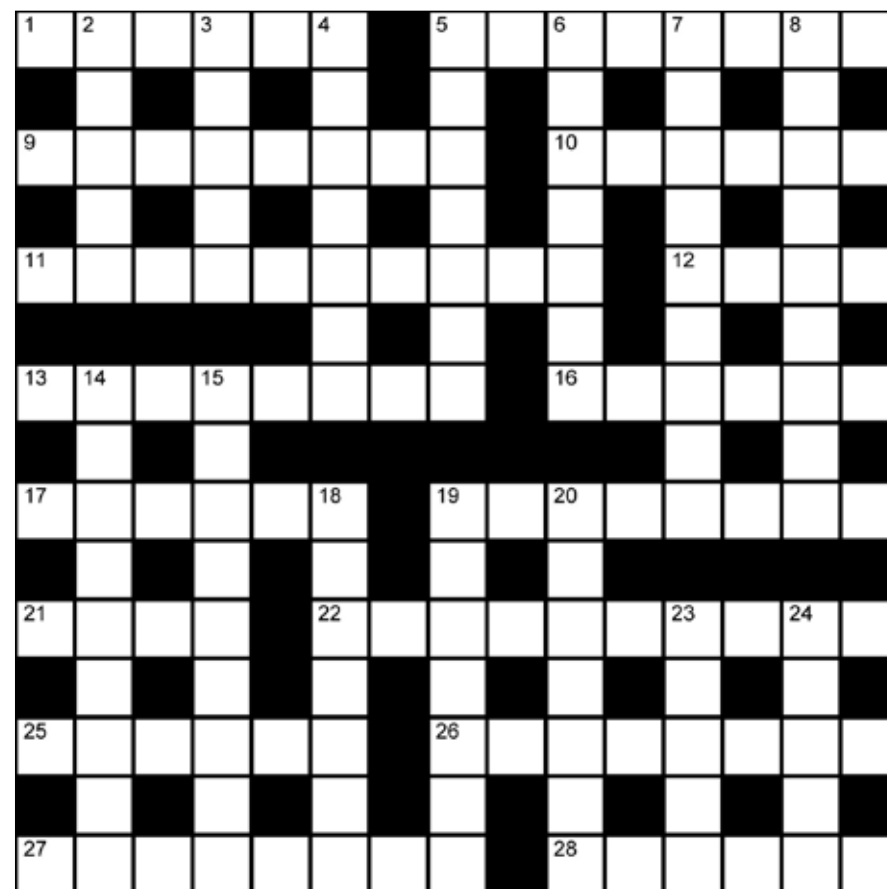
4 pm

Westhumble 'Bonfire Field'
See page 6 for more details

Cryptic Crossword

Across

- 1 Get into the groove with this exhortation to make you and me in vogue on the airwaves (6)
- 5 See 28
- 9/15 It's ludicrously funny if tie torn free when 28 5, 18 11 & 19 10 first came on the scene (8,5,4)
- 10 See 19 Down
- 11 See 18 Down
- 12 Departed having consumed lager top at the kickoff (4)
- 13 Lots of red tape to be filled in after somersaulting salesman appears on stage (8)
- 16 A clip of Patsy Kensit in 'Strictly Come Dancing' leads to protests (3-3)
- 17 Criminal tailor has a way with ducks? (6)
- 19 Go before little Edward becomes affected by trapped gas! (8)
- 21 Grow cloudy at last, ready for rain drops to roll down? (4)
- 22 Head off for holidays taking liquid remedy for bugs (10)
- 25 Oi, monk, let loose to this long heavy number! (6)
- 26 As cinema goes under new management, one loses track of history (8)



- 27 Action taken about one leaving university half cut and unrestrained by morality (8)
 - 28/5 Disturbing story for those filled with fury (4,2,3,5)
- Down
- 2 Criminal leads to this hike in entry fees (5)
 - 3 Christopher's leading couple to follow him famously as a blood sucker? (5)

- 4 Someone who blinds is wearier without eyes, it's heard (7)
- 5 Those lodged in back pocket after deductions by soldiers (7)
- 6 Volunteers to mend skinned heels (7)
- 7 When acting out the rhyme, wee repeatedly escaped from this toilet left to disintegrate (though not loudly!) (6,3)
- 8 Flouncing around, exit scene in the performance of 'To be,....' (9)
- 14 Tom may be needing oxygen up front, with drip being put in the day before moving (9)
- 15 See 9 Across
- 18/11 Disorders frighten her, so told a preposterously long story (3,4,2,3,5)
- 19/10 The exciting story is I've ended it all in a blender (4,3,3,3)
- 20 Half of vicars take back way to find a source of explosive material (7)
- 23 Authorise regular publicity content for one of Steps (5)
- 24 Sounds like picture in a book is by old philosopher (5)

Andrew Tatham

The solution to last month's crossword is on page 26.



Leladene arch gets a facelift



**RESIDENTIAL • COMMERCIAL
AGRICULTURAL • SCHOOLS • ACOUSTIC
HOARDING • GATES • SECURITY**

RICHARDSON & BRADS FENCING LTD
T: 01306 640 143 - 01483 414 745
 E: INFO@RBFENCINGLTD.CO.UK
 W: WWW.RBFENCINGLTD.CO.UK
 A: 168 SOUTH STREET, DORKING, SURREY, RH4 2ES
 UNIT 45 MARTLANDS INDUSTRIAL ESTATE, SMARTS HEATH LANE, MAYFORD, GU22 0RQ

J S Wilson

Mickleham

Carpentry & Building Services



Extensions ~ Conversions
 Refurbishments ~ Property Maintenance
 Fully guaranteed ~ Fully insured
One call WILL solve it all

Contact Jason on: 07761 926684 or 01372 379359
 jswilsonconstruction@gmail.com



Bespoke, quality kitchens

designed & supplied by Jan Callicott of Westhumble.
 Contemporary or traditional cabinetry with a friendly, pragmatic project management style.





www.eatonsquareinteriors.co.uk
 enquiries@eatonsquareinteriors.co.uk
 07873 216111

BLANCO Quooker®


Eaton Square Interiors
 Meetings by appointment

Need help with your accounts?

Running a business needs time and energy – don't waste your time working on your accounts when you can work on your business instead!

At a4c we provide fixed fee accountancy solutions with friendly support throughout the year. Services include accounts, tax returns, VAT, payroll, book-keeping etc.

Friendly, approachable and local to Dorking – we enjoy getting to know our clients so call us today for a no obligation chat.

We LOVE numbers so YOU don't have to!

01737 652852

esther@a4cgroup.co.uk

www.a4cgroup.co.uk



**RANMORE
RENOVATIONS**

LOCAL BUILDER

New bathroom installations,
re-design, renovations,
plumbing/heating,
electrics, plastering & tiling,
decorating, Karndean flooring,
all building works.
All works guaranteed
fully insured
35 years' experience

Please contact Damian
07940 599845 / 01306 880332
musgrovebuild@gmail.com

GREAT MINDS

DON'T THINK ALIKE

Learners Today, Leaders Tomorrow



At Box Hill School, we understand all students are individuals and approach learning in different ways. Our holistic approach to education develops our children's intellectual, social, physical and artistic talents. It encourages them to explore a path of self discovery thus stimulating the unique abilities within each child to achieve success.

INSPIRATIONAL
Box Hill School

DAY, WEEKLY & FULL BOARDING

Box Hill School | London Road | Mickleham | Dorking | +44 (0)1372 373382 | admissions@boxhillschool.com
boxhillschool.com

MEABY & Co

solicitors

Strength & wisdom in law & business since 1848

Meaby & Co Solicitors sits proudly in the heart of Dorking High Street providing expert legal advice to individuals and businesses throughout the town and its surrounding area. With additional offices throughout London, our experienced team, our 5* Google reviews and award winning service will ensure that all of your legal needs are supported on your doorstep.

Specialising in:

Residential & Commercial Property	Fraud & Private Crime	Reputation Protection
Wills, Trusts & Probate	LGBT Experts	Commercial & Corporate Law
Litigation and Mediation	Employment Law	Media & Entertainment
Crisis Management	Family & Divorce Law	Lease Extensions

Drop by our offices at 159 High Street, Dorking RH4 1AD or contact our switchboard on 01306 884432.

Need advice elsewhere? We can assist. We have branch offices in Camberwell, Soho & Chigwell.

Switchboard: 01306 884432 www.meaby.co.uk @MeabyandCo meaby-&-co MeabyandCo meabyandco



John Wadsworth



CALL NOW FOR YOUR FREE VALUATION
01372 450500

www.johnwadsworth.co.uk sales@johnwadsworth.co.uk
A professional efficient and friendly service