

MICKLEHAM PARISH Magazine

A community magazine for Mickleham and Westhumble



A.N. Colwell 1984

May 2025



**SURREY HILLS
HEATING LTD**

**DOMESTIC BOILER SERVICING
AND BREAKDOWN**

OIL, LPG & GAS BOILERS

Call Dathan on: 07944 575970

sales@surreyhillsh heating.co.uk

www.surreyhillsh heating.co.uk



Bullimores



Accountants for Life

Tax • Accounts • Probate

Inheritance Tax &
Executorship

T: 01306 880880

E: partners@bullimores.co.uk

W: www.bullimores.co.uk

Bullimores LLP licensed to carry out the reserved legal activity
of non-contentious probate in England & Wales by the ICAEW



Stepping Stones

MORE THAN JUST A PUB

CAFÉ-BAR RESTAURANT & ALFRESCO DINING

Live music events Take-aways available

Available for functions / private parties / celebrations / family gatherings

Every second Tuesday
of the month
from 7 pm

Quiz Night Tuesday 13th May from 7 pm
teams of up to 6 people

01306 889932

steppingstonespub@gmail.com

www.steppingstonesdorking.co.uk

*Please check website for up-to-date menus
events and current opening times*



Sixth Generation Family Business

24-hour Service, Funeral Plans, Free Advice on all Related Matters,

Free Parking On Site, Memorial Masonry

Trellis House, 190 South Street, Dorking, Surrey, RH4 2ES

01306 882266

office@sherlockandsons.co.uk

www.sherlockandsons.co.uk



MICKLEHAM PARISH Magazine

May 2025

Mickleham Rectory

Mickleham Parish Magazine

A community magazine for
Mickleham and Westhumble
published under the auspices
of Mickleham PCC with an
independent editorial panel.

The magazine is published at the
beginning of each month except
January and August.

COPY DEADLINE

JUNE MAGAZINE

Sunday 11th May

send to:

editor@micklehammag.co.uk

Co-editors

Charlotte Daruwalla

07933 300744

Jan Budleigh

07780 976301

Contributions in any form
are welcome as are good
quality photographs. There
is no charge for advertising
local charity and community
events. However the editors
reserve the right to shorten
omit or reformat articles
submitted for publication
depending on space.



Printed by Holbrooks Printers
Portsmouth

Dear friends

What have you celebrated recently I wonder? A birthday or an anniversary perhaps. I have found it helpful to reflect as well as celebrate. Each birthday offers an opportunity to think about what and who I am grateful for, what I have achieved and what remains to be done. Anniversaries of course remind me of the event. Some I greet with sadness as I remember those I have loved and lost on particular dates. Some I greet with happiness as they have changed my life for the better such as starting university or my ordination to the priesthood 20 years ago or the birth of my children. Some I have mixed feelings about such as the diagnosis of breast cancer in May 1995, which was a terrible shock.

Suddenly I faced an uncertain future, maybe even death and a traumatic time of hospital visits and stays and treatment. It was hard on my family, particularly as my children were very young but I was overwhelmed by the kindness and support from my family and friends and my church, who took my children on outings and gave them treats, provided lifts, delivered meals and shopping and were positive and encouraging. Many of those friends I knew from the church toddler group and I do hope when we start the new one in Westhumble Chapel on 9th June that mums and carers will meet and get to know each other better. Many of my friends also prayed for me and that really helped. I experienced God with me in a powerful way and it is my belief that God granted me healing, not in a miraculous way but through medical intervention. When we pray we cannot guarantee healing but I believe we can be sure that God will be at work and by faith and sometimes in retrospect we can glimpse how. I continue to feel deep gratitude to God and all involved in my treatment and recovery.

As we approach the 80th Anniversary of VE Day on 8th May there should be celebration, gratitude, reflection and prayer. We can celebrate the victory over Hitler and all he stood for. We can thank God and thank all who made sacrifices, particularly those who died or received life changing injuries or lost loved ones in achieving that victory. We can reflect on how we have benefited and what we can do to enable our country's values such as freedom, equality, compassion, justice, cooperation and peace to be enjoyed by all citizens. We can and should pray for lasting peace in Europe, particularly for Ukraine and for all our neighbouring countries in these uncertain times. With all that in mind we are inviting everyone in our local community to come to the special VE Day Service at 10 am on 4th May at St Michael's so that we can mark this special anniversary together. The celebrations will continue after the service with refreshments in church and the opportunity to picnic in the Rectory garden from 11.30 am. Please bring something to sit on, and family, friends and food! See you there I hope.

God Bless

Sandra

The Rev'd Dr Sandra Faccini, Parish Priest

St Michael's Church Services

10 am Sunday Services available on Zoom

Joining information for both Zoom and telephone users is available in Pews News Online each week. If you would like to join us by Zoom then contact Alison Wood for the codes or to ask her to include you on the emailing list for Pews News: admin@micklehamchurch.org.uk / phone 01372 376443. We hope as many of you as possible will be able to join us for worship. Please refer to Pews News Online for the latest information. If you missed any of the services or would like to revisit them all are available on the church YouTube channel: <https://youtube.com/channel/UCI4pbewCT91iZhcd0EjBlw>



Sandra says thank you to Catherine and Bruce

Some changes in roles at St Michael's

We held our annual parochial church meeting on 6th April when Catherine Diffey stood down after three extremely busy years as churchwarden. We are immensely grateful to her for her hard work and many achievements. As warden she was involved in many areas of church life including Sunday services, care of the church, chapel and churchyard, supporting many events, a lot of administration and some

projects such as the chapel heating and electrification of the church clock. We are also very grateful to her husband Bruce who supported her and did many tasks for us. Catherine will still be part of the church family but will have a well earned rest from warden's duties.

We were very pleased and relieved to be able to appoint two new wardens: John Banfield and Lucy Adshead, and that Tim Mathieson is remaining

as deputy. We also thanked those standing down from PCC at the end of their terms of office; Mark Day who served for 6 years, and Sarah and Kelvin Pritchard who served for 3 years. They have all made significant contributions to the church and we are grateful they will continue to support the work of the church. Newly elected members of PCC are Amanda Wadsworth, Susan McGrath and Paddy MacVean.



St Michael's Church Community Group

News of the group's upcoming events provided by Kelvin Pritchard



Lent Lunches – A lovely time for all

What an amazing series of Lent lunches with truly scrumptious soups and cheeses, with the room bustling with conversation and laughter. We even had children from St Michael's school come and sing Easter songs for us which was very heartwarming.

A special thanks to all tho who made this possible, the soup makers providing

five different soups each week, the many working behind the scenes to make the event possible and those who helped set up. A special thanks to those who kindly worked in the kitchen to serve us all. Congratulations to Andy Diamond for all the organisation, a hugely successful event which has raised over £800 for local charities.

Church Website – Mickleham.church

Work continues on the new Church Website <http://Mickleham.church> with the calendar now up and running. The main features include:-

- * All the church and related events have been added
- * You can filter by event type
- * View details of specific events and register that you are going
- * You can subscribe to an event type which means it will add the events to your phone diary and keep it updated on any changes.

So give it a try!

We are very grateful to Cassandra Charles-Bagott for her continued efforts in creating this website for us. Your hard work is greatly appreciated, Cassandra.

Foodbank Update – Please help if you can!

Foodbank donations have fallen since Christmas, I am sure that there are many reasons, but we do need your help to bring them up again. What we would really appreciate is regular donations, however small, even if it's just one item a week. That way the Foodbank can plan and find ways of making up the difference. We currently need to find £8,000 per month to bridge the gap between the need and what is donated.

A personal thank you to everyone who has donated and continues to do so – you are truly amazing.

Kelvin Pritchard, Mickleham Church Community Group.



Mums and Toddlers Group Westhumble Chapel Starting Monday 9th June 11am - 12 noon All welcome

We are inviting mums and carers of pre-school children to come along to the Chapel between 11 am and 12 noon on a Monday morning once a month. Your child or children

can play with toys, do a craft activity, hear a Bible story and sing and the adults can enjoy a chat and a coffee or tea.

The first is on 9th June as a trial and will be free. We then plan to run the group

on the second Monday of the month from September.

Please put the date in your diary and look out for more information in the next issue of this magazine.



Social gatherings open to everyone

Women's and Men's Saturday Breakfasts

9-10 am
at The
Stepping
Stones pub

WOMEN'S BREAKFAST

3RD SATURDAY OF THE MONTH

NEXT BREAKFAST

17TH MAY

Book with: Stephanie Randall
srandall55@gmail.com

MEN'S BREAKFAST

4TH SATURDAY OF THE MONTH

NEXT BREAKFAST

24TH MAY

Book with: Andy Diamond
new email adiamond714@gmail.com

Tea and Cake at St Michael's Church Sunday 25th May 3pm-5pm



First Saturday of the month

Coffee Morning

Westhumble Chapel

Saturday 3rd May

Come along between 10 am and noon

Coffee and cake £2 Free drinks for children
Everyone welcome

For further information call Jonathan Blake 07787 126966



Tea @ 3

Monday 19th May

Host: Rev'd Mandy MacVean
34 Oakdene Close, Brockham RH3 7JZ
If you can help with future events, please contact
Julia at siberrman@btinternet.com

ALL WELCOME TRANSPORT AVAILABLE

Parking in Oakdene Close is very limited so it is suggested that visitors park in Wheelers Lane (which Oakdene Close leads off) and then walk the short distance down the close.

Superb professional
cleaning of carpets
oriental rugs
upholstery curtains
and leather
Guardsman
anti-stain protection

- spot stain and odour removal
- leather cleaning specialists
- flame retarding
- dust mite reduction service
- all work fully insured & guaranteed

For a free no obligation quotation call today
Freephone 0808 144 9071
John Joannides 28 Bracken Close Bookham

Safeclean
The furnishing care specialists from GUARDSMAN



*Pinehurst
Rest Home*

We aim to provide an excellent service at competitive rates supporting emotional physical and social needs of our clients always respecting and protecting their status as adults.

- Residential and 24-hour daycare
- Excellent cuisine
- Facilities for disabled: medic bath / lift
- Home doctor in attendance
- Single & sharing rooms
- Convalescent & short stays
- Lounge with TV & piano
- Separate dining room
- Physiotherapist chiropodist & hairdresser
- Entertainment: theatre visits / parties & cabarets held on premises

National Trust Road Box Hill
Mickleham Dorking Surrey RH5 6BY
Telephone: 01306 889942 / 888253



SIMON HOOPER

For all your decorating needs...

Professional, friendly and speedy service at all times

- | | |
|--------------------------|-----------------------------|
| Fully insured | Insurance work |
| Exterior painting | Interior decorating |
| Free quotes & advice | Oil & Water-based products |
| Commercial/Domestic work | Wallpaper hanging & removal |

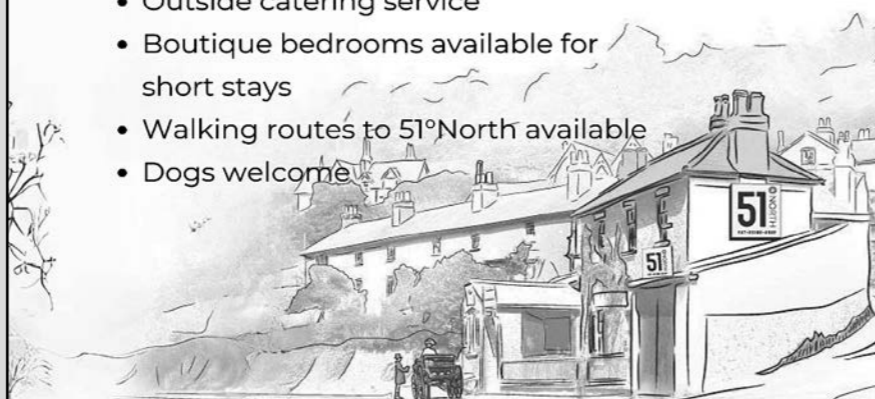
07947 135 376 0208 3978 962
www.slhdecoratingservices.com

51°NORTH

**SERVING DELICIOUS
BREAKFAST, BRUNCH
& LUNCH EVERYDAY**

GOOD TO KNOW:

- Full alcohol licence
- Venue available for private hire
- Outside catering service
- Boutique bedrooms available for short stays
- Walking routes to 51°North available
- Dogs welcome



LONDON RD, MICKLEHAM, RH5 6EH
FIFTYONE.DEGREESNORTH@YAHOO.COM | 01306 320455

*Dorking
Decorators*

PROFESSIONAL
PAINTERS & DECORATORS

Established Local Family Business

- Over 20 years' experience
- Internal & External
- Commercial & Domestic
- Friendly, First Class Service
- Surrey / Sussex/ Greater London

**FREE ESTIMATES
01306 640418**
www.dorkingdecorators.co.uk
As approved by Checkatrade

Church Eco-Group Sustainable Lifestyle: Part 1

Those of you, especially those with kids will, no doubt, have had pressure exerted to live a more sustainable lifestyle. But encouraging sustainability is also on the Eco-Checklist of the Church.

'...transformation at a local and personal level lays the foundation for change at a national/international level'.

Herewith, a few snippets relating to the main issues and links to a few of the copious sources of information when looking at you personal/family 'environmental footprint'.

Food

Eat seasonally and locally. Look at the source of the food you eat. Fairtrade products ensure that the environmental impacts are considered at all stages of production. The LOAF programme will help with sourcing local products. Choosing animal meat from higher welfare systems are often labelled on packaging.

The UK throws away circa seven million tonnes of food a year, much of which goes to landfill, producing methane on decomposition, a worse greenhouse gas than CO₂. Good read, Google: 'Love Food: Hate Waste'.

Plastic

The Church started a plastic-free Lent campaign in 2018. It remains a regular item for some parishes. It's too late

for this year, and it requires quite an amount of change and effort. Plastic-free packaged household goods are more widely available, but some were unkind enough to suggest that the extra miles to find plastic-free food rather offset the plastic benefits. Advice on reducing the 12.7 million tonnes of plastic, which end up in our oceans each year, can be taken from Greenpeace *Plastic Pledge*; Plastic Planet's *Plastic Free Aisle* or WRAP's *Plastic Pact*. Of the post-consumer plastic waste collected in the UK, only around a third is actually recycled, around a half is used for 'energy recovery' ie incinerated, and the rest goes to landfill. Until there is a great deal more progress on reducing single-use plastics, this will not materially change. But meanwhile, we can all improve a bit both at product selection, recycled and recyclable; and our own household recycling attentiveness.

If this magazine had been a couple of weeks earlier, we would have been suggesting plastic-free Easter Eggs: none of that plastic foil stuff: remember for next year.

Transport

In some respects the effects from transport are more difficult, especially in a rural location. Not all of us can afford or trust hybrid or electric cars, but we have a perfectly good bus service for local travel. The Church encourages locals to walk to church and has installed

a cycle rack, as are readily found at many locations in Dorking, for example.

Did you know that flying return to west-coast America, **emits (per person) twice as much CO₂ as the average petrol family car in a year. This rather puts other efforts to reduce carbon into perspective.** Some airlines offset the emissions for your flight, by investing in new fuel technology, renewable energy projects or other ecological projects worldwide. (Google: *Airlines which Offer Carbon Offsets*) You may be charged a premium for these offsets. Others are simply concentrating on improving fuel efficiency and reducing emissions per mile. You can also buy your own carbon offsets, to cover your travel mileage: (Google: *Buying Carbon Offsets*.) They are surprisingly affordable). Some business or personal travel has been reduced by Zoom and video conferencing.

And if you go to *Google Flights: Emissions*, there is a link which compares CO₂ emissions per person on different flights to the same location. Be aware though, the differences are relatively small in relation to the overall emission totals.

Next Month: Part 2 - Waste, Recycling and Energy

Church Eco-Group
Mark Day

Mother's Day Craft Workshop

The sun was shining and the spring flowers were blooming for this year's Mother's Day. The children from St Michael's school and nursery joined us to celebrate our wonderful mums. The church was filled with excitement as the children made special craft gifts for their mums.

After many years helping and organising the crafts for many workshops I will now hand over the crafting reins to another St Michael's mum. It's been lovely to be part of so many happy memories. Thank you to all the volunteers who have helped over the years as we could not do this without you all, especially my own mum. Rebecca Bevan



Team who made 75 posies for the Mothering Sunday Service. From left: Susie Gowenlock, Caroline Wilkinson, Elaine Machin, Beverley Mehta, Mary Flint and Alison Wood

For more pictures see page 27

Ukraine's Ongoing Pain

Despite Donald Trump's failed – and ludicrous – campaign pledge to stop the war on Day One of his presidency, he has at least created two positive trends. The first is to initiate an albeit flawed negotiation process; the second is to force Europe to act more decisively and cohesively to protect its own territory from external threats to its security.

Meanwhile, the war drags on. This is desperately painful to Ukrainians who day-to-day have to live with drone and missile attacks on their cities, be slowly pushed back along their eastern border and sustain large losses of injured and killed troops. On the Russian side, the limited territorial gains made at the expense of the huge numbers of killed and injured soldiers reveal the arrogant stupidity of Putin's illegal invasion. For both sides, the economic and human toll arising from Russia's invasion is enormous and regrettably shows little chance of ending soon.

We felt that the current US Administration's blundering Russian-centric diplomacy was all the more reason to show our Ukrainian friends that they have continued support in the West. Happily our renewed call for donations resulted in nearly £2,500 additional donations being generously given to our humanitarian and drone funds. With that we were able to supply a number of good quality sleeping bags, combat jackets and one-handed tourniquets, along with an additional



drone and three Starlink receiver terminals.

The photo above shows a still from a short video in which the soldier from Dmytro's unit (standing on the right of the photograph) gave the following message in English:

'Dear our English friends, we want to say a big Thank You for your help and support. Your Starlinks, drones and all the supplies you send make a real difference on the front line. Thanks to you, we stay connected, strong and ready to fight. Your support gives us hope and strength: we know that we are not alone. Together we stand for freedom and for justice. From all of us here, thank you.'

In the photo above right, a senior officer from 406 Brigade (with Eduard's mother, who helped deliver the goods to near the front line) said the following, translated from Ukrainian:



A senior officer from 406 Brigade (with Eduard's mother, who helped deliver the goods to near the front line) saying the following, translated from Ukrainian

'Grateful to the Lord for the hearts of caring for the 406 Brigade, it's special to us. ... Our artillerymen are the best, defending the most difficult areas of the front... We are very grateful that our guys feel your love through such powerful assistance. I hope this is just the beginning of friendship and cooperation with our Brigade. We are honoured to receive this assistance from you and thank you very much. Together, united, we will defeat this enemy, this darkness. Thank you!'

In addition, David Allbeury kindly donated a second 4WD Subaru. This was loaded onto a trailer to be taken to Ukraine (see photo), where it has already arrived along with ten other donated second-hand cars, which will be allocated to various front-line units. The need for such assistance was highlighted by Dmytro's comment to Eduard that four of their unit's vehicles – which are essential for transporting troops, the injured and supplies – were recently destroyed. The horror of war (and the need for the one-handed

Continued on page 7



Ukrainian front-line soldiers holding some of the sleeping bags and combat jackets that were sent in the latest shipment.



Mickleham Parish Magazine Annual Report

Another year has flown by, with the production of ten monthly magazines providing a steady rhythm to its passing. No magazine in August and January provides a much-appreciated break for the team twice a year. We say team, because the magazine truly is a team-effort. Every part of the organisation is essential to the rest. If any part was absent, the magazine could not be delivered free to more than 500 local households, plus copies left in the church and pubs for passers-by to pick up. There has been little turnover of personnel, all of whom are volunteers, and we very much value and are thankful for every single person's contribution.

Charlotte and Jan are very much enjoying collaborating as co-editors. They alternate being editor each month and are working so smoothly together, we suspect a reader could not identify who edited a particular month. Stephanie Randall continues as our main proofreader, with Sue and Ben Tatham and Sandra Faccini also checking the magazine for snags utilising their varied wealth of experience. Our printer, Holbrooks Printers of Portsmouth, continues to be highly professional and supportive to work with.

Sue is still our archivist and has been training Alison Walton to take over

the creative input to adverts in 2025. Sarah Penry, our advertising manager, has again done a sterling job signing up new advertisers to replace the few that have left in January when we do our annual overhaul of advertising space. We are so grateful to the advertisers as their payments fund production of the magazine plus allow us to contribute occasionally to local causes if any small surplus builds up. This year the magazine gave £2,000 to the church clock fund. Duncan Irvine has continued as our treasurer and has volunteered to take on more administrative duties on top. The production panel meet monthly to discuss the content of the forthcoming magazine and their practical help in finding interesting topics to include, plus their moral support in achieving what can be an arduous task, is much appreciated by the co-editors. Also in action every month is the delivery team, with Judith Cobby producing the labeling, Mary Venning completing single-handedly the bagging up of 600 magazines, the leaders of the delivery teams who collect multiple bags of magazines from Mary and each local deliverer who distributes the contents of one of these bags to their neighbours. We do not have space to name individual members of these teams but our



gratitude goes to every single one.

Of course, we would not have a magazine without content and all our contributors are highly valued. We are always looking for new, suitable content so if you have ideas for an article you would like to see published, please contact us via editor@micklehammag.co.uk, which both co-editors access. Similarly, Barbara Jones and Sue have done a great job this year supplying us with back page puzzles since Andrew Tatham sadly stood down his cryptic crossword. If you can create something you think readers would enjoy, please send it in.

Finally, we very much value you, the reader. There would be little point in everyone devoting the hard work necessary to provide the magazine if it was not read. Judging from the kind comments we receive, the parish magazine is still highly valued as a local resource even in today's largely online world.

Charlotte and Jan

Ukraine's Ongoing Pain *Continued from page 6*

tourniquets) is evident as in the latest destroyed vehicle one soldier lost both his legs and the other his eyesight.



Subaru 4WD ready to start its journey to Ukraine.

The sympathetic thoughts and actions of our community, the regular prayers for Ukraine at St Michael's services and elsewhere, and the generosity of those enabling material aid will all, we trust, strengthen the morale of those caught up in this terrible violence, comfort its many victims and help bring a just and lasting peace to Ukraine.

The organisers of this initiative:

- Eduard Popov liaises with front-line units he knows in Ukraine, and organises swift and cost-effective transportation of shipments;
- David Allbeury liaises with West-humble residents, and sources and packs the various requested items;
- Eduard's parents, Igor and Natalya, who live in Mykolaiv, supervise

delivery in Ukraine;

- Mark Day helps with general communications and advisory aspects;
 - Tim Mathieson helps with the organisation of the group.
- You can get more information, updates and photos, by joining our WhatsApp group **Ukraine Support**. Text Tim on 07555 597163 or email him, with your mobile number to TimothyMathieson@aol.com

The **bank accounts** for donations are:

For humanitarian donations:
Timothy Mathieson 04-29-09
39912167

For drone, Starlink receivers and/or humanitarian aid:
David Allbeury 20-26-22 60515442

Bliss Chimney Sweeps

All appliances swept

Traditional brush & rod Power sweeping

Pots & cowl fitted
Repointing, lead work & roof repairs

Fully insured Certificates issued
Free friendly advice
07739 638431
Blisschimneys@gmail.com

We provide the best
possible care for your feet

We've
moved

Book your appointment:
01372 454583 bookhampodiatry@gmail.com



Bookham
Chiropody & Podiatry Clinic
Diagnosis, Expert Treatment & Professional Care
for Your Feet

3 Hazel Parade, Penrose Road
Fetcham KT22 9PY
www.bookhampodiatry.co.uk

Your visiting



PHYSIOTHERAPIST

SUE JUDD MCSP HCPC

40 years of experience.

All your requirements for elderly
mobilisation & post-operative
rehabilitation.

07834 227 999 sue-judd@sky.com

TONY WINCH
CARPENTER, JOINER
& CABINET MAKER

www.tonywinch.com

01306 742373

07969 016 924

EDE BROS

REMOVALS · STORAGE · SHIPPING

- Since 1926, Capel-based and family owned
- STRESS-FREE, local, national & worldwide
- Contact us for your **FREE** estimate...

01306 711293
edebros.co.uk



P J Oliver & Son

Window cleaning

House & Garden Maintenance

Roof Repairs, Guttering

Painting & Decorating

Ground works, fencing, hedge cutting,
and tree work

Also Pest control

Call Phil on 07722 158 111

Email Oliviagarrett79@gmail.com



YOUR LOCAL FARM SHOP
ON DENBIES WINE ESTATE

farm shop deli plant centre

Open daily 9.30 am to 5.30 pm and Sundays 10 am to 5 pm

Local Produce, Seasonal Food, Plants and Flowers

Surrey Asparagus – Sussex Tomatoes!

See our website for Summer Floristry Workshops

We deliver veg bags and more to the local area on Fridays

see www.vgfarmshop.com or email vegbag@vgfarmshop.com for details

LOCAL • NATURAL • ETHICAL 01306 880720 www.vgfarmshop.com

Victory in Europe Eighty Years On

Victory in Europe (VE) Day was the long awaited day that marked the end of six shattering years of World War II and the beginning of peace and a gradual return to normal living, with reunited families rebuilding their lives and getting back on their feet. There were great celebrations on 8th May 1945 in London where thousands of people thronged to rejoice in the hard-fought victory. The King and Queen acknowledged the cheering crowds from the balcony of Buckingham Palace and the two princesses were allowed to go down into the Mall and join in the festivities.

Thus began an article* in the parish magazine published in the celebration of the 50th anniversary of the end of the war in Europe in 1945. This year, on 8th May we will celebrate the 80th anniversary.

In 1995 we collected memories of the ways in which local residents had celebrated. Many of them were in far flung places and had vivid memories. **Brian Whinney** (of Westhumble) was 'somewhere on the Rangoon River' on board HMS Waveney when they received a General Fleet Signal announcing the end of the War and issuing that most popular command: **SPLICE THE MAINBRACE!** **Ken Kilburn** was in China. For him there were celebrations, but the Japanese war had several months to run and work had to continue. Others also reported that they joined in celebrations but work had to continue: **Noeline Aarvold** told us 'I fear my recollections will disappoint all who read them, for readers will surely expect to learn of celebrations and festivities. I saw none that day as my commitments kept me in Dorking with Civil Defence colleagues at Pippbrook and at home with the evacuees.'

Others were able to join celebrations with gusto. **Peter Curran** was one of the thousands cheering outside Buckingham Palace. As a Boy Scout of 14, he recalled having manned a stirrup pump and helped in the installation of air-raid shelters at people's homes during the war. **Janet Curran** had vivid memories of her father uncharacteristically dancing

to *Knees up Mother Brown* at their street party in Banstead. In later life the Currans lived in Camilla Drive.

Joyce Cross had fond memories of the party which was held shortly after VE Day at the pub. Many of the villagers went in fancy dress - her father was dressed as a lady and her brother as a nurse holding a baby, whilst she dressed up as a little old lady. Harold and Stan Miles went as a bride and groom with the 'bride' carrying a bouquet of cow parsley and buttercups (and causing a bit of a stir when 'she' went to the Ladies!). Joyce remembers that the evening was full of fun and laughter and they all dressed up again a few days afterwards to have a formal photograph taken (this time with 'proper' flowers for the bride!). This photograph still hangs in *The William IV* in memory of how Mickleham marked the end of World War II.

This year, 80 years down the track, only those of advanced years were born before VE Day and have clear memories of celebrations (or lack of them). **Bernard Salsbury** remembers 'I was some three months before my 10th birthday, and the only real memory for me was seeing many large bonfires built in the roads around where I lived in Goodmayes, Essex. I was rather disappointed, because my mother gave me and my siblings a large potato each to roast in the bonfire nearest our house. These were placed by a guy in charge. I was convinced that the roasted potato I received back was considerably smaller than the one I gave the guy!'

Frances Presley, at a boarding school in Shropshire at a very tender age, told us 'in May 1945 came the end of the war and we were told that, on 8th May, there would be a fancy dress party for everyone and we could choose what to wear. By the time I got to the head of the queue for costumes all that was left was a thick tweed skirt which came down to my ankles and a heavy orange jumper. It happened to be a very, very hot spring day and I was absolutely boiling, so I took off the jumper and ran



The fancy dress wedding at the King Willy.

around in my vest and liberty bodice - who remembers those? I was then sent straight up to my dormitory and, sadly, I missed the tea which had been promised - with ice cream.'

Jennifer Louis wrote: 'Thank you so much for sending me down Memory Lane re 8th May 1945. Wondering why I had no memory of a street party then, I turned to my old schoolbook of our writings of the time and found my reason for not remembering. When the end of the war was announced, Pauline was in the gym for the official announcement but as the first girl allowed to bring a portable radio to school, she had heard the news earlier in the day. In her excitement, she had run down the main staircase shouting, 'The war is over!' only to be met by Miss Ford, who told her off for running. There was a choice as to how the school should celebrate, either an immediate day off or an extra day tacked on to the next holiday. An immediate day was decided. We had a holiday from lessons and nobody quite knew what to do with no organised activity. There was no sign of any change. We had no knowledge of what was going on in London, just two hours away.'

Many others had very hazy or non-existent memories of the day or any celebrations. They were often away at school and could not go home for a day. **Elizabeth Moughton's** school was evacuated to Dunblane in Scotland and she had no recollection of celebrations, nor did **Ben Tatham** also away at school.

Though we may have no memories or were not born until after VE Day we will all celebrate the event with the special church service and the picnic in the Rectory garden with gratitude to all those who gave so much in World War II.

* You can see the full article in the May 2020 issue of this magazine on the Mickleham Parish Council website.

Where Will Looked Quite Smart



Above left: canoeing; right: a clock tower

I'm always a bit chary about those magazine articles where people rave about their recent holidays. So when someone suggested I write about our recent holiday in New Zealand, I was cautious. But on reflection here goes. Anyone not wanting to know about New Zealand turn the page now.

We went only because of an invitation from a university friend, a commercial lawyer who, never having married or had children, has amassed a fair-sized fortune. Some of this he has spent on buying a house in New Zealand where he keeps one of his three private planes, as one does. It's on an airstrip, with the living quarters upstairs and the plane downstairs!

We spent a few days with Luigi (a nickname bestowed upon on him at university in 1971 which, for some reason, his current girlfriend found so funny that she has taken it up, much to his discomfort) which included some fantastic flying - Annie and I both got to be passengers in formation-flying planes! Then we set off in rental cars across the North and then the South Island with another uni friend and his wife. It was a geriatric tour - the combined age of the four of us was 285! There is beautiful scenery: fabulous mountains, lakes and beaches. Very clean, no rubbish anywhere. Fascinating flora and fauna, not that you see much of the latter. Plenty of opportunities to do sport, eg hiking, mountain biking, kayaking, bungee jumping. We did the first three, but avoided the last!

Largely empty roads, just as well, as there

are no motorways, it's all two-lane blacktop. The speed limit is 100 kph, 62mph. If you do less than 60 mph you will have a trail of traffic queuing up approximately three inches from your back bumper. Unlike in France however, they wait for you to pull over before overtaking, and not on blind bends.

Men wear T-shirts and shorts all the time. It's the only country ever where I have looked quite smart. However they all sport tattoos, which I do not.

There is a national obsession with sport, particularly water sports and, of course, rugby. Surprisingly, given this obsession with sport, at least as high a proportion of the population as in the UK appears to be obese.

New Zealanders are a friendly and welcoming people. They do not have a huge work ethic. Work is seen as something that is done sufficiently to enable one to get on with the important things in life, ie sport. All the work, in the tourism industry at least, appears to be done by Chinese and Indian immigrants, or Europeans on short-term working visas.

Māori culture is worshipped by everyone, with the white New Zealanders beating themselves up continuously for having been horrid to the Māori in the past. I was told that the Māori ate the people who were here when they landed, but,



Above: Sculpture

when I asked a museum curator if this was indeed the case, I was given a bit of an old-fashioned look. Apparently only Māori commentators can address this topic.

Not a lot of culture otherwise - several opera houses but no operas, but there is a thriving fringe theatre. We saw two good productions, one a musical based on the premise that Antonio (the Shakespearean character in The Merchant of Venice and Twelfth Night) was gay; the other a one-man show about a grumpy old MAMIL. Annie said he was just like me. The grumpy MAMIL that is, not the gay Shakespearean.

Food is unexciting. Do not come here for haute cuisine. Standard restaurant menu is steak and burgers. Coffee shops are everywhere however, also selling loads of imaginative smoothies. Wine is good, but overpriced compared to France, Italy or Australia.

In short, while we unquestionably had a good time, it's hard to see quite what the hype is about. Many of our friends have raved about New Zealand. We are glad we came, but we would not come here again. Our bucket list still has two countries left that border the Med, one of which, Albania, is booked in for June.

Will Dennis

Below left: flying; right: dancers



Choir Success at Music Festival

What a day and what a remarkable success it was for Mickleham Choral Society at the Leith Hill Music Festival. MCS has performed at this nationally acclaimed festival in Dorking for over 100 years and probably with an accompanying article in this magazine each time.

Although the format has changed slightly over the years, particularly post Covid, the day starts with a hotly contested competition between local choirs adjudicated by a highly respected judge. Each choir performs three pieces of their choice from specific categories on the stage of Dorking Halls. The afternoon is then taken up by rehearsal for a major choral work. The choirs that were competing in the morning combine to make one powerful choir of over 200 voices plus orchestra and soloists to create a concert open to the public in the evening.

Last Friday (11/04/25) Mickleham competed against the choirs of Beare Green and Newdigate, Bookham, Buckland and Betchworth, Horsley and Holmbury St Mary with great success. Mickleham were second to Horsley in

all choir categories and awarded the Widenham Fosbury Silver Hen (yes, really) prize for second place for the entire competition. In the ensemble section (up to twelve singers) our Upper Voice ensemble came a very close second to Horsley and the Lower voice ensemble won the ridiculously large Arthur Lawrence Cup with the highest score for the competition across all categories.

The evening concert was a spirited and electrifying performance of Will Todd's Missa Brevis and then Passion Music with The Will Todd Ensemble and the captivating soloist Shaneeka Simon. Conductor and LHMFC Music Director Neil Ferris inspired and cajoled the Surrey choirs to create the most passionate, jazz inspired music that fired an incredible response from the sell-out audience.

Our warmest thanks go to our pianist Judith Flint and Musical Director Juliet Hornby for inspiring and steering us to achieve such a high standard. It was a remarkable day which of course had to be celebrated at the 'after gig party' at the Running Horses. And yes, we did



sing an encore in the pub. If you would like to hear our performances visit our website www.micklehamchoral.org.uk.

And now for something different! Our Summer Concert on 21st June is a performance of "Captain Noah and his Floating Zoo" with the Pete Billington Trio, a show for all the family followed by "Let's Party" where we all let our hair down and dance. The show will be in the grounds of Mickleham Village Hall so bring a picnic from 5.30pm and the performance starts at 6.30pm. For tickets go to www.micklehamchoral.org.uk. It will be great fun.

Phil Randles

MICKLEHAM CHORAL SOCIETY'S SUMMER CONCERT Captain Noah and his Floating Zoo

With the Pete Billington Trio and soloist Christopher Burrows

A performance following the Old Testament story of how God instructs

Noah to build the ark and fill it with animals.

Followed by **Let's Party** where we all let our hair down and dance.

Saturday 21st June
Mickleham Village Hall grounds

Picnics & bar from 5.30 pm - performance 6.30 pm

Tickets: adults £15 / children 6-12 £7.50 / 5-and-under free

Booking via Events page on: www.micklehamchoral.org.uk



A Confidential & Safe Space to Talk

Counselling • Mind & Body Healing
Reiki • Relax into Nature Sessions
Face to face/Online/Outdoors/Distance

Supporting you with compassion and
understanding through challenging times



Call Judith Cobby
on 01306 882229
or 07790 614448

www.healing-inspiration.co.uk

TIM LANGLEY

Experienced craftsman

RESTORATION & REPAIRS OF
ANTIQUE & MODERN FURNITURE
FRENCH POLISHING & RE-FINISHING
GENERAL REPAIRS

Free estimates

01372 457700 07960 486455

tmlangley@virginmedia.com

Building Plans

For home improvements & extensions

Including planning & building regulations

Fast efficient service at competitive rates

MICHAEL LLOYD CEng MICE

For free consultation:

Phone: 01483 205479 or 07958 791 402

mfl_uk@yahoo.co.uk

DORI VANA PLUMBING

Bathroom renovations and
all plumbing services

07977 220465 / 01306 887282

dvanaplumbing@gmail.com



RGS

EST.1985

**Gardens large and small
we maintain them all**

All aspects of private and commercial garden
and estate maintenance landscaping undertaken
Fencing, grass & hedge cutting

Telephone: 01737 841524 Mobile: 07887 838666

References available upon request

PAINTING DECORATING

ANDREW CLARK 07800 796 737

INTERIOR & EXTERIOR • CARPENTRY • HANDYMAN
WORKING LOCALLY 20+ YEARS RELIABLE PROFESSIONAL RECOMMENDABLE



KING WILLIAM IV

Dear friends & neighbours,

Fantastic sunny weather, which has been great for bringing so many of you out to see us.

Remember we will be open on both May Bank Holiday Mondays. To avoid disappointment on

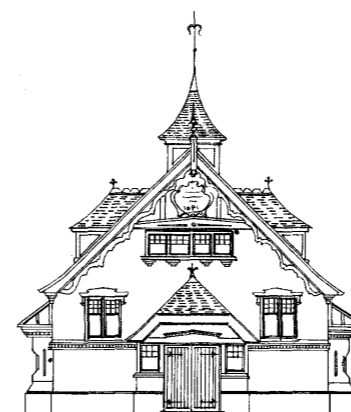
busy sunny days, please book via our website to ensure a table. Also do not forget the fantastic Charity Quiz on Thursday 19th June in the evening.

We have casual and weekend shifts are available from early May, so if you know anyone suitable please suggest they contact us.

Hope to see you soon.

Eamonn&Kat

Byttom Hill Mickleham 01372 372590 www.thekingwilliamiv.com



Mickleham Village Hall available for hire

Hall bookings
Table & chair hire

Deanna Darnell

07790 941 601

bookings@micklehamvh.co.uk

www.micklehamvillagehall.org.uk



Planning
a party?

Equipment
available for hire

China ~ Cutlery

Electric urn

Equipment hire

Mary Banfield

01372 373912

admin@micklehamvh.co.uk

Community Directory

BOX HILL AND HEADLEY HEATH (National Trust) 01306 888793

Lead Ranger – Meredith Westall (Merry) meredith.westall@nationaltrust.org.uk

07811 088097

Friends of Box Hill – Chair Lyn Richards 01737 842889

lyn@mra.uk.net

BOX HILL SCHOOL

Headmistress – Hayley Robinson

01372 374814

reception@boxhillschool.com

DORKING CRICKET CLUB

Chairman – Andrew Homewood

homewooda@hotmail.co.uk

DORKING GROUP OF ARTISTS

Exhibition Secretary – Patricia Booth

patricia booth100@gmail.com

DORKING LAWN TENNIS & SQUASH CLUB

Maddy Halliwell

madeline_halliwell@hotmail.co.uk

DORKING RUGBY CLUB

Jim Evans

07789 176417

jim@flintcottage.net

THE GARDEN SHED

Pauline Davis

07759 646353

paulinedavis33@icloud.com

JUNIPER HALL FIELD CENTRE

01306 734501

enquiries.jh@field-studies-council.org

Head of Centre – Sarah Wyper

s.wyper@field-studies-council.org

Friends of Juniper Hall

friendsofjuniperhall.org

friendsofjuniperhall@gmail.com

MICKLEHAM CHILDREN'S PLAYGROUND ASSOCIATION

Secretary – Sarah Parfitt

07767 891772

sarah@sarahparfitt.com

MICKLEHAM CHORAL SOCIETY

www.micklehamchoral.org.uk

THURSDAYS 8 - 10 pm – MICKLEHAM VILLAGE HALL

Conductor – Juliet Hornby

01372 373106

Secretary – Mike Benson

secretary@micklehamchoral.org.uk

MICKLEHAM OLD BOX HILLIANS FOOTBALL CLUB

Secretary – John Atewell

01372 374745

MICKLEHAM PARISH COUNCIL

SEE WEBSITE FOR MEETING DATES

www.micklehamparishcouncil.gov.uk

Chairman – Rev'd David Ireland

01372 379381

rev.ireland43@btinternet.com

Parish Clerk – Feena Graham

clerkatmpc@gmail.com

MICKLEHAM PARISH MAGAZINE

Co-Editor – Charlotte Daruwalla

07933 300744

editor@micklehammag.co.uk

Co-Editor – Jan Budleigh

07780 976301

editor@micklehammag.co.uk

MICKLEHAM VILLAGE HALL

Chairman – David Kennington

01372 362309

davidkennington144@gmail.com

Bookings Manager – Deanna Darnell

07790 941601

bookings@micklehamvh.co.uk

ST MICHAEL'S CHURCH

*within the United Benefice
of Leatherhead and Mickleham*

INCUMBENT — The Rev'd Will Perry 01372 372313

PARISH PRIEST

The Rev'd Dr Sandra Faccini * 01372 417664
07763 488961
parishpriest@mickleham.church
* Main working days: Monday, Tuesday and Sunday

CHURCHWARDENS

Lucy Adshead 07773 294026
cw@mickleham.church

John Banfield 07831 606493
acw@mickleham.church

PARISH SAFEGUARDING OFFICER

Vickie Leney 01306 884054
safeguarding@micklehamchurch.org.uk

PARISH ADMINISTRATOR

Alison Wood 01372 376443
admsupport@mickleham.church

PCC SECRETARY

Caroline Jones 07504 271376
pccsecretary@mickleham.church

TREASURER

Richard Siberry 01372 375303
pcc treasurer@micklehamchurch.org.uk

ORGANIST

David Fishwick 0208 7732420
davidfishwick1@btinternet.com

WEDDINGS CO-ORDINATOR

Elaine Machin 01372 724972
weddings@micklehamchurch.org.uk

BAPTISMS CO-ORDINATOR

Vickie Leney 01306 884054
baptisms@mickleham.church

FUNERALS CO-ORDINATOR

Carole Brough Fuller 01737 842918
funerals@mickleham.church

AUDIOVISUAL

Kelvin Pritchard 07770 280410
av@mickleham.church

PCC ECO GROUP

David Kennington 01372 362309
davidkennington144@gmail.com

WEBSITE MANAGER

Cassandra Charles Bagott info@mickleham.church

www.micklehamchurch.org.uk

*For information about services for other denominations
see website pages.*

Search on 'Churches Together Mole Valley'

REGISTERS

FUNERAL

Monday 7th April Elizabeth (Betty) Mackie

CALENDAR

MAY

| | | | |
|--|--------------------------------|---------------------------|--|
| 3 | Saturday | 10 am to noon | Coffee morning at Westhumble Chapel p3 |
| 4 | Third SUNDAY of Easter | 10 am | VE Day Worship for All Service p3 Picnic in Rectory Garden p3 |
| 6 | Tuesday | 7 pm 7.30 pm | Compline in church Garden Shed talk at Stepping Stones pub p11 |
| 11 | Fourth SUNDAY of Easter | 8 am 10 am | BCP Holy Communion at Westhumble Chapel Holy Communion |
| <i>Copy deadline for June magazine</i> | | | |
| 13 | Tuesday | 7 pm | Compline in church |
| 17 | Saturday | 9 - 10 am 10 am | Women's Breakfast at The Stepping Stones p2 Mickleham Village Hall AGM p17 |
| 18 | Fifth SUNDAY of Easter | 10 am | Family Holy Communion |
| 19 | Monday | 3 pm | Tea@3 at Brockham p 3 |
| 24 | Saturday | 9 - 10 am | Men's Breakfast at the Stepping Stones p2 |
| 25 | Sixth SUNDAY of Easter | 8 am 10 am 3 - 5 pm | BCP Holy Communion at Westhumble Chapel Holy Communion Tea and cake at the church p2 |
| 29 | Thursday | 1.30 pm | M&WLHG Guided tour of Gatton Park p18 |

Dates for your diary

| | |
|--------------------------------|--|
| Sunday 8 th June | Confirmation Service with the Bishop of Dorking (at St Michael's) |
| Monday 9 th June | Mothers and Toddler Group p 2 |
| Saturday 21 st June | MCS Summer Concert p11 |
| Thursday 19 th June | Pub Quiz in aid of playground and St Michael's School p17 |

The list on the left includes new email addresses for the churchwardens and other posts in the church team.

In addition, the contact page Enquiry form is now active on the new church website, **www.mickleham.church** – if you hover over the first item on the menu **About Us** and select **Contact Form**, and fill in the details, your message will be directed to the person most suited to reply.

The church calendar is also live with details of all the services and events for each month. Do have a look and familiarise yourself with the new layout and the extra information available at the click of a mouse!

MEMBERS OF THE PAROCHIAL CHURCH COUNCIL

| | |
|------------------|------------------|
| Andy Diamond | Elaine Machin |
| Catherine Diffey | Tim Mathieson |
| Caroline Jones | Beverley Mehta |
| Vickie Leney | Richard Siberry |
| Susan McGrath | Amanda Wadsworth |
| Paddy MacVean | |

ST MICHAEL'S CHURCH COMMUNITY GROUP COMMITTEE

| | |
|------------------|---|
| Mark Day | 07852 117249 mickleham@hotmail.com |
| Denise Darling | denisedarling4@btinternet.com 07780 673372 |
| Andy Diamond | 07789 775354 adiamond714@gmail.com |
| Kelvin Pritchard | 07770 280410 Kelvin@wan2lan.com |

ST MICHAEL'S CHURCH COMMUNITY GROUP HELPING HANDS INCLUDING FOOD FOR FRIENDS

A service for all residents of Mickleham and Westhumble

Examples of services we offer:

- Essential shopping/collection of prescriptions
- Changing library books
- Small tasks: eg changing fuses, altering clocks etc
- Dog walking
- Visiting/befriending
- Home-cooked meals for local families going through difficult times

Requests to:

Will Dennis 07903 842674 **wdwdennis@icloud.com**
(who can put requests onto WhatsApp)
Mary Banfield 01372 373912 **mgbbmw@aol.com**
Frances Presley 01306 882473 **jasempres@gmail.com**

*More helpers needed – please contact
Frances if you can spare some time.*

Tools With a Mission

List of acceptable donations at **www.twam.co.uk**
Including agricultural, carpentry, and mechanic's tools,
sewing machines, haberdashery and IT equipment.
Contact local authorised collector, Hilda Burden of Brockham
to discuss donations or arrangements for collection.

info@hildburden.co.uk

Community Directory

Continued from page 13

MICKLEHAM & WESTHUMBLE BADMINTON CLUB
Membership Secretary – Sarah Pritchard tinkerbell0044@hotmail.com

MICKLEHAM CRICKET CLUB
Membership contact – Will Dennis 07903 842674
will@micklehamhallfarm.co.uk

MICKLEHAM & WESTHUMBLE HORTICULTURAL SOCIETY
Chairman – David Kennington 01372 362309
www.surreycommunity.info/mwhs or davidkennington144@gmail.com

MICKLEHAM AND WESTHUMBLE LOCAL HISTORY GROUP
Chairman – Ben Tatham 01306 882547
ben@thetatham.co.uk or www.micklehamwesthumblehistory.co.uk

MOLE VALLEY DISTRICT COUNCIL 01306 885001
Cllr Chris Budleigh 07801 520059
councillor.budleigh@molevalley.gov.uk

Cllr Abhiram Magesh 07765 126399
councillor.magesh@molevalley.gov.uk
Cllr Leah Mursaleen-Plank 07803 353352
councillor.mursaleen-plank@molevalley.gov.uk

THE ARTS SOCIETIES (FORMERLY NADFAS)
Betchworth – Mary Venning 01306 883301
Dorking – Sue Tatham 01306 882547
Leatherhead – Beverley Mehta 01372 374304

ST MICHAEL'S CHURCH OF ENGLAND (A) INFANT SCHOOL 01372 373717
info@stmichaels-dorking.surrey.sch.uk
Friends of St Michael's School – friendsofstmichaels2017@gmail.com

ST MICHAEL'S COMMUNITY NURSERY
WEEKDAY MORNINGS – MICKLEHAM VILLAGE HALL
Supervisor – Hilary Budd 01372 361021
stmichaelsnursery@btinternet.com

SURREY COUNTY COUNCIL 03456 009 009
Councillor – Hazel Watson 01306 880120
hva.watson@btinternet.com

SURREY WILDLIFE TRUST 01483 795440
info@surreywt.org.uk

TREE WARDEN
David Kennington 07546 952521
davidkennington144@gmail.com

WESTHUMBLE NEIGHBOURHOOD WATCH
Lead Co-ordinator – David Allbeury 07860 227451
westhumble.neighbourhood.watch@gmail.com

WHATSAPP GROUP
Neil MacKay nlpm@lineone.net

ADDITIONAL CONTACT INFORMATION
CITIZENS ADVICE
Dorking – Lyons Court 01306 732302
Leatherhead – Swan Mews High Street 01306 732301
CRIMESTOPPERS 0800 555 111
POLICE Non-emergencies 101

(often quicker to make online report) <https://report.police.uk/>

Neighbourhood Specialist Team – Dorking Rural East
General enquiries molevalley@surrey.pnn.police.uk

NHS Urgent and emergency care 111

Babysitting by local youngsters

Those listed below are at least
14 years old.

Gracie Owen **07790 900649
Eva Lanceley **07903 630567
Ella Parfitt 07746 882175
Bea Moore *07444 557958
Farah Patel 07757807246

* Parent's mobile number

We have recently lost many of our sitters as they move on to higher education or work-life. We wish the best of luck to all of them.

Now is an ideal time to join the list if you were thinking about it. There are fewer people listed so the possibility of more bookings.

If you would like to add your name to this list please get in touch with

editor@micklehammag.co.uk
No Charge

Advertising in the Parish Magazine

Please contact
ads@micklehammag.co.uk
Small ads: a nominal fee is charged for ads where items or services are bought or sold.

We have been advised to print the following reminder:
We cannot guarantee the quality of the goods and services offered by our advertisers.

We are very grateful to all our advertisers, who make the production and distribution of this magazine possible.



Rainfall, Barbecues and Bonfires

Ben Tatham sent a message as follows: 'I empty my rain gauge every Saturday morning. In the six weeks to 12 April, we have had just 5 mm of rain. The average for that period is about 60 mm.'

Ben also said that total rainfall since the start of the year was about 180 mm. The result by early March was plenty of mud on all the local footpaths. Now they are hard as iron with cracks developing. Who knows how the weather go from here. Will it continue to surprise us?

Sue Tatham wrote last month about the fires on Box Hill, one at least believed to have been started by a barbecue. We need to remember the pictures of destructive wildfires in residential areas on west coast USA last year. Current conditions make it essential that great care is taken with fire risks such as barbecues and bonfires. Mole Valley District Council's website includes the following:

Bonfires, Smoke Nuisance and Fireworks
There are no laws against having a bonfire, but there are laws to deal with the nuisance they can cause and there are also restrictions on what you are allowed to burn.

It is an offence to cause a statutory nuisance from regular bonfires, you could be fined up to £5000.

We encourage all residents to be considerate of their local communities and the environment by not having bonfires and using clean fuel for domestic heating.

What's wrong with a bonfire?

- *It can cause a nuisance to neighbours, each year we deal with over 100 complaints about garden bonfires*
- *Fires can spread from garden bonfires to fences, trees and property*
- *Garden bonfires create dioxins and other toxic pollutants*
- *Smoke and smells from bonfires can aggravate respiratory problems such as asthma and bronchitis and affect those with heart complaints*
- *Bonfires produce carbon dioxide, a major contributor to global warming*
- *Animals often take shelter in piles of garden waste, such as prepared bonfires*

The National Trust bans barbecues on Box Hill (and on its other properties) to protect wildlife habitats and reduce the risk of wildfires. One of the fires on Box Hill is reported to have damaged the habitat of rare butterflies.

April Fools

Sincere congratulations and thanks to the writers of our two April Fool articles. Both offerings we received were so convincing that we decided to publish both of them.

Admit it, you did think both were true, if only for a moment until you remembered the date. If you missed them, check again on pages five and 21 of the April issue. You will be sorely disappointed when the cooler autumn weather arrives and in church you find your posterior is not kept warm by Ralf Polio's heated pew cushions. You may already have been turned down as a guinea pig for the Box Hill zip wire proposed by Fay Kerr.

Some people have a vivid imagination. On second thoughts, one or two WhatsApp correspondents have suggested a zip wire is not such a daft idea...

Community News

Welcome to Becca and Lance Bevan and their sons Zak and Theo who have moved to Mickleham recently.



We have been informed that Derek Bailey, a resident of Dell close since 1976 sadly died on 9th April aged 97. He will be sadly missed by neighbours and friends.



Garden Shed
Flower Arranging
Demonstration
see page 28


Festival

The Stepping Stones is hosting this event on 28th June. Put the date in your diary.
More details next month.

Charity Quiz Night

In aid of Mickleham Playground & Friends of St Michael's School



Raffle on the night too!

THURSDAY 19 JUNE 2025
7.30pm to 10.00pm
KING WILLIAM IV PUB

Quiz Tickets £12 per person
Teams 4-6

TICKETS AVAILABLE IN ADVANCE ONLY BY EMAILING:
micklehamplayground@gmail.com



Mickleham Village Hall AGM

Saturday
17th May
10 am
in the hall
All welcome



Joe's Buddy Line Charity in 2024

An Update

We are extremely grateful for all the support given to Joe's Buddy Line Charity (JBLC) and pleased to provide a very positive update of our Registered Charity's activities in 2024.

Over the past four years, the charity, as many will know, set up in loving memory and as a legacy to our son Joseph Lyons, has achieved a great deal but only possible with the magnificent support of many individuals and organisations including valuable help from Mickleham parish church community. The charity has now assisted about 25 schools in Surrey, London, the Home Counties and one very persistent school in the Midlands with their mental health issues and concerns. There has been much more activity than was initially anticipated or considered possible. Other educational settings within the Home Counties and elsewhere are on a waiting list asking for our support and, as unfortunately there is not a 'one stop solution' to simply help every institution, we are trying very hard to provide appropriate assistance with their specific mental health problems as soon as we can with additional resources.

Some of Joe's Buddy Line Charity

Awards, Achievements and Activities in 2024 include:

* Winners of the BBC (Surrey and Sussex) 'Make a Difference' Community Award 2024.

* Joe's Buddy Line Charity was praised within a recent Parliamentary debate about mental health support in schools and our continuing efforts for a Statutory Mental Health Policy requirement for all educational settings.

* The Television and Radio Industry Club (TRIC) Charity of the Year 2024.

* Global 'Make Some Noise' Charity 2024.

* Working with Disney Corporation to produce a 30 minute Mental Health film to be shown in Secondary School Assemblies and supporting their HERE4YOU event over the next few years.

* Created a new Buddy Room (or Calm Space) concept, with very positive feedback providing facilities within a safe and supportive school room where students can obtain more appropriate and responsive mental health and wellbeing help when required.

* Publication of our JBLC Buddies Talk Book for students, parents and

guardians with information in a more student friendly 'visual synopsis' form, to help concerns moving from a primary to secondary school. The first of a series of age related books to assist students with various mental health and wellbeing issues and concerns.

* Starting to help local Student Hubs that work with students who require additional mental health support after school and during holiday periods.

* Continuing to offer schools our well received initiatives including the Buddy Board, Buddy Box, Buddy Bench, CPD and other workshops for students, teachers and parents, and specially designed 'visual synopsis' Buddy leaflets, some framed, about mental health and wellbeing issues for all within a school community.

* As our expansion continues, the charity has obtained extra help during the year by appointing a dedicated school coordinator and three additional trustees.

As can be seen, a lot of work has been going on over 2024 but, with demand so great for our assistance, there is much more for our Joe's Buddy Line Charity still to do.

Ivan, Celia and Louisa Lyons

23-29th June 2025 Chalke History Festival

Grappling with the Past to Understand the Future

Frances Presley attended the Chalke History Festival in 2024 and wrote about it in this magazine. Her report sparked an interest in our readers so she has provided information for anyone who might be interested this year.

The 2025 Chalke History Festival will take place at Church Bottom, Broad Chalke, Salisbury, Wiltshire, SP5 5DP. For more details about the festival, please visit our website at www.chalkefestival.com Follow all the

news on X at @ChalkeFestival, on Instagram at @chalkehistoryfestival and on Facebook.

VIPs expected to attend include Ben Macintyre, Kate Summerscale and Max Hastings.

Box Hill and Westhumble Station 'the Prettiest'

The station at Westhumble has been voted the prettiest in Surrey. The Dorking Advertiser curated a list of 11 stations across the county and asked readers to choose their favourite. The runner up was Godalming.

Over the years the magazine has recorded stories about the history of the station - the days when the station staff would phone commuters to tell them their train was cancelled, or running late.

It is such an attractive building, described in Pevsner's Surrey in the Buildings of England series as 'A delightful, rather ecclesiastical little building. Porch at the side with elaborate Gothic columns; turret with weathervane.' We are assured by the residents that the fourteen inch thick, solid walls mean the trains are not an issue and they are completely unaware of

whether the one due has been through or not when asked. The family evidently like the house very much as they have lived there many years.

It had also been listed in the *Daily Telegraph* as the starting point for one of this country's best walks over Box Hill and surrounding countryside.

In addition to appealing to local residents, the monthly coffee mornings at the Westhumble chapel are becoming popular with walkers and cyclists passing by as they start weekend walks with delicious cake and coffee. It is lovely to see them in ones and twos, obviously enjoying the beautiful surroundings with which we are blessed.



However, on Saturday 5th April, after the *Telegraph* had listed the area as a 'best walk' the local consumers of coffee and cake were taken aback to see an ever increasing 'snake' of walkers hiking from the station up Chapel Lane towards Polesden Lacey. There must have been about 200 of them. There were sighs of relief when they passed by as we would quickly have run out of cups, tea and coffee and cake.

Charlotte Daruwalla

Mistletoe and Lime near Lodge Farm

Further to the article in last month's magazine about mistletoe, there is an unusual lime tree heavily clothed in this hemiparasite near Lodge Farm where Judy Kinloch used to live. Crossing the Mole beyond Cowslip Farm, if one takes the track running behind Lodge Farm and continues up to the picnic tables just below Norbury Park woodland, there is a very tall lime tree on one's left.

The lower, profusely branched, quarter of the tree looks much like any other lime tree. However, above this, the trunk, sparsely branched, soars upwards and is heavily covered in mistletoe. The height, as measured by Graham Revill and I, is in the order of 115ft or 35m,

while its girth is 13ft 10in or 4.22m. The British record is 46m near Inverness and 10m in Bifrons Park near Canterbury. All the record girths are for trees with multiple trunks. Our tree has a while to go yet both for height and girth.

I understand that there used to be a line of fine limes along the track from Judy's cottage to the picnic area but they came down in the 1987 Great Storm. Apparently, this corner of the parish was particularly hard hit by that storm and Judy was as devastated as her surroundings were. There are plans to replant a row of lime trees along the track, in her memory. That would be a fine memorial to her. Barbara Jones



M&WLHG Guided Tour of Gatton Park

1.30 pm Thursday 29th May

Join us on the tour to hear about the history of the rock garden, Japanese garden, 'Capability' Brown parkland, 'town hall', St Andrew's Church and Gatton Hall, as well as the restoration of the Old World Rose Garden.

£12 per person, which includes tea, coffee and cake in the magnificent Gatton Hall.

For further information or to book a place, please contact Judith Long:

judith.long2@btinternet.com or 07904 160961

Solution to Easter April Strand

| | | | | | |
|---|---|---|---|---|---|
| E | N | Y | B | A | K |
| C | N | U | C | N | E |
| V | I | E | O | T | A |
| M | R | H | S | C | P |
| A | O | N | N | U | R |
| Y | D | K | S | B | O |
| E | E | G | C | S | C |
| L | G | N | T | I | H |

EGG

CHICK

BUNNY

PANCAKE

SERVICE

MONDAY

LENT LENT

HOTCROSSBUN

CARPET REVIVAL REVIVING CARPETS & UPHOLSTERY IN SURREY

We clean to a professional standard using eco-friendly chemicals and the latest equipment.

Offering a thorough survey, clean and customer satisfaction. Certified and insured.

Call 01306 740035 / 07747 122128
or visit www.carpetrevival.co.uk
to book a free home visit/quotation

Quote Code
'CR110'
and save 10%
off your booking

Vivien Cresswell Made-to-measure Soft Furnishings

Curtains Roman Blinds Cushions



Extensive range
of fabrics

01737 843858

info@cresswellcurtains.co.uk
www.vivienecresswell.co.uk

Domestic Appliance Repairs

30 years' experience repairing and installing all gas and electric domestic appliances



- Cookers, Microwaves
- Dishwashers
- Washing machines
- Fridges / Freezers
- Water coolers
- Coffee machines
- Tumble dryers

Contact: Andy 07895 719 706
andy@kirksdomestics.co.uk



STEVE LAWRENCE

BOILERS & HEATING

Boiler installation, maintenance and repair

Based in Mickleham Local references

30+ years' experience

07760 266718



Joseph

De Decorators

- Painting • Decorating • Wallpapering
- Plastering • Tiling

Mickleham based 40 years' experience
01372 372331 07973 358 932

Phil's Mowing Dorking

Regular Lawn Mowing
General Garden Maintenance
Lawn Care & turfing
Hedge Trimming
Pressure Washing



phil@philsmowingdorking.co.uk

07905 160 765

Morning Star Cottage

Restronguet, Cornwall

Escape to a tranquil hideaway at water's-edge
with stunning creek views

Very comfortable former fisherman's cottage

Fully refurbished, centrally heated and with super fast broadband

- Sleeps 6, dogs welcome • wood burner • 2 bathrooms (1 en-suite)
- Private jetty and mooring
- Hire a boat/kayaks/paddle boards from the cottage
- 5 minutes' walk to the 13th century Pandora Inn

Contact Sarah Penry for more information: sarahpenry@hotmail.com 07902 758070
<http://www.cornishholidaycottages.com/property/morning-star/>



Mickleham Parish Council March 2025 – Report

At the meeting on Wednesday 12th March Mickleham Parish Council discussed a range of issues. The meeting was attended by five of the seven councillors and they were joined for the open forum by local resident Maggie Lamberth and Troy Cox, the business owner of Rykas Cafe.

Troy spoke of his pride at improving the facilities of Rykas and of his efforts to maintain a good relationship with the local community. He acknowledged that there were fringe elements of the users whose behaviour is antisocial but spoke of his team's efforts to manage the challenges they can present. Troy is clearly keen to work alongside local neighbours and has provided contact details should there be a need to call for assistance if clients fail to show respect to the community which surrounds Rykas.

Maggie Lamberth raised the issue of the substantial rise in the Parish Council element of the council tax. The Chair explained that this was in large part due to a need to move our website and email addresses to a Gov.UK site to improve security and communication. In addition, a sum had also been added

to enable the Parish Council to support the playground and a community event such as a fête.

A report was received from the Norbury Park forum meeting and it was noted that support was given from the community to enable Mark Frost to provide fencing around his grazing herd, in an attempt to address the issues caused by the spread of *Neospora* which may be passed onto the cattle by dogs fouling in the area.

The results of the local housing needs survey are not yet available, but it was noted that there had been an encouraging above-average response from local residents. It was hoped to give a full report of the findings at the main meeting of the Parish Council. A number of planning applications were noted and councillors' concerns and support were noted.

The community speed watch team reported the encouraging news that they had two new members of the team. Two speed watch sessions, one on a weekday and the other at the weekend had recorded no motorists exceeding the new speed limits.

The Garden Shed The Magic of Houseplants

Sarah Foss gave a very interesting talk to The Garden Shed on the Magic of Houseplants.

Firstly, history. It was the Victorians' obsession with plants that popularised using them in the home though there is evidence that the Romans and Greeks kept potted plants. Sarah asked us what benefits there are to keeping one in the home. In reply to her own question she listed 14 reasons. These included providing food, example chilli plants; softening sterile places; giving off beneficial chemicals and oxygen. She suggested that indoor plants help with loneliness, as they are something to care for; this was one among many benefits.

Sarah then went on to explain there has been a surge of interest in houseplants among home owners and researchers.

Their effects on PTSD have been the subject of a lot of studies. Research has shown that one can recover more quickly just by viewing a plant for five minutes a day. Another study was done taking two groups of young men, one watched video games, the other potted up plants with compost, they then switched after being tested. Their mood when working with the plants was less agitated and happier. We are genetically predisposed to be with nature. Plants around us lowers blood pressure, reduces stress levels, relieves depression and anxiety.

Sarah went through some tips for keeping our plants healthy. If possible, always water them with rainwater, also when using a spray mist. Do not over water especially during winter. Plants need feeding, the compost they are



It was noted that the local elections due to be held in May have been cancelled in Surrey, awaiting the results of the interim Unitary Authority proposals due to be submitted by Surrey County Council to central government in May. As yet there is no clarity as to how the existing county will be divided into two Unitary bodies or what the role of Parish Councils will be in the future.

Finally, the Chair asked for the Parish Council's support for a community event to celebrate the 80th anniversary of VE Day on Sunday 4th May. A suggestion was that there would be a service at St Michael's Church for the community at 10 am followed by a picnic, possibly in the Rectory Garden.

The next meeting is the Annual Parish meeting on Wednesday 21st May followed by the Annual Mickleham Parish Council meeting the same evening. David Ireland (Chair)



in just lasts for two months. So more nutrients are needed to help them thrive. Look at where your plant originates from. This will help you to decide on the best place in your house. She suggested suitable plants for some locations. Southwest facing windows get very hot: cacti would be a good choice there. In bright but not direct sunlight, she suggested rubber plants. In a shady northeast facing window, try peace lily. Steamy bathrooms are the best place for tropical plants, as 60% humidity is needed.

We all left the meeting feeling more knowledgeable about our house plants. And Sarah's motto of bringing the outside in really does work.

All your annoying & odd jobs fixed fast



Are you: struggling to get your odd jobs done?
lacking the necessary skills?
struggling to find the time?
lacking the correct tools?
struggling to find a reliable person?

Mickleham based
07939 131593
help@toolboxtony.co.uk

see toolboxtony.co.uk for more information on services offered

Plumbing
 Heating
 Boilers

Servicing
 Fault Finding
 Gas Work

Call 07716 269620 email luke@ljcplumbingheating.co.uk

Get IT Fixed, Get IT Connected

Expert Repair & Maintenance



Brockham based. No call out charges. Fully transparent quotations with no hidden costs. We make technology work for you.

Call us now on
01737 845980

ChalkHill Systems
www.chalkhillsystems.co.uk

DORKING PEST CONTROL SERVICES

Local Authority Approved Contractors

Our services include: wasps, bee swarms, hornets, bed bugs, fleas, flies, ants, cockroaches, rats, mice, squirrels, rabbits, moles, foxes and deer

EXPERTS IN PEST CONTROL THROUGHOUT SURREY

01306 743001 Ivor: 07710 117491 Chris: 07971 519415
Family-run business with over 30 years' experience

www.dorkingpestcontrol.com

remedial roofing

For people with roof issues and deficiencies

- New roofs – slate & tiled roof specialists
- All roof repairs, moss removal & gutter clearance
- Flat roofs, traditional felt & GRP fibreglass
- New uPVC Fascia, soffit & guttering

Obtain an up-to-date report of remedial roofing on www.checkatrade.com



ALL WORK GUARANTEED
Call us today for a FREE quotation on:
01306 304736 | 07852 833802

info@remedialroofing.co.uk www.remedialroofing.co.uk



Friends of Juniper Hall Juniper Hall's Ecosystem

At our meeting on 20th March the Friends of Juniper Hall were entertained by Steven Savage who is a staff member, biologist and keen birdwatcher.

He explained that one of his main tasks at present is recording and understanding the biodiversity of the Juniper Hall grounds. This is the first year that a systematic study has taken place with three main interrelated objectives

- * To collect and share data with other organisations and societies
- * To generate resources for use in teaching
- * To feed into the development of the grounds and provide suitable habitats for wildlife

Data collected can also be shared on social media, used to encourage others to engage in wildlife protection and lead to improvements in well-being as a result of participation.

Juniper Hall sits in a Site of Special Scientific Interest (SSSI) and there are a number of habitats including woodland and hedgerows within the grounds and connections to the surrounding landscape. One important area is the new well-being garden which includes a pond. This is a quiet area where wildlife

can be observed away from the general bustle of student activity. In the picture a pigeon, enjoying the pond, has been captured by the trail camera.

Data collection is now being organised and, for example, regular bird walks are taken along a particular route (trancept) and 43 bird species have been observed (or heard) and their location recorded. This will be extended to other creatures such as bats to build up a picture of what parts of the ground suit which species and what can be done to further protect them.

These activities are being supplemented by the use of trail cameras with up to five being deployed throughout the site. This has to be done in a sensitive way however to avoid inadvertently photographing children.

Stephen finished his talk by showing some fascinating and amusing video clips from the trail cameras. This included watching crows attacking the mammal traps that are put out to capture mammals for study. The crows are after the food in the traps and have learnt where they are hidden and the best time to look for them.

Our next meeting on is the 20th May



(11 am for 11:30am) when John Fitcher and Howard Gray, the Juniper Hall beekeepers, will tell us more about their activities and also enlighten us about the huge number of bee species that roam our gardens and countryside. All the morning meetings are followed by lunch of soup, sandwiches and fruit included in the charge of £10 for members and £15 for non members. The bulk of these charges go into the fund which the Friends use to support Juniper Hall by purchasing items to enhance the experience of the children attending courses.

New members would be very welcome and you can find out all about the Friends of Juniper Hall's activities and how to become a member by visiting our website friendsofjuniperhall.org or contacting us via email on friendsofjuniperhall@gmail.com

Peter Almond

Alexanders arrives in Mickleham

When we moved to Guildford in 1989, after seven years living and working in Norway, Alexanders – *Smyrnum olusatrum* was only found in Surrey outside Cranmore School at West Horsely on the A246. Open any guide to wildflowers and it will still tell you it is uncommon away from the sea. However, in recent years it has been spreading slowly inland along roadsides and now is found in several places in Surrey.

It is a relative of cow parsley and wild carrot and a member of what used to be called the *Umbelliferae* family, or Umbellifers, but which has been renamed *Apiaceae*. This is a large family with many species growing in the UK. Alexanders has dark green, glossy,

three-trefoil leaves and the yellow flowers, similar in structure to cow parsley, which are open from March to June. It is a thick stemmed plant and grows to about 1.5m tall.

Alexanders was introduced into Britain by the Romans as a pot herb. I often wonder if this means it was grown in pots or whether it was thrown into cooking pots! I recently met a professional gardener who told me he grew it in a raised bed and that it has a long tap root. Perhaps pot herb does allude to the cooking pot – or maybe both.

A precursor to celery, also an umbellifer, the flower heads, side shoots and roots can be steamed, sauteed or braised and taste rather like celery.* The yellow flower heads are best eaten just before

flowering. They can also be dipped in batter and deep fried. The black seeds when ground have notes of citrus, cardamom and myrrh. Clearly a useful plant back in the day.

This year it has appeared in the parish for what I believe is the first time. There is a large clump of it on the verge beside the north bound carriageway of the A24 about 200 yards south of Swanworth Lane by the first of a row of cherry trees. Hopefully it will become a long-term resident of Mickleham.

Please do not rush out and harvest it. Leave it to grow and set seed.

Barbara Jones

**This is not editorial advice so readers try it at their own peril.*



Your property matters....

Garbett & Partners offer a 'local alternative' professional, bespoke property agency, specialising in Surrey and the Home Counties.

A unique and discreet personal service whether you are considering selling or purchasing.

tim@garbett.partners - 07831 576616

suzie@garbett.partners - 07979 876380

www.garbett.partners

& Derek Horne Associates

Mickleham based

Town Planning Consultancy

Family business winning planning permissions for over 30 years

T: 01372 665015 M: 07767 477978

W: Horneassociates.com

E: info@horneassociates.com



Piano Tuition

in the local area, specialising in beginners and younger pupils

Competitive rates. Contact Poppy Parfitt on 07821 017146 or poppyparfitt@icloud.com

Garden & Landscaping Services

Lawn mowing • Hedge cutting • Leaf clearance
Garden maintenance • Planting • Fencing
Gates • Astro Turf installation and much more...



Contact Us Today

07832 139475

E: sdgroundmaintenance@gmail.com

W: www.sdgroundmaintenance.co.uk

Enhancing your beauty with every brushstroke



MAKE-UP FOR ALL OCCASIONS:
WHETHER
YOU ARE GETTING MARRIED,
ATTENDING AN EVENT,
GOING TO A PROM, OR
JUST WANT TO TREAT YOURSELF

• MAKE-UP LESSONS • NAILS
LASHES & BROWS

07516 789619 @naturalbeautybybecca@gmail.com

ALEXANDER HOME RENOVATIONS

ELECTRICIAN

- City & Guilds Qualified & Registered with NICEIC
- Household, Garage & Garden Building rewires
- Fuseboard Consumer Unit upgrades and repairs
- Socket Outlets, Indoor & Outdoor Lighting

BATHROOM & KITCHEN INSTALLER

- Complete Design and Layout Consultations
- All Plumbing & Part P Bathroom Electrical Alterations
- Wall & Floor Tiling, Decorating & Plastering
- All Carpentry & Associated Small Building Works



MICKLEHAM-BASED • FULL PUBLIC LIABILITY INSURANCE • ALL WORKS GUARANTEED • LOCAL REFERENCES AVAILABLE
Contact Mark for free estimates and advice M: 07831 401 439 LANDLINE: 01372 372 780 E: mark@ahrenovations.co.uk

What connects tadpoles and potatoes?*



Pond dipping

At St Michael's, our outdoor environment plays a pivotal role in shaping our curriculum. This spring we have been rather spoilt with the delightful Easter weather. Sunny days highlighting spring's vibrant colours, growing plants, and the awakening of wildlife, all offer an excellent opportunity to connect children with nature, explore key learning experiences, and foster a sense of wonder.

We are fortunate to have a pond, gifted to the nursery five years ago through Juniper Hall's Big Nature Grant. The spring warmth has seen the pond area grow in popularity with the children. Our high-level pond with windows to see the underwater activity, creates some magical 'wow' moments. We have also been pond dipping and discovered creatures we can't see through the windows. Joint learning for both the

children and the staff as we use our pond identification books to see what wildlife we have.

Most years somebody will bring in a jar of tadpoles, this year a clump of frog spawn was donated and we have been able to witness one more step in the frog lifecycle. While taking tadpoles or spawn from the wild is not recommended,

the educational value and encouraging the development of future nature enthusiasts is a justifiable sacrifice (sorry frogs!) We would normally release froglets back to the pond where the spawn was found, but this clump was found in a shrinking puddle, so we will let survivors take their chances in the nursery pond. However there are predatory sticklebacks in the pond, so we need to ensure some vegetation hiding places for the froglets to survive. Apparently, toad tadpoles are more likely to survive in a pond with sticklebacks as they do not taste as good! All fabulous teaching and learning experiences.

We will also be following the lifecycle of our potatoes. One of the most dramatic and successful vegetables to grow for an academic year nursery (we must harvest them before we break up mid-July!) Hilary Budd

*What connects potatoes and tadpoles? Following lifecycles.



Planting our potatoes



In Aid of Kent, Surrey

Sussex Air Ambulance

Charity Coffee & Cake Morning

at Westhumble Chapel

on Saturday 10th May

10 am – 12 noon

Raising funds for Kent, Surrey, Sussex Air Ambulance



NATIONAL GARDEN SCHEME Garden Open For Charity

Ashleigh Grange

Off Chapel Lane, Westhumble, RH5 6AY

Friday 20th June

Evening opening 5.30 - 8 pm
£10 to include wine

Sunday 22nd June

2 pm to 5 pm
£5 children free

Home-made teas and plants for sale.
Dogs welcome.

Private visits also by arrangement mid-May – July
01306 884613 ar.gilchrist@btinternet.com

INSPIRATIONAL Box Hill School

FOR GIRLS AND BOYS AGED 11-18

We offer a variety of
programmes including
GCSE, International
Baccalaureate, A Levels



LEARN
MORE



Come and visit Silvermere Softplay Centre, where the joy and benefits of play are exceeded!

An accessible and inclusive space for children and young people to unleash their natural energy
through movement, play, and connection with others



- Soft play sessions
- Pre-school play
- Parties

Our warm and welcoming café is the perfect space for everyone to relax and connect.

For more info and booking: www.silvermere-softplay.co.uk
Proprietors: Katie and Michael of School Lane, Mickleham



ST MICHAEL'S COMMUNITY NURSERY MICKLEHAM VILLAGE HALL

DELL CLOSE RH5 6EE

Weekdays 9.15 am - 2.45 pm (term time)

Mornings or longer sessions available

Cosy, well-resourced, pre-school nursery for 2-5 year olds.

Superb garden and forest school

Government funding accepted

Contact us for more information about admissions

01372 361021 www.stmichaelscommunitynursery.co.uk



St Michael's Church Community Group Food Bank Collection

We welcome items for adults, children and infants including:

- non-perishable food
- laundry and cleaning supplies
- personal hygiene products

LOCAL COLLECTION POINTS

MICKLEHAM

Garden Corner off Old London Road
Mary Banfield 01372 373912

WESTHUMBLE

St Anthony Pilgrims Way
Sue Tatham 01306 882547

The Stepping Stones
Westhumble Street



Also items may be brought to Coffee Mornings at Westhumble Chapel and St Michael's Church on Sunday mornings

To make monetary donations go to: <https://dorkingarea.foodbank.org.uk/give-help/donate-money/>

CHECK THE COMMUNITY WHATSAP EACH WEEK FOR ITEMS CURRENTLY IN SHORT SUPPLY

The Meaning of Easter

The sun is shining and it really feels like spring now. The children have been enjoying lots of sunny playtimes and we are looking forward to more sunshine (fingers crossed) in the Summer Term. We have had a wonderful (and very busy) Spring Term.

Years 1 and 2 had a very special day at Guildford Cathedral thinking about Easter. They took part in a range of Easter activities including decorating cross shaped key rings and learning about the parts of the Easter story. The children really enjoyed this day and deepened their understanding of the meaning of Easter. We are very thankful for the wonderful people at the cathedral who made this day possible. A big thank you goes to our lovely parent helpers who came with us.

Our value this half term is thankfulness and this has been naturally woven throughout school.

The children said a huge thank you to their amazing mummies during our Mothers' Day assembly. Year R painted

beautiful pictures of their mums, Year 1 wrote thoughtful similes and Year 2 wrote lovely acrostic poems about their mums. There was not a dry eye in the house. The children showed such resilience and confidence and we are very proud of them. Thank you to our wonderful friends who provided daffodils, and teas and coffees.

During Easter Pause Day, the children focused on the main parts of the Easter Story: Palm Sunday, The Last Supper, Good Friday and Easter Sunday. The children are able to talk about the Easter Story, and some have articulated that they are thankful to Jesus as he gave his life for us. This shows a deepening understanding of the story's significance and its impact on our lives. During this day the children asked some 'big questions' such as 'why is it called Good Friday when the day was sad?' These questions lead to interesting and thoughtful discussions, and we are amazed by our young children demonstrating such curiosity and



eagerness to explore the story further. One child commented that the story links to our learning about plants, as he said that Jesus was like a plant which died, but then he was like the seed which came back to life. Our young children continue to amaze us.

We ended the term by singing Easter Songs to our parishioners and having our end of term Easter service in the church. These occasions demonstrate what a special community we have and how much joy our children bring. The children really enjoyed the Easter Egg Hunt which was organised by our wonderful friends. Thank you so much for this, it was definitely a highlight for the children.

Becci Chapman and Judith Moore.



A collage of pictures from the Mother's Day Workshop (see page 5).



Word Search

A word search from Barbara Jones is based on sports played with a ball.

The words hidden in the grid are:

baseball cricket football hockey
pelota rugby league squash volleyball
basketball croquet golf lacrosse polo
shinty table tennis boules fives handball
netball rounders snooker tenpin bowling

Find the word in the puzzle.

Words can go in any direction.

Words can share letters as they cross over each other.

| | | | | | | | | | | | | | | |
|---|---|---|---|---|---|---|---|---|---|---|---|---|---|---|
| L | A | S | V | F | S | M | C | P | T | C | P | P | J | Z |
| E | L | V | Q | E | L | R | C | L | J | L | E | O | W | J |
| U | G | A | V | U | O | O | L | H | L | S | L | L | Y | D |
| G | L | I | B | Q | A | Y | G | A | H | A | O | O | T | X |
| A | F | L | U | E | E | S | B | N | C | Z | T | Q | N | S |
| E | I | E | A | K | S | T | H | D | P | R | A | A | I | R |
| L | T | X | C | B | E | A | S | B | K | L | O | N | H | O |
| Y | G | O | P | K | T | E | B | A | X | H | N | S | S | U |
| B | H | H | S | C | L | E | U | L | T | E | K | R | S | N |
| G | M | A | T | U | D | L | N | L | T | T | N | I | V | D |
| U | B | Q | O | V | O | L | L | E | Y | B | A | L | L | E |
| R | G | B | R | Y | X | B | L | S | N | O | O | K | E | R |
| T | E | N | P | I | N | B | O | W | L | I | N | G | K | S |
| K | L | P | L | L | A | B | T | O | O | F | S | B | D | R |
| A | O | M | F | T | E | K | C | I | R | C | O | X | Q | H |



Flower Arranging

a demonstration by

Fiona Bliss

Tuesday 6th May 7.30 pm

at The Stepping Stones Pub

Limited Places Tickets £8 Booking Essential

If you are interested in developing some simple hints and tips to make the most of shop-bought flowers whether for a professional-looking beautiful bouquet or stunning centrepiece join Fiona for this presentation. She will include advice on which flowers to buy; how to condition and jazz them up utilising garden foliage; how to gift wrap/present in vases and containers. There will also be an opportunity to purchase the displays created by Fiona at the end of the evening. Numbers will be capped to give members the chance to view the presentation and ask questions, so booking is essential.

If you are interested in joining us, in order to secure a place if any remain available we will need immediate payment. Please check availability before making your payment by contacting Pauline Davis 07759 646353 or paulinedavis33@icloud.com

Payment by Bank Transfer to: The Garden Shed
a/c No. 10821752 Sort Code 09-01-29 (Business account)

Magnificent magnolias



We are blessed as our area seems to provide the ideal conditions for flowering garden shrubs. At this time of year the most prominent are the magnolias in many gardens. However, in recent years magnolias have been flowering earlier and as a result the blossom has been caught by frosts, turning to a sad brown mush. This year the lovely sunshine has again brought them into early bloom, and although the nights have been cold, the frosts have, so far, stayed away. Most of the samples in Westhumble must have been planted when the houses were built post WWII and they are now massive trees.

EST. ——— The ——— XVI

RUNNING HORSES



You are sure of a warm welcome at this historic 16th century inn. Join us daily for lunch and dinner and on a Sunday bring the whole family to us for our delicious award winning Sunday roast.

We have 7 charming en-suite rooms, updated with modern facilities, named after different racecourses.

Opening Hours:

Mon-Sat 12pm-11pm / Sun 12pm-10pm

Old London Road, Mickleham, Dorking, RH5 6DU

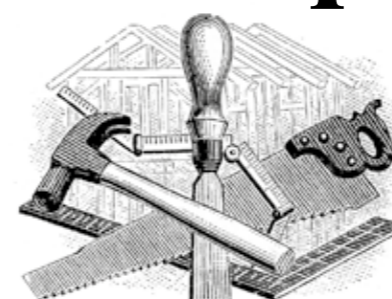
01372 388 422

bookings@therunninghorses.co.uk

J S Wilson

Mickleham

Carpentry & Building Services



Extensions ~ Conversions
Refurbishments ~ Property Maintenance
Fully guaranteed ~ Fully insured
One call WILL solve it all

Contact Jason on: 07761 926684 or 01372 379359
jswilsonconstruction@gmail.com



**RESIDENTIAL • COMMERCIAL
AGRICULTURAL • SCHOOLS • ACOUSTIC
HOARDING • GATES • SECURITY**

RICHARDSON & BRADS FENCING LTD
T: 01306 640 143 - 01483 414 745
E: INFO@RBFENCINGLTD.CO.UK
W: WWW.RBFENCINGLTD.CO.UK
A: 168 SOUTH STREET, DORKING, SURREY, RH4 2ES
UNIT 15 MARTLANDS INDUSTRIAL ESTATE, SMARTS HEATH LANE, MAYFORD, GU22 0RQ

Helping older people to live well in their own homes since 2010



- ♦ Award winning care ♦ Companionship services
- ♦ Home help services ♦ Personal care services
- ♦ Highly trained Care Professionals

If someone in your family needs a little help please contact us on
01372 741544



www.homeinstead.co.uk/epsom
Email: simon.burrowes@homeinstead.co.uk



Each Home Instead franchise is independently owned and operated. Copyright © Home Instead® 2022.



YOUR LOCAL PROFESSIONAL TREE HEALTH CARE SPECIALISTS

Felling • Pruning • Stump Removal
Planting • Woodchip • Air Spade Services
Consultancy

Call us on 01306 741800

office@treeline.co.uk
www.treeline.co.uk



**WELL-SEASONED LOGS
FREE LOCAL DELIVERY**

npd
REFURBISHMENTS

Bathrooms • Plastering • Tiling • Kitchens



We can offer specialist services or complete project management including inspirational design ideas. No job is too big or too small.

What you can expect from NPD Refurbishments:

- Close attention to detail and true craftsmanship with trusted testimonials
- Use of high-quality materials yet working with suppliers to obtain the best possible prices
- Use qualified and reliable contractors where necessary
- Unlimited options and flexibility to allow changes throughout the building process
- Help and advice in selecting amenities and options you will be happy with
- Constant communication to keep aware of project status
- Down to earth approach but high level of workmanship
- A tidy job environment to minimise disruption
- An open, comprehensive and honest quote

01403 738103 07917 457286
npdrefurbishments.com

Need help with your accounts?

Running a business needs time and energy – don't waste your time working on your accounts when you can work on your business instead!

At a4c we provide fixed fee accountancy solutions with friendly support throughout the year. Services include accounts, tax returns, VAT, payroll, book-keeping etc.

Friendly, approachable and local to Dorking – we enjoy getting to know our clients so call us today for a no obligation chat.

We LOVE numbers so YOU don't have to!

01737 652852

esther@a4cgroup.co.uk

www.a4cgroup.co.uk

