

# MICKLEHAM PARISH Magazine

A community magazine for Mickleham and Westhumble



A.N. Colwell 1984

July/August 2025





**SURREY HILLS  
HEATING LTD**

**DOMESTIC BOILER SERVICING  
AND BREAKDOWN**

**OIL, LPG & GAS BOILERS**

Call Dathan on: 07944 575970  
sales@surreyhillsheating.co.uk  
www.surreyhillsheating.co.uk



**Bullimores**



Accountants for Life  
Tax • Accounts • Probate  
Inheritance Tax &  
Executorship

T: 01306 880880

E: partners@bullimores.co.uk

W: www.bullimores.co.uk

Bullimores LLP licensed to carry out the reserved legal activity  
of non-contentious probate in England & Wales by the ICAEW



# Stepping Stones

**MORE THAN JUST A PUB**

CAFÉ-BAR RESTAURANT & ALFRESCO DINING  
Live music events Take-aways available

Available for functions / private parties / celebrations / family gatherings

Bikes, Beers and Big Hearts Saturday 2<sup>nd</sup> August

in aid of Kent, Surrey and Sussex Air Ambulance

Jazz Nights - 28<sup>th</sup> July & 25<sup>th</sup> August

Quiz Nights- 8<sup>th</sup> July & 12<sup>th</sup> August

Every second Tuesday  
of the month  
from 7 pm  
Teams of up to 6

01306 889932  
steppingstonespub@gmail.com  
www.steppingstonesdorking.co.uk

*Please check website for up-to-date menus  
events and current opening times*



Sixth Generation Family Business

24-hour Service, Funeral Plans, Free Advice on all Related Matters,

Free Parking On Site, Memorial Masonry

Trellis House, 190 South Street, Dorking, Surrey, RH4 2ES

01306 882266

office@sherlockandsons.co.uk

www.sherlockandsons.co.uk



# MICKLEHAM PARISH Magazine

July/August  
2025

Mickleham  
Parish  
Magazine

A community magazine for  
Mickleham and Westhumble  
published under the auspices  
of Mickleham PCC with an  
independent editorial panel.

The magazine is published at the  
beginning of each month except  
January and August.

COPY DEADLINE  
SEPTEMBER MAGAZINE  
Sunday 10<sup>th</sup>  
August

send to:  
editor@micklehammag.co.uk

Co-editors  
Charlotte Daruwalla  
07933 300744  
Jan Budleigh  
07780 976301

Contributions in any form  
are welcome as are good  
quality photographs. There  
is no charge for advertising  
local charity and community  
events. However the editors  
reserve the right to shorten  
omit or reformat articles  
submitted for publication  
depending on space.



Printed by Holbrooks Printers  
Portsmouth

Mickleham Rectory

Hi everyone

July and August are often quieter months in church and community life. We usually have a few weddings and christenings at church to enjoy and keep me reasonably busy. Our Worship for All service at 10 am on 6<sup>th</sup> July will be themed Caring for Creation and held in the marquee in the Rectory garden involving some extra work but good fun. The summer usually also gives opportunity to slow down a little, although those caring for children will be kept very active. Certainly grandparenting will be more demanding but more fun!

The changes in seasons and in pace are important and are gifts to us. I do not think we are designed to be at full stretch and filling every moment of every day with busyness and yet it can feel like there is no alternative. When I was a child, I remember the summer holidays as always warm and dry and most days there was opportunity to play or just hang out with local friends. We were encouraged to be out of the house and amuse ourselves with little supervision, but knowing where to get help if needed. Today less freedom is possible, but I wonder if we are encouraging children to need always to be busy and to rely on iPads and phones to be entertained rather than to pause sometimes and potter or daydream or play.

What about us; do we take time to pause and observe what is going on under our nose? I love being with my granddaughter, not yet three, as we wander in the garden. She notices everything and stops to look at ants, bees, flowers, stones, cobwebs and feathers. She is much nearer the ground than I am and can easily bend down to look but pausing to wonder is very refreshing. Why do I not do it more often?

Christianity and Judaism hold to the principle of 'Sabbath', a day of rest. Jews and Christians trace this back to the book of Genesis, when God created everything in six days and rested on the seventh. We find in the 10 commandments 'keep the Sabbath holy.' The word Sabbath means 'cease' so it is a day or time of ceasing work and resting. We can make it holy by setting aside time to worship God and be with God-given friends and family. In the New Testament Jesus commented that the Sabbath was made for man. It is for our good that we cease work and focus on relationships and relaxation. How we use it or which day or which few hours we choose is up to us. Christians usually have Sunday as their Sabbath so they can attend church but in a complex society such as ours that is not always possible. This summer why not take opportunity to pause more often, recharge and refocus and connect with God and nature and those we love and care about. Enjoy!

God bless.

Please also see the information about our new Parish Visitor and get in touch if that might be helpful for you.

*Sandra*

The Rev'd Dr Sandra Faccini, Parish Priest

## St Michael's Church Services

10 am Sunday Services available on Zoom

Joining information for both Zoom and telephone users is available in Pews News Online each week. If you would like to join us by Zoom then contact Alison Wood for the codes or to ask her to include you on the emailing list for Pews News: [admin@micklehamchurch.org.uk](mailto:admin@micklehamchurch.org.uk) / phone 01372 376443. We hope as many of you as possible will be able to join us for worship.

Please refer to Pews News Online for the latest information. If you missed any of the services or would like to revisit them all are available on the church YouTube channel: <https://youtube.com/channel/UCI4pbewCT9iZhcd0EjBIw>



## Bible Study

### Monday Evening Group

At Westhumble Chapel 7.45 - 9 pm  
Contact Amanda Wadsworth  
[aewadsworth@hotmail.com](mailto:aewadsworth@hotmail.com)

### Thursday Morning Group

At Westhumble Chapel 11.30 - 12.30 am  
Contact Alison Wood 01372 376443  
[adminsUPPORT@mickleham.church](mailto:adminsUPPORT@mickleham.church)  
**ALL WELCOME TO EITHER GROUP**



First Saturday of the month

## Coffee Morning

Westhumble Chapel

**Saturday 5<sup>th</sup> July**

**Saturday 2<sup>nd</sup> August**

Come along between 10 am and noon

Coffee and cake £2 Free drinks for children  
Everyone welcome

For further information call Jonathan Blake 07787 126966



## Tea @3

**Monday 21<sup>st</sup> July**

Host: Jennifer Louis

Westhumble Place

No Tea in August

If you can help with future events, please contact  
Julia at [siberrman@btinternet.com](mailto:siberrman@btinternet.com)

**ALL WELCOME TRANSPORT AVAILABLE**

## Mums/Carers and Toddlers Group

Westhumble Chapel

11 am - 12 noon

All welcome



To run second Monday of the month from September

The first session of the group was held on Monday 9<sup>th</sup> June from 11 am to noon at the chapel in Westhumble.

There were some delightful attendees and it was decided to continue with the group in the autumn.

The next session will be on Monday 8<sup>th</sup> September. We then hope to meet every second Monday of the month.

All are welcome.



*Social gatherings open to everyone*

## Women's and Men's Saturday Breakfasts

### WOMEN'S BREAKFAST

3<sup>RD</sup> SATURDAY OF THE MONTH

NEXT BREAKFAST

JULY 19<sup>TH</sup>

AUGUST 16<sup>TH</sup>

Book with: Stephanie Randall  
[srandall55@gmail.com](mailto:srandall55@gmail.com)

### MEN'S BREAKFAST

4<sup>TH</sup> SATURDAY OF THE MONTH

NEXT BREAKFAST

JULY 26<sup>TH</sup>

AUGUST 23<sup>RD</sup>

Book with: Andy Diamond  
new email [adiamond714@gmail.com](mailto:adiamond714@gmail.com)

## Annette - Pastoral Visitor

My name is Annette, I would like to introduce myself as a pastoral visitor for the parish, a position I am delighted to hold. Let me tell you a little about myself. After school in Portsmouth, I moved to London, becoming an electron microscopist, running an electron microscope unit in a microbiology department for some years. I married, and after my second child, retired from microbiology, only to be invited back to complete a doctorate.

I finally retired and reinvented myself in textiles, gaining a diploma in stitched textiles. I joined a church recording group and developed an interest in ecclesiastical textiles. When I moved to Dorking; through the Arts Society, I joined a group at St Michael's Mickleham to renovate and restore the textiles.

I had been baptised and confirmed and always liked being in churches but had never regularly belonged to a church since Sunday school. I have

always believed in God but was happy to experience him in the world he has made. Mickleham changed all that and I found myself called to join the church and I know God has called me.

I wanted to give more to the church, and it was suggested that I become a pastoral visitor. I knew I had good listening skills, was able to empathise with people and understood the importance of confidentiality. I started with a day course for existing pastoral visitors which convinced me that this is what I would like to do. I have now completed safeguarding training and a three-day training course as well as being introduced to the congregation.

I am purely a visitor, someone who can listen, offer understanding, companionship and perhaps advise a way forward for any troubles and concerns, to adults. I can support the bereaved, the sick, the lonely, the worried or we can just have a chat. We



already have a Helping Hands group in the parish but the pastoral visitor's role is more closely linked to the church and has a recognised structure, supported by the Diocese.

If you might find a pastoral visit helpful, or you know of someone who might like a visit, I can be reached at:

**Annettejc46@gmail.com**  
01306 882214

## Church Eco-Group The Merlin Bird Voice-Call App

It is free, at least at the moment! And it seems to be pretty accurate, albeit that it was first aimed at the US bird population, derived as it is, from Cornell University, New York State. I know that some of my British 'twitching' buddies have a high regard for it too. It does give the odd false positives, but these are often pretty obvious to anyone with a bit of bird common-sense: if it tells you that you have just passed an Dalmation pelican up a tree in Worcester Park you can generally discount this as being a noise of human derivation. It seems somewhat better than competing apps.

Its greatest accuracy is when you hear a

bird calling and want the app to identify it. It is fairly quick to activate to record, and gives you rapid feedback. But it is great to activate it during a walk, so that if you hear something you wish to identify, you can record straight away. It can solve the 'I wonder what that was' question.

I used it during a recent trip to Canada, where I was unfamiliar with many of the birds: without it, the Red-Breasted Sapsucker and the Hairy Woodpecker would have passed me by.

Although it is a little demanding of iPhone battery, it is also possible to simply set your phone up in your garden and record for half-an-hour: giving you a

fuller record. Or a record of contributors to your dawn chorus. Or helping with the RSPB Garden Birdwatch. The Church Eco-Group is considering using it in this way for a community bird count, by asking as many as possible, within Mickleham and Westhumble, to set up Merlin at a specific time/day and compile the overall results.

So do try the App. You may get hooked.

Church Eco-Group

NB: there are also photographic apps for identification of bugs, butterflies, fungi and wildflowers, but I am not qualified to comment on their accuracy. Nevertheless, they may make your dog-walk even more exciting!

## Coffee Morning in June

Thank you to everyone who supported the Coffee and Cake at Westhumble Chapel last Saturday: a total of £355 was raised for the Kent, Surrey and Sussex Air Ambulance charity. If you were not able to come but would still like to donate to the charity, the website link is <https://aakss.org.uk/donate/>



Superb professional  
cleaning of carpets  
oriental rugs  
upholstery curtains  
and leather  
Guardsman  
anti-stain protection

- spot stain and odour removal
- leather cleaning specialists
- flame retarding
- dust mite reduction service
- all work fully insured & guaranteed

For a free no obligation quotation call today  
Freephone 0808 144 9071  
John Joannides 28 Bracken Close Bookham

**Safeclean**  
*The furnishing care specialists from GUARDSMAN*



*Pinehurst  
Rest Home*

*We aim to provide an excellent service at competitive rates supporting emotional physical and social needs of our clients always respecting and protecting their status as adults.*

- Residential and 24-hour daycare
- Excellent cuisine
- Facilities for disabled: medic bath / lift
- Home doctor in attendance
- Single & sharing rooms
- Convalescent & short stays
- Lounge with TV & piano
- Separate dining room
- Physiotherapist chiropodist & hairdresser
- Entertainment: theatre visits / parties & cabarets held on premises

National Trust Road Box Hill  
Mickleham Dorking Surrey RH5 6BY  
Telephone: 01306 889942 / 888253



**SIMON HOOPER**  
For all your decorating needs...

Professional, friendly and speedy service at all times

- |                          |                             |
|--------------------------|-----------------------------|
| Fully insured            | Insurance work              |
| Exterior painting        | Interior decorating         |
| Free quotes & advice     | Oil & Water-based products  |
| Commercial/Domestic work | Wallpaper hanging & removal |

07947 135 376 0208 3978 962  
www.slhdecoratingservices.com

**51°NORTH**

**SERVING DELICIOUS  
BREAKFAST, BRUNCH  
& LUNCH EVERYDAY**

**GOOD TO KNOW:**

- Full alcohol licence
- Venue available for private hire
- Outside catering service
- Boutique bedrooms available for short stays
- Walking routes to 51°North available
- Dogs welcome



LONDON RD, MICKLEHAM, RH5 6EH  
FIFTYONE.DEGREESNORTH@YAHOO.COM | 01306 320455

*Dorking  
Decorators*

PROFESSIONAL  
PAINTERS & DECORATORS

**Established Local Family Business**

- Over 20 years' experience
- Internal & External
- Commercial & Domestic
- Friendly, First Class Service
- Surrey / Sussex / Greater London

**FREE ESTIMATES**  
**01306 640418**  
www.dorkingdecorators.co.uk  
As approved by Checkatrade

## RGS Surrey Hills

*Ms Hayley Robinson, Headmistress at RGS Surrey Hills (formerly Box Hill School) writes:*

**W**e are pleased to share some exciting news with you, our friends and neighbours here in the Box Hill area.

As of 2<sup>nd</sup> June 2025, Box Hill School has joined the Reigate Grammar School (RGS) Group of Schools and will become known as RGS Surrey Hills. While the name may be changing, the heart of our school remains the same, and we want to reassure you that our values, our sense of community, and our commitment to nurturing well-rounded, character-led education are as strong as ever.

This new partnership is a positive step forward for our school. It opens up fresh opportunities for our pupils and staff, while helping us remain true to everything we already do so well. We will continue to be a small, inclusive co-educational day and boarding school for 11–18-year-olds, set in our beautiful rural home.

Our leadership team, our dedicated teachers, and our close-knit community all remain firmly in place.

Becoming part of the RGS Group which includes Reigate Grammar School, recently named The Sunday Times Independent School of the Year



*Panoramic view of the school*

2025, as well as local prep schools like Chinthurst, St Christopher's, Reigate St Mary's and Micklefield, and brings with it a wealth of experience and support. Just as important, it is a partnership rooted in shared values: kindness, respect, ambition, and a genuine belief in giving every child the chance to thrive.

As the school's headmistress, I am especially proud to lead our community as we embark upon this exciting new chapter. With this partnership, we are able to build on everything we already do so well, nurturing confident, compassionate young people with a strong sense of self and purpose. Joining the RGS Group strengthens our foundation and expands opportunities for our pupils and staff. As RGS Surrey Hills, we remain true to our spirit while aiming higher than ever, preparing our students not just for exams, but for life.

RGS Headmaster of Reigate Grammar School, Shaun Fenton also shared:

'This partnership gives choice to local families. RGS Surrey Hills is different to Reigate Grammar School but we will share the same holistic ambitions: that our students will enjoy their childhood,

learn about themselves and the world, and will leave school ready for a happy and successful adult life.'

'Importantly, Reigate Grammar School and RGS Surrey Hills will remain fully independent in character and admissions. Each will offer a clear, separate pathway to success.'

You will now find our website here: [rgs-surreyhills.org](https://rgs-surreyhills.org)

To our local village and community, thank you for being part of our journey. We are excited about what the future holds, and we look forward to continuing to grow together, with you beside us every step of the way.

*Editor: As this was breaking news while the magazine was being prepared, not all references have been updated. The next issue will reflect the change in full.*



*Gatton Park visit (see page 6)  
The interior of St Andrew's Church*

**Tea and Cake**  
**at St Michael's Church**  
**Sunday**  
**27<sup>th</sup> July**  
**31<sup>st</sup> August**  
**3pm–5pm**





## Mickleham & Westhumble Local History Group Guided Tour of Gatton Park

Now home to the Royal Alexandra & Albert School, a co-educational state boarding school, Gatton Park is only open to the public on monthly Open Days and for guided tours during school holidays. We met our guide, Alan, in Gatton Hall where we heard about the history of the Park before beginning our tour of the grounds. Alan is one of more than 100 volunteers for the Gatton Trust, the charity which maintains the Park on behalf of the school.

In 1086, the first house at Gatton was owned by Bishop Odo of Bayeux (who also owned the Manor of Mickleham), the half-brother of William the Conqueror. Of more interest to our group was Sir George Colebrooke, Gatton's richest owner who commissioned Lancelot 'Capability' Brown to landscape the parkland in the 1760s. The project cost just over £3,000, (roughly £5 million in today's money) and took six years to complete, understandable considering the hard manual labour involved in creating a large lake and Serpentine canal, enlarging two ponds and moving vast amounts of earth for tree planting. Colebrooke also added the 'Town Hall', a cast-iron Doric Temple where elections for the rotten borough of Gatton were held. Despite having fewer than 20 electors, Gatton had two MPs.

Another notable resident was Lord Monson who purchased Gatton Park in 1830. Inspired by his Grand Tour of Europe he created the spectacular Marble Hall based on the Corsini Chapel in Rome. The final private owner was Sir Jeremiah Colman, of

Colman's Mustard fame, who bought the estate in 1888. It remained in the family for the next 60 years, although the property was requisitioned for use by the Canadian Army and Royal Military Police during WW2. In 1934 a disastrous fire destroyed the house, including the Marble Hall. All that remained were the Corinthian columns from the portico added by Colman in 1891. The house was rebuilt in a more functional style two years later. Like Sir Trevor Lawrence at Burford Lodge, Colman was a world-renowned expert on orchids and made good use of the glasshouses at Gatton.

With the discussion turning towards horticulture, we started our tour of the gardens. Alan told us about the numerous projects to restore the gardens which had been largely neglected for several decades after WW2. A Japanese garden was constructed for Colman in 1910, complete with oriental bridge, tea house and ponds. By 1999 it was buried under dozens of 'weed' trees, with no sign of the original garden. The restoration was covered in an episode of the TV series *Lost Gardens* (still available to view on YouTube), featuring a more youthful Monty Don and a colossal amount of mud. Further restoration has been completed recently with guidance from the Japanese Garden Society, including advice to keep the stepping stones close together as Japanese ladies wearing kimonos would only have been able to take very small steps.

Next stop was the Old World Rose

Garden, where restoration has only just started. The rectangular sunken pond is still water-tight but little else remains. The rock garden, however, is a success story. Constructed in 1912 by J Pulham & Sons it was also totally overgrown by the 1990s. The pond edging was made from Pulhamite, an artificial rock invented by Pulham and very popular in the late Victorian and Edwardian eras. In Mickleham, it was used in the Winter Garden at Juniper Hill. Now that Gatton's rock garden has been restored to its former glory with functioning waterfall, it is one of the highlights of the Park, particularly at the February Open Day when the snowdrops and winter aconites are in bloom.

After a walk through the old orchard, we arrived at St Andrew's Church, which is Grade I listed and much too small for the school to use. As in Mickleham, there had been a Saxon church on the site, although the current church has its origins in the 13<sup>th</sup> century. Much of what we see now is the result of a major restoration for Lord Monson in the 1830s. The interior contains a remarkable collection of timber fittings and stained glass acquired by Monson on his Grand Tour. After leaving the church, there was just time for a quick look round the churchyard, where the Colman family vault occupies a prominent position. We returned to the Hall, our visit ending with tea and cake on the terrace, from where we could admire the stunning view across the lake.

Judith Long



## Mickleham Parish Council Annual Parish Meeting

The Annual Parish Meeting held in St Michael's Church was well attended and Nicola Davidson gave a very helpful summary of the purpose of the Housing Survey which households in Mickleham had been asked to complete. She outlined some of the responses to the survey. The overall summary was that there is a shortage both of smaller properties to which members of this community can downsize and a complete lack of affordable properties, either to rent or purchase. The results of the survey can be used to inform developers should the opportunity arise to build new properties in Mickleham. The chairman then gave his Annual Report which was included in the May edition of the parish magazine.

The important issue of the future of St Michael's Infant School was raised and attention was drawn to the fact that it will be offering flexi-schooling in the coming year (details in the June issue).

Other matters raised included the ongoing issue of the traffic noise and speed especially on the Old London Road and A24.

The meeting closed at 8.15 pm.

It was followed by the Annual General Meeting of the Parish Council, which began with the election of Councillor Will Dennis as Chair, following the retirement of David Ireland. Unfortunately, Will Dennis had been detained in hospital and so was unable to chair the meeting. David Ireland agreed to do so in his absence.

The usual report was received from the police liaison officer Dave Sadler which highlighted several minor traffic incidents. The accounts for the past

year were received and it was noted that the council had balanced its books in that period.

Councillor John Lowes reported on the last meeting of the Norbury Park Forum and concern was expressed about the uncertainty surrounding a number of tenancies of Surrey County Council properties, including Swanworth Farm where the tenant Nick Bullen has been served notice for the end of September.

Four quotes were received for the continuing maintenance of the grass verges and hedges on the footpaths around the recreation ground and the Burmester field and it was agreed that Andrew Clark should continue as the contractor for the coming year.

The new Wednesday meet at Ryka's was discussed and the increased noise it has created as a result of a minority of noisy motorbikes. It was agreed to contact Ryka's asking them to include a paragraph on their website asking those attending to show some consideration to residents living in the surrounding neighbourhood.

County Councillor Hazel Watson reported that new signage was to be installed at the junction of the Old London Road and the A24 at the Box Hill School (RGS) end of the village in response to concern expressed about two motorists turning immediately right into the ongoing traffic on the southbound carriageway. She also mentioned that the new Unitary Authorities would come into being in 2027 and would be an East West division of the county into two authorities. It would have little effect on the future role or importance of parish councils.



Top: retiring chair David Ireland;  
Below: new chair Will Dennis

The meeting ended with a presentation to the retiring chairman, David Ireland, after 10 years in the role. He expressed his sincere thanks to all who had contributed to the presentation and for the support given to him in the past 10 years as chairman. He sent Will Dennis every good wish for a speedy recovery and in his new role as Chairman.

Mickleham Parish Council

Please note: full details of the Housing Needs Survey can be viewed on the website under Housing Needs Survey. [www.micklehamparishcouncil.gov.uk](http://www.micklehamparishcouncil.gov.uk)



Gatton Park photos from far left: Stephanie Randall and Frances Presley in front of the portico; the parterre and Capability Brown's lake; the Colman family's grave; the Rock Garden.



## Bliss Chimney Sweeps

All appliances swept

Traditional brush & rod Power sweeping

Pots & cowl fitted  
Repointing, lead work & roof repairs

Fully insured Certificates issued  
Free friendly advice  
07739 638431  
Blisschimneys@gmail.com



Your visiting

PHYSIOTHERAPIST

SUE JUDD MCSP HCPC

40 years of experience.

All your requirements for elderly  
mobilisation & post-operative  
rehabilitation.

07834 227 999 sue-judd@sky.com

## EDE BROS

REMOVALS · STORAGE · SHIPPING ·

- Since 1926, Capel-based and family owned
- STRESS-FREE, local, national & worldwide
- Contact us for your FREE estimate...

01306 711293  
edebros.co.uk



## YOUR LOCAL FARM SHOP ON DENBIES WINE ESTATE

farm shop deli plant centre

Open daily 9.30 am to 5.30 pm and Sundays 10 am to 5 pm

Local Produce, Seasonal Food, Plants and Flowers

Fermentation Workshops 22<sup>nd</sup> & 27<sup>th</sup> Aug

Floristry Workshops 18<sup>th</sup> & 20<sup>th</sup> Sep : see website for details

We deliver veg bags and more to the local area on Fridays

see [www.vgfarmshop.com](http://www.vgfarmshop.com) or email [vegbag@farmshop.com](mailto:vegbag@farmshop.com) for details

LOCAL • NATURAL • ETHICAL 01306 880720 [www.vgfarmshop.com](http://www.vgfarmshop.com)

We provide the best  
possible care for your feet

Book your appointment:  
01372 454583 [bookhampodiatry@gmail.com](mailto:bookhampodiatry@gmail.com)



Bookham  
Chiropody & Podiatry Clinic  
Diagnosis, Expert Treatment & Professional Care  
for Your Feet

3 Hazel Parade, Penrose Road  
Fetcham KT22 9PY  
[www.bookhampodiatry.co.uk](http://www.bookhampodiatry.co.uk)

## TONY WINCH

CARPENTER, JOINER  
& CABINET MAKER

[www.tonywinch.com](http://www.tonywinch.com)

01306 742373  
07969 016 924

## P J Oliver & Son

Window cleaning

House & Garden Maintenance

Roof Repairs, Guttering

Painting & Decorating

Ground works, fencing, hedge cutting,  
and tree work

Also Pest control

Call Phil on 07722 158 111

Email [Oliviagarrett79@gmail.com](mailto:Oliviagarrett79@gmail.com)



NEVER NICK nothing from the punters, young Nellie,' Ma would say when I were a kid. 'And don't gossip about 'em neither.'

She clipped me round the ear when she saw me nicking a biscuit from Mrs Brown's cupboard. And again when she caught me sniggering with my pals about the ladies' shoes I'd seen in Mr Purley's wardrobe. Now I never take so much as a teabag from a client unless it's offered to me and my stories down the pub are strictly confidential.

I took over from Ma when her arthritis got too bad. Her clients were pleased to have me – they want someone they know, not a different team each week from Busy Bees or Marvellous Maids. I'm often asked if I can take on someone new, but I only do if one of my regulars has passed on or moved away. I'd love to earn more, but I have my standards. Course it'd be easier if my Pete didn't gamble, but that's another story.

My punters are a mixed bunch. Most juggle work and families like the rest of us. But I have a few celebrities: an EastEnders actress, a Champions League footballer and a publicist who helps stars – especially when they're in trouble (which seems like quite a lot of the time). I treat everyone the same, mind, whatever their fame or fortune.

I started working for Grant Miller – he's the publicist – three years ago. He's a real character – loves telling funny stories about his famous clients. He always starts by saying that nothing must go beyond his four walls. 'Mum's the word,' I say, trying to act like I'm not desperate to hear the next juicy titbit.

Today I arrived to find Grant effing and blinding like it was the end of the world. 'I've lost my bloody phone,' he shouted, his face like a beetroot. I made tea and suggested he pop into Time2Talk in the High Street, as they're doing some great offers.

I'm usually quite easy-going, but I did take offence at being called 'a dopey moron'. Turns out it's not the actual

## Mum's the Word

© A Short Story by Alison Walton

phone that's the problem, but the confidential client data that's stored in it. Apparently someone could be selling the info RIGHT NOW and making an EFFING FORTUNE.

Grant said he'd tried ringing the phone from his landline, but it clearly wasn't in his flat as it didn't make a BLEEDING SOUND. No, he said, it wasn't on silent. And no, he didn't want my advice about retracing his footsteps to where he last had it – which is what I do when I lose something. When I left, he was swearing and emptying his drawers of Hugo Boss undies all over his bedroom floor.

I suppose it was because I was fed up and had my head down that I noticed something glinting amongst the pansies in the flowerbed as I left. It was his phone. There's a keypad on the gates to the property and he must've dropped it as he punched in the number.

Of course I should have returned it. But I hadn't forgotten the 'dopey moron' insult. And if he hadn't dismissed my advice so rudely, he might've found it himself.

I took the phone home and put it on my kitchen table where it taunted me like it was the apple from the Garden of Eden. When at last I switched it on, it said Enter Code. I tried some numbers, including Grant's birthday, but none worked.

I was kind of relieved about that, until Pete told me that he'd lost 500 quid at the bookies. Then I rather wished that I could make an 'EFFING FORTUNE RIGHT NOW'.

Sometime later I remembered Grant losing his temper when a password wouldn't work on his computer. 'I always use the same password for everything,' he'd shouted, 'so who's changed it?' I ignored his accusing glare and pointed out that his

Caps Lock button was on, which did indeed turn out to be the problem.

So now I wondered whether he might've used the same code for everything that needed a number. I carefully entered the code he'd given me for the gate.

It worked!

I'm not a whizz with technology but I managed to copy the data from the phone onto Pete's old computer. Boy, the tabloids would love the saucy photos of Grant and his famous clients!

Later I nipped back to Grant's place and returned the phone to the pansies. I hid behind the communal bins, held my nose and waited until Grant came out for his evening run. As he reached the gate, I rang his phone, hiding my number so he wouldn't know it was me.

I watched him extract the phone from the flowerbed and stare at it in disbelief. I hung up before he answered but he didn't care, running off and punching the air in celebration.

Now I'm home with a nice cup of tea. I won't do anything with the data. Not yet anyways. As long as Grant behaves and Pete pays his debts, well – as I always say – Mum's the word.



## BUTTERFLY CONSERVATION OPEN GARDEN

Seven Gables, The Downs,  
Leatherhead, Surrey KT22 8LF

Sunday July 6<sup>th</sup>  
10-4pm

Adults £10, children under 18 free.  
Includes refreshments

Visit this beautiful open garden near Leatherhead. Containing thoughtful planting for pollinators and with wildlife at its heart. Discover the formal garden, orchard, wildflower meadow, and stroll the circular woodland walk all surrounded by chalk grassland.

Unfortunately the garden is not suitable for wheelchairs, and we ask that dogs are left at home. Parking is available on the road on the right, please do not park on the verges.

Butterfly Conservation is a charity registered in England and Wales (254937) and in Scotland (SC039268)





# Norbury Park Limes

I read with interest Barbara Jones' article in the May issue about the impressive mistletoe on the lime tree in the picnic area in Norbury Park near Swanworth Farm. She mentions the lime trees near Lodge Farm that came down in the storm of 15-16<sup>th</sup> October 1987. This was in fact a stand of trees rather than an avenue, as can be seen in the aerial picture taken in the early – mid '70s. We always believed that the trees were the tallest limes in south east England, though on what basis I do not now remember.

On the night of the storm Judy Kinloch was alone at Lodge Farm apart from



The lime trees are on the right of this photograph of Lodge Farm before the storm.

her dog and cats. When the window of the spare room blew off in her hand when she tried to close it, she realised how strong the wind was, and thought about lasting out the storm in the cellar for safety. In the end though she stayed upstairs, saying afterwards she felt 'if the house goes I go'. The entire stand of trees came down that night, and the noise must have been terrific and terrifying. She and the dog did spend some time sheltering under a table.

Luckily for Judy and Lodge Farm the prevailing wind was away from the house, which was unscathed apart from a few missing tiles. However the power went down and the river flooded so it was another two days before she could get out or we could get over to check she was alright.

Replacing the lime trees would indeed be a fine memorial.

Adria Kinloch

## Mickleham and Westhumble Local History Group

### Where is it?

### Heritage Open Day - 20<sup>th</sup> September

The local history group is preparing for this year's Heritage Open Days – the theme is 'Architecture'. We will be mounting an exhibition featuring a selection of notable structures in Mickleham and Westhumble on

Saturday 20<sup>th</sup> September in St Michael's Church. This will include photographs and information such as when and by whom they were built, their design, people associated with them and other relevant history. In preparation for this

we are taking photographs of various architectural features associated with these structures for a quiz to introduce the exhibition. Here are three for starters. We hope to include more in the next magazine.

Sue Tatham



1



2



3

# Henley Regatta

One of our readers (my husband) subscribes to the weekly magazine *Country Life*. It arrives by post and at one time it dropped through the letterbox every Wednesday like clockwork. For months now it has seldom arrived on a Wednesday and is sometimes a week or more late. But that is another, familiar, Royal Mail story.

I am lucky enough to get an early sight of his magazine when it does turn up. *Country Life* dated 23<sup>rd</sup> April arrived with a very colourful cover picture which had a familiar look to it. The index page confirmed my suspicion that it was a painting by Sherree Valentine-Daines, of this parish, titled 'Watching the Regatta'. An article in *Country Life* was about 'The Season' which encompasses the Henley Regatta, the Boat Race, opera at Glyndebourne, Royal Ascot and many other events such as the Chelsea Flower Show and Wimbledon. There was advice on how we should dress for these events!

I was more curious about how her painting came to appear on the cover.

I asked Sherree if we could include an article in the magazine. We talked and this is the result. She told me that *Country Life* had obtained her image from the Bridgeman Art Library; paintings typically enter the Library through partnerships with museums, galleries, and collections. This image was painted about 25 years ago so it came as a lovely surprise to Sherree that it was going to be used. It is the second time one of her paintings has appeared on the cover. She told me that she had been to the Regatta many times. She bought copies of the magazine for family members when it was published.

Sherree's art appears in exhibitions round the country, most recently in Mayfair. In May she spent three days at the Chelsea Flower Show



painting in public to raise funds for the charity Songbird Survival. Her painting was auctioned by Adam Henson of *Countryfile* raising £20,000 for the charity. Locally she has donated paintings for auction at village fetes and other events.

Charlotte Daruwalla

## Cows are fussy feeders



Some of the plantain plants rejected by the cattle

The field opposite us has cows coming and going. A couple of days after they returned recently I was puzzled to find small Greater Plantain (*Plantago major*) plants pulled up by their roots and left scattered about.

Cows do not have upper incisor teeth. Instead, they have a horny pad. They wrap their very flexible tongues around the grass to pull it into their mouths and break it off. I came to the conclusion that they must be inadvertently pulling up the plantains with the grass and then spitting them out. Another of life's little mysteries solved perhaps.

Barbara Jones

## Wordsearch - At The Seaside

Here is a seasonal Wordsearch from Barbara Jones

B	E	S	E	L	K	N	I	W	T	L	P	L	S	S
E	D	Z	O	L	S	H	B	B	I	U	D	O	U	E
A	A	G	A	L	E	S	O	F	N	I	T	O	N	D
C	N	H	J	U	R	A	E	C	K	A	L	P	B	I
H	E	E	K	G	T	G	H	D	O	J	V	K	U	T
A	M	W	D	T	U	A	Z	B	E	Y	A	C	R	W
H	O	P	R	A	N	T	E	K	C	U	B	O	N	G
U	R	I	R	D	P	F	N	I	Q	P	A	R	N	P
G	P	D	J	O	I	S	C	L	I	F	F	I	S	A
S	R	U	E	L	B	E	K	H	G	Y	F	W	E	D
T	D	E	C	K	C	H	A	I	R	A	S	O	L	D
Y	P	D	X	R	A	D	G	L	M	E	V	M	K	L
W	A	V	E	S	W	I	M	M	E	R	I	F	C	I
O	M	A	E	L	G	N	I	H	S	K	S	P	O	N
Z	M	J	E	L	L	Y	F	I	S	H	C	M	C	G

Find these words hidden in the grid:

beach deckchair lifeboat Punch and Judy surfing boat trips ice cream  
lifeguard rockpool swimmer bucket gales paddling shingle tides cliff  
gull pier spade waves cockles jellyfish promenade sunburn winkles



## A Confidential & Safe Space to Talk

Counselling • Mind & Body Healing  
Reiki • Relax into Nature Sessions  
Face to face/Online/Outdoors/Distance

Supporting you with compassion and  
understanding through challenging times



Call Judith Cobby  
on 01306 882229  
or 07790 614448

[www.healing-inspiration.co.uk](http://www.healing-inspiration.co.uk)

## TIM LANGLEY

*Experienced craftsman*

RESTORATION & REPAIRS OF  
ANTIQUE & MODERN FURNITURE  
FRENCH POLISHING & RE-FINISHING  
GENERAL REPAIRS

Free estimates

01372 457700 07960 486455

[tmlangley@virginmedia.com](mailto:tmlangley@virginmedia.com)

## Building Plans

*For home improvements & extensions*

*Including planning & building regulations*

*Fast efficient service at competitive rates*

**MICHAEL LLOYD** CEng MICE

*For free consultation:*

Phone: 01483 205479 or 07958 791 402

[mfl\\_uk@yahoo.co.uk](mailto:mfl_uk@yahoo.co.uk)

## DORI VANA PLUMBING

Bathroom renovations and  
all plumbing services

07977 220465 / 01306 887282

[dvanaplumbing@gmail.com](mailto:dvanaplumbing@gmail.com)



## RGS

EST.1985

**Gardens large and small  
we maintain them all**

All aspects of private and commercial garden  
and estate maintenance landscaping undertaken  
Fencing, grass & hedge cutting

Telephone: 01737 841524 Mobile: 07887 838666

References available upon request

## PAINTING DECORATING

ANDREW CLARK 07800 796 737

INTERIOR & EXTERIOR • CARPENTRY • HANDYMAN  
WORKING LOCALLY 20+ YEARS RELIABLE PROFESSIONAL RECOMMENDABLE



## KING WILLIAM IV

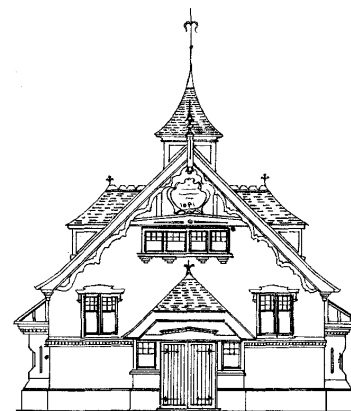
Dear Friends/Neighbours,

Wow! We have been blessed with the weather this summer - long may it continue. We  
love seeing so many of you on such a regular basis.

We are doing a select number of music events this year - Sunday 4.30-7.30 pm on July 6<sup>th</sup> & 20<sup>th</sup> and August  
10<sup>th</sup> & 31<sup>st</sup>. It's Ali on 10<sup>th</sup>. He gigged for us years ago when at Juniper Hall & he subsequently played at our  
wedding, so always a great evening.

Hope to see you soon Anne, Eamonn & Kat.

Byttom Hill Mickleham 01372 372590 [www.thekingwilliamiv.com](http://www.thekingwilliamiv.com)



## Mickleham Village Hall available for hire

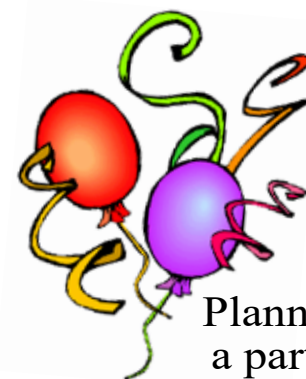
Hall bookings  
Table & chair hire

Deanna Darnell

07790 941 601

[bookings@micklehamvh.co.uk](mailto:bookings@micklehamvh.co.uk)

[www.micklehamvillagehall.org.uk](http://www.micklehamvillagehall.org.uk)



Planning  
a party?

Equipment  
available for hire

China ~ Cutlery

Electric urn

Equipment hire

Mary Banfield

01372 373912

[admin@micklehamvh.co.uk](mailto:admin@micklehamvh.co.uk)

## Community Directory

BOX HILL AND HEADLEY HEATH (National Trust) 01306 888793

Lead Ranger – Meredith Westall (Merry) [meredith.westall@nationaltrust.org.uk](mailto:meredith.westall@nationaltrust.org.uk)

07811 088097

Friends of Box Hill – Chair Lyn Richards 01737 842889

[lyn@mra.uk.net](mailto:lyn@mra.uk.net)

RGS SURREY HILLS

Headmistress – Hayley Robinson

01372 374814

[reception@boxhillschool.com](mailto:reception@boxhillschool.com)

DORKING CRICKET CLUB

Chairman – Andrew Homewood

[homewooda@hotmail.co.uk](mailto:homewooda@hotmail.co.uk)

DORKING GROUP OF ARTISTS

Exhibition Secretary – Patricia Booth

[patriciabooth100@gmail.com](mailto:patriciabooth100@gmail.com)

DORKING LAWN TENNIS & SQUASH CLUB

Maddy Halliwell

[madeline\\_halliwell@hotmail.co.uk](mailto:madeline_halliwell@hotmail.co.uk)

DORKING RUGBY CLUB

Jim Evans

07789 176417

[jim@flintcottage.net](mailto:jim@flintcottage.net)

THE GARDEN SHED

Pauline Davis

07759 646353

[paulinedavis33@icloud.com](mailto:paulinedavis33@icloud.com)

JUNIPER HALL FIELD CENTRE

01306 734501

Head of Centre – Sarah Wyper

[enquiries.jh@field-studies-council.org](mailto:enquiries.jh@field-studies-council.org)

[s.wyper@field-studies-council.org](mailto:s.wyper@field-studies-council.org)

Friends of Juniper Hall

[friendsofjuniperhall.org](http://friendsofjuniperhall.org)

[friendsofjuniperhall@gmail.com](mailto:friendsofjuniperhall@gmail.com)

MICKLEHAM CHILDREN'S PLAYGROUND ASSOCIATION

Secretary – Sarah Parfitt

07767 891772

[sarah@sarahparfitt.com](mailto:sarah@sarahparfitt.com)

MICKLEHAM CHORAL SOCIETY

[www.micklehamchoral.org.uk](http://www.micklehamchoral.org.uk)

THURSDAYS 8 - 10 pm – MICKLEHAM VILLAGE HALL

Conductor – Juliet Hornby

01372 373106

Secretary – Mike Benson

[secretary@micklehamchoral.org.uk](mailto:secretary@micklehamchoral.org.uk)

MICKLEHAM OLD BOX HILLIANS FOOTBALL CLUB

Secretary – John Atewell

01372 374745

MICKLEHAM PARISH COUNCIL

SEE WEBSITE FOR MEETING DATES

[www.micklehamparishcouncil.gov.uk](http://www.micklehamparishcouncil.gov.uk)

Chairman – Will Dennis

[wdatmpc@gmail.com](mailto:wdatmpc@gmail.com)

Parish Clerk – Feena Graham

[clerkatmpc@gmail.com](mailto:clerkatmpc@gmail.com)

MICKLEHAM PARISH MAGAZINE

Co-Editor – Charlotte Daruwalla

07933 300744

[editor@micklehammag.co.uk](mailto:editor@micklehammag.co.uk)

Co-Editor – Jan Budleigh

07780 976301

[editor@micklehammag.co.uk](mailto:editor@micklehammag.co.uk)

MICKLEHAM VILLAGE HALL

Chairman – David Kennington

01372 362309

[davidkennington144@gmail.com](mailto:davidkennington144@gmail.com)

Bookings Manager – Deanna Darnell

07790 941601

[bookings@micklehamvh.co.uk](mailto:bookings@micklehamvh.co.uk)



# ST MICHAEL'S CHURCH

*within the United Benefice  
of Leatherhead and Mickleham*

INCUMBENT — The Rev'd Will Perry 01372 372313

## PARISH PRIEST

The Rev'd Dr Sandra Faccini \* 01372 417664  
07763 488961  
parishpriest@mickleham.church  
\* Main working days: Monday, Tuesday and Sunday

## CHURCHWARDENS

Lucy Adshead 07773 294026  
cw@mickleham.church

John Banfield 07831 606493  
acw@mickleham.church

## PARISH SAFEGUARDING OFFICER

Vickie Leney 01306 884054  
safeguarding@micklehamchurch.org.uk

## PARISH ADMINISTRATOR

Alison Wood 01372 376443  
admsupport@mickleham.church

## PCC SECRETARY

Caroline Jones 07504 271376  
pccsecretary@mickleham.church

## TREASURER

Richard Siberry 01372 375303  
pcctreasurer@micklehamchurch.org.uk

## ORGANIST

David Fishwick 0208 7732420  
davidfishwick1@btinternet.com

## WEDDINGS CO-ORDINATOR

Elaine Machin 01372 724972  
weddings@micklehamchurch.org.uk

## BAPTISMS CO-ORDINATOR

Vickie Leney 01306 884054  
baptisms@mickleham.church

## FUNERALS CO-ORDINATOR

Carole Brough Fuller 01737 842918  
funerals@mickleham.church

## AUDIOVISUAL

Kelvin Pritchard 07770 280410  
av@mickleham.church

## PCC ECO GROUP

David Kennington 01372 362309  
davidkennington144@gmail.com

## WEBSITE MANAGER

Cassandra Charles Bagott info@mickleham.church

**www.mickleham.church**

*For information about services for other denominations  
see website pages.*

*Search on 'Churches Together Mole Valley'*

## Tools With a Mission

List of acceptable donations at **www.twam.co.uk**

Including agricultural, carpentry, and mechanic's tools,  
sewing machines, haberdashery and IT equipment.

# CALENDAR

## JULY

1	Tuesday	7 pm	Compline in church
5	Saturday	10 am to noon	Coffee morning at Westhumble Chapel p2
6	<b>Third SUNDAY of Trinity</b>	10 am 10 - 4 pm	Tent Worship for All Service in Rectory Garden Open Garden in Givon's Grove p 5
13	<b>Fourth SUNDAY of Trinity</b>	8 am	BCP Holy Communion at Westhumble Chapel
15	Tuesday	7 pm	Compline in church
		10 am	Holy Communion
19	Saturday	9 - 10 am	Women's Breakfast at The Stepping Stones p2 Festival of Nature Juniper Hall p19
20	<b>Fifth SUNDAY of Trinity</b>	10 am	Holy Communion
21	Monday	3 pm	Tea@3 p2
22	Tuesday	7 pm	Compline in church
26	Saturday	9 - 10 am	Men's Breakfast at the Stepping Stones p2
27	<b>Sixth SUNDAY of Trinity</b>	8 am 10 am 3 - 5 pm	BCP Holy Communion at Westhumble Chapel Holy Communion Tea and cake at the church p5

## AUGUST

3	<b>Seventh SUNDAY of Trinity</b>	10 am	Family Service
5	Tuesday	7 pm	Compline in church
10	<b>Eighth SUNDAY of Trinity</b>	8 am 10 am	BCP Holy Communion at Westhumble Chapel Holy Communion
<i>Copy deadline for September magazine</i>			
16	Saturday	9 - 10 am	Women's Breakfast at The Stepping Stones p2
17	<b>Ninth SUNDAY of Trinity</b>	10 am	Holy Communion
19	Tuesday	7 pm	Compline in church
24	<b>Tenth SUNDAY of Trinity</b>	8 am 10 am	BCP Holy Communion at Westhumble Chapel Holy Communion
23	Saturday	9 - 10 am	Men's Breakfast at the Stepping Stones p2
31	<b>Eleventh SUNDAY of Trinity</b>	10 am 3 - 5 pm	Morning Prayer Tea and cake at the church p2

## Dates for your diary

Saturday 13 <sup>th</sup> September	M&WHS Autumn Show p19
Saturday 20 <sup>th</sup> September	Mickleham & Westhumble Local History Group Heritage Open Day
Saturday 8 <sup>th</sup> November	Westhumble Bonfire and Fireworks

## MEMBERS OF THE PAROCHIAL CHURCH COUNCIL

Andy Diamond	Elaine Machin
Celia Lyons	Tim Mathieson
Caroline Jones	Beverley Mehta
Vickie Leney	Richard Siberry
Susan McGrath	Amanda Wadsworth
Paddy MacVean	

## ST MICHAEL'S CHURCH COMMUNITY GROUP COMMITTEE

Mark Day	07852 117249 mickleham@hotmail.com
Denise Darling	denisedarling4@btinternet.com 07780 673372
Andy Diamond	07789 775354 adiamond714@gmail.com
Kelvin Pritchard	07770 280410 Kelvin@wan2lan.com

## ST MICHAEL'S CHURCH COMMUNITY GROUP HELPING HANDS INCLUDING FOOD FOR FRIENDS

*A service for all residents of Mickleham and Westhumble*

Examples of services we offer:

- Essential shopping/collection of prescriptions
- Changing library books
- Small tasks: eg changing fuses, altering clocks etc
- Dog walking
- Visiting/befriending
- Home-cooked meals for local families going through difficult times

Requests to:

Will Dennis 07903 842674 **wdwdennis@icloud.com**  
(who can put requests onto WhatsApp)  
Mary Banfield 01372 373912 **mgbbmw@aol.com**  
Frances Presley 01306 882473 **jasempres@gmail.com**

*More helpers needed – please contact  
Frances if you can spare some time.*

## REGISTERS

### BURIAL AND INTERMENT OF ASHES

Friday 6<sup>th</sup> June Burial of Gillian Elizabeth Bates and  
Interment of Ashes of David Oldham Bates

### FUNERAL

Tuesday 10<sup>th</sup> June Donald Arthur Yeates



# Community Directory

Continued from page 13

MICKLEHAM & WESTHUMBLE BADMINTON CLUB  
Membership Secretary – Sarah Pritchard tinkerbell0044@hotmail.com

MICKLEHAM CRICKET CLUB  
Membership contact – Will Dennis 07903 842674  
will@micklehamhallfarm.co.uk

MICKLEHAM & WESTHUMBLE HORTICULTURAL SOCIETY  
Chairman – David Kennington 01372 362309  
www.surreycommunity.info/mwhs or davidkennington144@gmail.com

MICKLEHAM AND WESTHUMBLE LOCAL HISTORY GROUP  
Chairman – Ben Tatham 01306 882547  
ben@thetatham.co.uk or www.micklehamwesthumblehistory.co.uk

MOLE VALLEY DISTRICT COUNCIL 01306 885001  
Cllr Chris Budleigh 07801 520059

councillor.budleigh@molevalley.gov.uk

Cllr Abhiram Magesh 07765 126399

councillor.magesh@molevalley.gov.uk

Cllr Leah Mursaleen-Plank 07803 353352

councillor.mursaleen-plank@molevalley.gov.uk

THE ARTS SOCIETIES (FORMERLY NADFAS)  
Betchworth – Mary Venning 01306 883301  
Dorking – Sue Tatham 01306 882547  
Leatherhead – Beverley Mehta 01372 374304

ST MICHAEL'S CHURCH OF ENGLAND (A) INFANT SCHOOL 01372 373717  
info@stmichaels-dorking.surrey.sch.uk

Friends of St Michael's School – friendsofstmichaels2017@gmail.com

ST MICHAEL'S COMMUNITY NURSERY  
WEEKDAY MORNINGS – MICKLEHAM VILLAGE HALL  
Supervisor – Hilary Budd 01372 361021  
stmichaelsnursery@btinternet.com

SURREY COUNTY COUNCIL 03456 009 009  
Councillor – Hazel Watson 01306 880120  
hva.watson@btinternet.com

SURREY WILDLIFE TRUST 01483 795440  
info@surreywt.org.uk

TREE WARDEN  
David Kennington 07546 952521  
davidkennington144@gmail.com

WESTHUMBLE NEIGHBOURHOOD WATCH  
Lead Co-ordinator – David Allbeury 07860 227451  
westhumble.neighbourhood.watch@gmail.com

WHATSAPP GROUP  
Neil MacKay nlpm@lineone.net

## ADDITIONAL CONTACT INFORMATION

CITIZENS ADVICE  
Dorking – Lyons Court 01306 732302  
Leatherhead – Swan Mews High Street 01306 732301  
CRIMESTOPPERS 0800 555 111  
POLICE Non-emergencies 101

(often quicker to make online report) <https://report.police.uk/>

Neighbourhood Specialist Team – Dorking Rural East  
General enquiries molevalley@surrey.pnn.police.uk

NHS Urgent and emergency care 111

# Babysitting by local youngsters

Those listed below are at least  
14 years old.

Gracie Owen \*\*07790 900649  
Eva Lanceley \*\*07903 630567  
Ella Parfitt 07746 882175  
Bea Moore \*07444 557958  
Farah Patel 07757807246  
Mia McPhillips \*07792 187160

\*Parent/partner's mobile number

We have recently lost many of our sitters as they move on to higher education or work-life. We wish the best of luck to all of them.

Now is an ideal time to join the list if you were thinking about it. There are fewer people listed so the possibility of more bookings.

*If you would like to add your name to this list please get in touch with*

editor@micklehammag.co.uk

No Charge

## Advertising in the Parish Magazine

Please contact  
ads@micklehammag.co.uk  
Small ads: a nominal fee is charged for ads where items or services are bought or sold.

We have been advised to print the following reminder:  
*We cannot guarantee the quality of the goods and services offered by our advertisers.*

*We are very grateful to all our advertisers, who make the production and distribution of this magazine possible.*



# Derek Bailey 1928 to 2025

Derek and his beloved wife, Doreen, moved from Brighton to Dell Close in Mickleham in 1976, when he became the manager of Cranthorns, a garden centre and pet store in Leatherhead. Together, they fully embraced village life, becoming familiar faces in community events. Derek was a valued member of the William IV Darts Team, and when the team could no longer play there, landlord Steve Cunningham welcomed them to The Running Horses. Derek also faithfully delivered the parish magazine in Dell Close for 30 years, a small testament to his commitment to his neighbours and friends.

He spent his national service in the RAF and was stationed in Malaya. After losing Doreen in 1983, Derek spent 42 years as a widower, yet his life remained

full of companionship and meaning. He was an independent and determined man, still driving his car at 90. When he gave up driving after Covid, he remained steadfast in his routines, taking the bus to Leatherhead three times a week to do his shopping and doing his own cooking and gardening right up until the time he went into hospital. He died aged 97.

Derek held a deep appreciation for wildlife. One memorable evening, he invited Mary and Eric Flint into his garden to witness two badgers feeding and playing, a moment that reflected his love for nature and his generosity in sharing it with others.

For three decades, Christmas Day was spent with Maggie and Tony Berryman, a testament to the long-



lasting friendships and support of neighbours.

Derek was loved and respected by his friends and neighbours and will be missed.

By neighbours and friends  
Dell Close

# Helping Hands

Do you sometimes have a little spare time to take someone to a doctor's appointment?

Do you sometimes have a little spare time to collect some shopping or a prescription?

Do you sometimes have a little spare time to help a local resident who is having a problem of any kind?

If your answer to any of these questions is 'Yes' please would you consider adding your name to the 'Helping Hands' list.

Full details of 'Helping Hands' is always in this magazine and I have a list

of seven names of willing helpers. However, sometimes those on the list are not available, as has happened recently, and I have had to disappoint a request for assistance. Also, a few of our volunteers live several miles from Mickleham/Westhumble and it is difficult to offer help for an early appointment.

If you feel that you would like to add your name to the list of possible drivers please give me a ring on 01306 882473, if there is no reply there is an answerphone to leave a message and telephone number. Frances Presley

# VE Day photo

We can rely on our readers for information. On page 7 of the June issue there is a photo of residents celebrating the 50th anniversary of VE Day in 1995. One of the ladies had not been identified before the photo was published.

Maggie Lamberth wrote: *The unknown lady next to Linda Boyle and Elizabeth Watson is Barbara (Babs) Kenwood who lived in one of cottages by the railway lines. She now lives in Dorking.*

# New neighbours, new babies

If you have any community news, for example, new neighbours, old neighbours moving out, new babies etc, please let us know. Please check that the people concerned are content

to see their name in print. We do not specify the house, but people appreciate keeping up with local news. Send any information to **editor@micklehammag.co.uk**

# Community News

Welcome to James, Louise and daughter Libby Hallett. They have moved to Westhumble from London.

Libby's great-grandparents, Mick and Val Hallett, have moved to Mick's late mother's house in Westhumble where she lived until her death in 2002.

Readers will be saddened to know that Gill Bates, another long term resident of Westhumble, passed away in May. The funeral took place on 6<sup>th</sup> June. Her husband David died in 2019. They generously hosted many Westhumble talks. We send deepest sympathy to her family and friends.

Fred Duffy, long-time resident of Camilla Drive before returning to Dublin, died on 14<sup>th</sup> June. Another neighbour who generously hosted Westhumble talks. We send condolences to Helen and family.

David Ottridge of Dell Close died on 11<sup>th</sup> June. He served on the Parish Council for many years as Treasurer and only gave up the position due to failing health. We send deepest sympathy and condolences to Mari and family.





We invite you to join us  
for a talk by  
**Catherine May**

## All About Roses



Photographer Ben Tatham

Tuesday 5<sup>th</sup> August at 7.30 pm at the  
The Stepping Stones Pub, Westhumble  
Tickets £6 on the door - no need to book

See our website for details  
[www.gardenshed.club](http://www.gardenshed.club)

Any Questions

Pauline Davis 07759646353  
or [paulinedavis33@icloud.com](mailto:paulinedavis33@icloud.com)

## Mickleham Children's Playground Update

Users of the playground and passers-by will have noticed that the swings are currently out of use. This is a precaution as there are holes in some of the supporting timbers. They are still under warranty so we are working with the suppliers to repair them as soon as possible and we apologise for the disappointment this will cause in the meantime. The rest of the equipment is still perfectly safe to use.

The team of dedicated volunteers have been running the playground for several years and succession planning is needed. We are looking for a new chairperson to take over next summer and also additional volunteers to help with weekly checks and/or to become trustees. If you think you could help for a year or two and would like to know more about what is involved, please contact Sarah Parfitt on [sarah@sarahparfitt.com](mailto:sarah@sarahparfitt.com)

The Playground is such an important facility for so many children and their families. Please help if you can.

David Ireland

## Ranmore Common Open Gardens



One of the gardens opened in this event organised by the Garden Shed. Funds raised for St Barnabas Church and Princess Alice Hospice.

## It's Buzzing at Juniper Hall

At their May 2025 meeting the Friends of Juniper Hall were entertained by Juniper Hall's bee-keepers with an update on how the sunny spring has taken over their lives. Bees across the local area have taken advantage of the abundant pollen and nectar to swell their numbers, grow new queens and swarm.

John and Howard, protected top to toe in their bee suits, have successfully homed many of the swarms, settling them into comfortable new hives. This includes six from an over-wintered hive which was showing encouraging signs of resistance to the deadly parasitic varroa mite and did not need treating. Hopefully these bees' behaviour in detecting and dealing with infected cells may transfer to the new colonies.

Smiling faces watched videos of the intricate figure-of-eight waggle dance which tells other bees (even in the darkness of the hive) the distance and direction of good foraging, based on the position of the sun. Later, fingers were pointed in delight at the red-marked and long-tailed two-year-old queen bee included with the panels from one of Juniper Hall's hives that Howard and John had brought in from the grounds, in a special (sealed) display case.

A further pleasing anecdote was how the bees are often seen drinking from the dipping pond which was funded by the Friends in 2022. The meeting was followed by the customary lunch of soup, sandwiches and fruit.

Following our AGM in June the next big event is the Festival of Nature at the Hall on Saturday 19<sup>th</sup> July – see the flier. You can book a place for this event either by using the QR code on the flier or contacting the Friends using the email address below.

The next Friends meeting is on Thursday 9<sup>th</sup> October, 11 for 11.30 am when Celia Bradford, one of the garden volunteers, will give a talk entitled 'History of Juniper Hall Grounds'. Celia will talk about how these historical grounds have changed over the years, illustrated by old photographs, and how they are managed now.

All morning meetings are followed by lunch which is included in the charge of £10 for members and £15 for non members. The bulk of these charges go into the fund which the Friends use to support Juniper Hall by purchasing items to enhance the experience of the children attending courses. New Members would be very welcome and you can find out all about the



Friends of Juniper Hall's activities and how to become a member by visiting our website [friendsofjuniperhall.org](http://friendsofjuniperhall.org) or contacting us via email on [friendsofjuniperhall@gmail.com](mailto:friendsofjuniperhall@gmail.com)

Left: members inspecting bee panels;  
right: queen bee



Mickleham and Westhumble Horticultural Society

## Village Show

Saturday 13<sup>th</sup> September 2.30 - 4.30 pm



## CARPET REVIVAL REVIVING CARPETS & UPHOLSTERY IN SURREY

We clean to a professional standard using eco-friendly chemicals and the latest equipment.

Offering a thorough survey, clean and customer satisfaction. Certified and insured.

Call 01306 740035 / 07747 122128  
or visit [www.carpetrevival.co.uk](http://www.carpetrevival.co.uk)  
to book a free home visit/quotation

Quote Code  
'CR110'  
and save 10%  
off your booking

## STEVE LAWRENCE BOILERS & HEATING

BOILER INSTALLATION, MAINTENANCE AND REPAIR

BASED IN MICKLEHAM LOCAL REFERENCES

30+ YEARS' EXPERIENCE

07760 266718



## Vivien Cresswell Made-to-measure Soft Furnishings

Curtains Roman Blinds Cushions



Extensive range  
of fabrics

01737 843858

[info@cresswellscurtains.co.uk](mailto:info@cresswellscurtains.co.uk)

[www.vivien.cresswell.co.uk](http://www.vivien.cresswell.co.uk)

## Primal Method Personal Training



### Steven Cook

NASM CPT, FRCms

*Mobility + strength training for a stronger body,  
less pain, and greater freedom of movement*

First session FREE!

Email: [smarttraining32@gmail.com](mailto:smarttraining32@gmail.com)

## Domestic Appliance Repairs

30 years' experience repairing and installing  
all gas and electric domestic appliances



- Cookers, Microwaves
- Dishwashers
- Washing machines
- Fridges / Freezers
- Water coolers
- Coffee machines
- Tumble dryers

Contact: Andy 07895 719 706  
[andy@kirksdomestics.co.uk](mailto:andy@kirksdomestics.co.uk)



## Phil's Mowing Dorking

Regular Lawn Mowing  
General Garden Maintenance  
Lawn Care & turfing  
Hedge Trimming  
Pressure Washing



[phil@philsmowingdorking.co.uk](mailto:phil@philsmowingdorking.co.uk)

07905 160 765

## Morning Star Cottage

Restronguet, Cornwall

*Escape to a tranquil hideaway at water's-edge  
with stunning creek views*

Very comfortable former fisherman's cottage

Fully refurbished, centrally heated and with super fast broadband

- Sleeps 6, dogs welcome • wood burner • 2 bathrooms (1 en-suite)
- Private jetty and mooring
- Hire a boat/kayaks/paddle boards from the cottage
- 5 minutes' walk to the 13<sup>th</sup> century Pandora Inn



Contact Sarah Penry for more information: [sarahpenry@hotmail.com](mailto:sarahpenry@hotmail.com) 07902 758070  
<http://www.cornishholidaycottages.com/property/morning-star/>



After narrowly losing the local Derby against Dorking, what a day we had for our second game. The ground looked amazing, thank you RGS Surrey Hills, and the sun was out for the annual game against Banstead, in memory of the late Paul Brown.

We batted first, and Chris and Justin set us well with a fantastic opening partnership of 50. Chris was eventually bowled by a jaffa, and Michel followed quickly thereafter, after belting a few to the boundary. Patrick then entered the fray, and held his nerve as Justin continued on his merry way. After Patrick's stoic innings came to an end, Giles supported Justin. They both played superbly, taking us past 100. Peter provided brief support after Giles was dismissed, and Bertie was unlucky to be caught, a great catch. Our innings was faltering, but in stepped Ali and played some amazing cricket shots;



together with Justin, we were heading towards a fine score. Justin ended on 112 not out and we posted 196!

It was time for tea and, thanks to Annie, all of our tea kit was clean. Bertie's Mum baked a cricket cake and Peter's homemade sausage rolls were a winner.

We started well in defence of our score, with Kevin taking three wickets and Bertie two. It was a day when we took our catches (amazing). Will took a blinder in the slips and Kevin, Michel and Ali good ones too. The star of the day however was Bertie. He managed

to catch a screamer off Peter's bowling. It is hard to describe how amazing the catch was, one-handed backwards over his head, and how important it was in terms of the game. Chris said it was the best catch he has seen since playing for MCC. The game was on a knife-edge right until the end when Michel's three wickets finished it off for us.

Banstead fell 30 runs short, as we bowled them out in the 35<sup>th</sup> over. A great win, which sets us up fantastically for the rest of the season.

## The Village Hall Mickleham The Chairman's Report 2024

The Trustees have pleasure in presenting their report and accounts for the year ending 31<sup>st</sup> December 2024. 2024 continued the steady recovery seen in 2023, with a return of confidence in both Regular and One-off Bookings, and new Regular bookings for both Pilates and Quilters. We also benefitted from the income derived from the Hall being used for Two Elections. A further Regular Keep Fit Class is due to start in January 2025.

We carried out all the many usual maintenance activities throughout the year. The installation of an Infra-red heating system in 2023 has proved effective and enabled us to dispense with the unsightly wall radiators.

The on-line booking facility, which we continue to enhance, has speeded up the booking process, makes information available to trustees and reduces the amount of paper we use.

On the costs side the fixed 3-year tariff in respect of both gas and electricity, negotiated in October 2023, provides

us with some certainty during a period of volatility in the Energy Market. This together with the contract on the hall insurance helps in the budgeting of two of our major costs going forward. Towards the end of the year, we had to replace the kitchen water boiler, the previous one having delivered many years of service.

I wish to express the sincerest thanks, of both myself and the trustees, to Ben Tatham who stood down as Chairman, after eight years, in May 2024. Ben has overseen significant changes and improvements to the hall and guided us through the difficulties caused by Covid19. We are very fortunate that Ben has agreed to stay on as a trustee of our village hall.

If you wish to hire a venue for a family event or other activity, please come and have a look at our hall. Just call our Bookings Manager, Deanna Darnell, on 07790 941601 to arrange a visit.

David Kennington  
[davidkennington144@gmail.com](mailto:davidkennington144@gmail.com)

## Mickleham Almshouses Charity Trustee Opportunity

Do you have a few spare hours every month and would you like to give something back to your community?

Would you like to volunteer and support an important and historic almshouse charity?

Mickleham Almshouses Charity provides low-cost community housing that is held in trust for local people who are in housing need.

We are particularly looking for volunteers with various skills including knowledge of the charity sector and legislation and maintenance/electrical systems. However, please contact us if you are interested. The charity meets every ten weeks, and the role is hands-on.

Please email  
[trevorhaylett9@gmail.com](mailto:trevorhaylett9@gmail.com)



## All your annoying & odd jobs fixed fast



**Are you:** struggling to get your odd jobs done?  
lacking the necessary skills?  
struggling to find the time?  
lacking the correct tools?  
struggling to find a reliable person?

Mickleham based  
**07939 131593**  
help@toolboxtony.co.uk

see [toolboxtony.co.uk](http://toolboxtony.co.uk) for more information on services offered

Plumbing
 Heating
 Boilers

Servicing
 Fault Finding
 Gas Work

Call 07716 269620 email [luke@ljcplumbingheating.co.uk](mailto:luke@ljcplumbingheating.co.uk)

### Get IT Fixed, Get IT Connected

Expert Repair & Maintenance



Brockham based. No call out charges. Fully transparent quotations with no hidden costs. We make technology work for you.

Call us now on  
**01737 845980**

ChalkHill Systems  
[www.chalkhillsystems.co.uk](http://www.chalkhillsystems.co.uk)

### DORKING PEST CONTROL SERVICES

Local Authority Approved Contractors

**Our services include: wasps, bee swarms, hornets, bed bugs, fleas, flies, ants, cockroaches, rats, mice, squirrels, rabbits, moles, foxes and deer**

**EXPERTS IN PEST CONTROL THROUGHOUT SURREY**

01306 743001 Ivor: 07710 117491 Chris: 07971 519415  
Family-run business with over 30 years' experience

[www.dorkingpestcontrol.com](http://www.dorkingpestcontrol.com)

## remedial roofing

*For people with roof issues and deficiencies*

- New roofs – slate & tiled roof specialists
- All roof repairs, moss removal & gutter clearance
- Flat roofs, traditional felt & GRP fibreglass
- New uPVC Fascia, soffit & guttering

Obtain an up-to-date report of remedial roofing on [www.checkatrade.com](http://www.checkatrade.com)



**ALL WORK GUARANTEED**  
Call us today for a FREE quotation on:  
01306 304736 | 07852 833802

info@remedialroofing.co.uk [www.remedialroofing.co.uk](http://www.remedialroofing.co.uk)



## District Councillor Update for July 2025

*Mickleham and Westhumble have received updates from the Parish Council and the Residents Association respectively on the prospective changes to the structure of local government. However, some details have remained uncertain. What follows is an article written by our three district councillors (they sit on Mole Valley District Council) for the Westcott Parish Magazine and they have agreed that MPM might also use the article. It provides an up-to-date guide to the timetable from here to the implementation of whatever changes are the outcome.*

It has been a busy few months at Mole Valley District Council, and we wanted to share some key updates, including potential changes that could reshape local government across Surrey.

We are pleased to announce that Mole Valley's Local Plan has been shortlisted for the Royal Town Planning Institute's Awards for Planning Excellence. Among the many features receiving national recognition are two important commitments:

- \* A requirement that all new developments deliver a net gain in biodiversity, supporting and enhancing our natural surroundings.
- \* A commitment that at least 40% of new homes be affordable, helping local families, first-time buyers, and younger residents put down roots in areas like Westcott.

The biggest change on the horizon is the Government's plan for Local Government Reorganisation (LGR). Currently, Surrey has a two-tier system: Surrey County Council handles highways, education, and social care, while Mole Valley District Council looks after housing, planning, waste collection and leisure.

Under LGR, these services would be merged into new unitary authorities — single councils delivering all local government functions. The aim is to reduce duplication, improve efficiency, and open the door to greater local powers.

In February, county council elections

were cancelled, and councils across Surrey were asked to submit their proposals for how the new system should work.

At the council meeting in May, Mole Valley supported the two-unitary proposal, where Surrey would be divided into East and West. Under this proposal, Mole Valley would join Elmbridge, Epsom & Ewell, Reigate & Banstead and Tandridge to form an East Surrey authority.

Of the options presented, we believe this provides a balance between being large enough to streamline services and finances, while retaining some locality and sense of place to remain responsive. Critically, the model meets all the criteria set out by the government and ensures each division would be represented by at least two councillors.

Of course, reorganisation brings challenges. The transition will be complex and costly, and although long-term savings are expected, financial uncertainty remains, especially with the government's new funding model potentially reducing central support.

That is why we have written to the Minister of State, Jim McMahon MP, and to Surrey County Council, supporting the two-unitary approach while pushing for key safeguards:

- \* Three councillors per division.
- \* The option to create new town or parish councils in areas like Westcott.
- \* Protection for valued community assets including libraries, village halls, and leisure centres.

\* Flexibility for new councils to offer enhanced services where residents want them.

\* Continued focus on climate commitments.

\* A fair funding settlement including writing off Woking and Spelthorne's debts, which would otherwise burden taxpayers across both new authorities.

Here in Westcott, the question of parish councils is especially relevant. As an unparished area, it may soon be

included in a Community Governance Review to explore forming new town or parish councils. In other parts of the country, these have played a vital role in preserving and delivering local services, particularly where larger councils have had to scale back.

That said, several questions remain:

- \* How will smaller parish councils be supported financially and administratively?
- \* Will services like leisure centres and public toilets continue to receive funding?
- \* What happens if the Government does not write off existing council debts?
- \* How will residents' views be gathered and reflected?
- \* And what shape will local democracy take under the new system?

LGR Timeline at a glance:

Dec 2024 – Government publishes Devolution White Paper

Feb 2025 – County Council elections cancelled

May 2025 – Proposals for new unitaries submitted

Summer–Autumn 2025 – Government reviews proposals

Early 2026 – Shadow Authorities formed

May 2026 – Elections to new councils

April 2027 – New authorities take full control

Mole Valley continues to serve residents while preparing for this once-in-a-generation reform.

With warmest wishes  
Abbi Magesh, Chris Buddleigh,  
Leah Mursaleen-Plank







### Your property matters....

Garbett & Partners offer a bespoke estate agency practice specialising throughout Surrey and the Home Counties.

*A discreet personal service whether you are considering selling or purchasing.*

tim@garbett.partners - 07831 576616  
suzie@garbett.partners - 07979 876380

www.garbett.partners



Joseph

## De Decorators

- Painting • Decorating • Wallpapering • Plastering • Tiling
- Mickleham based 40 years' experience  
01372 372331 07973 358 932

### Garden & Landscaping Services

Lawn mowing • Hedge cutting • Leaf clearance  
Garden maintenance • Planting • Fencing  
Gates • Astro Turf installation and much more...



Contact Us Today  
**07832 139475**

E: sdgroundmaintenance@gmail.com  
W: www.sdgroundmaintenance.co.uk



### Mickleham based Town Planning Consultancy

Family business winning planning permissions for over 30 years

T: 01372 665015 M: 07767 477978  
W: Horneassociates.com  
E: info@horneassociates.com

## ALEXANDER HOME RENOVATIONS

### ELECTRICIAN

- City & Guilds Qualified & Registered with NICEIC
- Household, Garage & Garden Building rewires
- Fuseboard Consumer Unit upgrades and repairs
- Socket Outlets, Indoor & Outdoor Lighting

### BATHROOM & KITCHEN INSTALLER

- Complete Design and Layout Consultations
- All Plumbing & Part P Bathroom Electrical Alterations
- Wall & Floor Tiling, Decorating & Plastering
- All Carpentry & Associated Small Building Works



MICKLEHAM-BASED • FULL PUBLIC LIABILITY INSURANCE • ALL WORKS GUARANTEED • LOCAL REFERENCES AVAILABLE  
Contact Mark for free estimates and advice M: 07831 401 439 LANDLINE: 01372 372 780 E: mark@ahrenovations.co.uk

## Intrinsic Curiosity

Something that we do not need to plan for is the intrinsic curiosity of children. Young children are natural explorers, constantly engaging with their surroundings to make sense of the world. One of the most fascinating aspects of the role of nursery practitioners is to observe how children begin to understand how things work. Play is central to this discovery process. Through play, children test theories and gain a deeper understanding of physical properties and problem-solving. For example, building with construction toys helps them learn about balance and gravity, while pouring water from one container to another introduces basic principles of volume and flow. While we as adults may have been through this discovery process numerous times, the awe and wonder as a child learns and explores, is a rewarding element of our job. Sometimes we are on that

learning journey together, children may ask questions that we do not know the answer too, Google (other search engines are available) can be quite helpful especially when such questions are based on mechanics, processes and systems. Not every adult has been on a canal boat to learn how a lock works. So our 'aqua play' resource has recently been hands-on teaching for some of the adults and the children.

On another note, if you are out and about in Mickleham and Westhumble, please keep a look out for our gingerbread man! Now lost because he ran, ran, ran, as fast as he can! Last spotted on his way to the river, being chased by a little old woman, a little old man, a cow and a horse...

Hilary Budd



## Dorking Museum Summer Family Activities

### FAMILY ACTIVITIES AT DORKING LIBRARY:

In conjunction with Dorking Library, on Saturday 5<sup>th</sup> July, 10 am-2 pm, Create a Blue Plaque for Yourself!  
Thursday 7<sup>th</sup> August, 10 am-2 pm, for Dinosaur Week, Dinosaurs Briefing Room includes spectacular models

from the 'Hidden in Stone' exhibition by Southampton University. Free events, materials provided, aimed at 4-11-year-olds.

DORKING HALLS FAMILY FUN DAY: On Sunday 20<sup>th</sup> July, 11 am-4 pm. Meadowbank is the venue for this family-friendly annual event.



# INSPIRATIONAL Box Hill School

FOR GIRLS AND BOYS AGED 11-18

We offer a variety of  
programmes including  
GCSE, International  
Baccalaureate, A Levels



LEARN  
MORE



*Come and visit Silvermere Softplay Centre, where the joy and benefits of play are exceeded!*

An accessible and inclusive space for children and young people to unleash their natural energy through movement, play, and connection with others



- Soft play sessions
- Pre-school play
- Parties

*Our warm and welcoming café is the perfect space for everyone to relax and connect.*

For more info and booking: [www.silvermere-softplay.co.uk](http://www.silvermere-softplay.co.uk)  
Proprietors: Katie and Michael of School Lane, Mickleham



## ST MICHAEL'S COMMUNITY NURSERY MICKLEHAM VILLAGE HALL DELL CLOSE RH5 6EE

Weekdays 9.15 am - 2.45 pm (term time)

Mornings or longer sessions available

**Cosy, well-resourced, pre-school nursery for 2-5 year olds.**

**Superb garden and forest school**

**Government funding accepted**

Contact us for more information about admissions  
01372 361021 [www.stmichaelscommunitynursery.co.uk](http://www.stmichaelscommunitynursery.co.uk)



## St Michael's Church Community Group Food Bank Collection

We welcome items for adults, children and infants including:

- non-perishable food
- laundry and cleaning supplies
- personal hygiene products

### LOCAL COLLECTION POINTS

#### MICKLEHAM

Garden Corner off Old London Road  
Mary Banfield 01372 373912

#### WESTHUMBLE

St Anthony Pilgrims Way  
Sue Tatham 01306 882547

The Stepping Stones  
Westhumble Street



Also items may be brought to Coffee Mornings at Westhumble Chapel and St Michael's Church on Sunday mornings

To make monetary donations go to: <https://dorkingarea.foodbank.org.uk/give-help/donate-money/>

CHECK THE COMMUNITY WHATSAPP EACH WEEK FOR ITEMS CURRENTLY IN SHORT SUPPLY

## Looking Back

As we are now entering the last stage of the academic year, we always look back on the year and wonder what the new year will bring. It really does not seem like five minutes ago that we were writing about events in September and now we are looking forward to summer fun.

As always, this time of year brings mixed emotions. We are starting to make plans for our new intake looking forwards to welcoming the new (or existing) families to St Michael's and thinking of ways to help support the children's transition for the children into our school community. However we are aware that we will also be saying 'goodbye' to our Year 2 children, all of whom we have seen flourish and grow over the past three years. We know it is hard to say 'bye', but we also know that the time has come to allow the children to spread their wings and explore pastures new (we also know that they often come back to see us on INSET days).

The academic year is nearly over, but we have still managed to cram a lot of things into a short space of time. Like a lot of schools, we celebrated VE day. We spent the morning, colouring Union Jacks, making cheese straws and learning about why the day is important. In the afternoon we had a tea party (all dressed up in our red, white and blue clothes).

Even though we are a very small school, St Michael's thrives on giving children as many sporting opportunities as we can. We are part of a Dorking sports network group and through this we are often invited to attend different activities alongside other smaller schools. A few weeks ago, 10 of our Year 1 and 2 children attended a gymnastics festival, where they learnt different skills and were shown how to make a small sequence of gymnastics movements. This was hosted by North Downs school and everyone said how our children showed respect for others and how much they enjoyed the afternoon ('this is the best day of my life' was one quote

that was heard). We also receive a sports grant from the government and through this money, we participated in a skipping workshop, where all the children were given their own rope and we were taught different skipping skills. This proved to be a big hit and we will be looking into it again next year!

SIAMS\*

I am delighted to share the wonderful news of our recent SIAMS report, which highlights the strong sense of community, inspiring worship, and the nurturing ethos that permeates our school. Our hard work has been instrumental in



creating an environment where every child feels valued and supported. The report reflects our commitment to embedding our Christian values into daily practice, fostering the children's spiritual growth and inspiring them to thrive academically and emotionally.

A link to the report can be found under Policies – St Michaels Infant School Mickleham, Dorking on our website:

<https://www.stmichaels-dorking.surrey.sch.uk/>

Nicola Cleather

\* Statutory Inspection of Anglican and Methodist Schools





# Cryptic Crossword



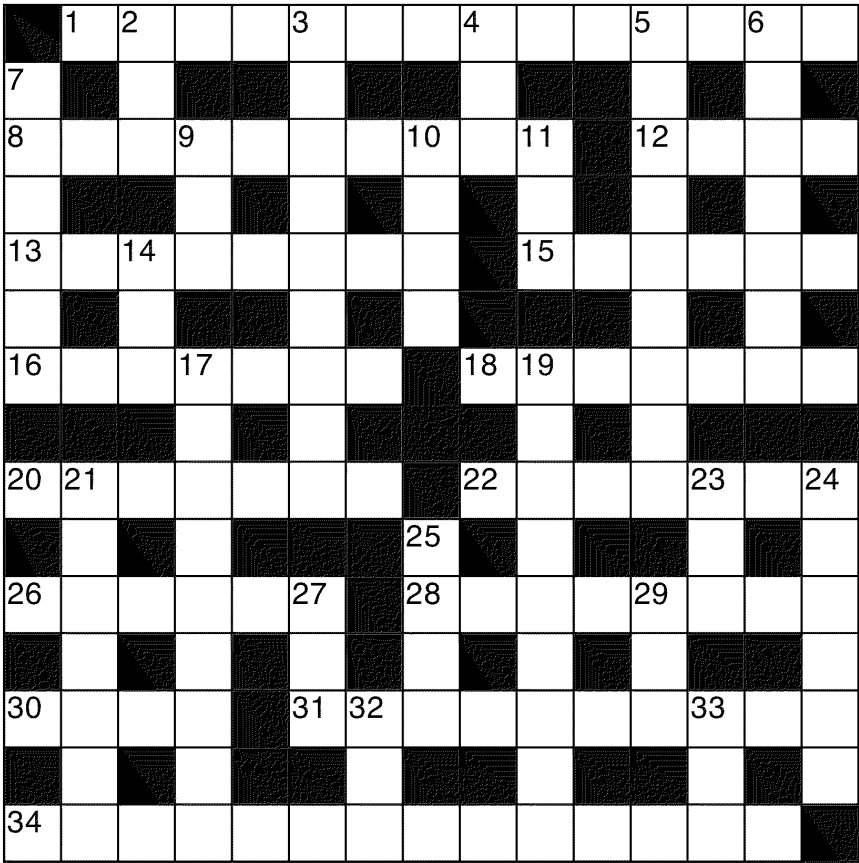
Here is another of the crosswords compiled by Richard Roberts Miller.

Across

- 1 A wigwam or tepee perhaps in the land of the free? (4,2,3,5)
- 8 Ten campers ordered off The Whites (10)
- 12 Fruit a thug likes, to some extent (4)
- 13 Newcomers awake and get sharp in boat (8)
- 15 Exist as a deer, or just its bottom? (6)
- 16 What traditional dads are expected to do - in silence (4,3)
- 18 Flies off at sea with little Violet (7)
- 20 Sailor at party with men from corporation (7)
- 22 Prattle second-rate froth (7)
- 26 Disappear like a small truck? (6)
- 28 Between flights on D-Day (8)
- 30 Old tool he had zealously preserved (4)
- 31 Parasite in pants? They are more concerned with satisfying bureaucracy than with actual merit (3-7)
- 34 Ivy, after soup the Spanish served, became a casual loafer (7,7)

Down

- 2 Imaginary creature from Tolkien - or computer games (3)
- 3 Convenient colleague with first rate air (9)



- 4 Member of tribe reportedly steered by a tiller (3)
- 5 Exterior rendering of a very poor repertory company? (9)
- 6 Virginia and Lancelot briefly teamed up to make decorative drapery (7)
- 7 Expose as lower class rubbish (6)
- 9 Feat Ascot achieved oddly (3)
- 10 Simple type of chair for a midshipman (4)
- 11 Vessel featured in paintings by George Stubbs (3)
- 14 Haggard female in galoshes? (3)
- 17 Far-sighted to supply the New Testament (9)
- 19 Lent in vain to Eric's first sweetheart (9)
- 21 Second rate country the queen finds less exciting (7)
- 23 A layer of the North Downs (3)
- 24 Are sisters able to hold counter? (6)
- 25 Reported small spots in lead (4)
- 27 Male ferret on the range (3)
- 29 Part of their kilts may irritate (3)
- 32 Bird even Boswell admired (3)
- 33 Stretch out in the Kenya game reserve (3)

RR-M

Solution in the next issue

Photographer Ben Tatham



EST. ——— *The* ——— XVI

RUNNING  
· HORSES ·

You are sure of a warm welcome at this historic 16th century inn. Join us daily for lunch and dinner and on a Sunday bring the whole family to us for our delicious award winning Sunday roast.

We have 7 charming en-suite rooms, updated with modern facilities, named after different racecourses.

Opening Hours:  
Mon-Sat 12pm-11pm / Sun 12pm-10pm

Old London Road, Mickleham, Dorking, RH5 6DU

01372 388 422

bookings@therunninghorses.co.uk

J S Wilson

Mickleham

Carpentry & Building  
Services

Extensions ~ Conversions  
Refurbishments ~ Property Maintenance  
Fully guaranteed ~ Fully insured  
*One call WILL solve it all*

Contact Jason on: 07761 926684 or 01372 379359  
jswilsonconstruction@gmail.com

RESIDENTIAL • COMMERCIAL  
AGRICULTURAL • SCHOOLS • ACOUSTIC  
HOARDING • GATES • SECURITY

RICHARDSON & BRADS FENCING LTD  
T: 01306 640 143 - 01483 414 745  
E: INFO@RBFENCINGLTD.CO.UK  
W: WWW.RBFENCINGLTD.CO.UK  
A: 168 SOUTH STREET, DORKING, SURREY, RH4 2ES  
UNIT 45 MARTLANDS INDUSTRIAL ESTATE, SMARTS HEATH LANE, MAYFORD, GU22 0RQ



Helping older people to live well in their own homes since 2010



- ♦ Award winning care ♦ Companionship services
- ♦ Home help services ♦ Personal care services
- ♦ Highly trained Care Professionals

If someone in your family needs a little help please contact us on  
**01372 741544**



[www.homeinstead.co.uk/epsom](http://www.homeinstead.co.uk/epsom)  
Email: [simon.burrowes@homeinstead.co.uk](mailto:simon.burrowes@homeinstead.co.uk)



Each Home Instead franchise is independently owned and operated. Copyright © Home Instead® 2022.



**YOUR LOCAL  
PROFESSIONAL  
TREE HEALTH CARE  
SPECIALISTS**

Felling • Pruning • Stump Removal  
Planting • Woodchip • Air Spade Services  
Consultancy

**Call us on 01306 741800**

[office@treeline.co.uk](mailto:office@treeline.co.uk)  
[www.treeline.co.uk](http://www.treeline.co.uk)



**WELL-SEASONED LOGS  
FREE LOCAL DELIVERY**

**npd**  
REFURBISHMENTS

**Bathrooms • Plastering • Tiling • Kitchens**



We can offer specialist services or complete project management including inspirational design ideas. No job is too big or too small.

What you can expect from NPD Refurbishments:

- Close attention to detail and true craftsmanship with trusted testimonials
- Use of high-quality materials yet working with suppliers to obtain the best possible prices
- Use qualified and reliable contractors where necessary
- Unlimited options and flexibility to allow changes throughout the building process
- Help and advice in selecting amenities and options you will be happy with
- Constant communication to keep aware of project status
- Down to earth approach but high level of workmanship
- A tidy job environment to minimise disruption
- An open, comprehensive and honest quote

01403 738103 07917 457286  
[npdrefurbishments.com](http://npdrefurbishments.com)

## Need help with your accounts?

Running a business needs time and energy – don't waste your time working on your accounts when you can work on your business instead!

At a4c we provide fixed fee accountancy solutions with friendly support throughout the year. Services include accounts, tax returns, VAT, payroll, book-keeping etc.

Friendly, approachable and local to Dorking – we enjoy getting to know our clients so call us today for a no obligation chat.

**We LOVE numbers so YOU don't have to!**

**01737 652852**  
[esther@a4cgroup.co.uk](mailto:esther@a4cgroup.co.uk)  
[www.a4cgroup.co.uk](http://www.a4cgroup.co.uk)

