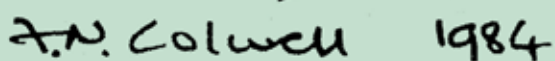


A community magazine for Mickleham and Westhumble



July/August 2024



**SURREY HILLS
HEATING LTD**

**DOMESTIC BOILER SERVICING
AND BREAKDOWN**

OIL, LPG & GAS BOILERS

Call Dathan on: 07944 575970
sales@surreyhillsh heating.co.uk
www.surreyhillsh heating.co.uk



Bullimores



Accountants for Life
Tax • Accounts • Probate
Inheritance Tax &
Executorship

T: 01306 880880
E: partners@bullimores.co.uk
W: www.bullimores.co.uk

Bullimores LLP licensed to carry out the reserved legal activity
of non-contentious probate in England & Wales by the ICAEW



Stepping Stones

MORE THAN JUST A PUB

CAFÉ-BAR

Serving Morning Coffee and Afternoon Teas

RESTAURANT & ALFRESCO DINING

Serving fresh classic-style pub favourites

Live music events Take-aways available

Available for functions / private parties / celebrations / family gatherings

Dog friendly

**Last Monday night of the
month from 7.30 pm**

01306 889932
steppingstonespub@gmail.com
www.steppingstonesdorking.co.uk

*Please check website for up-to-date menus
events and current opening times*



Sixth Generation Family Business

24-hour Service, Funeral Plans, Free Advice on all Related Matters,

Free Parking On Site, Memorial Masonry

Trellis House, 190 South Street, Dorking, Surrey, RH4 2ES

01306 882266

office@sherlockandsons.co.uk

www.sherlockandsons.co.uk



MICKLEHAM PARISH Magazine

July/August
2024

Mickleham
Parish
Magazine

A community magazine for
Mickleham and Westhumble
published under the auspices
of Mickleham PCC with an
independent editorial panel.

The magazine is published at the
beginning of each month except
January and August.

COPY DEADLINE

SEPTEMBER MAGAZINE

Sunday
11th August

send to:

editor@micklehammag.co.uk

Co-editors

Charlotte Daruwalla

07933 300744

Jan Budleigh

07780 976301

Contributions in any form
are welcome as are good
quality photographs. There
is no charge for advertising
local charity and community
events. However the editors
reserve the right to shorten
omit or reformat articles
submitted for publication
depending on space.



Printed by Holbrooks Printers
Portsmouth

Mickleham Rectory

Dear friends

Summer brings warmth and joyful occasions, including weddings and the Olympics. An odd pairing perhaps but both are reminders of commitment. Two people in love committing to each other in a faithful, mutually supportive and loving relationship for the rest of their lives; and athletes and sports people committed to regular training and various sacrifices for months or years. Both weddings and the Olympics offer the hope of joy, celebration and reward. Commitment is worthwhile!

It seems increasingly hard to find volunteers who will commit for the long term to do the regular tasks. Thankfully many people do volunteer for one-off events, which can be rewarding and enjoyable. Those who helped on the day of the village Coronation Tea party found it to be so. But the event would not have been possible without a planning group who did a lot beforehand. We celebrated together afterwards because we had the satisfaction and reward of our committed team efforts bringing happiness to others. I am hoping the village Summer Fair will be enjoyable for all, especially for the volunteers on the day. Do volunteer to help please. I also hope the planning team, who have committed to making it work for several months, will find a lot of satisfaction and reward from their efforts.

We are blessed by local people who do commit to long-term involvement in various ways as they make both church and community events possible. I am very grateful for all who serve on local councils, the church parochial council, the residents groups, those who run our clubs and societies, the coffee mornings, afternoon teas, and all on the church rotas or regularly help in some way. I am particularly grateful to the small but committed team who have worked on the Eco Church project and been rewarded by the church getting a silver award of which we are all proud. They and all who supported them have cause to celebrate. They are now committed to going for gold!

Jesus is a great example of someone whose commitment to serve God and people was wholehearted and sacrificial. He asked those who would follow him two thousand years ago to do the same. The first disciples found great fulfilment in the tasks that they were given and despite many obstacles and difficulties they found joy in serving God and people. I believe we find fulfilment in living purposeful lives and great satisfaction in achieving things together. If you are able, seize opportunities to commit to a role or task. There are many local volunteering opportunities; you will know some I am sure: for instance the church is hoping to organise a crêche on Sunday mornings, we need a new churchwarden or deputy warden, The Eco group and church community group need volunteers to join the team.

The call to serve is for all, Christian or not. Regular, long-term commitment to serve the church or community makes a valuable contribution for our life together, for those in need. It honours God while giving fulfilment and satisfaction for us too.

God Bless.

Sandra


The Rev'd Dr Sandra Faccini, Parish Priest

St Michael's Church Services

10 am Sunday Services available on Zoom

Joining information for both Zoom and telephone users is available in Pews News Online each week. If you would like to join us by Zoom then contact Alison Wood for the codes or to ask her to include you on the emailing list for Pews News: admin@micklehamchurch.org.uk / phone 01372 376443. We hope as many of you as possible will be able to join us for worship. Please refer to Pews News Online for the latest information. If you missed any of the services or would like to revisit them all are available on the church YouTube channel: <https://youtube.com/channel/UCI4pbewCT91iZhcd0EjBIw>





Bible Study

No meetings in July or August

Monday Evening Group
Contact Amanda Wadsworth
aewadsworth@hotmail.com

Thursday Morning Group
Contact Alison Wood 01372 376443
alison.wood29@btinternet.com
ALL WELCOME TO EITHER GROUP



First Saturday of the month

Coffee Morning

Westhumble Chapel

No Chapel Coffee Morning in July
Next date: Saturday 3rd August

Come along between 10 am and noon
Coffee and cake £2 Free drinks for children
Everyone welcome
For further information call
Jonathan Blake 07787 126966



Tea @3

Monday 15th July
Host Sue Tatham
St Anthony, Pilgrims Way, Westhumble
No Tea@3 in August
If you can help with future events, please contact Julia
at siberrman@btinternet.com
ALL WELCOME TRANSPORT AVAILABLE

Tea and Cake

at St Michael's Church

On the fourth Sunday of the month
28th July
25th August
3pm-5pm



No Chapel Coffee Morning in July
The organisers will be busy helping at the Mickleham Village Summer Fair.
We hope you will all come along and say hello.

Social gatherings open to everyone

9-10 am at The Stepping Stones pub

WOMEN'S BREAKFAST
3RD SATURDAY OF THE MONTH
NEXT BREAKFAST
20TH JULY
Book with: Sue Tatham sue@thetatham.s

MEN'S BREAKFAST
NORMALLY 4TH SATURDAY OF THE MONTH
NEXT BREAKFAST
27ND JULY AND 24TH AUGUST
Book with: Andy Diamond
new email adiamond714@gmail.com



Messy Church

ON THURSDAY
Next date
15th September
No Messy Church in July or August

AT MICKLEHAM VILLAGE HALL
Delt Close, Mickleham RH5 5EE

3.15pm until 4.45pm

Join us for family fun, games, songs and bible stories

For 3-10 year-olds (must be accompanied by an adult)

ST MICHAEL'S AND ALL ANGELS CHURCH

Village Summer Fair Wheelbarrow of Wine

A reminder that we need bottles for the the raffle for a 'Wheelbarrow Full of Bottles', mostly of wine at the Village Summer Fair.

If you would like to contribute, please deliver to Garden Corner, Old London Rd, Mickleham or call 01372 373912 and we will collect.

Mary and John Banfield





Volunteers are needed for preparations before and on the day, please contact Helen Birchmore at contacthelenb-Mickleham@yahoo.com if you can help.

Mickleham Village Summer Fair

Saturday 6th July
2.00pm - 5.00pm
in the RECTORY GARDEN

Fun and something for everyone!

Programmes only £2 per family

Stalls

Local Produce

Refreshments

Sherree Valentine Daines Painting

Raffles

Children's Corner

All profits will be split between the Nursery, School, Playground and Church Clock Appeal

Do come along and join in the fun

Fair ticket/programmes have been on sale locally from 1st June for £2 per family

Volunteers needed for specific roles at the Summer Fair

Before the event:	Help,	On the day:
Selling programmes	spend an hour or two,	Serving teas
Sponsors	for the clock, the school and the nursery too	Clearing tables, washing up
Donations		Clearing up at the end of the day
Cakes/ Tray bakes		
Please contact Helen Birchmore at: Contacthelenb-Mickleham@yahoo.com		

Superb professional
cleaning of carpets
oriental rugs
upholstery curtains
and leather
Guardsman
anti-stain protection

- spot stain and odour removal
- leather cleaning specialists
- flame retarding
- dust mite reduction service
- all work fully insured & guaranteed

For a free no obligation quotation call today
Freephone 0808 144 9071
John Joannides 28 Bracken Close Bookham

Safeclean
The furnishing care specialists from GUARDSMAN



Pinehurst Rest Home

*We aim to provide an excellent service at
competitive rates supporting emotional physical
and social needs of our clients always respecting
and protecting their status as adults*

- Residential and 24-hour daycare
- Excellent cuisine
- Facilities for disabled: medic bath / lift
- Home doctor in attendance
- Single & sharing rooms
- Convalescent & short stays
- Lounge with TV & piano
- Separate dining room
- Physiotherapist chiropodist & hairdresser
- Entertainment: theatre visits / parties
& cabarets held on premises

**National Trust Road Box Hill
Mickleham Dorking Surrey RH5 6BY**
Telephone: 01306 889942 / 888253

Dorking Decorators
PROFESSIONAL
PAINTERS & DECORATORS

Established Local Family Business

- Over 20 years' experience
- Internal & External
- Commercial & Domestic
- Friendly, First Class Service
- Surrey / Sussex/ Greater London

**FREE ESTIMATES
01306 640418**
www.dorkingdecorators.co.uk
As approved by Checkatrade

51° NORTH

**SERVING DELICIOUS
BREAKFAST, BRUNCH
& LUNCH EVERYDAY**

GOOD TO KNOW:

- Full alcohol licence
- Venue available for private hire
- Outside catering service
- Boutique bedrooms available for short stays
- Walking routes to 51°North available
- Dogs welcome

LONDON RD, MICKLEHAM, RH5 6EH
FIFTYONE.DEGREESNORTH@YAHOO.COM | 01306 320455

SIMON HOOPER
For all your decorating needs...

Professional, friendly and speedy service at all times

Fully insured Insurance work
Exterior painting Interior decorating
Free quotes & advice Oil & Water-based products
Commercial/Domestic work Wallpaper hanging & removal

07947 135 376 0208 3978 962
www.slhdecoratingservices.com

Church receives Silver Eco Award

Many readers may have been following the progress of the Church of St Michael and All Angels in its efforts to become 'greener' or more eco-friendly. Following the submission of the Eco questionnaire on the extent to which St Michael's Church considers environmental matters to be worth prioritisation and more importantly what practical measures have been taken to prove their commitment, we are very pleased to be able to say that we have gone straight to the Silver Award.

The award is judged in five categories as mentioned in the certificate and we achieved silver overall, leapfrogging the bronze. Our push now will be to see if we can reach gold standard. Implementing the actions suggested in our Energy Audit and providing advice (where sought) on an eco-friendlier lifestyle will help us reach that target.

Sandra and the PCC were instrumental in initiating the Eco group and supporting their ideas throughout the last two years and we hope to set achievable goals over the next year or so to continue to make a difference in our

small area of the planet. There cannot be many churches who have been able to plant 300 metres of native hedgerow and install a new pond. The really welcome news aside from awards is the message from the church centrally that caring for the planet really matters

and that small actions taken at a local scale really do make a difference and are worth striving for. As someone once said 'Think globally, Act locally' - we hope to try to live up to that maxim.

Eco-Group

Heritage Open Days

Every September thousands of volunteers across England organise events to celebrate our history and culture.

This year's theme is 'Routes – Networks – Connections' and on Saturday 14th September the church will be open as usual for visitors, with special emphasis being placed on the churchyard. This area is often busy, particularly in the finer weather, with walkers following the route of the Box Hill Hike. There is much to see including the orchard, hedgerows and new seasonal pond

which are all the result of our amazing Eco-Group and a dedicated team of volunteers. Having recently been awarded an A Rocha Eco Church Silver Award, the parish of St Michael and All Angels joins a network of other churches looking to care for God's creation.

There is no charge for this event although any donations to the work of our Eco Group will be gratefully received. Light refreshments will be available from 10 am to 4 pm on the day.

Harvest Service

Harvest Service in church on Sunday 6th October at 11 am. Light lunch and a glass of wine after the service, coffee before.

More details to follow in the September magazine

ECO CHURCH
AN A ROCHA UK PROJECT

**Silver Eco Church
Award Certificate**

This is to certify that

**St Michael and All Angels Church,
Mickleham**

has won a Silver Eco Church Award in recognition of their efforts to care for God's earth in each of the following areas (as applicable):

Worship and Teaching
Management of Buildings and Land
Community and Global Engagement
Lifestyle

Signed *Andy Allen* Date **24 May 2024**
CEO, A Rocha UK

A ROCHA
WORK FOR LOVE'S SAKE

ecochurch.arocha.org.uk
arocha.org.uk

aid **THE UNITED METHODIST CHURCH** **tearfund** **The United Reformed Church** **UNITED REFORMED CHURCH**

Walk at Langley Vale Centenary Wood



This is great, why didn't I know about this before?' was the comment from one of the group on the recent visit to Centenary Wood, Langley Vale. So, what is it that is so great about this 641-acre woodland planted by the Woodland Trust, starting in 2014, to commemorate the First World War?

As you would expect there are trees, lots of them, over 180,000, but there are also flower-filled meadows, a community orchard and sculptures to discover. The site of the wood, on the edge of Epsom Downs, is no accident. This was part of the site of Tadworth Camp where raw recruits were trained in the basics of war such as digging trenches, learning to shoot, and how to protect themselves from gas attacks. One of the highlights is Regiment of Trees, a series of 12 carved sandstone statues of soldiers, representing some

of the 20,000 volunteers for the 2nd London Division inspected by Lord Kitchener in January 1915 on Epsom Downs. There was a blizzard on the day, with a foot of snow on the ground and at least one soldier died of hypothermia waiting for Lord Kitchener to arrive, who it is reported, stayed for five minutes before returning to London. Adjacent to these statues is the six-metre-tall wooden sculpture, Witness, consisting of 35 huge trunks of oak into which are carved excerpts from seven poems written by First World War poets including Wilfred Owen and Edward Thomas.

A short walk through the community orchard took us to Jutland Wood, where an avenue of 14 port-holed wooden sculptures is a stark reminder of the 14 British ships lost in this decisive battle and of the 6,097 British lives lost.

During our brief visit we only saw a small part of this new woodland but once you know about it, further visits to explore more and to watch the woodland evolve are very likely.

Roger Davis



Photos: Top left members of the group gathered in the carved Witness. Lines from WW1 poems are carved on the inside of the sculpture. Bottom left: one of the men on parade in his uniform. There is another sculpture of a soldier in civvies as he had not been issued a uniform yet. The sailor, middle, represents the sailors who took part in the battle of Jutland; and the prow-shaped carving one of the ships which also took part. Many sailors were lost.



Holiday Activities for Families

Family Activities: We continue to offer a programme of free family activities held at Dorking Library in St Martin's Walk. Materials are provided and children must be accompanied.

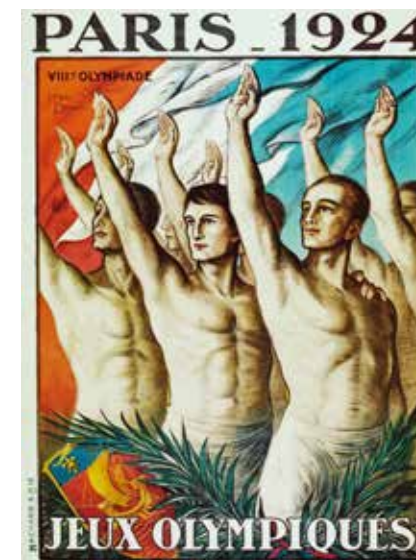
• Saturday 20th July, 10 am – 2 pm: Butterflies, Bees & Bugs (supported by The Arts Society Dorking): Celebrate Dorking's extraordinary insect heritage. Marvel at giant pull-apart insect models, have your face painted like a bee and create your own beautiful paper butterfly!

• Tuesday 30th July, 10 am – noon: Festival of Archaeology Come and join in a pretend archaeological castle dig. What do the items tell you about what might have happened at the castle?

• Saturday 17th August, 10 am – noon: National Playday Come and try games from the past, such as shove halfpenny.

Mickleham's Shooting Stars

Part 1 Olympic Glory



OLYMPIC GAMES, PARIS, 1924.
BRITISH SPORTING RIFLE TEAM



Standing :- M.F.J. O'Leary, M.F.A.E. Rogers, Major T. Ranken.
Sitting :- Lieut. G.W. Mackworth-Praed, Captain A.S. Perry,
Lieut. Colonel A. Whitty, D.S.O. Lieut. Colonel P. Name, V.C., D.S.O.
Lieut. Colonel J.C. Fawcett, C.B.E., M.C., V.D., A.D.C. (Captain of the Team).

"Winners of the Running Deer Team Doubles and Fourth in the Running Deer Team Singles. Lieutenant Mackworth-Praed gained second place in both the Running Deer Individual Doubles and Singles."

When this month's magazine arrives, the start of the Paris Olympics will be less than a month away. The previous Paris Olympics, held a century earlier in 1924, are probably best known in Britain for the success of the British sprinters Eric Liddell and Harold Abrahams, depicted in *Chariots of Fire*. Rather less famous is Mickleham's own Olympic star, Cyril Mackworth-Praed, who was born here in 1891. His father Robert was Lord of the Manor of Mickleham and during Cyril's early years the family lived at Mickleham Downs House, built by Robert's father Winthrop Mackworth-Praed*.

Cyril's shooting talent was evident at Eton, where he captained the team competing for the prestigious Ashburton Shield, awarded annually at the Public Schools' Meeting (now known as the Schools' Meeting) at Bisley. He was the most successful British marksman at the 1924 Olympics, winning one gold and two silver medals from the six events he entered. All three of his medals came from the Running Deer events, the gold from a team competition and the silvers from the individual ones. To those of us not familiar with shooting

Cyril is seated, second from left. The inscription reads 'Winners of the Running Deer Team Doubles and Fourth in the Running Deer Team Singles. Lieut Mackworth-Praed gained second place in both the Running Deer Individual Doubles and Singles'.

terminology, the name 'Running Deer' can conjure up some alarming images, but no live animals are involved! The target is merely in the shape of a deer with scoring zones marked on it. In 1924 the competitors were positioned 100 metres from the target, which was moved back and forth across an opening to allow about four seconds per shot.

A photograph of the eight members of the 1924 British Sporting Rifle Olympic Team hangs in the clubhouse of the British Sporting Rifle Club (BSRC) at Bisley. Six of the men were army officers and Lieutenant Cyril Mackworth-Praed is second from the left on the front row. He served with the Scots Guards in both World Wars and during WW2 was a weaponry instructor at the Commando Special Training Centre at Inverailort House in the Scottish Highlands, where the speed and accuracy of his shooting astonished the recruits. In 1952, aged 61, Cyril returned to Olympic shooting in Helsinki where he finished 11th in the individual Running Deer event.

In civilian life, his work as a stockbroker in the family firm of Francis & Praed helped fund his passion for ornithology, particularly the birds of Africa. He co-authored the first two volumes of *The Handbook of African Birds* with Claude Grant and wrote the remaining four himself after Grant's death. He also had a keen interest in wildfowl preservation and used a decoy on his property in Pembrokeshire to ring ducks in order to trace migratory routes. He made a short film of this in 1938, involving a stuffed fox and a well-trained dog, which can be seen on the British Film Institute website. Well ahead of his time, he started a duck adoption scheme where, for five shillings, you could adopt a ringed duck and be informed of its movements – no mean feat with the technology available. For his services to ornithology, Cyril was awarded the OBE in 1964. He died, aged 82, in 1974.

Judith Long

*Mickleham Downs House was demolished after WW2.

No Chapel Coffee Morning in July

The organisers will be busy helping at the Mickleham Village Summer Fair. We hope you will all come along and say hello.

Bliss Chimney Sweeps

All appliances swept

Traditional brush & rod Power sweeping
Pots & cowl fitted

Repointing, lead work & roof repairs

Fully insured Certificates issued

Free friendly advice

07739 638431

Blisschimneys@gmail.com

We provide the best
possible care for your feet



Book your appointment:
01372 454583 bookhampodiatry@gmail.com



Bookham
Chiropody & Podiatry Clinic
Diagnosis, Expert Treatment & Professional Care
for Your Feet

3 Hazel Parade, Penrose Road
Fetcham KT22 9PY
www.bookhampodiatry.co.uk

Your visiting

PHYSIOTHERAPIST

SUE JUDD MCSP HCPC

40 years of experience.

All your requirements for elderly
mobilisation & post-operative
rehabilitation.

07834 227 999 sue-judd@sky.com



EDE BROS

REMOVALS · STORAGE · SHIPPING

- Since 1926, Capel-based and family owned
- STRESS-FREE, local, national & worldwide
- Contact us for your **FREE** estimate...

01306 711293
edebros.co.uk

EDE BROS

REMOVALS · STORAGE · SHIPPING
Dorking, Surrey, England
01306 711293
www.edebros.co.uk

EDE BROS

REMOVALS · STORAGE · SHIPPING
Dorking, Surrey, England
01306 711293
www.edebros.co.uk

EDE BROS

REMOVALS · STORAGE · SHIPPING
Dorking, Surrey, England
01306 711293
www.edebros.co.uk

Home Counties Carers HELPING PEOPLE AT HOME
Live in Care

We are a close-knit family-run home care business
that is committed to providing friendly and reliable
carers, who genuinely care.

- Friendly, vetted trained and proven team
- 24/7 office support throughout the care package
- Experienced in caring for those with dementia

For more information and to arrange an assessment call us on
01483 224985 • 01737 354821
www.homecountiescarers.co.uk



P J Oliver & Son

Window cleaning
House & Garden Maintenance
Roof Repairs, Guttering
Painting & Decorating
Ground works, fencing, hedge cutting,
and tree work
Also Pest control

Call Phil on 07722 158 111
Email Oliviagarrett79@gmail.com

Mickleham & Westhumble Horticultural Society



homegrown flowers,
fruit, vegetables and
other impressive
produce

SUMMER SHOW

Saturday 13th July

Mickleham Village Hall

2.30 to 4.30 pm

Plant stall, Tool Sharpening,

Reigate Beekeepers and Harry's Pies

Teas and delicious cakes.

All welcome

Entries to Angela Gilchrist by 8 pm on Wednesday 10th July ar.gilchrist@btinternet.com



cooking, art,
photography and
children's entries

Page 9 of your Summer Show schedule
gives you Hints and Instructions. In
the July 2019 magazine, Judy Kinloch,
who is greatly missed by so many in our
community, offered some last-minute
tips for exhibitors, from which even the
most experienced among us can benefit.
Here are a few of them:

1. The golden rule must be to take notice
of the requirements of the schedule. Ten
raspberries means ten and it is so easy,
especially if you bring one extra in case of
accidents, to leave it on the plate as you

decide which to exhibit. Result = N/A (not
according to schedule) = they will not
be judged, however beautiful they are.

2. If you can, avoid entering flowers or
herbs with leaves that have holes or signs
of insect damage. You can always remove
the offending leaf or two if you need to.

3. Dimensions are crucial, both in
flower arranging and the size of your
courgettes as well as pots. Where these
are mentioned, you must keep to them.

4. Uniformity is to be aimed at where

possible, say when choosing potatoes.
It always seems to me that if I only
had to produce four, rather than five,
that I would have the perfect entry.
Nevertheless, we all have the same
problems so 'Nil desperandum'.

5. If you are unsure about your peas,
you can shine a torch through the pod
to see if it has its full complement. Leave
a little stalk on, similarly with beans.

The main thing is not to get stressed and
treat it all as a bit of good fun. Good luck!



The Garden Shed's

Tool Sharpening Day

with

Richard and his Assistants

Saturday 13th July

Bring your gardening tools to be sharpened during the

Mickleham & Westhumble

Horticultural Society Summer Show

Mickleham Village Hall, RH5 6EE

Sharpening service open from 10 am - 3 pm

Summer Show is on between 2.30 pm - 4.30 pm

Cost only £4 per item

Secateurs, shears, spades, forks, edging tools, hoes, loppers, axes,
scissors and kitchen knives can all be brought back to life.

See our website for details and prices www.gardenshed.club

The Garden Shed
Join us for a guided tour

Turners Hill
Dahlia Nursery

Thursday 29th August

Starting at 10.30 am

Cost £12 lunch not included

Optional lunch available at
Priory Farm Nursery

Self-drive - Car share where possible
See our website for details
www.gardenshed.club

Any Questions Pauline Davis
07759646353 or
paulinedavis33@icloud.com



YOUR LOCAL FARM SHOP
ON DENBIES WINE ESTATE

farm shop deli plant centre

Open daily 9.30 to 5.30 pm and Sundays 10 am to 5 pm

Local Produce, Seasonal Food, Plants and Flowers

Excellent selection of perennials, bedding plants, roses and vine plants

We deliver veg bags and more to the local area on Fridays
see www.vgfarmshop.com or email vegbag@vgfarmshop.com for details

LOCAL • NATURAL • ETHICAL 01306 880720 www.vgfarmshop.com

Consumer Protection Hints

In these days when everyone is trying to stretch their income, do be aware of a fantastically useful consumer protection law known in the trade as Section 75. S75 of the Consumer Credit Act 1974 essentially provides that if you pay for something by credit card and the product or service does not work, and the vendor will not or cannot compensate you, you can get your money back from the credit card bank. It's a bit more complicated than that, but that's the nub of it.

I have used this twice now. Once when I hired a car in Geneva and the snow chains broke. The rental company, far from apologising, charged me for a new set of chains. Amex refunded me immediately when I claimed under S75.

The second time I bought an electric bike from a Chinese company on Amazon, using an interest-free 3-year deal supplied by Barclays. Two bike batteries burned out in less than a year. This one was more complex, as Barclays initially refused to pay, saying that the loan in question was outside the scope of S75. I took them to the Financial Ombudsman Service (FOS) – another really useful, free consumer service – and got all my money back.

S75 is particularly useful when dealing with foreign companies or large organisations: good luck making a direct claim against a Swiss car rental company or a Chinese bike shop! Or when your supplier has gone bust.

To be covered for sure, always use a



credit card. Debit cards or charge cards do not qualify. Nor do most bank loans or buy now, pay later schemes such as Klarna. Paypal is a grey area, so I avoid it. The product or service must cost more than £100 and less than £30,000 and be a single transaction. Paying for two or more items on one credit card does not count. Keep all receipts and correspondence with the vendor.

Full details of S75 and the FOS can be found online, but I am happy to assist anyone who is trying to make a claim.

Will Dennis

Mickleham Choral Society's Tour De France

Well, you cannot accuse the Mickleham Choral Society of being unambitious. The choir's singing trip to France, culminating in a concert in the imposing L'Abbaye de St Ferme, was the brainchild of Musical Director, Juliet Hornby and was two years in the planning.

Over 45 singers plus guests and partners made their way, by all manner of means, to arrive at Juliet's family house just outside Monségur about an hour's drive south of Bordeaux on Thursday 23rd June. Everyone stayed either in Juliet's remarkable house or in an array of gites and apartments nearby. Friday was taken up by exploring the local town and market then down to the more serious matter of our first rehearsal in L' Abbaye. This is an imposing 13th century abbey. The church part, where we were to sing, was the size of a cathedral and it took a while for us to adapt to the reverberating acoustics when we are used to singing in Mickleham church. Then all back to Juliet's for a BBQ on the terrace and partying into the night with our own Tom Petty tribute band.

Saturday was concert day and most of the day was taken up by rehearsals. But then the big night had arrived. We all waited nervously in a side chapel as the church filled with local people, dignitaries and the daunting local Mayor, some no doubt wondering who this choir was from an obscure village in rural England. Most however, were aware largely because Juliet had staged many successful concerts in the L' Abbaye over the years. We still had a lot to live up to though.

We sang the haunting *Ubi Caritas* in the side chapel and then took our places on the altar steps. After four songs we sang the main feature of the programme, the beautiful Fauré *Requiem*. Juliet guided us through this mesmerising work supported by our acclaimed guest pianist, Gavin Mole, and professional soloists, soprano Laura Stephenson and baritone Simon Grant. It sounded especially wonderful in that church and the audience was transfixed.

After the interval, the second half was started by our very own concert classical guitarist Fiona Harrison playing *Romance Espagnol*. You could sense the audience had not expected to hear guitar playing of



this stellar standard. This was followed by a full programme of lighter music in several languages including Verdi's *Va Pensiero* in Italian, Brahms *Der Abend* in German and four French songs including *La Mer*. We did not see any grimacing, so I think we got away with our pronunciation. The enthusiastic audience applause meant we had to sing an encore, the moving *You Do Not Walk Alone*. What followed was a standing ovation with many, including the daunting Mayor, in tears.

The Mayor hosted a reception for us in an adjoining hall and then back to Juliet's house for pizzas and the after-gig party. What a night to remember! She also hosted a three-course Sunday lunch with twenty-year-old Bordeaux wine. But that did not stop us going back to base for a wonderful dinner again for 56 with entertainment and of course, lots more singing.

I doubt if there are many amateur choirs that could pull off this sort of event. Not just staging a successful concert in an unfamiliar venue in a different country but the skill, camaraderie, enthusiasm and organisational strengths needed to make it happen. Our thanks go to Juliet whose inspiration, energy and determination pushed all our boundaries. It was an experience none of us will ever forget.

Phil Randles



Photograph British Hedgehog Preservation Society



Hedgehogs have a very good public relations team. They tell us that hedgehogs are the nation's favourite wild creatures. That may well be true; they are very cute and feature in many children's books and stories, with attractive names

Hedgehogs - Can You Help?

like Fuzzypeg and Mrs Tiggy Winkle. With those prickles however they cannot be described as cuddly.

Sadly, they are in serious decline. Scientists fear that numbers may have fallen by 75% in rural areas. Conservationists and scientists are working to establish the full story of this decline with a view to finding ways of reversing it. A monitoring project using AI and trail cameras has begun recently, involving conservation charities and universities.

The cameras are triggered by movement and will be used on farms, woods and parks across England and Scotland. The pictures will first be filtered by technology but, and this is where you

can help, volunteers are being sought to monitor the remaining images to identify the animals. This information will then be used to provide a robust estimate of the hedgehog population.

If you can spare some time to help monitor the images as a 'citizen scientist' or 'spotter' you can find out more and join in at nhmp.co.uk

if you are lucky enough to have hedgehogs in your garden, they need to cover a distance in search of food at night. Our garden fences are becoming increasingly sealed off but we are encouraged to leave small holes about 15 cm (6 in) square to allow the little creatures to travel between gardens.



The Remarkable World of Trees Exhibition

From 28th May to 31st August

We are excited to announce that Dorking Library is hosting this fantastic exhibition, brought to us by The Surrey Tree Warden Network, the Tree Council, creator Kate Bretherton and Surrey Libraries.

The exhibition explores the world of trees from the soil they grow in, to the insects, birds, and animals that call them home. Visit and discover lots of ideas on how you can help trees, hedgerows and our whole environment.

The exhibition includes collaborative artwork, a photographic display, author talks and book signings, and interactive art and craft workshops and activities for children.



Butterflies, bees and bugs, children's craft event

Dorking Library with the Dorking Museum

Saturday 20th July, from 10 am to 2 pm.

Free event. No booking required.

A Confidential & Safe Space to Talk

Counselling • Mind & Body Healing
Reiki • Relax into Nature Sessions
Face to face/Online/Outdoors/Distance

Supporting you with compassion and
understanding through challenging times



Call Judith Cobby
on 01306 882229
or 07790 614448

www.healing-inspiration.co.uk

Rowlatt Garden Services

RGS

EST.1985

**Gardens large and small
we maintain them all**

All aspects of private and commercial garden
and estate maintenance landscaping undertaken
Fencing grass & hedge cutting

Telephone: 01737 841524 Mobile: 07887 838666
References available upon request

DORKING PEST CONTROL SERVICES

Local Authority Approved Contractors

Our services include: wasps, bee swarms,
hornets, bed bugs, fleas, flies, ants,
cockroaches, rats, mice, squirrels,
rabbits, moles, foxes and deer

EXPERTS IN PEST CONTROL THROUGHOUT SURREY

01306 743001 Ivor: 07710 117491 Chris: 07971 519415
Family-run business with over 30 years' experience

www.dorkingpestcontrol.com



KING WILLIAM IV

Dear friends and neighbours,

Summer at last! Fingers crossed we have reached the quarter finals of the Euros, and
football's coming home! We were lucky enough to be invited to the warm up match at
St James's Park, and will be continuing our support by showing all the July matches. Go England!

We have live music on Sunday 7th July 4 pm, and on a couple of Sundays in August, so please check our website for
the latest information.

We hope to see you soon, a couple of months of summer left to enjoy our fabulous gardens and views.

Eamonn & Anne x

Byttom Hill Mickleham 01372 372590 www.thekingwilliamiv.com

TIM LANGLEY

Experienced craftsman

ANTIQUE RESTORATION
CABINET MAKING
FRENCH POLISHING

Free estimates collection & delivery
01372 457700 07960 486455
tmlangley@virginmedia.com

TONY WINCH

CARPENTER, JOINER
& CABINET MAKER

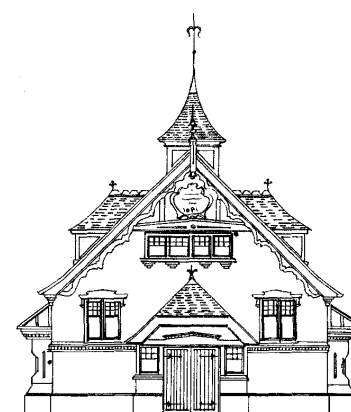
www.tonywinch.com

01306 742373
07969 016 924

DORI VANA PLUMBING

Bathroom renovations and
all plumbing services

07977 220465 / 01306 887282
dvanaplumbing@gmail.com



Mickleham Village Hall available for hire

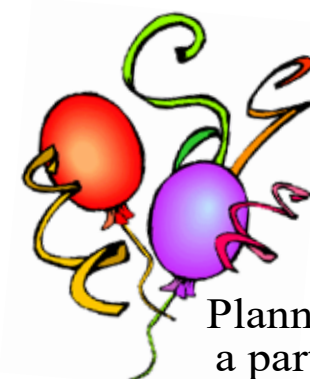
Hall bookings
Table & chair hire

Deanna Darnell

07790 941 601

bookings@micklehamvh.co.uk

www.micklehamvillagehall.org.uk



Planning
a party?

Equipment
available for hire

China ~ Cutlery

Electric urn

Equipment hire

Mary Banfield

01372 373912

admin@micklehamvh.co.uk

Community Directory

BOX HILL AND HEADLEY HEATH (National Trust) 01306 888793
Lead Ranger – Meredith Westall (Merry) meredith.westall@nationaltrust.org.uk
07811 088097

Friends of Box Hill – Chair Lyn Richards 01737 842889
lyn@mra.uk.net

BOX HILL SCHOOL 01372 374814
Headmistress – Hayley Robinson
reception@boxhillschool.com

DORKING CRICKET CLUB
Chairman – Andrew Homewood homewooda@hotmail.co.uk

DORKING GROUP OF ARTISTS
Exhibition Secretary – Patricia Booth patricia booth100@gmail.com

DORKING LAWN TENNIS & SQUASH CLUB
Maddy Halliwell madeline_halliwell@hotmail.co.uk

DORKING RUGBY CLUB 07789 176417
Jim Evans jim@flintcottage.net

THE GARDEN SHED 07759 646353
Pauline Davis paulinedavis33@icloud.com

JUNIPER HALL FIELD CENTRE 01306 734501
enquiries.jh@field-studies-council.org

Head of Centre – Maddy Jones m.jones@field-studies-council.org
Friends of Juniper Hall – Suzy Hughes 01483 281935
suzy@suzyhughes.co.uk

MICKLEHAM CHILDREN'S PLAYGROUND ASSOCIATION 07767 891772
Secretary – Sarah Parfitt sarah@sarahparfitt.com

MICKLEHAM CHORAL SOCIETY www.micklehamchoral.org.uk
THURSDAYS 8 - 10 pm – MICKLEHAM VILLAGE HALL
Conductor – Juliet Hornby 01372 373106
Secretary – Mike Benson secretary@micklehamchoral.org.uk

MICKLEHAM OLD BOX HILLIANS FOOTBALL CLUB
Secretary – John Atewell 01372 374745

MICKLEHAM PARISH COUNCIL www.micklehampc.org.uk
SEE WEBSITE FOR MEETING DATES 01372 379381
Chairman – Rev'd David Ireland rev.ireland43@btinternet.com
clerkatmpc@gmail.com

Parish Clerk – Feena Graham

MICKLEHAM PARISH MAGAZINE 07933 300744
Co-Editor – Charlotte Daruwalla editor@micklehammag.co.uk

Co-Editor – Jan Budleigh 07780 976301
editor@micklehammag.co.uk

MICKLEHAM VILLAGE HALL 01372 362309
Chairman – David Kennington davidkennington144@gmail.com
Bookings Manager – Deanna Darnell 07790 941601
bookings@micklehamvh.co.uk

ST MICHAEL'S CHURCH

within the United Benefice
of Leatherhead and Mickleham

INCUMBENT — The Rev'd Will Perry 01372 372313

PARISH PRIEST
The Rev'd Dr Sandra Faccini * 01372 417664
07763 488961

parishpriest@micklehamchurch.org.uk
* Main working days: Monday, Tuesday and Sunday

CHURCHWARDEN
Catherine Diffey 07790 473167
Mickleham@diffey.me.uk

DEPUTY CHURCHWARDEN
Timothy Mathieson 07555 597163
TimothyMathieson@aol.com

PARISH ADMINISTRATOR
Alison Wood 01372 376443
admin@micklehamchurch.org.uk

PCC SECRETARY
Caroline Jones 07504 271376
pccsecretary@micklehamchurch.org.uk

TREASURER
Richard Siberry 01372 375303
pcctreasurer@micklehamchurch.org.uk

ORGANIST
David Fishwick 0208 7732420
davidfishwick1@btinternet.com

WEDDINGS CO-ORDINATOR
Elaine Machin 01372 724972
weddings@micklehamchurch.org.uk

BAPTISMS CO-ORDINATOR
Vickie Leney 01306 884054
baptisms@micklehamchurch.org.uk

FUNERALS CO-ORDINATOR
Carole Brough Fuller 01737 842918
funerals@micklehamchurch.org.uk

WEBSITE MANAGER
Kelvin Pritchard 07770 280410
website@micklehamchurch.org.uk

PCC ECO GROUP
David Kennington 01372 362309
davidkennington144@gmail.com

www.micklehamchurch.org.uk

For information about services for other
denominations see website pages.
Search on 'Churches Together Mole Valley'

REGISTERS

WEDDING
Saturday 1st June Billy McClaren and Becky Fenwick

CALENDAR

JULY

2	Tuesday	7 pm	Compline in church
6	Saturday	2 pm to 5 pm	Village Summer Fair p3
7	Sixth SUNDAY of Trinity	10 am	Family Service
10	Wednesday		Mickleham Parish Council Meeting
13	Saturday	2.30 pm	M&WHS Summer Show p9
14	Seventh SUNDAY of Trinity	10 am 11.30 am	Holy Communion BCP Morning Prayer at Westhumble Chapel
16	Tuesday	7 pm	Compline in church
20	Saturday	9 - 10 am 11 am to 3 pm	Women's breakfast at The Stepping Stones p2 Friends of Juniper Hall Open Day
21	Eighth SUNDAY of Trinity	8 am 10 am	CW Holy Communion Holy Communion
22	Monday	3 pm	Tea @3 St Anthony, Pilgrims Way p2
27	Saturday	9 - 10 am	Men's breakfast at The Stepping Stones p2
28	Ninth SUNDAY of Trinity	8 am 10 am 3 - 5 pm	BCP Holy Communion at Westhumble Chapel Holy Communion Tea and Cake at St Michael's Church p2

AUGUST

3	Saturday	10 am to 12 noon	Coffee morning at Westhumble Chapel
4	Tenth SUNDAY of Trinity	10 am	Family Service
6	Tuesday	7 pm	Compline in church
11	Eleventh SUNDAY of Trinity	10 am 11.30 am	Holy Communion BCP Morning Prayer at Westhumble Chapel
Copy deadline for September parish magazine			
18	Twelfth SUNDAY of Trinity	8 am 10 am	CW Holy Communion Holy Communion
20	Tuesday	7 pm	Compline in church
25	Thirteenth SUNDAY of Trinity	8 am 10 am 3 - 5 pm	BCP Holy Communion at Westhumble Chapel Holy Communion Tea and Cake at St Michael's Church p2
29	Thursday	10 30 am	Garden Shed visit to Turners Hill Dahlia Nursery p9

Dates for your diary

Saturday 14th September

Heritage Open Day at
St Michael's Church
Harvet Supper
Children's harvest craft workshop
Harvest Service in church
more details next month
Bonfire building starts
Bonfire and Fireworks Evening

Saturday 5th October
Sunday 6th October
Sunday 6th October

Saturday 12th October
Saturday 9th November



MEMBERS OF THE PAROCHIAL CHURCH COUNCIL

Sarah Pritchard	Elaine Machin
Mark Day	Tim Mathieson
Andy Diamond	Beverley Mehta
Catherine Diffey	Kelvin Pritchard
Caroline Jones	Richard Siberry
Vickie Leney	Geoff Black

ST MICHAEL'S CHURCH COMMUNITY GROUP COMMITTEE

Mark Day	07852 117249 mickleham@hotmail.com
Denise Darling	denisedarling4@btinternet.com 07780 673372
Andy Diamond	07789 775354 adiamond714@gmail.com
Kelvin Pritchard	07770 280410 Kelvin@wan2lan.com

ST MICHAEL'S CHURCH COMMUNITY GROUP HELPING HANDS INCLUDING FOOD FOR FRIENDS

A service for all residents of Mickleham and Westhumble

Examples of services we offer:

- Essential shopping / collection of prescriptions
- Changing library books
- Small tasks: eg changing fuses, altering clocks etc
- Dog walking
- Visiting / befriending
- Home-cooked meals for local families going through difficult times

Requests to:

Will Dennis 07903 842674 wddennis@icloud.com
(who can put requests onto WhatsApp)
Mary Banfield 01372 373912 mgbmw@aol.com
Frances Presley 01306 882473 jasempres@gmail.com

More helpers needed – please contact
Frances if you can spare some time.

Community Directory

Continued from page 13

MICKLEHAM & WESTHUMBLE BADMINTON CLUB
Membership Secretary – Sarah Pritchard tinkerbell0044@hotmail.com

MICKLEHAM CRICKET CLUB
Membership contact – Will Dennis 07903 842674
will@micklehamhallfarm.co.uk

MICKLEHAM & WESTHUMBLE HORTICULTURAL SOCIETY
Chairman – David Kennington 01372 362309
www.surreycommunity.info/mwhs or davidkennington144@gmail.com

MICKLEHAM AND WESTHUMBLE LOCAL HISTORY GROUP
Chairman – Ben Tatham 01306 882547
ben@thetatham.co.uk or www.micklehamwesthumblehistory.co.uk

MOLE VALLEY DISTRICT COUNCIL 01306 885001
Cllr Chris Budleigh 07801 520059
councillor.budleigh@molevalley.gov.uk

Cllr Abhiram Magesh 07765 126399
councillor.magesh@molevalley.gov.uk

Cllr Leah Mursaleen-Plank 07803 353352
councillor.mursaleen-plank@molevalley.gov.uk

THE ARTS SOCIETIES (FORMERLY NADFAS)
Betchworth – Mary Venning 01306 883301
Dorking – Sue Tatham 01306 882547
Leatherhead – Sarah Sheridan 01306 883699

ST MICHAEL'S CHURCH OF ENGLAND (A) INFANT SCHOOL 01372 373717
info@stmichaels-dorking.surrey.sch.uk

Friends of St Michael's School – friendsofstmichaels2017@gmail.com

ST MICHAEL'S COMMUNITY NURSERY
WEEKDAY MORNINGS – MICKLEHAM VILLAGE HALL
Supervisor – Hilary Budd 01372 361021
stmichaelsnursery@btinternet.com

SURREY COUNTY COUNCIL 03456 009 009
Councillor – Hazel Watson 01306 880120
hva.watson@btinternet.com

SURREY WILDLIFE TRUST 01483 795440
info@surreywt.org.uk

TREE WARDEN
David Kennington 07546 952521
davidkennington144@gmail.com

WESTHUMBLE NEIGHBOURHOOD WATCH
Lead Co-ordinator – David Allbeury 07860 227451
westhumble.neighbourhood.watch@gmail.com

WHATSAPP GROUP
Will Dennis will@micklehamhallfarm.co.uk

ADDITIONAL CONTACT INFORMATION

CITIZENS ADVICE
Dorking – Lyons Court 01306 732302
Leatherhead – Swan Mews High Street 01306 732301

CRIMESTOPPERS 0800 555 111

POLICE Non-emergencies 101

(often quicker to make online report) <https://report.police.uk/>

Neighbourhood Specialist Team – Dorking Rural East
General enquiries molevalley@surrey.pnn.police.uk

NHS Urgent and emergency care 111

Babysitting by local youngsters

Those listed below are at least
14 years old.

Gracie Owen **07790 900649
Annabelle Prosser* 07443 634179

Maisy Presley*** 07720 657327

Martha Pearce* 07514 080005

Rory Lee 07503 702517

Daisy Armitage 07891 188142

Olivia Newby 07703 110363

Eva Lanceley **07903 630567

Ella Parfitt 07746 882175

* Holidays only

** Parent's mobile number

***Weekday evenings only

If you would like to add your
name to this list please get in
touch with

editor@micklehammag.co.uk

No Charge

Advertising in the Parish Magazine

Please contact
ads@micklehammag.co.uk
Small ads: a nominal fee is
charged for ads where items or
services are bought or sold.

We have been advised to print
the following reminder:
*We cannot guarantee the
quality of the goods and
services offered by our
advertisers.*

*We are very grateful to all our
advertisers, who make the
production and distribution of
this magazine possible.*



Community News

Megan Tushaw

Readers will be deeply saddened to receive the news of the death of Megan Tushaw (née Loveless) daughter of Steve and Sian of Pilgrims Way. There is to be a memorial service 1st July at Mickleham. We send her husband Tom and the Loveless family love and deepest sympathy for their loss.

Jean Suckling

News of the death of Jean Suckling of Camilla Drive has also reached us as the magazine was in preparation. Jean was the wife of Geoffrey Suckling who died in 2011. She was an active partner in his philanthropic activities through the Ranmore Trust. Her funeral will take place at noon on 16th July at St Michael's. Again, we send her family and friends deepest sympathy.



The New Constituency

For the General Election on 4th July, Mickleham and Westhumble will be in a new constituency: Dorking and Horley. The boundaries of the new constituency are shown on the map.

The Electoral Commission reviews the populations of all the constituencies to equalise the number of voters per constituency across the country. This time the number of constituencies in Surrey will increase from 10 to 11. The number of constituencies in Wales will reduce by eight and in Scotland by two so that the number of MPs remains the same at 650.

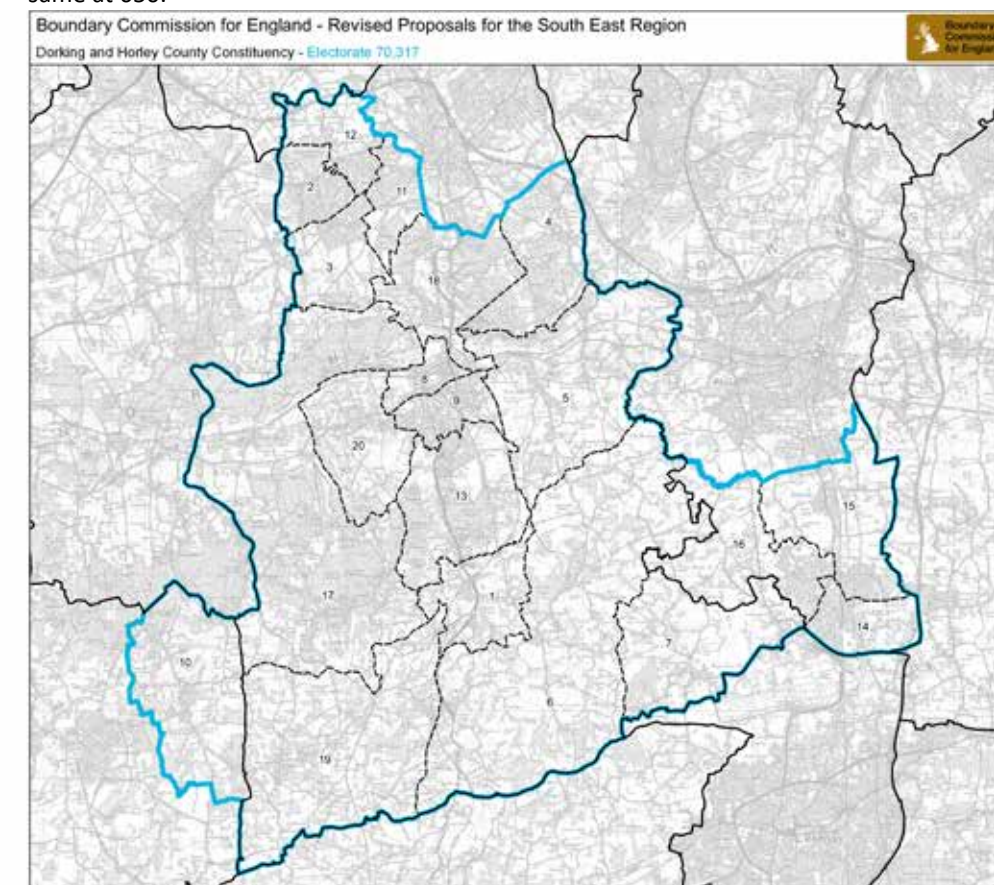
People who have lived here since the early 1980s will remember that from 1950 to 1983 we used to be in a constituency called Dorking and Horley – so we have been here before, but the boundaries are different this time. This has nothing to do with Mole Valley District Council which will continue as before.

Ben Tatham

Photo ID

Do not forget to take photo ID to the polling station with you. You can check what you need at <https://www.electoralcommission.org.uk/>

With very happy news, Judith Long and Clive Bull of Mickleham have reported the birth of their first grandchild on 31st May, named Audrey Cecilia Bull, a daughter for their son Tim and his wife Lizzie. They live in Twyford.



Key to map

Blue Outline - Constituency
Black outline - Local Authorities
Broken line - Wards

1. Beare Green
2. Bookham North
3. Bookham South
4. Box Hill and Headley
5. Brockham Betchworth & Buckland
6. Capel, Leigh & Newdigate
7. Charlwood
8. Dorking North
9. Dorking South
10. Ewhurst
11. Fetcham East
12. Fetcham West
13. Holmwoods
14. Horley Central & South
15. Horley East & Salfords
16. Horley West & Sidlow
17. Leith Hill
18. Mickleham, Westhumble & Pixham
19. Okewood
20. Westcott



Mickleham Parish Council

May 2024 Report

years of loyal service to the community, especially in his role as Responsible Finance Officer. His good humour and remarkable efficiency will be greatly missed by all his colleagues.

Amongst the matters discussed was the ongoing problem of parking in the Old London Road and the speed of vehicles, especially motorbikes, avoiding the average speed cameras on the A24. Thanks were expressed to our Speedwatch team for their efforts to discourage speeding motorists. The increased traffic noise, especially now that there is an event at Ryka's on Wednesday evenings, was noted and our Community Speedwatch team intend to monitor the situation in the coming weeks.

The issue of the sale of Surrey County Council properties, particularly those in Norbury Park, was discussed in the light of the impact on current tenancy holders of these properties. Some progress had been made but more has yet to be done in the coming couple of years.

Councillor Will Dennis, David Allbeury

and the Chair had been on a visit with Mole Valley District Councillor Chris Budleigh to look at a Social Housing scheme at Poland Meadow, Brockham with a view to exploring the possibility of such a scheme in the community of Mickleham and Westhumble. More information will be provided when available.

The results of the recent elections for Police and Crime Commissioner and Mole Valley District Council were noted and a warm welcome was given to the fact that Leah Mursaleen Plank had been re-elected as one of our district Councillors.

The suggestion was that Mickleham and Westhumble together organise a hustings once the date of a general election is known and the various candidates have been declared. This is now being followed up, with St Michael's Church being proposed as the venue.

David Ireland (Chair
Mickleham Parish Council)

New Parish Councillor Elected

The Mickleham Parish Council appointed Emma Flynn, as a new parish councillor at its recent Annual Parish Council Meeting on Wednesday 8th May 2024.

Following the retirement of Councillor David Ottridge, the Parish Council advertised for a replacement councillor in the weeks prior to the Annual Meeting.

Emma has lived in Mickleham for almost three years, with husband Peter and children Jackson (15) and Holly (13) together with their very friendly labrador, Buddy. Before moving to Mickleham, they lived not far away in Leatherhead with both Jackson and Holly attending the fabulous St Michael's Infant School. Emma trained as a nurse, at St Mary's Hospital in London working for most of her career in the Intensive Care Unit at Guy's & St Thomas' Hospitals.

When her children were little, she

made the decision to leave London to work much closer to home at Epsom General Hospital in the Elective Orthopaedic Hospital. Emma has worked here for almost eleven years and loves caring for patients before and after planned orthopaedic procedures, mainly hip and knee replacements. Her role as Associate Director of Nursing at SWLEOC is a varied one and never has she had two days the same as the NHS faces fresh challenges regularly. Emma is very excited about her role as parish councillor and understands the importance of community and environment and how these impact in so many ways to people's lives.

Mickleham Parish Council



Mickleham Parish Council Future Meeting Dates:

Wednesday 10th July, Wednesday 11th September, Wednesday 13th November, 2025
Wednesday 8th January, Wednesday 12th March

Euphemisms

Following on from Frances Presley's article in May about the origin of the derivation of the word 'loo', I always thought it derived from the expression Gardyloo, a corruption of the French *Regardez l'eau* – Watch out for the water, which was shouted in days of yore when chamber pots were emptied out of upstairs windows into the streets below.

The internet suggests other possibilities. During the First World War British soldiers in France came across *lieux d'aisance* for the toilet. It translates as 'place of ease'. This seems to be the most logical explanation as the first supposed recorded use of the word, 'loo' in print occurs in James Joyce's *Ulysses* published in 1922. 'O yes, mon loup. How much cost? Waterloo. Watercloset.' The first utterly unambiguous, known use of loo in English is in Nancy Mitford's 1940 novel *Pigeon Pie*, 'in the night when you want to go to the loo.'

It could also have nautical origins. When caught short at sea it was, and still is, advisable for men to relieve themselves

on the leeward side of the ship to avoid 'blow back' if using the windward side. Leeward would have been pronounced looward in some accents and been contracted to 'loo'.

PS. Did you know that in Birmingham a chamber pot was known as a 'guzzunder' because, of course, it goes under the bed. I like it.

Barbara Jones

We all must have dozens of other euphemisms for 'conveniences' and the call of nature. As a young girl, well before I had reached the age of using any make-up, I was asked by a very kindly gentleman, a parental friend, if I wished to 'powder my nose'. As I had no powder, and being slow on the uptake, I politely said 'no thank you'. All the while I was bursting for a loo. Fortunately it did not end in disaster. I have never come across that euphemism again.

If you have come across interesting euphemisms (preferably tasteful), do let us know.

Editor



Aurora Borealis



There was a rare appearance of the Aurora Borealis over Surrey in mid-May. Jacqueline Kenney of Westhumble was fortunate to see the spectacle and capture these photos. Many of us were asleep and missed it.

Telling Tales



In the June edition readers were asked if they had a view on the inclusion of short stories in the magazine. We received one letter from Mrs Trellis of North Wales – no, sorry, wait a moment while I check – Will Dennis of Mickleham, to whom many thanks. He thinks it adds to the variety of content of the magazine, provided we can find good quality contributions. I am sure Mrs Trellis would agree that Alison Walton's story last month met the standard. We hope to have more in due course.

Still time to comment if you wish at editor@micklehammag.co.uk

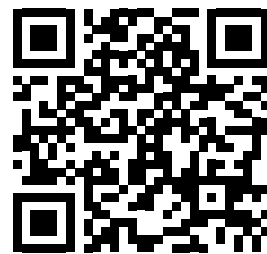


Following the death last year of Judy Kinloch the parish council discussed how to remember her hard work and support as she had been an active member of the MPC until her retirement in summer 2018. The councillors agreed that a living item would be more appropriate given her involvement with the Horticultural Society. A tree was planted in the churchyard in early the spring this year and on Friday 31st May there was a small ceremony to place a plaque by the tree, both donated by Mickleham Parish Council. The event was attended by the Kinloch family and parish councillors.

& Derek Horne
Associates

Your local **Town Planning Consultancy**
winning permissions for over 30 years!

W: horneassociates.com | E: info@horneassociates.com | T: 07767 477978



Scan with your phone camera
to find out more.

CURCHODS

Thinking about moving in 2024?

Buy, sell, let and rent in Bookham, Fetcham,
Mickleham, Westhumble and Dorking with
your local award-winning estate agent.

01372 450500 | bookham@curchods.com



GB PLASTERING

Established 1999

We offer all aspects of plastering from
small repairs to new builds
All undertaken by skilled plasterers, respecting
your home and property
Full insured Westhumble based
07970 591962

Cole and Walter Lock & Key



07890 609194 alastairwalter123@btinternet.com
Supply and installation of all locks
Residential and Commercial

All your annoying & odd jobs fixed fast



Are you: struggling to get your odd
jobs done?
lacking the necessary skills?
struggling to find the time?
lacking the correct tools?
struggling to find a reliable
person?

Mickleham based
07939 131593
help@toolboxtony.co.uk

see toolboxtony.co.uk for more information on services offered

The Remains of His Day

On Tuesday 4th June 2024 I received a
text from Will Dennis asking me to
bowl the first ball in MCC's first match
of the season on Sunday 9th June.

The fixture was against Banstead
Sunday Thirds for whom my husband
Paul had played for many years. As
he had also occasionally played for
Mickleham, they had decided to hold
the match in memory of Paul.

As I am now nearly 82, I quickly texted
family for help. Daughter Emma would
bring Digby Dog; and grandson William,
now back living in London after seven
years abroad was keen to come in case
there was a chance to play.

William had actually played with Paul
for MCC in 2007 when he was 11.
Problem was William had no cricket
gear, so NOW WAS THE HOUR.

Paul died in June 2020 and his cricket
gear had been stowed away for nearly
four years. I could not even think of it,
let alone get it out... or could I?

I got my lovely gardener to approach it
in Paul's garage. First the bat (do they

have left-handed ones?),
then the pads, then the large
storage box was carried over
into the Lodge.

After he had gone and I was
alone, I took a deep breath
and took off the large lid. This
is what I found was in there:

1 long sleeved cream cabled
sweater
1 sleeveless white cabled
sweater
1 pair of cream cricket joggers
1 Surrey Seniors shirt
2 England 70+ shirts with 3 lions (1 still
in its packaging)
1 box and several knee supports
6 pairs of white cotton pants
2 pairs plus 1 odd white cotton socks
1 England 70+ cap with 3 lions
1 Australian cricket cap
2 Surrey Seniors caps
1 pair cricket boots with studs and some
Surrey earth!

(Paul was buried in his Banstead
shirt and cap so they are with him in
Mickleham Churchyard.)



William and Paul in 2007

I do not know how I did it but I did with
a great swell of emotional pride.

All washed now and waiting for William
to see tomorrow.

Life after death indeed.

FOOTNOTE

William has size 11 feet so if anyone has
a son or grandson who would like a pair
of size 9 cricket boots that have played
for England in Australia on the Ashes
ground please contact me.

Jo Brown



Events in October

Harvest Supper

Saturday 5th October

Children's
harvest craft workshop

Sunday 6th October

Harvest Service in church

Sunday 6th October

Save the dates
more details in September magazine

JUNIPER HALL OPENS ITS DOORS

Juniper Hall, in collaboration
with the Friends of Juniper Hall
will be holding an



Open Day and Bioblitz event

on Saturday 20th July 11 am to 3 pm

Fun outdoor activities for the whole family

The opportunity to meet local naturalists

A chance to learn about wildlife conservation

An opportunity to learn about the History of Juniper Hall

A delicious BBQ and homemade cake

Numerous stalls representing a wide range of wildlife groups,
also a day filled with nature activities including chances to
try pond dipping, small mammal trapping, minibeast hunts,
bushcraft and so much more.

Entry will be by ticket only so that we can manage numbers and
tickets can be obtained by using the following link

Juniper Hall Bioblitz 2024 Tickets, Sat 20 Jul 2024 at 11:00
| [Eventbrite](https://www.eventbrite.co.uk) or visiting the Friends of Juniper Hall website
friendsofjuniperhall.org

Money raised by the event will be added to the funds
established by the Friends of Juniper Hall to provide extra
facilities for the students.

CARPET REVIVAL **REVIVING CARPETS & UPHOLSTERY IN SURREY**
Covering Dorking and all surrounding areas

We clean to a professional standard using eco-friendly chemicals and the latest equipment.
Offering a thorough survey, clean and customer satisfaction. Certified and insured.

Call 01306 740035 / 07747 122128
 or visit www.carpetrevival.co.uk
 to book a free home visit/quotation

Quote Code 'CR110' and save 10% off your booking

STEVE LAWRENCE
PLUMBING HEATING ELECTRICS
 Boiler installation, maintenance and repair
 Based in Mickleham Local references
 30+ years' experience

07760 266718
stevenlaw37@hotmail.com



Vivien Cresswell
Made-to-measure Soft Furnishings
 Curtains Roman Blinds Cushions

Extensive range of fabrics

01737 843858
info@cresswellcurtains.co.uk
www.vivienecresswell.co.uk




Joseph De Decorators

- Painting • Decorating
- Wallpapering • Plastering • Tiling

Mickleham based
 40 years' experience

01372 372331 07973 358 932

Domestic Appliance Repairs
 30 years' experience repairing and installing all gas and electric domestic appliances



- Cookers, Microwaves
- Dishwashers
- Washing machines
- Fridges / Freezers
- Water coolers
- Coffee machines
- Tumble dryers

Contact: Andy 07895 719 706
andy@kirksdomestics.co.uk



PAINTING DECORATING
 ANDREW CLARK 07800 796 737

INTERIOR & EXTERIOR • CARPENTRY • HANDYMAN




WATERCOLOUR PAINTINGS

- Do you have someone who is difficult to buy for? A pet portrait is ideal
- For weddings, a picture of the venue for invitations and orders of service
- Special cards for birthdays, baby announcements and other occasions.

Each one sketched from a photograph Prices start at £20

 @philippahutter philippa@hutter.co.uk

The Garden Shed Visit to Loseley Park

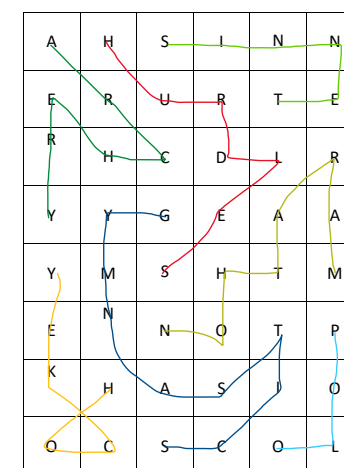


Our first Garden Shed group visit of the year was to Loseley Park garden, part of a 1,400-acre estate which has been in the care of the More-Molyneux family since the beginning of the 16th century. The manor garden was frequently visited by Elizabeth I, who enjoyed the view from the moat and, it is said, planted the mulberry tree at the entrance to the garden.

Until the early 90s, the 2.5 acre walled garden was full of greenhouses and vegetable beds, supplying produce to London venues and local markets. When the decision to redevelop the area was made, the garden was sectioned into rooms, a popular theme introduced by Gertrude Jekyll who was a neighbour and is thought to have contributed to some of the design.

The first of five rooms is at the entrance

Strands Solution June 2024



ARCHERY TENNIS RUGBY MARATHON POLO HOCKEY GYMNASTICS

to the garden where a 200-year-old wisteria, trained along the wall, was in full bloom; both colour and scent were magical. Next came the award-winning rose garden, the first area to be redeveloped thirty years ago. It is planted with short box hedges around the perimeter of each bed, providing a maze of pathways to view approximately one thousand roses including ramblers, climbers and shrubs. With only two full-time gardeners, this area is maintained with the help of David Austin Roses who provide advice on care and replanting with pest-resistant varieties.

The flower garden was a mix of vibrant coloured shrubs, herbaceous plants and bulbs, in-filled with annuals which are lifted when finished and their seeds dried, ready for planting next year's blooms. This led into the herb garden specialising in traditional varieties and themed into household, medicinal, decorative and culinary sections.

In the White Garden a small café by a water feature provided shelter from the showers and a perfect spot to enjoy a break while admiring the borders packed with white, cream and silver blooms and foliage.

The final area to be redeveloped was the organic vegetable and cut-flower garden, formerly a paddock. This has been the focus of attention for the last two years, using traditional methods such as companion planting to create colour and help with pest reduction. For the future the team plan to introduce no-dig gardening.



CHERRY FAIR
 monthly newsletter June 2024

Churchwardens' Raffle, Toys, Books, Plants, Home made cakes, Bric-a-brac, Tombola, etc. etc. Teas & Cakes

at **ST BARNABAS' CHURCH** RH5 6SP

RANMORE COMMON
Saturday JULY 20th
 from 1.30pm to 4.30pm
Fun for all the Family

The garden at Loseley has a long and varied history. We were reminded how it has evolved to use traditional gardening techniques alongside more up-to-date methods to create an area regarded by experts as a national, renown garden. On our doorstep, it is well worth a visit for the garden and, of course, a scoop of their popular ice cream.

When considering selling or buying;
a personalised property service for clients

Tim Garbett and his team are based in the Home Counties and Central London, handling a variety of clients & properties.

'Embarking on a sale or purchase is a major commitment and we ensure a client's property journey is tailor made to their requirements and for us to advise and navigate in an ever changing property market.'



Please contact our team
tim@garbett.partners 07831 576616
sam@garbett.partners 07979 876380
www.garbett.partners
timgarbettgp

Phil's Mowing Dorking

Regular Lawn Mowing
General Garden Maintenance
Lawn Care & turfing
Hedge Trimming
Pressure Washing



phil@philsmowingdorking.co.uk
07905 160 765

Building Plans

For home improvements & extensions

*Including planning & building regulations
Fast efficient service at competitive rates*

MICHAEL LLOYD CEng MICE

For free consultation:
Phone: 01483 205479 or 07958 791 402
mfl_uk@yahoo.co.uk

Get IT Fixed, Get IT Connected

Expert Repair & Maintenance



Brockham based. No call out charges. Fully transparent quotations with no hidden costs. We make technology work for you.

Call us now on
01737 845980

ChalkHill Systems
www.chalkhillsystems.co.uk



Extensions and alterations often require a
Structural Engineer

Robert Wynter & Partners Ltd

01306 879875

Book House, Vincent Lane
Dorking RH4 3HW
www.rwpltd.com

remedial roofing

For people with roof issues and deficiencies

- New roofs – slate & tiled roof specialists
- All roof repairs, moss removal & gutter clearance
- Flat roofs, traditional felt & GRP fibreglass
- New uPVC Fascia, soffit & guttering

Obtain an up-to-date report of remedial roofing on www.checkatrade.com



ALL WORK GUARANTEED
Call us today for a FREE quotation on:
01306 304736 | 07852 833802
info@remedialroofing.co.uk www.remedialroofing.co.uk



Hot Snacks

Normally at this time of year I agonize a little about having hot snacks in Forest School and if it is safe to have a fire or not. We are conscious of our responsibility to teach children about how hazardous fire can be, both to themselves and to the environment. At nursery we have several engaging story books that we use to teach such messages. However, this year, I am not agonizing as much as normal. We barely have two consecutive good weather days, and having a hot snack has been a bit of a necessity.

I thought I would share one of our very easy, very adaptable and popular recipes with you.



Forest School Flat Breads

300g self-raising flour

½ tsp bicarb

300g natural yoghurt (or coconut yoghurt)

Flavorings

*for a savory flatbread add 1tsp salt, and 1tsp dried herbs, or fresh chopped herbs/wild garlic

*for a sweet flatbread add 1 tsp caster sugar and chocolate chips or raisins or other dried fruit of your choice.

Put the dry ingredients into a bowl, add the yoghurt and form into a soft dough. Allow to rest for 5 minutes while you heat up a pan with a little oil, over the fire.

Divide the dough into 10 small balls using a little extra flour if necessary. Pat the dough to form the flatbread and then cook for a couple of minutes on each side.

The children love making these and



get a great sense of achievement eating something they have made themselves. I am told it also works on a BBQ!

Hilary Budd

The Lost Cummerbund

Do you ever lose things around the house and spend hours looking for the? Annie and I routinely ring up each other's mobile phone to see where they are, recently finding hers in the airing cupboard. And we have some fantastic widgets called AirTags, which enable you to use your iPhone to track down your keys, wallet and hearing aids. (You have to have found the phone first of course). None of this was any use the other day

when, dressing for a black tie dinner, I lost my cummerbund. More accurately, I lost the cummerbund that I borrowed from an old friend 50 years ago and have never given back. After fruitlessly searching the bathroom, bedroom, car, airing cupboard etc, I gave up and put on my second cummerbund, the one that actually is mine. I found the original one when undressing in the small hours. I had put it on.

All evening, I had been wearing two cummerbunds, one on top of the other. At least this means I can now return the one I borrowed 50 years ago, assuming I do not lose it again between now and when we are going to stay with the said old friend in June.

Younger readers may have to Google 'cummerbund', together with 'black tie' and 'airing cupboard'.

Will Dennis

Come and visit Silvermere Softplay Centre, where the joy and benefits of play are exceeded!

Situated in the heart of Dorking's Meadowbank Park, Silvermere's newly established softplay centre is an accessible and inclusive space for children and young people to unleash their natural energy through movement, play, and connection with others. We offer soft play sessions; pre-school play and parties. Our aim is for Silvermere Softplay to become a thriving hub for the community, where everyone – young and old – feels welcome. Later this year, we will be introducing structured movement-based groups to enhance wellbeing and connection for adults, as well as for children and young people.



Our warm and welcoming café – serving a delicious range of homemade, locally-sourced food and drinks – is the perfect space for everyone, including well-behaved pooches, to relax and connect.

For more info and booking: www.silvermere-softplay.co.uk
Proprietors: Katie and Michael of School Lane, Mickleham



Mickleham Village Hall, Dell Close Weekdays 9.15 am - 2.45 pm (term time)

Mornings only or longer sessions available

Cosy preschool nursery • Superb garden and forest school
We offer an excellent range of pre-school activities for 2-to 5-year-olds, where children can learn through play in an informal, well-resourced, friendly atmosphere.

Contact us for more information about admissions
01372 361021 www.stmichaelscommunitynursery.co.uk

Suitable items for the foodbank collection

Tinned veg / tomatoes / soup / sauces / baked beans
Powdered milk / UHT milk (green and blue only)
Rice pudding / long life sponge puddings
Coffee / tea bags / long life fruit juice
Pasta / rice / pulses / instant mash
Jam / honey / marmalade / spreads
Sugar (500g bags only)

Washing-up and cleaning products
Tissues / paper towels / tampons
Men's / women's toiletries
Laundry products
Nappies
Pet food

**Please do not include
out-of-date items or those
that require refrigeration**



LOCAL FOOD BANK COLLECTION POINTS

MICKLEHAM
Garden Corner off Old London Road
Mary Banfield 01372 373912

WESTHUMBLE
St Anthony, Pilgrims Way
Sue Tatham 01306 882547

Or St Michael's Church on Sunday mornings



10% off
for May and Summer half term
Use code MPM10



**Fun-fuelled
holiday
activity days**
at High Ashurst, Mickleham
for 6-13 year olds

Book now!

www.surreyoutdoorlearning.uk



Art at St Michael's

Pablo Picasso famously stated that 'Every child is an artist,' and I could not agree more! The little Year 2 artists I have had the privilege to teach this year have demonstrated their creativity, their willingness to challenge themselves and their joy in exploring the varied disciplines of art.

We began the year with textiles, magazine cut-outs, marker pens and glue. We explored 'nature's tools' – leaves and sticks and even an eggshell or two. We explored charcoal, carbon paper, watercolour, acrylic and pastels. As well as using traditional art tools, the children explored using an array of household items to create marks and imagery, from a Christmas cracker metal egg cup holder to old toothbrushes and recycled plastic. To reach our desired effects we have worked with a variety of papers from cardboard to watercolour paper to the thinnest lampshade paper. The children have worked individually as well as collaborating on various projects.

While the children's practical education has been a process of demonstrating, exploring, experimenting and creating we have also focused on artists – Picasso, Van Gogh, Kandinsky, Monet among others. The children have also explored the theory of art and the vocabulary of art. What is Art? How was art used historically, from cave paintings

to the Egyptian pyramids, to portraits of long-gone kings and queens. We have looked at what inspires artists and which style of art they may use to bring that inspiration to life. We have studied ephemeral art, abstract and expressive art, architecture, observational and continuous art, drawing to scale, 3D art, close-study drawing, monoprinting and more.

Throughout the year, the classroom has become a forest full of leaves and twigs, a wool factory, as well as a recycling centre. We have had charcoal on little noses, painted hands and sometimes shirts! I have often had the joy of hearing excitable little

voices asking, 'What are we doing today, Mrs. Travers?' I have witnessed their happiness at seeing their work celebrated in our termly Art Gallery power point presentations. Tasks and challenges come more naturally to some, however, what has been wonderful to discover is that through the exploration of many art disciplines, every child in the class has excelled in a particular challenge. The child that may have struggled with expressive painting came into his/her



talent while drawing in 3D or abstract art.

We will finish the year with art and music, and I look forward to seeing pencils, pastels, and paint dance onto their sketchbooks.

Adnana Travers



Just Desserts

Answers to these cryptic clues are all puddings.
(Hint: write what you hear)



- | | |
|---|---|
| 1 Rudolph's largest cousin? (6) _____ | 17 Singular old-fashioned trousers
get bloody around
lakeside. (13,5) _____ |
| 2 Leg joint coming after colour? (7) _____ | 18 Usually, icy state
overheated. (5,6) _____ |
| 3 Capsized sponge. (10,4) _____ | 19 A little bit of crying starts
before I introduce myself. (8) _____ |
| 4 It's just a small thing. (6) _____ | 20 Scam somebody who's one
too many? (10,4) _____ |
| 5 Academic establishment
in chaos. (4,4) _____ | 21 Sounds like blind dater likes a
bit of bubbly. (8) _____ |
| 6 Last standing General with
daughter? (7) _____ | 22 Cooking instructions for this
sour confection. (8,4) _____ |
| 7 One of three tenors shortened,
mistress, we hear. (7) _____ | 23 We hear an Italian saying he's
snared some French bread. (5,5) _____ |
| 8 Start the race,
sweet thing! (4,7) _____ | 24 What about a pin-up photo? (10) _____ |
| 9 Character goes after computer
company. (5,3) _____ | 25 Disintegrate nonsense
overturned. (7,7) _____ |
| 10 Espied Little Richard. (7,4) _____ | 26 Short yell from French resort losing
nothing initially. (3,5) _____ |
| 11 Forbid girl to leave quickly. (6,5) _____ | 27 Headless agent follows prohibition
of initial service charge. (7,3) _____ |
| 12 Sounds like king's gift tolled. (8) _____ | 28 Absolutely straight
shoemaker. (4,7) _____ |
| 13 Randalls Park briefly takes on ship of
the desert carrying painter. (5,7) _____ | |
| 14 Support what Etna spewed out. (7) _____ | |
| 15 Painful gamble. (6) _____ | |
| 16 Rude noise begins
without extremes. (9,4) _____ | |

Solution in the next magazine

Sue Tatham



Drifts of wild flowers seen on the local history group's visit to Centenary Wood



**RESIDENTIAL • COMMERCIAL
AGRICULTURAL • SCHOOLS • ACOUSTIC
HOARDING • GATES • SECURITY**

RICHARDSON & BRADS FENCING LTD
T: 01306 640 143 - 01483 414 745
 E: INFO@RBFENCINGLTD.CO.UK
 W: WWW.RBFENCINGLTD.CO.UK
 A: 168 SOUTH STREET, DORKING, SURREY, RH4 2ES

J S Wilson

Mickleham

Carpentry & Building Services



Extensions ~ Conversions
 Refurbishments ~ Property Maintenance
 Fully guaranteed ~ Fully insured
One call WILL solve it all

Contact Jason on: 07761 926684 or 01372 379359
 info@jasonswilson.co.uk





Tracey's
sewing room

*where beautiful things come
together one stitch at a time*

We are now open in Dorking

Haberdashery & Fabrics
 Sewing workshops
 Alterations
 Bespoke dress making
 Blinds, cushions & curtains

Visit us at No 1 North Street

tracey@traceyssewingroom.co.uk 07511079441
 www.traceyssewingroom.co.uk



Treeline Services Ltd

**YOUR LOCAL PROFESSIONAL
TREE HEALTH CARE SPECIALISTS**

Felling • Pruning • Stump Removal • Planting
 Woodchip • Air Spade Services • Consultancy

Call us on 01306 741800
 office@treeline.co.uk • www.treeline.co.uk



**WELL-SEASONED LOGS
FREE LOCAL DELIVERY**

Need help with your accounts?

Running a business needs time and energy – don't waste your time working on your accounts when you can work on your business instead!

At a4c we provide fixed fee accountancy solutions with friendly support throughout the year. Services include accounts, tax returns, VAT, payroll, book-keeping etc.

Friendly approachable and local to Dorking – we enjoy getting to know our clients so call us today for a no obligation chat.

We LOVE numbers so YOU don't have to!

01737 652852

esther@a4cgroup.co.uk

www.a4cgroup.co.uk



Helping older people to live well in their own homes since 2010



- ♦ Award winning care ♦ Companionship services
- ♦ Home help services ♦ Personal care services
- ♦ Highly trained Care Professionals

If someone in your family needs a little help please contact us on
01372 741544



www.homeinstead.co.uk/epsom

Email: simon.burrowes@homeinstead.co.uk



Each Home Instead franchise is independently owned and operated. Copyright © Home Instead® 2022.



EST ——— *The* ——— XVI

• RUNNING HORSES •

You are sure of a warm welcome at this historic 16th century inn.

Join us daily for lunch and dinner, and on a Sunday bring the whole family to us for our delicious home-cooked roast dinner.

We have eight feature rooms, each named after a different racecourse.

OPENING HOURS

Monday – Sunday 12 noon – 11 pm

Old London Road, Mickleham
Dorking RH5 6DU

01372 388422

bookings@therunninghorses.co.uk

npd

REFURBISHMENTS

Bathrooms • Plastering • Tiling • Kitchens



We can offer specialist services or complete project management including inspirational design ideas. No job is too big or too small.

What you can expect from NPD Refurbishments:

- Close attention to detail and true craftsmanship with trusted testimonials
- Use of high-quality materials yet working with suppliers to obtain the best possible prices
- Use qualified and reliable contractors where necessary
- Unlimited options and flexibility to allow changes throughout the building process
- Help and advice in selecting amenities and options you will be happy with
- Constant communication to keep aware of project status
- Down to earth approach but high level of workmanship
- A tidy job environment to minimise disruption
- An open, comprehensive and honest quote

01403 738103

npdrefurbishments.com

07917 457286