

MICKLEHAM PARISH Magazine

A community magazine for Mickleham and Westhumble



A.N. Colwell 1984

December 2021

PROFESSIONAL CARPET & UPHOLSTERY CLEANING

- ✓ Local family running company
- ✓ Over 100's 5-star Reviews
- ✓ Award-Winning Customer Service
- ✓ Safe for Kids, Pets, and the Environment
- ✓ Effective against dirt & stains from drinks, food, makeup, pets & more

**SURREY
MAIDS**

- | | |
|--|--------------------------------------|
| REGULAR CLEANING | DEEP CLEANING |
| • Professional Equipment • | • Moving out/in services • |
| • Trained Staff • Task List Provided • | • Seasonal Cleaning • Tenancy • |
| • DBS Checked • Fully Insured • | • Oven Cleaning • Windows Cleaning • |
| • Flexible Hours • Easy Payments • | • Commercial Cleaning • Schools • |

PATTY PLUS 01306 866288
SERVICES LTD OFFICE@PATTY.PLUS
WWW.PATTY.PLUS

Bullimores



Accountants for Life
Tax • Accounts • Probate
Inheritance Tax &
Executorship

T: 01306 880880

E: partners@bullimores.co.uk

W: www.bullimores.co.uk

Bullimores LLP licensed to carry out the reserved legal activity of non-contentious probate in England & Wales by the ICAEW

**MERRY FESTIVE
TIMES TO ALL,
YOUNG & OLD,
LARGE & SMALL**

01306 889932

steppingstonespub@gmail.com

www.steppingstonesdorking.co.uk

Stepping Stones

MORE THAN JUST A PUB

RESTAURANT & ALFRESCO DINING

CAFÉ-LOUNGE BAR

GARDEN WITH MARQUEE AND OUTSIDE HEATING

POP UP GENERAL STORE

SERVING BASIC ESSENTIALS, FRESH FOOD, GROCERIES AND LOCAL PRODUCE

TAKE OUT / INTRODUCING LOCAL DELIVERY

CHRISTMAS MENU AVAILABLE - BOOK EARLY

OFFERING LOCAL GINS-ALES-WINES AND CHEESE

OPEN FROM 11 AM

Please place your pre-orders before 3pm for
deliveries and takeouts for the evening

Sherlock Funeral Service

*Sherlock Funeral Service is an
Independent family owned business,
established over 100 years*

- Private Service Chapel & Rest Rooms
- Home visits arranged if required
- Pre-Paid Funeral Plans available
- Free Parking

Telephone: 01306 882266

Trellis House, 190 South Street, Dorking RH4 2ES.

Email: office@sherlockandsons.co.uk



Funeral Directors & Monumental Masons

MICKLEHAM PARISH Magazine

Mickleham Rectory

December
2021

Mickleham Parish Magazine

A community magazine for
Mickleham and Westhumble
published under the auspices
of Mickleham PCC with an
independent editorial panel.

The magazine is published at
the beginning of each month
except January and August.

COPY DEADLINE
FEBRUARY MAGAZINE
Sunday
9th January

send to:

Sue Tatham

St Anthony, Pilgrim's Way

Westhumble

Dorking RH5 6AW

01306 882547

editor@micklehammag.co.uk

Contributions in any form
are welcome as are good
quality photographs. There
is no charge for advertising
local charity and community
events. However the editors
reserve the right to shorten
omit or reformat articles
submitted for publication
depending on space.



Printed by Holbrooks Printers
Portsmouth

Dear friends

It is now the season of Advent which brings home the thought that Christmas is coming and soon! You do not need me to remind you I am sure but I hope that you will not mind a little reminder about what Christmas is all about. After the past 18 months or so since Covid came many of us are really looking forward to and hoping for a Christmas without restrictions so that we can enjoy meeting people, meals out, entertaining and carol singing without masks. Christmas is about sharing love.

God's love is something that there is never any restrictions on. It is freely available to all, freely shared to all who are open to receive. This year the Church of England are using the strap line 'At the Heart of Christmas' to remind us of that precious gift of love.

That first Christmas so long ago, the angels announced to the shepherds good news of great joy. The gift of Jesus, the longed-for Saviour was and is good news. God loved us so much that he came amongst us as a baby and is with us still through his Spirit. The Jesus who walked this earth as boy and man has experienced good times and bad and has known love, rejection, friendship, loss and betrayal. He understands how we feel and cares for us and about us. This has been another tough year for many, especially for those who have lost loved ones, or who have been separated from loved ones or who are struggling in some other way. Some may be dreading Christmas and others really looking forward to it but no matter what our situation the birth of Jesus is a gift which can bring us both comfort and joy.

But Jesus did not just come for us; he came for the world. The creator entered his creation in the incarnation and became one with us in order to redeem not only humanity but the whole of creation. The love of God extends beyond you and I and includes every living thing and every small detail of our world. We have been given the gift of our natural environment to enjoy but we have also been given responsibility to care for it. It is precious to us and even more precious to God and yet we have neglected it. I am cautiously encouraged by some of the outcomes from the COP26 conference in Glasgow recently, but we do need to pray that governments stick to their commitments and that we will all do what we can to avert what is an impending crisis. We need to recognise too the impact on the very poorest of both environmental damage and excessive consumption.

Taking care with our shopping; our activities and our choices of food and drink can all make a difference. Why not do a little research and plan ahead to assist in selecting products which are environmentally friendly, and which will support the poorest people of the world. We can help for example by buying Fairtrade and charity products. This Christmas let us try to not only bless each other but God's world and all who live in it.

May we be able to celebrate Christmas this year confident of the unrestricted love shown by God that first Christmas and doing what we can to share that love. As we meet in church, at various village events and with our families and friends, let us welcome the Saviour of the world who is the 'Heart of Christmas'.

God Bless you and those you love this Christmas and throughout 2022.

Sandra

The Rev Dr Sandra Faccini, Parish Priest

Main working days: Monday, Tuesday and Sunday

Phone numbers: 01372 417664 and 07763488861

Email: parishpriest@micklehamchurch.org.uk



A Prayer for the New Year

*Lord, You make all things new You bring hope alive in our hearts
And cause our Spirits to be born again. Thank you for this new year
For all the potential it holds. Come and kindle in us a mighty flame
So that many will experience your love and praise Your glorious name.*

Amen

(Adapted from www.lords-prayer-words.com)

Afghanistan Humanitarian Crisis

The PCC has agreed to make an immediate donation of £1,000 to the Afghanistan crisis through the Save the Children charity (savethechildren.org.uk then 'Afghanistan Crisis'). We would urge all residents of our parish to consider making additional personal donations to help alleviate what looks like being a dreadful humanitarian crisis. Please give generously now!

Whatsoever you did for one of the least of these brothers and sisters of mine, you did for me.
Matthew 25:40

There are many other charities to choose from if you want to make a donation.



Save the Children



St Michael's Church Services

See calendar on centre pages for details of all services

10 am Sunday Services also available on Zoom

Joining information for both Zoom and telephone users is available in Pews News Online each week. If you would like to join us by Zoom then contact Alison Wood for the codes or to ask her to include you on the emailing list for Pews News: admin@micklehamchurch.org.uk / phone 01372 376443. We hope as many of you as possible will be able to join us for worship.

Please refer to Pews News Online for the latest information. If you missed any of the services, or would like to revisit them, all are available on the church YouTube channel:

<https://youtube.com/channel/UCI4pbewCT91iZhcd0EjJBIw>

A Challenge for New Year: Volunteers Needed

Funeral Co-ordinator

Co-ordinating funerals is a key service to the church and the community, we are looking for someone to undertake this role. It involves liaison and communication skills. If you would be interested in serving the community, please contact Sarah Blake on sarahjbl@outlook.com

The Eco Group

The church is establishing an eco group to promote the Church of England's environment and climate change policy. Several experienced people have already agreed to join this group, and we are now looking for one or two others – particularly younger people – in the community who are interested in this area. If that is you, and you are

willing to commit to meetings every two months, plus helping organise events or projects undertaken via the group, we would love to hear from you. Please contact Tim Mathieson churchwardens@micklehamchurch.org.uk, or 07555 597 163.

Flowers and cleaning at St Michael's Church

Our church already benefits hugely from the loving care already provided by our volunteer flower arrangers and cleaners. However, as always, we would appreciate more people to help. Do you have some time and interest to help us do this? There will be a rota in place across the year. If you can help, please contact Sarah Blake sarahjbl@outlook.com

Children's Christmas Workshop

Sunday 5th December

St Michael's School at 9.15 am

followed by

Christingle Service

St Michael's Church at 11 am




The Crib Service, Christmas Eve at 4 pm

The final preparations are under way for our annual Crib Service but we still need battalions of angels, flocks of shepherds and a camel train of Wise Men. Children and adults alike are welcome to come suitably dressed so seek out your old tea towels, curtains and dressing gowns and join us. Please remember it will be the middle of winter, so dress warmly and bring a torch, even angels wear wellies! This year in a slight deviation from the past, it would be lovely to include adults as well as children as readers and in the tableau. We hope that this little change with tradition will encourage more people to join us.

We will be starting our procession at 4 pm on Christmas Eve at the junction of Adlers Lane, Burney Road and Chapel Lane and will process to the

Westhumble Bonfire Field where we will form a tableau to depict the story of Jesus' birth in that humble stable in Bethlehem. Along the way there will be readings and carols which help tell the story.

If you have not been before, make this the year you join us to experience something truly delightful. The Crib Service is not just for children; everybody is welcome. Following the service, which will last no more than 40 minutes, there will be refreshments and the opportunity to exchange greetings with all your friends and neighbours.

The retiring collection this year will be in aid of the Leatherhead Youth Project which aims to help young people, particularly from North Leatherhead, achieve the necessary experience and life skills to help them into work when



they leave school. If you, your family or your child would like to take part, please contact Anne Weaver as soon as you can. We look forward to seeing you all on Christmas Eve.

Anne Weaver, 01306 883932, email weaver_anne@hotmail.com

Men's and Women's Saturday Breakfasts

THIRD SATURDAYS

A social gathering open to everyone...

18th DECEMBER AND 15th JANUARY 9 – 10 AM

MEN'S BREAKFASTS

THE RUNNING HORSES

Book with: Andy Diamond
diamo1@hotmail.co.uk

WOMEN'S BREAKFASTS

THE STEPPING STONES

Book with: Stephanie Randall
0773 6933 482
srandall55@gmail.com



First Saturday of the month

Coffee Morning at Westhumble Chapel

Saturday 4th December

Come along between 10 am and noon for coffee and cake £1. Free drinks for children

Saturday 1st January

Today there will be bacon butties as well as cakes

Everyone welcome

For further information call Jonathan Blake 07787 126966

Bible Study Groups

Advent Course 2021 LIVING IN THE LIGHT

Tuesdays

30th November to 21st December
(4 sessions)

7.15 pm - 9.15 pm

at John & Mary Banfield's
Garden Corner, Old London Road,
Mickleham

All welcome. Tea, coffee, soft drinks, biscuits and interesting discussion. It does not matter if you cannot make all the sessions or if you have never been to one of these groups before.

Just come along.

Contact Amanda Wadsworth
aewadsworth@hotmail.com

Thursday Morning Study Group

Meeting at the Chapel
11 am - 12.30 pm

Advent Course

Meetings will resume on 13th January continuing with the study of the

Twelve Disciples

Contact Alison Wood
01372 376443

Alison.wood29@btinternet.com

Superb professional
cleaning of carpets
oriental rugs
upholstery curtains
and leather
Guardsman
anti-stain protection

- spot stain and odour removal
- leather cleaning specialists
- flame retarding
- dust mite reduction service
- all work fully insured & guaranteed

For a free no obligation quotation call today
Freephone 0808 144 9071
John Joannides 28 Bracken Close Bookham

Safeclean
The furnishing care specialists from GUARDSMAN



*Pinehurst
Rest Home*

*We aim to provide an excellent service at
competitive rates supporting emotional physical
and social needs of our clients always respecting
and protecting their status as adults.*

- Residential and 24-hour daycare
- Excellent cuisine
- Facilities for disabled: medic bath / lift
- Home doctor in attendance
- Single & sharing rooms
- Convalescent & short stays
- Lounge with TV & piano
- Separate dining room
- Physiotherapist chiropodist & hairdresser
- Entertainment: theatre visits / parties
& cabarets held on premises

**National Trust Road Box Hill
Mickleham Dorking Surrey RH5 6BY**
Telephone: 01306 889942 / 888253

*Dorking
Decorators*
PROFESSIONAL
PAINTERS & DECORATORS

Established Local Family Business

- Over 20 years' experience
- Internal & External
- Commercial & Domestic
- Friendly, First Class Service
- Surrey / Sussex/ Greater London

**FREE ESTIMATES
01306 640418**
www.dorkingdecorators.co.uk
As approved by Checkatrade

CHRIS HULME
Garden Machinery

Service and repair of all makes and models of:

- Ride-on mowers
- Rotary mowers
- Cylinder mowers
- Chainsaws
- Strimmers
- Hedge cutters
- Rotavators
- Blower vacs

*Quality secondhand machinery
Collection and delivery service*

The Barn Cowslip Lane Mickleham 01372 377757 / 07950 961606

• Quality Flowers • Personal Service • Customer Satisfaction •

FLOWERS by ELAINE

- Wedding Specialists •
- Qualified Florists • Fresh Flowers & Plants • Local Delivery •
- Varied Gift Selection • Corporate Functions • Special Occasions •
- Funeral Tribute Specialists • Interflora Worldwide •

66 High Street, Dorking, Surrey RH4 1AY
T: 01306 883511 • E: fbe@btconnect.com
www.flowersbyelaine.co.uk



SIMON HOOPER
For all your decorating needs...

Professional friendly and speedy service at all times

- | | |
|--------------------------|-----------------------------|
| Fully insured | Insurance work |
| Exterior painting | Interior decorating |
| Free quotes & advice | Oil & Water-based products |
| Commercial/Domestic work | Wallpaper hanging & removal |

07947 135 376 0208 3978 962
www.slhdecoratingservices.com



St Michael's Church Community Group

Group Membership

The Group members and their contact information are listed at the centre of this magazine. Tim Mathieson, one of our churchwardens, has joined the group as joint chair to improve our administration and task definition. But we are still short of a Westhumble resident, which would help with parish inclusivity and communication and sharing of the ever-dwindling pool of available volunteers. Please contact a group member if you would be keen to assist.

Advent Windows

At the time of writing, slots are gradually being filled for this year's programme which will, assuming there are no Norwegian tree blockades, be declared open by our new parish priest, Sandra, who is going to turn on the church Christmas Tree lights on the first day of Advent on the evening of Sunday 28th November, at 6 pm. Adjournment to the newly appointed Running Horses is a distinct possibility.

Thereafter, window displays will have been allocated on as many evenings of the four weeks up to Christmas as possible. There might be the odd day still available so, if you took part last year, windows can be recycled. Indeed this is to be encouraged. If this will be your first year, welcome. Please book through annie@micklehamhallfarm.co.uk or wdwdennis@icloud.com You have a free hand on window design and do not be worried about such inhibiting factors as 'taste'.

A list of venues with an accompanying plan is hopefully now circulating on WhatsApp/PewsNews, on notice boards, the pubs and on various trees around our parish. A programme of window dates will be available at each of the early windows.

With the restrictions last year, numbers attending the opening nights of each window were restricted by Covid. Things are a bit more relaxed this year and mince pies and mulled wine, served outside, may be more widespread but are not essential. The big plus will be for people to cross the A24, and hopefully, put faces to names of initials known only on WhatsApp sites.

This is also a great way to lead us up to the St Michael's Christmas events mentioned elsewhere in the magazine.

Church Christmas Trees

Despite only being operational for less than a week, Manu, the new owner of The Runners' has agreed to continue with sponsoring the church Christmas Trees for 2021, with them illuminated on Sun 28th November. Thank you very much. And of course, thanks to Jason Wilson for getting the trees in place and on time (hopefully, as I write three weeks in advance).

Next Events – 2022

Group members are awash with ideas for new community events, but we are always more than happy to receive ideas from others.

The main event of next year is likely, all things being well, to be a celebration of our Queen's Jubilee, this will be around the extended holiday at the beginning of June. Several things are being considered: a street party, fête, BBQ and band, and picnic are all on the list, and various combinations thereof. The Community Group will have settled on something and started recruiting assistance/detailed planning by the time of the next magazine.

Before that however an event is planned to brighten up February a bit. A 'Sausages and Skittles' evening competition has been penciled in for the weekend of the 19th. This is West Country Pub Alley Skittles: 9-pin not 10-pin! A bar will be available and sausages in all their guises, including vegan, will be served. Team leaders will be chain-ganged shortly, it might even be an inter-village competition, or possibly teams assembled by leaders of various formal (eg Choral Society) and informal (eg Running Horses) groups.

Sundays at Six

By the time you read this, the first of a new programme will have been completed. We hope this will be the first of several in 2022. Please do give these events good support, they are well worth it and most enjoyable. For some of the younger musicians, which Tracy Kennington somehow persuades



to come to St Michael's, this is their debut appearance in 'concert'. There is a retiring collection to cover costs or go to selected charities, but 'just turn up'.

FoodBank

Thank you everybody. There has been a marked increase in giving over the last two weeks, and bags have been flying in all directions. This is great news as winter starts to kick-in.

Dorking Foodbank is running an Advent Giving calendar this year with suggested items for each day of December; it is emphasized that they are not looking for partridges on the first day, but on December 1st, their suggestion is tinned vegetables with tinned meat on the 3rd etc. Keep your eyes open in PewsNews and on WhatsApp for the requirements for specific days. We may link this to the Advent Window calendar.

We also hope to have some specific suggestions for Christmas giving aimed directly at our local charities. The Meeting Room in Leatherhead is holding its Christmas Lunch again this year in Fetcham Village Hall, and we may have some specific contribution we can make to this. Last year, because of Covid, two of our number delivered Christmas dinners to home addresses.

Mark Day

**Public told to plan ahead for
Christmas due to supply
issues, forcing majority of
men to bring their shopping
forward to Dec 23rd.**

Christmas Trees: a bit of history



Prince Albert, Queen Victoria's consort, is often thought to be responsible for introducing the Christmas tree to England in 1840 but it was earlier, in 1800, that Queen Charlotte the German wife of George III set up the first known English tree at Queen's Lodge in Windsor.

So when and how did the tradition start? Martin Luther is said to have been walking in a pine forest near his home in Wittenberg when he saw thousands of stars glinting through the trees, such a wondrous sight that he set up a candle-lit fir tree at home to

represent the starry heavens and to remind his children of their Saviour. From this time on, boughs of evergreens began to make their appearance at Yuletide, firstly in the parlours of Southern Germany where they were decorated with objects such as roses cut out of coloured paper, apples and sweets. In other parts of Germany it became the custom to bring in box trees or yew branches on Christmas Eve. The poet Coleridge writes of witnessing this in 1798 when the children of the family covered a yew bough with 'little tapers... and coloured paper fluttered from the twigs'. Presents for their parents were laid out underneath.

This is the custom Queen Charlotte introduced in 1761 when she came over to England to marry King George but she transformed the yew branch ritual into a much more public celebration that could be enjoyed by the English Court and all the members of the Royal Household. Decorated by the Queen herself, and lit by wax tapers, the gathered Court would sing carols; the festivities ended with gifts such as jewels, toys and sweets being distributed.

1800 saw Charlotte planning a huge Christmas party for the children of all the principal families in Windsor. Instead of a bough, she brought in a whole tree that she hoped would

transport the children into fairyland. It stood in the middle of her drawing-room at Queen's Lodge and was richly decorated with tinsel and glass trinkets as well as sweetmeats, fruits and toys. After walking round and admiring the tree the children were given sweets and toys from its branches before returning home 'quite delighted' we are told by a captivated eye-witness to the scene.

The custom rapidly spread to the aristocratic families of the day. Any evergreen tree would serve the purpose. Some were displayed on tables, others decorated great halls and ballrooms but the tradition was firmly established in society by the time of Charlotte's death in 1818 and when Prince Albert brought over several spruce trees in December 1840 the custom gained in popularity. Periodicals such as the *Illustrated London News* went into minute detail about the trees in the Royal household and soon the middle classes, keen to emulate the Royal family in their own homes, were putting up trees in their parlours.

Today, we very much still embrace the custom even though our trees seem to go up earlier and earlier, long before Christmas Eve as used to be the custom and I daresay many of them are down and sent for recycling long before Twelfth Night!

Judy Kinloch

Christmas Activities – Dates for your Diary

SPECIAL SERVICES IN ST MICHAEL'S CHURCH

Christingle Service

Sunday 5th December - 10 am

Carols by Candlelight

Sunday 19th December – 6.30 pm
Readings and Carols

Christmas Day Family Service

Saturday 25th December – 10 am



The Christmas Café

returns to

Westhumble Chapel

Saturday 11th December 2 to 4pm

- Craft stalls • Mulled wine • Teas
and plenty of community chat

If you would like a stall, please contact:
Jenny Hudlass jennyhudlass01@gmail.com

No charge, donation only

All welcome. Do come along

Christmas Carolling



in the Chapel ruins

Chapel Lane, Westhumble

Tuesday
21st December
6 pm

followed by drinks
and nibbles at
Chapel Farm
courtesy of John and
Liz Absalom.

Collection for the
Gambian Donkey
Sanctuary charity.



Carolling Round the Pubs

Friday 17th December

Join us for Carol singing at one or more of the
pubs in Mickleham and Westhumble.

We will be singing outside rather than inside
so dress appropriately.

Starting 7.15 pm at Stepping Stones
8 pm at Running Horses and
8.45 pm King William IV

Jonathan Blake 07787 126966

MICKLEHAM CHORAL SOCIETY

CAROL PARTY

A lively mix of festive carols old and new followed by
refreshments and mulled wine



Friday 10th December

Mickleham Village Hall 8 pm

Mask wearing is encouraged

Tickets £12 including refreshments - £6 children 12 and under

Available from Anne Weaver

01306 883932 secretary@micklehamchoral.org.uk



- Bespoke dress making
- Soft furnishings
- Clothing alterations
- Curtains
- Sewing lessons
- Roman Blinds

Contact Tracey: 07511 079441
traceyssewingroom@gmail.com

Treeline Services Ltd.
**YOUR LOCAL PROFESSIONAL
TREE HEALTH CARE SPECIALISTS**

Felling, Pruning, Stump Removal, Planting, Logs,
Woodchip, Air Spade Services, Consultancy

Call us on **01306 741800**
office@treeline.co.uk • www.treeline.co.uk

Your visiting
PHYSIOTHERAPIST
SUE JUDD MCSP HCPC
40 years of experience.
All your requirements for elderly
mobilisation & post-operative
rehabilitation.

07834 227999 sue-judd@sky.com

EDE BROS
REMOVALS • STORAGE • SHIPPING

• Since 1926, Capel-based and family owned
• STRESS-FREE, local, national & worldwide
• Contact us for your **FREE** estimate...

01306 711293
edebros.co.uk

Aspen LIVE IN CARE

Gill and Paula would like to warmly welcome you to Aspen Care offering assistance to enable you to live in the comfort of your own home with care and companionship.

- A happy alternative to a care home
- Cover while your family or carer takes a holiday
- Recuperation and rehabilitation following a hospital stay
- All aspects of personal care medication and meal prep
- Dementia care disability chronic & critical conditions end of life care
- Accompaniment to appointments

Call for a chat to discuss your requirements.
We look forward to hearing from you.

01737 354821 info@aspenliveincare.co.uk www.aspenliveincare.co.uk

P J Oliver & Son

Window cleaning
House & Garden Maintenance
Roof Repairs, Guttering
Painting & Decorating
Ground works, fencing, hedge cutting,
and tree work
Also Pest control

Call Phil on 07722 158111
Email Oliviagarrett79@gmail.com

village greens farm shop

**YOUR LOCAL FARM SHOP
ON DENBIES WINE ESTATE**
farm shop deli plant centre

Open daily 9.30 to 5.30 and Sundays 10 to 5 Free parking Closed from 25th Dec – 4th Jan

Order now for Christmas: free range turkey; veg; cheese: Ask in shop or see our website
LOCAL PRODUCE : Chalk Hills Bread; Mandiras Kitchen meals; mince pies; Christmas trees
We deliver veg bags and more to the local area on Tuesdays and Fridays
see www.vgfarmshop.com or email vegbag@vgfarmshop.com for details

LOCAL • NATURAL • ETHICAL 01306 880720 www.vgfarmshop.com



Warmest Christmas wishes
and a happy & healthy
New Year to
all our local friends

Bernie & Denis Bailey, Mary & John Banfield,
Jo Brown, Cathy Cain, Andy Diamond,
Rosemary Glover, Val & Mick Hallett
Barbara & David Jones, Frances Presley,
Stephanie Randall, Fiona Roberts-Miller,
Julia & Richard Siberry, Rose & Stan Spence,
Amy, Simon, Martha & Verity Ward,
Sue & Ben Tatham, Elizabeth Watson,
Judy & Brian Wilcox

Again this year we are sending our Christmas greetings through the parish magazine
and giving the money saved on cards and postage to charity.
The £300 money raised by this MPM Christmas card has been split between
St Michael's CofE Infant School and St Michael's Community Nursery

Coming Events

**Christmas Wreath and Bottle Garden
Workshop**

Saturday 11th December
9.15 am – 12.30 pm Mickleham Village Hall **Booking essential**

Mark Dobell

Climate Change Through a Gardener's Eyes

Monday 24th January 2022 7.30 pm
The Stepping Stones Pub, Westhumble.
Tickets £6 on the door – no need to book

Pauline Davis 07759 646353 paulinemdavis@gmail.com
Susie Gowenlock 07768 923088 susiegowenlock@gmail.com



Please support the Food Banks - the need continues

LOCAL FOOD BANK COLLECTION POINTS

MICKLEHAM Garden Corner off Old London Road Mary Banfield 01372 373912	WESTHUMBLE St Anthony, Pilgrim's Way Sue Tatham 01306 882547
---	---

Garden Shed Trip Leonardslee House and Gardens

A group of Garden Shed members enjoyed a fascinating outing to this 240 acre estate and mansion house, only a 25 minute drive from the parish to the outskirts of Horsham.

The history of this land dates back to c 1685, when King Charles granted St Leonards Forest to Sir Edward Greaves. In 1852 William Edgerton bought the estate and built the present mansion, and developed the land. In 2010 the estate was closed and fell into neglect. Thankfully it was bought in 2017. The new owners are making great strides in clearing the grounds; and extensive restoration is ongoing.

We had a guided tour of the Grade 1 listed grounds which are extensive, and one could easily spend the day just exploring. The rock garden was first built in 1890, and houses many azaleas.

At the lower ground you find a succession of lakes. What better way to walk around in the autumn and see the hues of copper and gold reflected in the calm water. They have a buggy

that regularly takes people to the top again, but our group walked up admiring the sculptures around the land.

There are 80 bronze, resin and steel, sculptures made by Anton Schmidt. He has loaned his collection for three years to Leonardslee. His theme is 'A Walk of Life', and was brought over from South Africa, where he lives and works. Sadly he still has not visited to see them in place.

At the top of the hill you will find England's first Pinotage Vineyard. The vines were planted in 2018. The first harvest took place last autumn.

We would thoroughly recommend a visit. Rather than mention everything we saw and learned about, here are some photos to convey the diverse attractions of these fine gardens.

Leonardsleegardensgardens.co.uk

Photographs of autumn colour, wallabies and sculptures by various people. Thanks to all.



History in a Drain Cover

In the garden at Fairfield, which we are currently extending and renovating, there are three drain covers with Wilkinson Builders Dorking cast into them. The deeds to the house record that Nathaniel George Wilkinson built the house and sold it to Walter Kottersch, a company secretary, in 1938.

Wilkinson was the great grandfather-in-law of Rose Spence whom long established residents will remember. Rose told me recently that Nathaniel Wilkinson was Chairman of the Dorking Urban District Council and Surrey Council. He lived at Fairways in Dorking on the site of the newish nursing home by the Cockerel roundabout.

Wilkinson built many of the houses in Westhumble including Fairfield and Woodbury on the east side of Pilgrims Way where Rose used to live. Perhaps

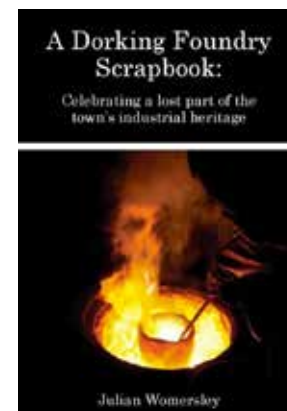
you have Wilkinson drain covers, or any other named covers, in your garden. If so I would love to hear from you as I am slowly, very slowly, trying to compile a history of the building of the Westhumble estate. Email me at davidandbarbaraj@btinternet.com phone 07801 951 946, drop a note through the door or knock if you are passing and our black car is in the drive. Any information about the history of your house would be most welcome.

Of course there are also drain covers in the roads around Westhumble including those of Long Humphries, Chertsey and Dorking Foundry* along Adlers Lane; DF along Chapel Lane. Others include Frank Harris Bros of Guildford, Morrison Roads Ltd of Woking, and Sutton & East Surrey Water Company.

Barbara Jones

Do you have an unusual hobby?

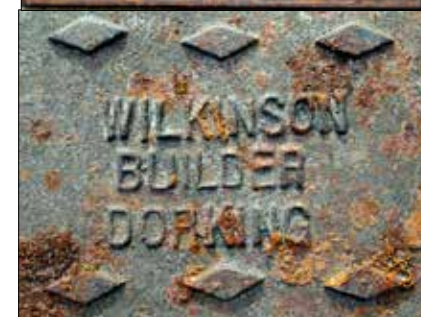
When Barbara mentioned her interest in drain covers, naturally we asked her to write about it. If you have a similarly unusual hobby, please get in touch. We would very much like to hear about it.



* New from the Cockerel Press

Like all good scrapbooks, the Dorking Foundry Scrapbook is a serendipitous collection of snippets from the past: in its pages, photographs, press cuttings and other ephemera are brought together to tell the story of the Dorking Foundry and to celebrate a lost part of the town's industrial heritage.

Published 2021. 52 pages with 59 illustrations (36 in colour). £5.50 at Dorking Museum and online via the museum's website.



All Saints Coffee Shop

Seven years ago we set up AllSaints to provide disadvantaged young people from North Leatherhead with a healthy launchpad into working life. Coming out of the pandemic, we have been seeing that local 16+ year olds have a unique set of needs different to previous generations and to be able to best support them we need to adapt our offer. The time has come to re-evaluate our current provision to make sure we are supporting local young people to the best of our ability.

This has led us to take a step back and

make the decision that now is the right time to close AllSaints' doors. Going forward we will be investing in finding new sustainable and innovative ways that will enable us to support the next upcoming cohort of local 16-to- 20-year-olds. We are really excited for what the future will hold as we work more closely with our young people to shape a new offer.

We feel incredibly blessed that for the last seven years we have been able to be open six days a week, providing life-changing support for 25 young people. We could not have done this without the generous support of our community, regularly visiting the coffee shop and supporting us where you

could. This has enabled so many local young people in North Leatherhead to reach their full potential and for this we will be forever grateful.

We will be celebrating our last week of AllSaints from 6th – 11th December and would love to see you! We will be open from 8 am – 3 pm as usual with our full offering available from 6th – 10th December. On Saturday 11th December pop down to purchase an AllSaints coffee and slice of cake with the chance to congratulate our amazing team on all they have achieved.

We look forward to seeing you then to celebrate everything AllSaints has meant to our local community and young people.

A Confidential & Safe Space to Talk

Counselling • Mind & Body Healing
Reiki • Relax into Nature Sessions
Online/Outdoors/Distance

Supporting you with compassion and
understanding through challenging times



Call Judith Cobby
on 01306 882229
or 07790 614448

www.healing-inspiration.co.uk



A local, award-winning business
supporting people living in Epsom
& Mole Valley, enabling them to
remain living independently AT
HOME as well as providing
companionship and colour to peoples lives.

RATED AS OUTSTANDING BY CARE QUALITY
COMMISSION

Committed to providing a quality, trusted and consistent
home care service, we only recruit local CareGivers
and match every CareGiver to every client so
the same person will call each time.

01372 741544 paul.tame@homeinstead.co.uk
www.homeinstead.co.uk/epsom

Ballroom Dancing Latin American Dancing Professional Training [IDTA]

Private lessons only on
Tuesday afternoons and
Sunday evenings

[with a one-hour practice session starting at 8pm]

At Mickleham Village Hall
Dell Close Mickleham Surrey RH5 6EE
07748 867 732

vmvdancing@gmail.com



IDTA Qualified Teacher

TIM LANGLEY

Experienced craftsman

ANTIQUE RESTORATION
CABINET MAKING
FRENCH POLISHING

Free estimates collection & delivery

01372 457700 07960 486455

Rowlatt Garden Services

RGS

EST. 1985

**Gardens large and small
we maintain them all**

All aspects of private and commercial garden
and estate maintenance landscaping undertaken
Fencing grass & hedge cutting

Telephone: 01737 841524 Mobile: 07887 838666

References available upon request

SHOP LOCAL WITH SEACHANGE



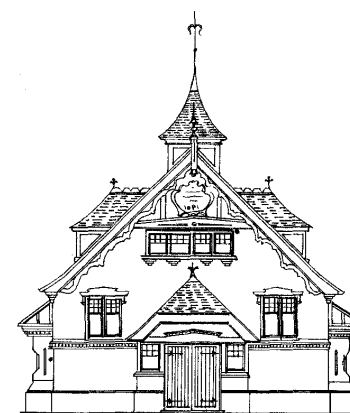
We are passionate about two things: protecting our
oceans from plastic pollution and great tasting wine.

- Award-winning wines from around the world
- Vegan and vegetarian options
- Supporting ocean conservation projects
- Minimal, eco-friendly packaging
- Plastic free

THE SURREY-BASED ECO-CONSCIOUS WINE RANGE

CONTACT US ABOUT FREE LOCAL DELIVERY

+44 (0) 1372 454910 - HELLO@SEACHANGEWINE.COM - WWW.SEACHANGEWINE.COM



Mickleham Village Hall available for hire

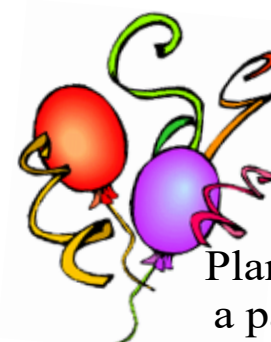
Hall bookings
Table & chair hire

Deanna Darnell

07790 941 601

bookings@micklehamvh.co.uk

www.micklehamvillagehall.org.uk



Planning
a party?

Equipment
available for hire

China ~ Cutlery

Electric urn

Equipment hire
Mary Banfield

01372 373912

admin@micklehamvh.co.uk

Community Directory

BOX HILL AND HEADLEY HEATH (National Trust)

Lead Ranger – Mark Dawson

01306 885502

mark.dawson@nationaltrust.org.uk

Friends of Box Hill – Chair Lyn Richards

01737 842889

lyn@mra.uk.net

BOX HILL SCHOOL

Headmaster – Cory Lowde

01372 374814

HMPA@boxhillschool.com

DORKING CRICKET CLUB

Chairman – Andrew Homewood

homewooda@hotmail.co.uk

DORKING GROUP OF ARTISTS

Exhibition Secretary – Patricia Booth

01737 24491

patriciabooth100@gmail.com

DORKING LAWN TENNIS & SQUASH CLUB

Jim Cattermole

01306 883629

jim.cattermole@uwclub.net

DORKING RUGBY CLUB

Jim Evans

07789 176417

jim@flintcottage.net

THE GARDEN SHED

Pauline Davis

07759 646353

paulinemdavis@gmail.com

07768 923088

susiegowenlock@gmail.com

JUNIPER HALL FIELD CENTRE

01306 734501

enquiries.jh@field-studies-council.org

Head of Centre – Maddy Jones

m.jones@field-studies-council.org

Friends of Juniper Hall – Suzy Hughes

01483 281935

suzy@suzyhughes.co.uk

MICKLEHAM CHILDREN'S PLAYGROUND ASSOCIATION

Secretary – Sarah Parfitt

07767 891772

sarah@sarahparfitt.com

MICKLEHAM CHORAL SOCIETY

THURSDAYS 8 - 10 pm – MICKLEHAM VILLAGE HALL

01372 373106

Conductor – Juliet Hornby

01306 883932

Secretary – Anne Weaver

www.micklehamchoral.org.uk

secretary@micklehamchoral.org.uk

MICKLEHAM OLD BOX HILLIANS FOOTBALL CLUB

Secretary – John Atewell

01372 374745

MICKLEHAM PARISH COUNCIL

SEE WEBSITE FOR MEETING DATES www.micklehampc.org.uk

Chairman – Rev'd David Ireland

01372 379381

rev.ireland43@btinternet.com

Parish Clerk – Feena Graham

clerkatmpc@gmail.com

MICKLEHAM PARISH MAGAZINE

Editor – Sue Tatham

01306 882547

editor@micklehammag.co.uk

Co-Editor – Charlotte Daruwalla

01306 884025

editor@micklehammag.co.uk

Administrator – Vacant

MICKLEHAM VILLAGE HALL

Chairman – Ben Tatham

01306 882547

chairman@micklehamvh.co.uk

Bookings Manager – Deanna Darnell

07790 941601

bookings@micklehamvh.co.uk



Personal Training and Pilates with Immie Adshead

L4 Qualified Coach

Optimize your Body Brain Connection
Maximise your Results

1-1, 1-2, small groups in the Surrey Hills

07935 674 588

immieadsheadpt@gmail.com

www.thebodybraincoach.com



ST MICHAEL'S CHURCH

*within the United Benefice
of Leatherhead and Mickleham*

INCUMBENT- VACANT

PARISH PRIEST

The Rev Dr Sandra Faccini 01372 417664
parishpriest@micklehamchurch.org.uk

CHURCHWARDENS

Sarah Blake 07736 235709
SarahJB1@outlook.com

Timothy Mathieson 07555 597163
TimothyMathieson@aol.com

PARISH ADMINISTRATOR

Alison Wood 01372 376443
admin@micklehamchurch.org.uk

PCC SECRETARY

Elizabeth Moughton 01306 883040
pccsecretary@micklehamchurch.org.uk

TREASURER

Richard Siberry 01372 375303
pcctreasurer@micklehamchurch.org.uk

ORGANIST

David Fishwick 0208 773 2420
organist@micklehamchurch.org.uk

WEDDINGS CO-ORDINATOR

Elaine Machin 01372 724972
weddings@micklehamchurch.org.uk

BAPTISMS CO-ORDINATOR

Vickie Leney 01306 884054
baptisms@micklehamchurch.org.uk

FUNERALS ORGANISER

Brian Wilcox 01372 374730
dbrianwilcox@btinternet.com

WEBSITE MANAGER

Sarah Ward 01372 383350
website@micklehamchurch.org.uk

www.micklehamchurch.org.uk

*For information about services for other
denominations see website pages.
Search on 'Churches Together Mole Valley'*

REGISTERS

BAPTISM

31st October Frederick Alexander Brett Loveless,
son of Robert and Charlotte Loveless

SERVICE OF THANKSGIVING

11th November

Henry Amyas Sherlock Willis



CALENDAR for December

1 Wednesday
4 Saturday 10 am to 12 noon
11 am-2 pm

5 CHRISTINGLE SUNDAY 9.15 - 10.45 am
*11 am
6 Monday 7.30 pm
7 Tuesday 7.30 pm - 8.30 pm
10 Friday 8 pm
11 Saturday 2 pm to 4 pm

12 SUNDAY 10 am
17 Friday from 7.15 pm
18 Saturday 9 am

19 SUNDAY 10 am
6.30 pm
21 Tuesday 6.30 pm
23 Thursday 7 pm

24 Friday Christmas Eve 4 pm
11.30 pm
25 Saturday CHRISTMAS DAY 10 am
26 SUNDAY 10 am

Advent windows start
Coffee at Westhumble Chapel
Community Nursery's Christmas Fair

Christingle Workshop at St Michael's School
Christingle Family Service *note later start
Advent Course at Garden Corner
Prayer Meeting in Church
Choral Society's Christmas Carol Party
The Christmas Café in Westhumble Chapel
Garden Shed Christmas Wreath and Bottle
Garden Workshop

Holy Communion
Carol singing round the pubs
Men's and Women's Breakfasts

Holy Communion
Carols by Candlelight in church
Christmas Carols in Westhumble Chapel ruins
Ex-Crew Get Together

Crib Service in Westhumble Field
Midnight Communion
Family Service
Holy Communion



January

1 Saturday 10 am to 12 noon
2 SUNDAY 10 am
9 SUNDAY 10 am
11.30 am

Copy deadline for February magazine

15 Saturday 9 am
16 SUNDAY 10 am
23 SUNDAY 10 am
29 SUNDAY 8 am

Coffee at Westhumble Chapel
Family Service
Holy Communion (Visiting clergy)
Morning Prayer at the Chapel

Men's and Women's Breakfasts
Holy Communion
Holy Communion
Holy Communion



Shoebox Sunday

At the Family Service on 7th November shoeboxes full of gifts were collected for this year's Samaritan's Purse Operation Christmas Child Appeal. More boxes are being donated by the families of St Michael's Infant School and students at Box Hill School.

The shoeboxes are distributed to children in need in many parts of the world. There is more information including a delightful film of children unpacking their boxes at <https://samaritans-purse.org.uk>

MEMBERS OF THE PAROCHIAL CHURCH COUNCIL

Sarah Blake Mark Day Andrew Diamond
Caroline Jones Vicky Leney Elaine Machin
Timothy Mathieson Elizabeth Moughton
Frances Presley Richard Siberry
Amanda Wadsworth Amy Ward

ST MICHAEL'S COMMUNITY GROUP COMMITTEE

Mark Day 07852 117249
mickleham@hotmail.com
Amy Ward 07709 199292
amycatrionaward@gmail.com
Mary Banfield 01372 373912
mgbbmw@aol.com
Andy Diamond 07789 775354
diamo1@hotmail.co.uk
Will Dennis 07903 842674
wdwdennis@icloud.com
Frances Presley 01306 882473
jasempres@gmail.com
Tim Mathieson 07555 597163
TimothyMathieson@aol.com

ST MICHAEL'S COMMUNITY GROUP HELPING HANDS

INCLUDING FOOD FOR FRIENDS

*A service for all residents
of Mickleham and Westhumble*

Examples of services we offer*:

- Essential shopping / collection of prescriptions
- Changing library books
- Small tasks: eg changing fuses, altering clocks etc
- Dog walking
- Visiting / befriending
- Home-cooked meals for local families going through difficult times

Requests to

Frances Presley 01306 882473

*More helpers needed – please contact
Frances if you can spare some time.*

Community Directory

Continued from page 13

MICKLEHAM & WESTHUMBLE BADMINTON CLUB	
Membership Secretary Sarah Blake	tinkerbell0044@hotmail.com
MICKLEHAM & WESTHUMBLE CRICKET CLUB	
Membership contact	Will Dennis 07903 842674 will@micklehamhallfarm.co.uk
MICKLEHAM & WESTHUMBLE HORTICULTURAL SOCIETY	
Chairman – David Kennington	01372 362309
www.surreycommunity.info/mwhs	davidkennington144@gmail.com
MICKLEHAM AND WESTHUMBLE LOCAL HISTORY GROUP	
Chairman – Ben Tatham	01306 882547 ben@thetathams.co.uk
	www.micklehamwesthumblehistory.co.uk/community/mickleham-westhumble-local-history-group-13483/home/
MOLE VALLEY DISTRICT COUNCIL	01306 885001
Councillor Elsie Rosam	01306 885695 elsierosam29@gmail.com
THE ARTS SOCIETIES (FORMERLY NADFAS)	
Betchworth – Mary Venning	01306 883301
Dorking – Sue Tatham	01306 882547
Leatherhead – Sarah Sheridan	01306 883699
ST MICHAEL'S CHURCH OF ENGLAND (A) INFANT SCHOOL	01372 373717
	info@stmichaels-dorking.surrey.sch.uk
Friends of St Michael's School – Chair Amy Rieley	friendsofstmichaels2017@gmail.com
ST MICHAEL'S COMMUNITY NURSERY	
WEEKDAY MORNINGS – MICKLEHAM VILLAGE HALL	
Supervisor – Hilary Budd	01372 361021 stmichaelsnursery@btinternet.com
SURREY COUNTY COUNCIL	03456 009 009
Councillor – Hazel Watson	01306 880120 hva.watson@btinternet.com
SURREY WILDLIFE TRUST	01483 795440 info@surreywt.org.uk
WESTHUMBLE RESIDENTS ASSOCIATION	
David Allbeury	07860 227451 westhumble.neighbourhood.watch@gmail.com
WESTHUMBLE NEIGHBOURHOOD WATCH	
Lead Co-ordinator – David Allbeury	07860 227451 westhumble.neighbourhood.watch@gmail.com
ADDITIONAL CONTACT INFORMATION	
CITIZENS ADVICE	
Dorking – Lyons Court	01306 732302
Leatherhead – Swan Mews High Street	01306 732301
CRIMESTOPPERS	0800 555 111
POLICE Non-emergencies	101
(often quicker to make online report) https://report.police.uk/	
Neighbourhood Specialist Team – Dorking Rural East	
General enquiries molevalley@surrey.pnn.police.uk	
NHS Urgent and emergency care	111

Babysitting by local youngsters

Those listed below are at least
14 years old.

Annabelle Prosser*	07443 634179
Maisy Presley*	07720 657327
Martha Pearce	07514 080005
Rory Lee **	07973 360 950
Ellie Kim	07773 395 575
Chelsea Edwards	07834 695816
Edward Moran	07740 088124

* Holidays only
** Parent's mobile number

If you would like to add your
name to this list please get in
touch with Sue Tatham
01306 882547

editor@micklehammag.co.uk
No Charge

Advertising in the Parish Magazine

Please contact
Sue Tatham (as above)
Small ads: a nominal fee is
charged for ads where items or
services are bought or sold.

We have been advised to print
the following reminder:
We cannot guarantee the
quality of the goods and
services offered by our
advertisers.



Our Joe and Joe's Buddy Line Charity

In September 2021, award-winning
radio producer Joe Lyons was
remembered in Mickleham Church
at a Celebration Service for his life.
The following has been written by his
parents who live in Givons Grove.

Never in a million years would we
have imagined what we would
now be doing. Our beloved son, Joe,
totally unexpectedly took his own life in
August 2020, aged just 31. His family,
friends and colleagues were, and still
are, completely shattered – no one saw
this devastating situation coming.

Although our heartache and pain will not
disappear, his family and friends wanted
to direct our energy in a very positive
way to create an effective charity in
remembrance and as a legacy to Joe.
Suicide in males under 45 years of age
is currently the biggest cause of death in
the UK. We decided to try to help young
people in educational settings, with
information and assistance for mental
health issues. Some of the trustees
have wide experience as governors of
outstanding Special Educational Needs
and Disabilities schools and within the
Youth Justice Service.

The approved charitable objectives
of Joe's Buddy Line Charity is to
promote and protect the mental health,
particularly but not exclusively, of
young people from primary school to
university throughout England and
Wales, by the provision of finance,
education, practical advice and support.

Joe was laid to rest at Mickleham
Church, but owing to Covid restrictions,

only a few family members and friends
could be present, not as we would
have wanted. With assistance and
understanding from the Rev'd Graham
Osborne and church members, a
Remembrance and Celebration Service
was held in September 2021 for the
many that could not attend previously.

The Celebration Service included a
short film 'Our Joe', produced by his
friends at Capital Radio, that can be
seen at <https://youtu.be/m95cl6LsU7c>
You may also like to see 'Our Silent
Emergency', the BBC film about Joe, his
personal and professional relationship
with Roman Kemp, the radio and TV
presenter, and mental health issues. It
was shortlisted for Best Documentary
at the National Television Awards 2021
and is available on BBC iPlayer.

Recently, the charity has been developing
a number of initiatives which will be
offered to schools and colleges. One of
these was the recent 'Mindfest' day at
Ashcombe School, Dorking. More than
700 attended with 35+ therapists and
organisations present including visits by
Sir Paul Beresford MP, local councillors
and police involved with children's
wellbeing. We hope the format can be
repeated in other educational locations;
several schools have already asked for
our help, and we will start rolling out
the new initiatives from early 2022.
However, it is clear from our discussions
with other institutions and charities
that, unfortunately, there is not a
'one size fits all' solution to the many
interrelated mental health issues for
every Institution.



We are on an important journey which
we trust will help young people needing
mental health advice and, when
necessary, more critical assistance. It
would be very helpful to hear from
anyone with charity experience who
may be able to assist us in any way,
especially if it relates to mental health
issues within educational settings at:
joesbuddyline@gmail.com.

Our website joesbuddyline.org gives
further information and a link to the
charity's Instagram pages with an
outline of our activities to date. If you
would like to help by donating, please
scroll down to the DONATE button on
the charity's webpage. Donations may
be gift-aided at no extra cost to the
donor.

We thank you very much for all the
support received both personally and
as a family over the past year and Celia,
Ivan and Louisa look forward to meeting
you again in the future.

Anna McNeill

Mary Allen writes: My mother,
Anna McNeill, sadly died on
27th October. She and my father, Nigel
McNeill, lived on Pilgrims Way from
1977 to 1999. She was very involved in
St. Michael's Church and was Cathedral
link for many years. She will be greatly
missed by Nigel, her daughters Mary
and Fiona and grandchildren Edward,
Matthew, Eilidh and Thorfinn.
Those who remember Anna will join
in sending deepest sympathy to Nigel
and his family.



Community News

Deepest sympathy to:

- Jennifer Louis of Westhumble Street on the death of her son, and to Michael and Nicholas on the death of their brother, Anthony in Moscow in October.
- Neil Alderton of Pilgrims Way on the death of his wife, Heather, on 12th November.

Welcome to:

- Stephen Tillie and Jillie Cooper who have moved to Adlers Lane, Westhumble from Edinburgh, via Wimbledon;
- Libbie and James to Byttom Hill
- Liam, Michelle and daughter Callie, also to Byttom Hill.

Mickleham Parish Council

As we emerge from lockdown over many long months and begin preparing for the festive season with great anticipation, we look forward to meeting up with friends and family and reflect on the year with Mickleham Parish Council. Our meetings have been full and in depth over the last 12 months, whether via Zoom or when we returned to face-to-face meetings.

The anticipated changes at Norbury Park at the start of the year were brought to a halt with January's lockdown. Following the last meeting, Surrey County Council have produced a document: 'Norbury Park Our Vision' which is available to download. The public were invited to make comments and the consultation period is about to close. We will get a summary of the responses in early January. The development of new trails and improvements to the Young Street carpark will happen in 2022. Plans for the sawmill site and Swanworth Farm are still aspirational and will become more apparent next year.

The proposals for community funding under the 'Your Fund' project were raised and two recommendations submitted by MPC: provision for equipment for teenagers in the Recreational Area in collaboration between Mickleham Parish Council and Mickleham Children's Playground; and secondly, signage and gates on Mickleham Downs to discourage joyriders and manage the area for all users. Discussions are ongoing with Surrey County Council and local landowners on this issue.

Set up at the start of lockdown in 2020, the WhatsApp Group now has more than 160 members. It continues to function as a platform to provide assistance to individual members as well as the exchange of local information and other issues such as the recycling of unwanted goods.

We welcomed the new owners of 51 Degrees North to our meeting in May. Like anyone trying to renovate or refurbish properties, they have met with delays and problems from planning to supplies. A much-anticipated opening in the New Year would be the culmination of many months of hard work and preparation.

A new MPC notice board replaced the worn out one at the bottom of Bytton

Hill and has proved to be very popular with the various village groups wanting to advertise their events.

Our Speedwatch campaign has continued its good work. During one of these sessions a car was caught travelling south down Old London Road at 52mph! Along with other speeding motorists this driver will have received a letter from the police. A vehicle activated sign was installed in August and acts as another deterrent for speeding offenders. The data produced shows 12,507 vehicles passing by at 31+ miles per hour during a 2-month period.

At the time this goes to publication, a survey had opened between 11th November to 9th December, to extend the yellow lines in areas within Old London Road. A proposal was submitted, by the MPC in November 2020, following the horrendous traffic congestion and parking issues during the first lockdown. We wait for the outcome in the New Year.

Despite several meetings with various agencies including Surrey County Council Highways Department and the police, no real progress has been made in our efforts to curb traffic noise, especially on the A24 and the Old London Road. Acoustic cameras do exist but as yet have not been deployed in this area.

The main issues now are the Mole Valley Local Plan and challenging the proposed ward boundary changes. Our councillors have been working hard to challenge the Local Plan, meeting with various councillors from Mole Valley. The MPC recommended plan was submitted in mid-November, to include provision for more affordable houses for locals either wanting to downsize or for others looking to move into the area. All submissions made will be reviewed by April and a recommendation sent to the Planning Inspectorate. The final decision will be made in late summer 2022, and again we await the outcome.

Once again, the red poppies were mounted on posts along Old London Road, during the period of remembrance – a time to reflect on those that have given so much.


At our last meeting the new lessees of the Running Horses, Manu and Richard from The Little and Large Pub Company, outlined their ambitious plans for the



pub, and thanked everyone within the community for their encouragement and support during the first week of its re-opening.

The Mickleham parish councillors would like to wish you all a very Happy Christmas and a Prosperous New Year.

Rev'd David Ireland, Jane Brown, Graham Clark, Will Dennis, Feena Graham, Kayleigh Hunter, Andrew McNaughton, David Ottridge



BRAIN TEASER

Can you translate this diagram into words?
Say what you see.

MICKLEHAM

Answer on page 26

Norbury Park

Ben Tatham writes:

Surrey County Council has consulted about its vision for how Norbury Park should develop in the future. The consultation closes on 29th November - if you missed that date you can still see what the Council was proposing if you search on line for [norbury-park-vision-consultation/supporting_documents](https://www.surreycc.gov.uk/norbury-park-vision-consultation/supporting_documents). Their final plan taking account of comments received will be published in due course.

Their aim is 'to provide for both nature and enjoyment through a balance of rich natural habitats and facilities to support community use'. Norbury Park was bought in the early 1930s by the County Council to save it from being built on in the days before strict planning restrictions and Green Belt. We in Mickleham and Westhumble are very lucky to have more than two square miles of such a parkland on our doorstep.

The County Council has summarised their proposals as:

- The introduction of two trails with supporting equipment, one active and one sensory, together with improvements to the Young Street Car Park and the introduction of a natural play and picnic area.
- To create a low impact visitor hub at the old Sawmill site to provide toilet

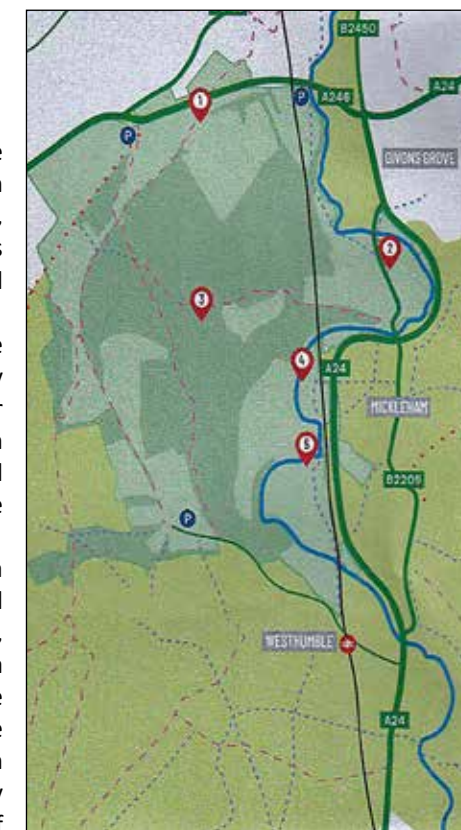
and associated facilities for those utilising the estate for recreation and to accommodate training, community groups and businesses connected to rural crafts and woodland management.

- To carry out an assessment of the natural capital assets across Norbury Park to identify opportunities for enhancement and inform longer term estate scale or localised future land management strategies to maximise the delivery of ecosystem services.
- To make an incremental shift to a regenerative land management and farming strategy at Swanworth Farm, working with the tenant to establish a new way of working aimed at nature recovery, maximising carbon storage and sequestration, improved regulation of water flows, improved water quality and the long term financial viability of the farm enterprise.

We shall have to wait and see what these proposals mean in practice.

Ben has used the text from the County Council's document as much as possible because that is the only source of information.

Attached is a copy of the plan of the park from the SCC document. Details of the roads in Westhumble seem a bit hazy!



- Norbury Park
- Woodland
- Surrey Hills AONB

1. Bocketts Farm
2. Norbury Park Farm and the Bothy
3. Sawmill
4. Swanworth Farm
5. Cowslip Farm

The Boys with the Black Stuff

Photograph: Ben Tatham



The village hall's volunteer maintenance team led by David Kennington mending the pot holes in Dell Close. From left: David Kennington, Tony Butler and Keith Lee

Mickleham & Westhumble Local History Group

AGM followed by

James Chuter Ede

A talk by Stephen Hart

Friday 18th February 2022

7.30 for 8 pm

Mickleham Village Hall

Put the date in your diary

For further information please contact Judith Long

judith.long2@btinternet.com or 07904 160961



Phil's Mowing
DORKING

Regular Lawn Mowing
Lawn Care & turfing
Pressure Washing
Hedge Trimming
General Garden Maintenance

phil@philsmowingdorking.co.uk
07905 160765



HANNAH SCHELLANDER
HYPNOTHERAPY

Struggling with anxiety?

Online sessions available

07846 508117
WWW.HANNAHSCHELLANDER.COM

We provide the best possible care for your feet

Book your appointment:
01372 454583



Bookham
Chiropody & Podiatry Clinic
Diagnosis, Expert Treatment & Professional Care for Your Feet

29 High Street, Great Bookham KT23 4AA
www.bookhamchiropody-podiatry.co.uk

Painting

Decorating / tiling
Wallpapering

- Fully insured
- Free estimates
- References available

Tel: Martin 07770 441201



Vivien Cresswell
Made-to-measure Soft Furnishings

Curtains Roman Blinds Cushions



Extensive range of fabrics

01737 843858
info@cresswellscurtains.co.uk
www.vivienecresswell.co.uk

Mike Palmer
Electrical Services

Part P registered electrician

From additional lighting and sockets to complete rewires

Fully insured Registered with the NICEIC

07866 930483 mike@mikepalmer.biz
Boxhill Way, Strood Green, Betchworth RH3 7HY




KING WILLIAM IV

Dear friends/neighbours,

We are really looking forward to Christmas having been closed last year - Anne is so excited she has ordered four (!) Christmas trees from St Michael's School to bring the magic indoors and outdoors. Our pub carols are on Friday 17th (community) and Sunday 19th (our Abbie and her cousin Ethan from X-Factor). We look forward to seeing you over the festive period and will of course offer our regulars a glass of Christmas cheer.

Happy celebrations, Eamonn & Anne x

PS We will closed for our annual holiday from 4th-20th January, and look forward to welcoming you back on 21st.

Byttom Hill Mickleham 01372 372590 www.thekingwilliamiv.com

Cryptic Delicacies

I did not get many entries to the previous month's competition so I thought I would make things easier with four multi-word anagrams that would give a lot of crossing letters throughout the grid (with anagram indicators being 'ludicrously', 'with fury', 'disorders', and 'in a blender'). The theory was that once you know something is an anagram and you have got the breakdown of a load of short words, then a bit of playing about should get you cracking. Unfortunately the new anagramming website I was trying pulled a fast one and put an extra 'R' in what should have turned into NINETEEN FIFTY FOUR, for which my huge apologies. The road to anagram hell is paved with good intentions. I shall not be using that website again.

The stories that first 'came on the scene' in 1954 were THE LORD OF THE RINGS, LIVE AND LET DIE, and LORD OF THE FLIES (note that I am meaning the books rather than the films). Funnily enough I have just read some interesting thoughts about *Lord of the Flies* in *Humankind - A Hopeful History* by Rutger Bregman in which he talks about the true story of a group of Tongan teenagers who were shipwrecked on a deserted island for 16 months in the 1960s. The outcome was very different from William Golding's novel. I very much recommend *Humankind* or you can google 'the real lord of flies' to find an article that came out at the time of its publication.

Here are some of the clues with definitions underlined:

16 A clip of Patsy Kensit in 'Strictly Come Dancing' leads to protests (3-3) SIT-INS

A reminder that there are always at least a couple of 'hidden word' clues in all of my puzzles, so if you are stuck and needing to get a toehold in your solving just go through all the clues looking for any hidden word pointers. In this case it's 'a clip of' and there within 'KenSIT IN Strictly' is SIT INS.

22 Head off for holidays taking liquid remedy for bugs (10)

EAVESDROPS

'holidays' = (L)EAVES, take the head off to get EAVES, 'liquid remedy' = DROPS, and 'bugs' is as in 'secretively listens in to other people's conversations'.

17 Criminal tailor has a way with ducks? (6)

CONFIT

'Criminal' = CON (short for 'convict'), 'tailor' = FIT (as in to fit a dress), and CONFIT is a way of preparing DUCK (where it is slow cooked in its own fat with salt and herbs).

19 Go before little Edward becomes affected by trapped gas! (8)

LEAVENED

'Go' = LEAVE, 'little Edward' = NED. I realise that 'go' has a lot of synonyms, and 'Edward' can also be shortened to Ed, Ted, Eddie, and the definition is a bit cryptic(!) (leavened bread rises because of the trapped bubbles of gas produced by raising agents such as yeast) but I hoped that the crossing letters giving L_A_E_E_ might give enough of a steer.

14 Tom may be needing oxygen up front, with drip being put in the day before moving (9)

EVOCATIVE

'Tom may be' = CAT (if I see 'Tom' in a



crossword my first thought is always 'Cat'), 'oxygen' = O which when 'up front' gives OCAT, with 'drip' = IV (as in 'intravenous') gives OCATIV, which is all put in 'the day before' = EVE

5 Those lodged in back pocket after deductions by soldiers (7)

TENANTS

'pocket after deductions' = NET (as in 'he was set to net £100,000 after taxes), when 'back' gives you TEN, 'soldiers' = ANTS. A bit tricky but I thought that with crossing letters giving T_N_N_S, you might cycle through possible words and spot one that was a synonym for 'lodgers'.

4 Someone who blinds is wearier without eyes, it's heard (7)

SWEARER

'eyes' when heard can be a number of instances of the letter 'i'. 'IS WEARIER' without the letter 'i' is SWEARER (i.e. 'someone who blinds' - and effs!)

I get the feeling that my puzzles have an aura of impossibility for some people, but like so many things in life you can help yourself by applying basic routines: what is the possible definition I am looking for (usually at the beginning or the end of the clue), what keywords are there to tell me to anagram or add/subtract letters or say the words out loud to hear that they sound like something else or that they are hiding in plain sight within the letters of the clue.

I hope this helps and it would be great to get any feedback via andrewt@andrewtatham.co.uk

Andrew

Defibrillator in Westhumble

When first installed some years ago, the defibrillator at Westhumble was located on the station platform. It has since been replaced by a more up-to-date model and, as you can see from the photo, is now located in a bright yellow box beside the Surrey Hills notice board and the ticket machine in the station car park.

If anyone has the misfortune to need the defibrillator, it can be opened without a key or a code, and the machine provides all the instructions for use.

Courses are available through St John's Ambulance and other organisations; details can be found on the web.



Do you need a plasterer?

Over 25 years' experience working on extensions, renovations, new-build and conversion projects for builders and domestic customers alike.



Our work is to a high standard and we are fast. Give Chris a call for a free, no obligation quotation.

**CHRIS C GUY
PLASTERING LTD**

ALL ASPECTS OF INTERNAL & EXTERNAL PLASTERING
07740 860560 chrisguyplastering@gmail.com

07871 051661 / 01372 458616
timskerittgroundworks.co.uk

TimSkerritt
LANDSCAPE & GROUNDWORKS

Turn your vision into a reality

Tim Skerritt Landscape & Groundworks offers a comprehensive range of services to both commercial and domestic clients across Surrey.

From hard landscaping to extensive site excavations, we offer a high quality, honest, reliable and competitively priced service, guaranteed to meet all your needs. Contact us today to find out more.

Julie Watts Family Law

AN AFFORDABLE AND EXPERIENCED PROFESSIONAL
ALTERNATIVE TO TRADITIONAL SOLICITORS

- Divorce • Arrangements for children • Finances
- Court Proceedings

PROUD TO PROVIDE A DIFFERENT KIND OF SERVICE

- Affordable fees • Straight-talking advice
- Practical real support

Contact me for a consultation

07808 572157 juliewattsfamilylaw.co.uk



Open
Monday to Friday
8 a.m. - 5 p.m.
& Saturday
8 a.m. - 1 p.m.

All leading makes of lawn mowers
& garden tractors catered for

Reasonable rates

Free estimates & friendly service

Paul White Bookham 01372 458008

Domestic Appliance Repairs

30 years' experience repairing and installing
all gas and electric domestic appliances



- Cookers Microwaves
- Dishwashers
- Washing machines
- Fridges / Freezers
- Water coolers
- Coffee machines
- Tumble dryers

Contact: Andy 07895 719706
andy@kirksdomestics.co.uk



PAINTING DECORATING

ANDREW CLARK 07800 796 737

INTERIOR & EXTERIOR • CARPENTRY • HANDYMAN

Dorking Pest Control Services

Local Authority Approved Contractors



Our Services include: Wasps Bee Swarms Hornets Rats Mice
Squirrels Fleas Flies Ants Cockroaches Bed Bugs
Rabbits Moles Foxes and Deer



• Domestic Commercial and Industrial • Contract Work • Preventative Control Programmes

Experts in pest control throughout Surrey

Office: 01306 743001 Ivor: 07710 117491 Chris: 07971 519415

www.dorkingpestcontrol.com

Mickleham Choral Society's Concert for Remembrance Sunday

The Leatherhead Parish Church, newly reordered and decorated, was the delightful venue for the Mickleham Choral Society's annual Remembrance concert. There was an excited buzz before the concert, as performers and friends greeted each other.

A hush grew as the choir assembled on the steps in front of the lower altar. A trumpet sounded the last post (played by 10-year-old Eliza Aarvold) – a poignant reminder of the battlefields of the First World War, before the choir quietly sang the first verse of *Abide with Me*. This established the atmosphere for this concert of songs and readings which kept the audience alive to the fact that we must keep 'Remembrance' going.

One of the readings described in detail how the Tomb of the Unknown Soldier came into being. A fascinating story. The two other readings told of how a soldier of WW2 was probably saved by a Union Jack and of the reason for the saying 'All Quiet on the Western Front'. The choir sang a medley of old and modern compositions in English as well as German and as a collection of



Pre-concert view of the choir in the new setting for their Remembrance Day Concert

Yiddish folksongs sung in the prison camps, which had been arranged by Ian Assersohn. The last set of spirituals was ended with the rousing *When the Saints Go Marching In*.

After enthusiastic applause we were treated to a wonderful 'lollypop' when the choir sang *What a Wonderful World*. A fitting reminder of life today and how we must live that life to the full.

The singing, under the conducting of Juliet Hornby was expressive and meaningful. Judith Flint used her skill as an accompanist to the full throughout the programme.

I am sure that everyone is looking forward now to the choral society's Christmas Carol Party on 10th December in Mickleham Village Hall.

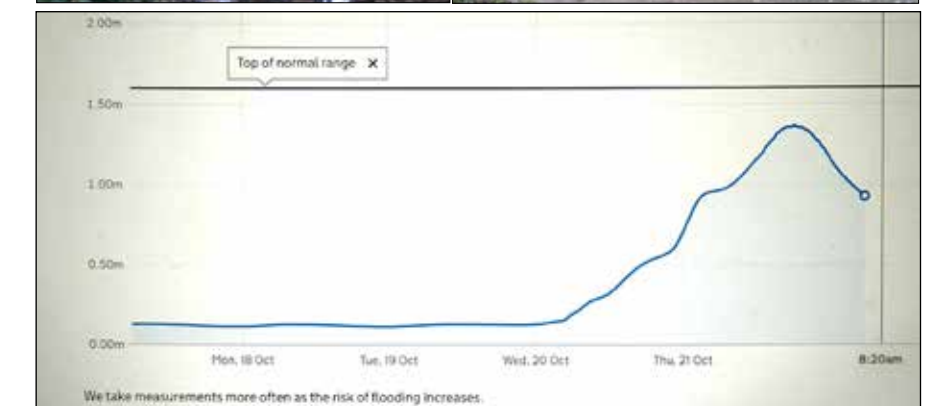
Beverley Mehta

Unnoticed flooding on 21st October

On Thursday 21st October the River Mole rose rapidly after almost a month's rain (about 50mm) fell the previous night. Few people seemed to notice the flooding except those who live near the river and those who went out walking.

The Burford Meadow near the footbridge downstream of the Stepping Stones was flooded and the water was up to the deck of the footbridge. Even the subway under the A24 was flooded – see photographs. The river gauge at Castle Mill (right) showed that the river rose and fell rapidly so that if you were not nearby at the right time you would have missed it. Walkers in Norbury Park saw the so-called oxbow lakes almost overflowing.

Ben Tatham



We wish all our readers a very Merry Christmas

10 Year
Manufactures
warranty available
with any new boiler
Oil, LPG and Gas Registered

**SE Plumbing
& Heating**

Call for a free quote on
01306 735499
www.seplumbingandheating.co.uk

Checkatrade.com
Where reputation matters

Get IT Fixed, Get IT Connected

Expert Repair & Maintenance



Brockham based. No call out charges. Fully transparent quotations with no hidden costs. We make technology work for you.

Call us now on **01737 845980** ChalkHill Systems
www.chalkhillsystems.co.uk

R A BUTLER
INTERIOR AND EXTERIOR
PAINTING & DECORATING
OVER 30 YEARS' EXPERIENCE

**BUILDING
REPAIRS
UNDERTAKEN**
PATIOS DECKING ETC NO JOB TOO SMALL

LOCAL REFERENCES IF NEEDED
01372 372586 / 07776 256131

TONY WINCH
**CARPENTER, JOINER
& CABINET MAKER**
www.tonywinch.com
01306 742373
07969 016 924

Building Plans
For home improvements & extensions
Including planning & building regulations
Fast efficient service at competitive rates
MICHAEL LLOYD CEng MICE
For free consultation:
Phone: 01483 205479 or 07958 791 402

RWP
Extensions and alterations often require a
Structural Engineer
Robert Wynter & Partners Ltd
01306 879875
Book House Vincent Lane
Dorking RH4 3HW

remedial roofing
For people with roof issues and deficiencies

- New roofs – slate & tiled roof specialists
- All roof repairs, moss removal & gutter clearance
- Flat roofs, traditional felt & GRP fibreglass
- New uPVC Fascia, soffit & guttering

Obtain an up-to-date report of remedial roofing on www.checkatrade.com

ALL WORK GUARANTEED
Call us today for a FREE quotation on:
01306 304736 | 07852 833802
info@remedialroofing.co.uk www.remedialroofing.co.uk

Seasonal Inspirations

Children have really been enjoying using paint in different ways. Initially inspired by the movement and sound of conkers rolling on a large drum, we sought to create firework type pictures by rolling the conkers in metallic paints and then using dustbin lids as our musical drum. We could then 'see' the sound the conkers made, and noted the difference between the plastic and metal bin lids.

If you have never tried 'salad spinner' painting and you have a redundant salad spinner, well drag it out from the back of the cupboard. So exciting, super engaging and easy peasy creations. Older children may like to learn about the science of applying forces, for our younger children it is a wow moment when you lift the lid to reveal the pattern and the mixture of colours.

In last month's magazine we reported that we had two artists visiting the nursery. One is a musician and a couple of sessions ago she brought in a selection of child-sized violins. What an amazing opportunity for our children to be able to explore how to create the differing sounds, and indeed for our neighbours who I am sure delighted in our musical creations.

Children have been learning about Remembrance. At Nursery we teach a very simplistic but effective message, 'We are remembering the soldiers who help to keep us safe'. I am always impressed by how they too can (almost) keep silent for two minutes.

We are now very much looking forward to Christmas. I do hope you are able to attend our Christmas Fair on Saturday 4th December 11 am– 2 pm. It will be so nice to see our community friends again after missing last year's event. We are also practising our Nativity play. This year will see the return of 'Humph, the grumpy Camel'.

Hilary Budd



St Michael's Community Nursery

Free Entry

Christmas Fair
Saturday 4th December

Independent stalls, Santas Grotto, Children's activities, Food, Mulled Wine and much more!

Mickleham Village Hall
11am - 2pm



Mickleham Village Hall Dell Close

Weekdays 9.15 am - 12.15 pm (term time)

WITH OPTIONAL LUNCH CLUB

On Mondays and Thursdays there is the option for children to stay until 2.45 p.m.

Maximum 26 children per session

• playing naturally • learning naturally

We offer an excellent range of pre-school activities for 2½ to 5 year-olds where they can learn through play in an informal friendly atmosphere.

Contact us for more information about admissions

01372 361021 www.stmichaelscommunitynursery.co.uk

Solution to the November crossword

Across: 1 Stylus 9/15 Nineteen fifty four 12 Late 13 Performs 16 Sit-ins 17 Confit 19 Leavened 21 Waxy 22 Eavesdrops 25 Kimono 26 Amnesiac 27 Degraded 28/5 Lord of the Flies

Down: 2 Thief 3 Leech 4 Swearer 5 Tenants 6 Enlists 7 Little toe 8 Existence 14 Evocative 18/11 The Lord of the Rings 19/10 Live and Let Die 20 Arsenal 23 Riser 24 Plato

BRAIN TEASER answer: Maiden Over



All Saints Coffee Shop

Closing in mid-December
see page 11



01306 885533

Enquiries@dorkingtaxis.co.uk

www.dorkingtaxis.co.uk

For immediate service please telephone. Future journeys (48 hours ahead) may be booked by email.

- 4/6/8 seaters • Home to school transport
 - Transport to airports/ferry ports/Eurostar
 - Courier services • Long distance journeys
- All drivers & vehicles are fully vetted by MVDC & SCC / Female drivers available on request
All major card payments accepted



Ex-Crew Members Get-Together

Thursday 23rd December 7 pm

Campfire with marshmallows (weather permitting). For more information contact

Jonathan Blake 07787126966



Joseph

De Decorators

- Painting • Decorating • Wallpapering • Plastering • Tiling
- Mickleham based 40 years' experience
01372 372331 07973 358 932

NEED A CARER?

Highly qualified professional carer
Hours to suit References available
Call Cheryl 07810 881267

Lunchtime club – Place of Peace

We have a lunch time club at St Michael's for children who would like or need a quieter play. They take part in a range of activities such as puzzles, colouring, games and reading. Some children like to just draw and chat. Mrs Travers who sometimes runs the club has begun to think of additional fun activities that the children could do. She came up with the idea of pasta lions' manes a few weeks ago. The children thoroughly enjoyed it. Take a look at the results!

As we have renamed our classes, we could no longer use the name 'Butterfly' for the lunchtime club as this is now one of our class names. We all started thinking about what would be a good name and we finally settled on Mrs Stewart's idea of POP club (Place of Peace). Great idea Mrs Stewart!

Remembrance

This month we learnt about the significance and importance of Remembrance. We held a special worship where the children brought handmade poppies into the hall and laid them on the stage. They did this with reverence and we were incredibly proud of how respectful they were. We took part in a two-minute silence at 11 o'clock and you could have heard a pin drop. Well done St Michael's School. In class the children wrote Remembrance poems and chose to draw many poppy pictures in their own free time.

Christmas fever

Christmas is fast approaching and at St Michael's we try to make it a magical and exciting time for the children, staff

and parents. The Year 2s step up by taking on the lead roles and the younger children in our school join in with the dancing and singing, looking so sweet in their various costumes.

This year, we welcome our parents into school again and we all feel so lucky to be able to enjoy this event all together as a school community.

The staff have spent a great deal of time carefully choosing a play and Mrs Moore, Miss Chapman and Mrs Guegan have been busy adapting the script to make sure it fits perfectly with our Christian ethos.

Mrs Leney carefully designs the stunning backdrops and spends time auditioning the children for speaking parts. The children love the feel of Christmas and the play is a highlight of the end of term fun.

On this same week, the children will be invited to an evening story telling session which is kindly organised and run by the Friends of St Michael's. The children come to school in their cosy pyjamas and enjoy an hour of crafts and various stories, including the Christmas story.

Each year at school we have an Advent charity. At St Michael's we believe in giving back to the community and each year we choose a charity to support. This year we have decided to support Ilakiya, a school girl in India.

Alongside the Advent charity we are proud to also support the 'Shoebox Appeal'. The idea is to fill a shoebox with items suitable for a particular aged child. Toys, hygiene items, colouring pencils etc are all examples of things



St Michael's School

stmichaels-dorking.surrey.sch.uk/

that could be included. By supporting different charities, the children see our values played out by themselves and feel a sense of pride at the idea of service towards others.

Nicola Cleather



Pasta lion's mane pictures

St Michael's C of E (A) Infant School Statutory requirement to consult on Admissions Arrangements

Statutory guidance on school admissions is contained in the School Admissions Code 2014. There is a statutory requirement for all schools to consult on their admissions arrangements at least once every seven years, even if there have been no changes during that period and no changes are proposed. The consultation period is required by law to run during a specified timeframe for a period of at least six weeks and to have concluded by 31st January 2022.

Our consultation period began on 3rd November 2021 and will end on 15th December 2021.

Information on the proposed arrangements can be found on the school website: www.stmichaels-dorking.surrey.sch.uk

If you would like to respond to this consultation, please email: info@stmichaels-dorking.surrey.sch.uk



Christmas Tree Sale

If you enjoy a 'real' tree at Christmas, please consider ordering yours from the Friends of St Michael's and help raise some money for the school. After a bumper 2020 we hope that it is equally popular again this year.

We will again be offering very high-quality non-drop Nordman fir trees for collection from the school on Sunday 5th December. Trees are available from 3ft with prices starting at just £30.

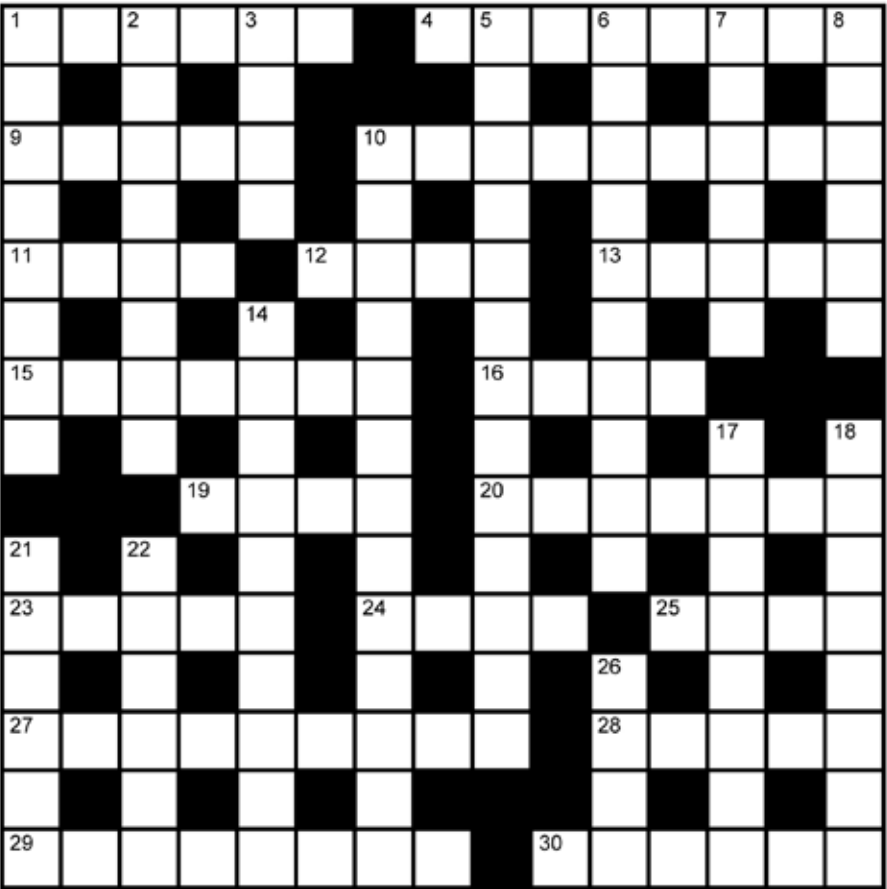
To register your interest or for more information, please contact us at friendsofstmichaels2017@gmail.com

Cryptic Crossword



Across

- 1 Hurray for the old eating smoked fish without clothes on! (6)
- 4 Eric begs to hop around with some unwelcome sailing companions (8)
- 9 Curled over and finally went spare with stomach problem (5)
- 10 See 20
- 11 International award given for 'The Sound of Chronic Tiredness' (4)
- 12 Vegan fare leads to toilet overflow fouling up (4)
- 13 See 30
- 15 Russian leader faces exposure for liking boys and beating (7)
- 16 Pantomime dame hides a savoury item in red wrapping (4)
- 19 Regularly throw out forgeries for monstrous villain (4)
- 20/1D/10A Sexist seasonal exhortation from gruesome yet trendy mongrel doing a strange dance (3,4,3,5,9)
- 23 Part of the fun of advent calendars is the final one revealing someone who hates parties (5)
- 24 This is Santa's first refusal to join George for an over-the- top display under the mistletoe (4)
- 25 Casino Royale gives an instance of this short document being given to Bond's boss (4)
- 27 See 28
- 28/27 Well-known single wretch aims this in revolt (5,9)
- 29 Perform carols around Prince Charles to receive bombardment with water (8)
- 30/13 Len begs Jill to perform something in the open with one horse (6,5)



Down

- 1 See 20 Across
- 2 Instruction for a lift is what's welcome when you're down at the bottom (4-2-2)
- 3 Eric's little partner goes around entrance to auditorium to be paid (4)
- 5 Scrooge mounds up all sorts of things bought to show the true spirit of Christmas (8,5)
- 6 Notice displays in public when one is removed from game for offensive personal smell (10)
- 7 Catch on to a sign that you're ready for Christmas lunch (6)
- 8 It's most sensible to have a place to keep machine guns in the Johannesburg area (6)
- 10 Founder of Kodak agrees montage is a shambles (6,7)
- 14 Singer of song by crib goes berserk (4,6)
- 17 Longing for the sound of the bell is English master's refuge (8)
- 18 Give order to sedate PM with out-of-control career (8)
- 21 Daughter of locksmith keeps a large number of sheep (6)
- 22 In fact neither Charles nor Erasmus Darwin is a source of nocturnal emissions (6)
- 26 Two women's institutes formed up for a short war (4)

Andrew Tatham

The solution to last month's crossword is on page 26.

More autumn colour at Leonardslee



Need help with your accounts?

Running a business needs time and energy – don't waste your time working on your accounts when you can work on your business instead!

At a4c we provide fixed fee accountancy solutions with friendly support throughout the year. Services include accounts, tax returns, VAT, payroll, book-keeping etc.

Friendly, approachable and local to Dorking – we enjoy getting to know our clients so call us today for a no obligation chat.

We LOVE numbers so YOU don't have to!

01737 652852

esther@a4cgroup.co.uk

www.a4cgroup.co.uk



**RANMORE
RENOVATIONS**

LOCAL BUILDER

New bathroom installations,
re-design, renovations,
plumbing/heating,
electrics, plastering & tiling,
decorating, Karndean flooring,
all building works.
All works guaranteed
fully Insured
35 years' experience

Please contact Damian
07940 599845 / 01306 880332
musgrovebuild@gmail.com



Learners Today, Leaders Tomorrow



At Box Hill School, we understand all students are individuals and approach learning in different ways. Our holistic approach to education develops our children's intellectual, social, physical and artistic talents. It encourages them to explore a path of self discovery thus stimulating the unique abilities within each child to achieve success.

INSPIRATIONAL
Box Hill School
DAY, WEEKLY & FULL BOARDING
Box Hill School | London Road | Mickleham | Dorking | +44 (0)1752 373382 | admissions@boxhillschool.com
boxhillschool.com

MEABY&Co solicitors

Strength & wisdom in law & business since 1848

Meaby & Co Solicitors sits proudly in the heart of Dorking High Street providing expert legal advice to individuals and businesses throughout the town and its surrounding area. With additional offices throughout London, our experienced team, our 5* Google reviews and award winning service will ensure that all of your legal needs are supported on your doorstep.

Specialising in:

Residential & Commercial Property	Fraud & Private Crime	Reputation Protection
Wills, Trusts & Probate	LGBT Experts	Commercial & Corporate Law
Litigation and Mediation	Employment Law	Media & Entertainment
Crisis Management	Family & Divorce Law	Lease Extensions

Drop by our offices at 159 High Street, Dorking RH4 1AD or contact our switchboard on 01306 884432. Need advice elsewhere? We can assist. We have branch offices in Camberwell, Soho & Chigwell.

Switchboard: 01306 884432 www.meaby.co.uk @MeabyandCo meaby-&-co MeabyandCo meabyandco

John Wadsworth



CALL NOW FOR YOUR FREE VALUATION
01372 450500

www.johnwadsworth.co.uk sales@johnwadsworth.co.uk
A professional efficient and friendly service



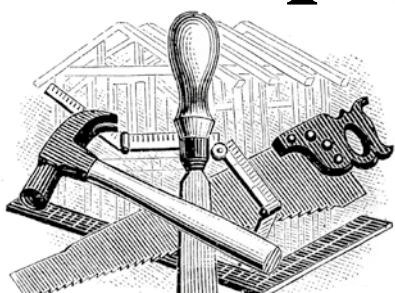

**RESIDENTIAL • COMMERCIAL
AGRICULTURAL • SCHOOLS • ACOUSTIC
HOARDING • GATES • SECURITY**

RICHARDSON & BRADS FENCING LTD
T: 01306 640 143 - 01483 414 745
 E: INFO@RBFENCINGLTD.CO.UK
 W: WWW.RBFENCINGLTD.CO.UK
 A: 168 SOUTH STREET, DORKING, SURREY, RH4 2ES
 UNIT 45 MARTLANDS INDUSTRIAL ESTATE, SMARTS HEATH LANE, MAYFORD, GU22 0RQ

J S Wilson

Mickleham

Carpentry & Building Services



Extensions ~ Conversions
 Refurbishments ~ Property Maintenance
 Fully guaranteed ~ Fully insured

One call WILL solve it all

Contact Jason on: 07761 926684 or 01372 379359
jswilsonconstruction@gmail.com



Bespoke, quality kitchens designed & supplied by Jan Callicott of Westhumble.
 Contemporary or traditional cabinetry with a friendly, pragmatic project management style.



www.eatonsquareinteriors.co.uk
enquiries@eatonsquareinteriors.co.uk
 07873 216111

BLANCO Quooker®
 caesarstone®

Eaton Square Interiors
 Meetings by appointment